



## OPTO-EDU A59.3508 8.0M WIFI HD Digital Microscope Camera

Our Product Introduction

for more products please visit us on [cnoec.com](http://cnoec.com)

### Basic Information

- Place of Origin: China
- Brand Name: CNOEC, OPTO-EDU
- Certification: CE, Rohs
- Model Number: A59.3508
- Minimum Order Quantity: 1 pc
- Price: FOB \$1~1000, Depend on Order Quantity
- Packaging Details: Carton Packing, For Export Transportation
- Delivery Time: 5~20 Days
- Payment Terms: T/T, West Union, Paypal
- Supply Ability: 5000 pcs/ Month



### Product Specification

- Sensor: Sony IMX334, 1/1.8" CMOS
- Pixel Size: 2.0μm\*2.0μm
- Resolution: 8.0M
- FPS: Photo 1920\*1080@60FPS, Video 1920\*1080@30FPS
- Exposure: Exposure Time 0-33MS, Auto/Manual Adjust, Support Target Brightness Setup
- White Balance: Auto/Manual
- Highlight: **usb digital microscope,**  
**infinity plan microscope**



### More Images



## Product Description

WIFI+ HDMI + Type C UVC + WAN Image Output Picture & Video  
8.0M Full HD Resolution 1920\*1080@60FPS For HDMI & USB Output  
UVC Real Time Image Output To PC With S-Eye Measure Software  
USB2.0 Mouse Control Menu On HDMI Interface Menu With Measure Function  
Type C DC5V/2A Power Supply By Adapter or Power Bank



OPTO-EDU (BEIJING) CO., LTD.

OPTO-EDU

F-1501 Wanda Plaza, No.18 Shijingshan Road, Beijing 100043, China  
Tel: +8610 88696020 Fax: +8610 88696085

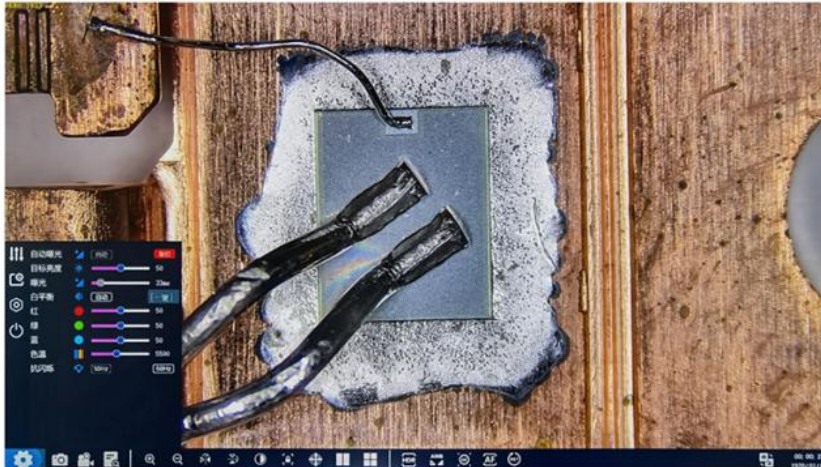
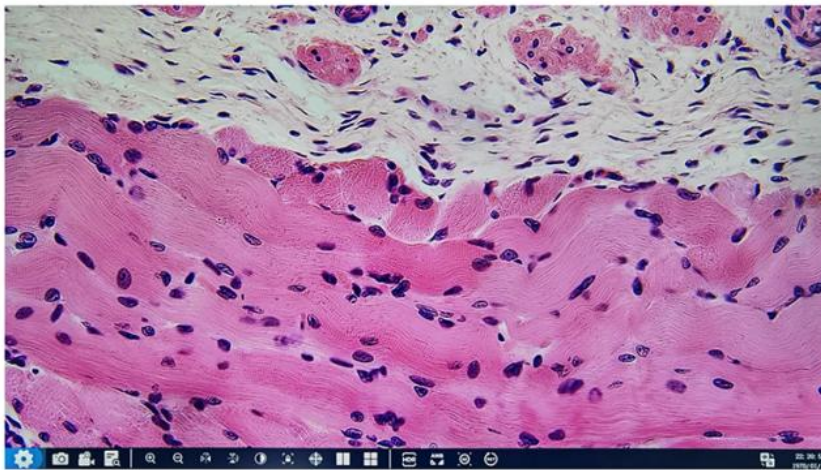
## A59.3508

WIFI+HDMI+Type-C+WAN, Digital Camera,  
8.0M, Mouse Control Measuring  
Digital Camera, 8.0M

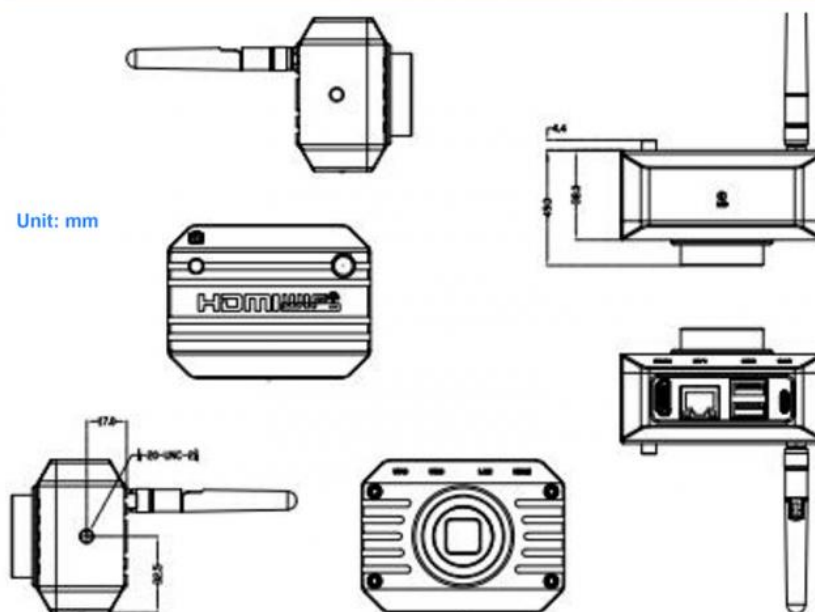


### A59.3508 Software





## Product Specification



Items	A59.3508 WIFI+HDMI+Type-C+WAN, Digital Camera, 8.0M
Sensor	Sony IMX334, 1/1.8" CMOS
Pixel size	2.0μm*2.0μm
Resolution	8.0M
FPS	Photo 1920*1080@60FPS, Video 1920*1080@30FPS
Exposure	Exposure Time 0-33MS, Auto/Manual Adjust, Support Target Brightness Setup
White Balance	Auto/Manual
Parameter	Set Contrast, Saturation, Gamma, Sharpness, Noise Reduction, Etc
Output	WIFI+HDMI+Type-C+WAN
WIFI	WIFI Output Youngwin OS, Support Lo

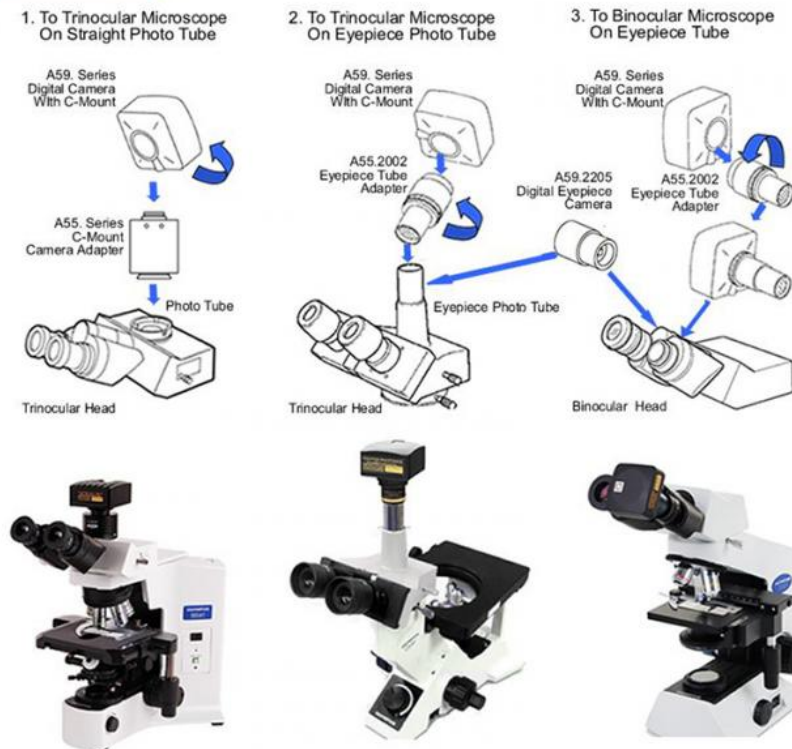
HDMI	Full HD 1080p@60FPS HDMI Output To Monitor, Control By USB2.0 Mouse: Move Mouse To Left & Bottom Edge Of HDMI Screen To Call Up The HDMI MAIN MENU & QUICK MENU, To Capture Photo, Video, Measure, Setting.
USB	1xUSB Connect To Mouse, 1xUSB Connect To U Disk To Store Photo & Video
Type-C	Output From Type C Port To PC USB Port, S-Eye Measure Softwer For Win10  S-EYE Measure Software: Length: Straight Line Length, Broken Line Length, Curve Length, Parallel Line Distance, Point Line Distance, Line Length Geometry: Radius Circle, Two-point Circle, Three-point Circle, Concentric Circle, Radius Circle, Two-point Circle, Three-point Circle Geometric Area:Polygon, Square Remark: Point Coordinates, Crosshairs, Coordinate Systems, Text Notes
WAN	Output To Ethernet
Language	Support Chinese,English,Deutsch, France, Janpanese
Power	Type C DC 12V/2A
Package	Size 85*65*49mm Weight 0.2Kg



## Camera Connect To Microscope

### OPTO-EDU

### How Camera Connect To Microscope



Opto-Edu (Beijing) Co., Ltd.

☎ 0086 13911110627

✉ sale@optoedu.com

🌐 cnoec.com

F-1501 Wanda Plaza, No. 18 Shijingshan Road, Beijing 100043, China

