



OPTO-EDU Stereo Microscope with Large Zoom Lens 0.6x-5.5x, Zoom Ratio 1:9.1, and 125 mm Working Distance for Life Sciences & Industrial Inspection

Our Product Introduction

Basic Information

- Place of Origin: China
- Brand Name: CNOEC, OPTO-EDU
- Certification: CE, Rohs
- Model Number: A23.1017A23.1019
- Minimum Order Quantity: 1 pc
- Price: FOB \$1~1000, Depend on Order Quantity
- Packaging Details: Carton Packing, For Export Transportation
- Delivery Time: 5~20 Days
- Payment Terms: T/T, West Union, Paypal
- Supply Ability: 5000 pcs/ Month



Product Specification

- Highlight: Large Zoom Lens 0.6x-5.5x Stereo Microscope, Zoom Ratio 1:9.1 Stereo Optical Microscope, 125 mm Working Distance Stereo Zoom Microscope



More Images



Product Description

OPTO-EDU A23.1017/A23.1019 Stereo Microscopes

Key Features

- Infinity-Corrected Apochromatic Optical System
- Large Zoom Lens 0.6x-5.5x, Zoom Ratio 1:9.1
- Oblique Light & Transmit LED Illumination
- Complete Accessories Include Polarizing, Dark Field
- Standard Plan APO Lens



A23.1017

Stereo Microscope, 0.67~5x, 1:7.5

A23.1019

Stereo Microscope, 0.6~5.5x, 1:9.1



A23.1017/A23.1019 Features



The A23.1017/A23.1019 series stereo microscopes feature a groundbreaking apochromatic optical system, delivering superior performance in resolution, depth of field, contrast, and color fidelity. With a 125mm working distance, these microscopes provide a safe and spacious operating environment for both live specimen manipulation and industrial inspection.

Exceptional Imaging Quality



A23.1017
Stereo Microscope, 0.67~5x, 1:7.5



A23.1019
Stereo Microscope, 0.6~5.5x, 1:9.1

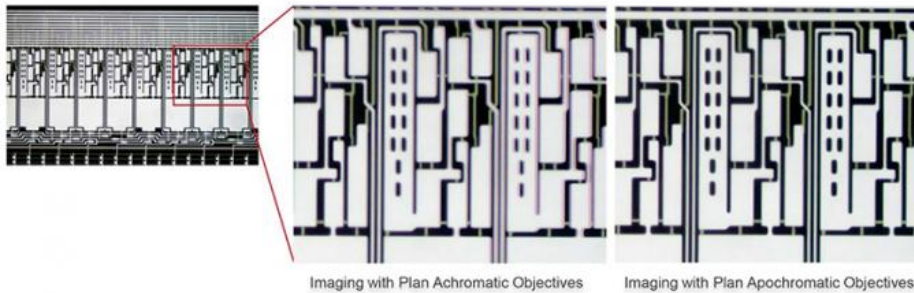
A23.1017/A23.1019 Details



Equipped with an apochromatic optical system, the A23.1017/A23.1019 series achieves perfect fusion of high contrast, resolution, and color fidelity, delivering imaging quality that surpasses previous standards.

Ergonomic Design

With a 125mm working distance, the A23.1017/A23.1019 provides ample space for comfortable operation, eliminating the constraints of traditional setups. Users can maintain comfortable posture for extended observation sessions.



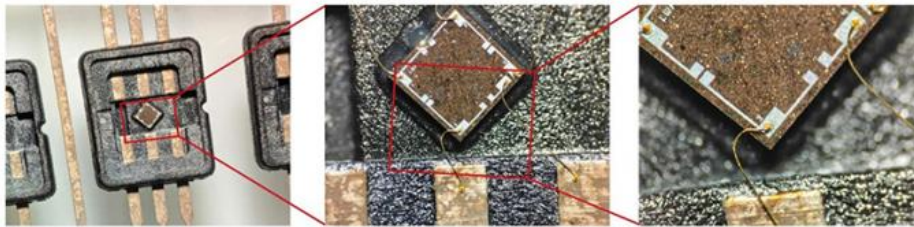
Imaging with Plan Achromatic Objectives

Imaging with Plan Apochromatic Objectives



Versatile Magnification Range

Featuring an impressive 1:9.1 zoom ratio, the A23.1017/A23.1019 offers continuous magnification from 6X to 55X (with 10X eyepieces), enabling effortless switching between wide-field imaging and high-magnification observation.

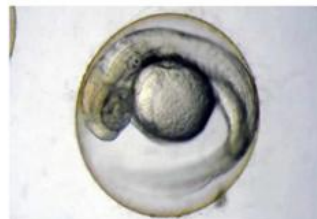


Multiple Observation Methods

Supports brightfield, darkfield, polarization, and high-contrast imaging, with both binocular and trinocular models available to meet diverse user needs.

Transmitted / Reflected Brightfield

The A23.1017/A23.1019 series delivers an optimal balance between high resolution and large depth of field in bright field observation. Whether examining plant cell morphology or insect surface textures in life sciences or inspecting solder joints and assembly gaps on PCB boards in industrial applications, the system provides delicate true-to-life imaging with accurate color reproduction and crisp, well-defined edges.



High-Contrast Imaging

Enhances the light and dark differences and boundary features of sample structures, delivering clear, layered, three-dimensional visual effects even when observing low-contrast or transparent specimens,

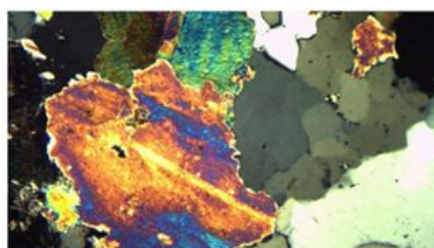
Darkfield

Professional-grade darkfield illumination components can be configured to precisely control the angle and intensity of light, ensuring optimal illumination of the sample. In industrial quality control, this allows for the sensitive detection of surface scratches, cracks, and microscopic short circuits on PCB boards.



Polarization

High-precision polarizing components are available to enable accurate control of polarization angles. Whether analyzing mineral crystals in geology, inspecting internal stress distribution in plastics for the polymer industry, or observing birefringence in biological samples such as starch grains or bone tissue, the A23.1017/A23.1019 delivers clear, detailed, and richly colored microscopic images



A23.1017/A23.1019 Complete Set of Accessories

OPTO-EDU

Comprehensive Accessory System

Equipped with professional accessories for functional upgrades, catering to needs across basic observation, advanced research, industrial inspection, and education.

Eyepieces

Multiple types of eyepieces are available. The standard configuration includes a 10X/23 widefield eyepiece, providing an ultra-large field of view. Additionally, 15X, 20X, and 30X high-magnification eyepieces are optional, allowing for higher magnification observation at a low cost.



Ring Light

Professional high-performance ring light supporting standard reflected illumination, with four-zone brightness adjustment to meet the observation needs of special samples.



Platform

Professional stereo platform enabling high-precision sample control.



Stand

Supports various types of stands, including standard, ultra-thin, and multifunctional models. The ultra-thin stand, featuring a slim base and high color fidelity illumination, is perfectly suited for the new A23.1017/A23.1019 series stereo microscopes.



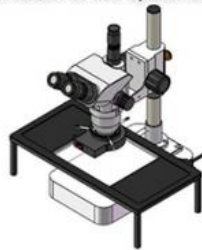
Fiber Optic Illuminator

Flexible dual-arm or single-arm fiber optic illuminators can be adjusted according to observation needs, allowing changes in illumination direction and angle to achieve optimal imaging contrast and effect.



Heating Stage

Professional stereo heating stage with a large glass surface supporting oversized sample observation. It offers temperature control from room temperature to 50°C, suitable for long-term observation of live specimens.



A23.1017/A23.1019 Applicable Scenarios

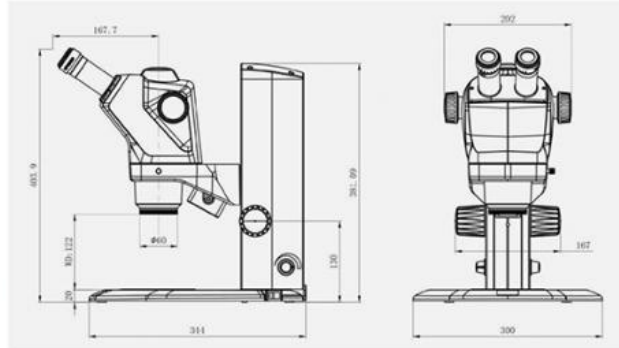
OPTO-EDU

Applications

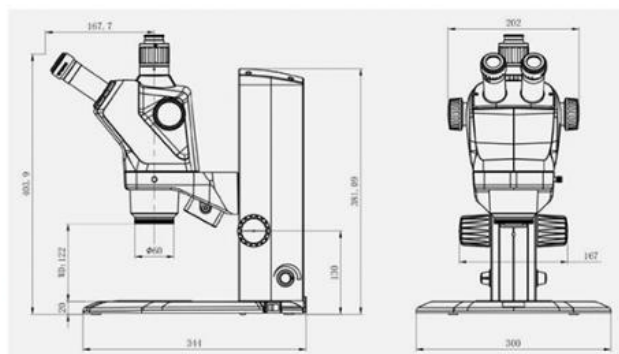
Ideal for life sciences, precision manufacturing, quality control, artifact authentication, and restoration, supporting applications from animal dissection to electronic inspection and cultural relic restoration.



► A23.1017-B/A23.1019-B Dimension (Unit: mm)



► A23.1017-T/A23.1019-T Dimension (Unit: mm)



A23.1017/A23.1019 Specification

OPTO-EDU



Technical Specifications

Model	A23.1017-B	A23.1017-T
Optical System	Infinity-Corrected APOchromatic Optical System	
Magnification	6.7x~50x	
Zoom Range	0.67x~5x	
Zoom Ratio	1:7.5	
Head	Binocular	Trinocular

Interpupillary Distance	50-76mm
Eyepiece	WF10x/23mm, Diopter Adjustable, High Eyepoint, WF15x, WF20x, WF30x (Optional)
Working Distance	125mm
Illumination	Upper LED 2.4W, Bottom LED 5W
Function	Brightfield, Simple Polarization, Darkfield, Oblique Illumination



Model	A23.1019-B	A23.1019-T
Optical System	Infinity-Corrected APOchromatic Optical System	
Magnification	6x~55x	
Zoom Range	0.6x~5.5x	
Zoom Ratio	1:9.1	
Eyepiece	WF10x/23mm, Diopter Adjustable, High Eyepoint, WF15x, WF20x, WF30x (Optional)	
Head	Binocular	Trinocular
Interpupillary Distance	50-76mm	
Working Distance	125mm	
Illumination	Upper LED 2.4W, Bottom LED 5W	
Function	Brightfield, Simple Polarization, Darkfield, Oblique Illumination	



A23.1019-B



A23.1019-T + Microscope Camera



A23.1017-T + LCD Camera



A23.1019-T + LCD Camera



Opto-Edu (Beijing) Co., Ltd.

☎ 0086 13911110627

✉ sale@optoedu.com

🌐 cnoec.com

F-1501 Wanda Plaza, No. 18 Shijingshan Road, Beijing 100043, China