



Opto Edu A16.2255 Laboratory Fluorescent Microscope Fully Motorized UV B G BX53 CX43 Level

Our Product Introduction

for more products please visit us on cnoec.com

Basic Information

- Place of Origin: China
- Brand Name: OPTO-EDU
- Certification: CE, Rohs
- Model Number: A16.2255
- Minimum Order Quantity: 1 pc
- Price: FOB \$1~1000, Depend on Order Quantity
- Packaging Details: Carton Packing, For Export Transportation
- Delivery Time: 5~20 Days
- Payment Terms: T/T, West Union, Paypal
- Supply Ability: 5000 pcs/ Month



Product Specification

- Optical System: ECGO Infinity Plan Mutual Achromatic Optical System, Confocal: 45mm
- Head & Video Adapter: Trinocular Head, Light Split (0/100, 50/50, 100/0), Ultra Wide FN=26.5
- Eyepiece: Ultra Wide Field 10x/23mm, Diopter Adjustable -2~+8°, With Eyecup
- Nosepiece: 6 Holes Motorized Nosepiece, M20.32 Screw (RMS)
- Objective: UPLFLN Infinity Plan Semi-APO FL Objective, Cover Glass- 0.17
- Condenser: Abbe Condenser, N.A=1.1, 4x~100x



More Images



Product Description

Full Motorized XYZRLCC, Infinity Achromatic Plan Optical System, Confocal 45mm

Infinity Plan Achromatic Objective, 4X, 10X, 20X, 40X, 100X

10W Wide Color Gamut LED Light, Color Temperature 4500K, Sunlight Simulated, Brightness Equivalent to 100W Halogen Lamp

6 Holes Coded Motorized Nosepiece, Support ECO, Brightness Memories

XYZ Motorized Stage, Moving 118x76mm, 4 Slides Holder, Joystick Controller



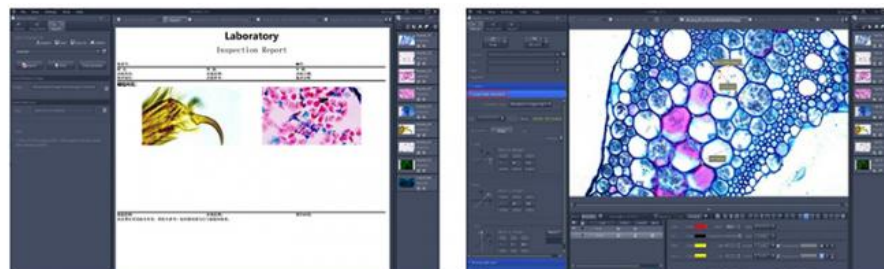






Opten Professional Microscope Analysis Software, Support Function:

- Motorized XYZ Stage Control From Software
- Motorized Fluorescent Band Switch From Software
- Motorized Nosepiece Control Switch Objective Lens From Software
- Calibration Auto Switch For Each Objective
- Camera Parameter Auto Switch For Each Objective
- Photo, Video Capture, Calibration & Measure, Parameter Adjustment etc.





High-Precision Electric Platform

The electric platform (stepper motor) adopts the same connection and installation method as the ordinary manual stage. With only one bolt, the manual stage can be upgraded and replaced with an electric XY stage. The long X-axis travel can load 1-4 standard slides at same time. It comes with integrated control software, which can centrally operate and control all electronic components of the microscope.

Encoded Electric Z-axis Accessories

The encoded electric Z-axis accessories are composed of a dual-axis stepper motor and a multi-turn encoder, with a minimum step size of 0.8 degrees (360 degrees with 200 subdivisions). The encoder can provide real-time feedback of Z-axis coordinate data. The installation is simple and does not require any damage to the body structure. Only 2 screws are needed to complete the installation, and the structure is firm.



Multifunctional computer drive

It can achieve driving control of components such as the electric objective turntable (R), electric stage (XY), electric Z-axis (Z), camera external trigger, etc. It can communicate with the computer through RS232 and USB ports to achieve software control and programmed action processing.

Electric microscope joystick controller

Equipped with full control over the electric loading platform (XY), electric Z-axis (Z), and electric objective turntable (R), with high, medium, and low speed three speed switches. Change to precise control of XYZ, support up to 6 objective lenses for arbitrary switching, and need to be used in conjunction with M-DRV 200 multifunctional computer driver.





► Motorized Condenser

Abbe Condenser, N.A=1.1, 4x~100x

► Light Intensity Management (LIM)

SUPERMLED 10W LED Light House, Lifetime 60000 Hours, Wide Color Gamut 4500K Color Temperature, Kohler Illumination

► Button Control Magnification Switching

By touching the button on the body, the magnification of the objective can be switched easily, avoiding pollution, wear, and looseness caused by long-term contact with the objective lens.



► Metallurgical Illuminator

EPI Reflect Illumination, with BF & DF Module, With Polarizing Slot

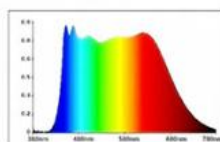
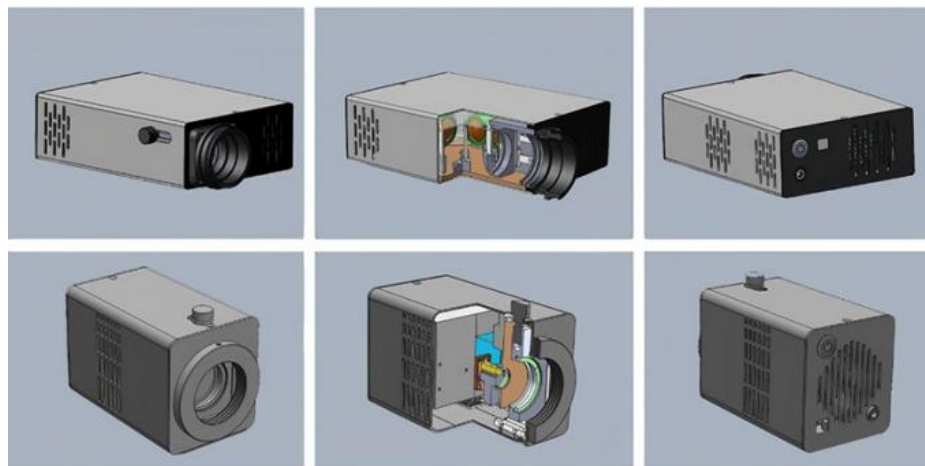
► Fluorescent Illuminator

Turret Epi-Fluorescent Illumination, 4 Holes, Build-In UV, Blue, Green Excitation Module, With Polarizing Slot



► Illumination System

Lumi Cite Ultra-High Brightness, SUPERMLED High-Power And Wide Color Gamut LED Light, 60,000 Hours, 4500K Color Temperature, Sunlight Simulated



High Power and Wide Spectral
White LED Light Source



Ultra High Power and Wide Spectral
White LED Light Source

A12.2255, A13.2255, A16.2255 Features

OPTO-EDU



Full Motorized .2255 Series Laboratory Research Microscope

- Full Motorized XYZRLCC, Infinity Achromatic Plan Optical System, Confocal 45mm
- UPLN or PLCN Infinity Plan Achromatic Objective, 4X, 10X, 20X, 40X, 100X
- 10W Wide Color Gamut LED Light, Color Temperature 4500K, Sunlight Simulated, Brightness =100W Halogen Lamp
- 5/6 Holes Coded Motorized Nosepiece, Support ECO, Brightness Memories
- XYZ Motorized Stage, Moving 118x76mm, 4 Slides Holder, Joystick Controller

Excellent Optical Properties

The new ECGO infinite bidirectional chromatic aberration calibration system objective lens with a new optical architecture has three zoom distance designs of 45mm, 60mm, and 95mm, which can balance high resolution and long working distance, as well as special biology-specific 40x and 100x coverslip-free objective lenses, making it easier for users to capture microscopic structures of bacteria and chromosomes more clearly during coverslip-free sample detection.

Maintenance-free long-life light source

Transmission lighting uses SUPERMLEDIM large-scale LED light-emitting array packaged with multi-core stack technology, simulating solar light sources. The emission spectrum is uniform and continuous in the visible light range of 400nm to 650nm, with a constant temperature of 4500K. It has high-fidelity color reproduction ability for various stained specimens, especially for colors that are difficult to distinguish under ordinary LED lights such as cyan, purple, and pink, and has super strong color rendering ability.

Antibacterial coating

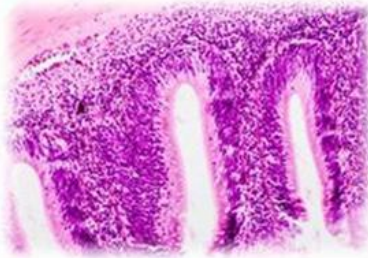
Microorganisms and viruses can be transmitted through contact, so we have treated all contact points with antibacterial additives to create a healthy laboratory environment.

Automatic light intensity management function:

By operating the LIMVSET key and dimming, different objective lenses can be independently set for brightness in advance, so that the brightness can always be maintained in the best state regardless of the magnification switch in daily use.

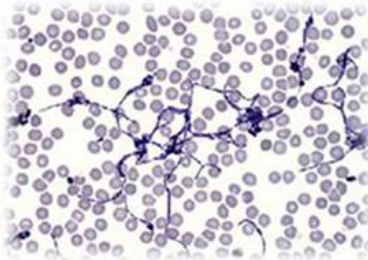
USB output to computer control

Through the USB data port at the back of the fuselage, it can be directly connected to the computer, and various electronic components of the microscope can be controlled through software, including cameras, stage objective lens turntables, bright field transmission light sources, fluorescent light sources, electric diaphragms, and electric polarizers.



Tissue slice observation does not require cumbersome operations and complex settings

No special settings are required, and the factory mode can achieve perfect observation of tissue sections stained with conventional H. E staining; the specially designed simulated full-spectrum SUPERMLED™ high-power light source combined with the Kohler lighting system can easily obtain clear images with equal brightness, high contrast, and soft color temperature from 4x to 100x observation, and can easily distinguish stained colors such as blue, purple, and pink that are difficult to restore with high fidelity under ordinary microscopes



High-contrast objective lenses for observing blood cells, chromosomes, and microorganisms

The new ECGO infinite bidirectional chromatic aberration calibration system objective lens with a new optical architecture has three zoom distance designs of 45mm, 60mm, and 95mm, which can balance high resolution and long working distance, as well as special biology-specific 40x and 100x coverslip-free objective lenses, making it easier for users to capture microscopic structures of bacteria and chromosomes more clearly during coverslip-free sample detection.

A tool for observing details of animal and plant packaging - dark field condenser

High-quality equal-path dark-field condenser provides more perfect dark-field illumination while suppressing the chromatic aberration of the objective lens, making the image edges of the observed sample sharp and clear, not only ensuring uniform background, but also ensuring uniform brightness throughout the field of view

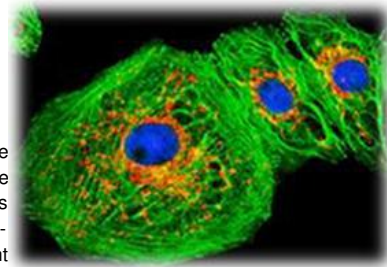


Easy acquisition of high signal-to-noise ratio fluorescent images

Using a traditional fluorescence microscope to take high-quality fluorescence images takes up a long time for users: the background is not black enough, the signal is not strong enough, the details are unclear, and the quenching speed is too fast... Moreover, we use OD6 high transmittance IBS hard coating filter, self-developed ultra-high-power LumiCite series solid-state fluorescence dedicated light source, fluorite material high transmittance high-resolution fluorescence objective lens, electronic shutter, software programmed exposure control, making fluorescence shooting no longer difficult, and work efficiency has improved by leaps and bounds.

Observation of polymer materials, starch, crystals, cosmetics, and traditional Chinese medicine - polarizing

For the above applications, high-performance polarizing accessories are essential. We use a seventh-generation thin polarizer with a higher extinction ratio and no change in color temperature to improve the orthogonal background contrast. The standard 45mm polarizer can be placed at the light source outlet, and the 30mm polarizer can be placed in the DIC slot of the objective lens turntable. It is extremely convenient to push in and pull out, and there is no need to increase the cost of purchasing additional slot accessories.



A12.2255, A13.2255, A16.2255 Specification

OPTO-EDU



Item.	A12.2253 Full Motorized Laboratory Biological Microscope Series	A12.2255 Biological	A16.2255 Fluorescent	A13.2255 Metallurgical	Model. No	Part No.
Optical System	ECGO Infinity Plan Mutual Achromatic Optical System, Confocal: 45mm	•	•	•		
	Standard Observation Method	BF	BF,FL	BF/DF		
	Optional Observation Method	DF,PH,PL,FL	DF,PH,PL	PL, DIC		
Main Body Focusing Transmit Light LIM Motorized	SC53F Manual Body, --Power Supply For Both Transmit & Reflect Light, One Key Switch T/R --Transmit Kohler Illumination Built-in --LIM, Light Intensity Management, Brightness Memory & Restore --ECO, Auto Power Off Function --USB Port, Connect To Computer, Support Software Control Microscope	○	○	○	A54.2201-S53F	SC53F
	SC53F2 Motorized XYZRLCC Body --All Functions of SC53F, Plus Computer Software Control: --Motorized X/Y/Z Stage Moving --Motorized Revolving Nosepiece --Motorized Light Control --Motorized Condenser Control --Motorized Capture Photo & Video	○	○	○	A54.2201-S53F2	SC53F2
	SC63F Motorized XYZRLCC Body --All Functions of SC53F, Plus Computer Software Control: --Motorized X/Y/Z Stage Moving, Z Axis With Grating Ruler --Motorized Revolving Nosepiece --Motorized Light Control --Motorized Condenser Control --Motorized Capture Photo & Video	•	•	•	A54.2201-S53F2	SC63F
	Arm For Installing Nosepiece, Fixed To Main Body By 4 Screws	•	/	/	A54.2201-SA	SC3-ARM
Head & Video Adapter	Trinocular Head, Light Split (0/100, 50/50), FN=23mm	○	○	•	A53.2201-ST01	U-TR30
	Trinocular Head, Light Split (0/100, 50/50, 100/0), Ultra Wide FN=26.5	•	•	○	A53.2201-ST02	U-TR30-2
	1.0x C-Mount, For Sensor 2/3"~4/3", Used With ST01, ST02	•	•	•	A55.2201-1xC	U-TV1XC+U-TVDP
	Focus Compensator For 1x C-Mount	•	•	•	A55.2201-1xC	U-TVDP
	0.63x C-Mount, For Sensor 1/1.8"~2/3", Used With ST01, ST02	○	○	○	A55.2201-63xC	U-TV0.63XC
	0.5x C-Mount, For Sensor 1/2"~1/1.8", Used With ST01, ST02	○	○	○	A55.2201-05xC	U-TV0.5XC
	Erect Image Trinocular, Light Split (0/100, 50/50), Ultra Wide FN=26.5	○	○	○	A53.2201-ST03	U-SWTR
	0.63x C-Mount, For Sensor 1/1.8"~2/3", Used With ST03	○	○	○	A55.2201-63xB	U-TV0.63XB
	Erect Image Trinocular, Light Split (50/50), Ultra Wide FN=26.5, Tilttable 0-45°	○	○	○	A53.2201-ST04	U-TTR
Eyepiece	1.0x C-Mount, For Sensor 2/3"~4/3", Used With ST04	○	○	○	A55.2201-1xA	U-TV1XA
	0.63x C-Mount, For Sensor 1/1.8"~2/3", Used With ST04	○	○	○	A55.2201-63xA	U-TV0.63XA
	Ultra Wide Field 10x/23mm, Diopter Adjustable -2~+8°, With Eyecup	•	•	•	A51.2201-1023	WHN10X-H
Nosepiece	Ultra Wide Field 10x/25mm, Diopter Adjustable -2~+8°, With Eyecup	○	○	○	A51.2201-1025	SWHN10X-H
	Ultra Wide Field 10x/26.5mm, Diopter Adjustable -2~+8°, With Eyecup	○	○	○	A51.2201-1026.5	SWH10X-H
	6 Holes Coded Manual Nosepiece, M20.32 Screw (RMS)	○	○	/	A54.2202-S6	SC3-D6RE
	6 Holes Motorized Nosepiece, M20.32 Screw (RMS)	•	•	/	A54.2203-6	M-6REA
	5 Holes Manual Nosepiece, M26 Screw, For BF/DF, Center Adjustable	/	/	○	A54.2202-UP5BD	U-P5RE-BD
PLCN	5 Holes Motorized Nosepiece, M26 Screw, For BF/DF	/	/	•	A54.2203-5BD	M-5BDREA
	5 Holes Motorized Nosepiece, M26 Screw, Center Adjustable	/	/	○	A54.2203-5CA	M-265RES
	PLCN Infinity Plan Achromatic Objective, Cover Glass- 0.17				A51.2201	
	4X, N.A=0.10, W.D=17mm, OFN=23	○	○	/	A51.2202-4	PLCN4X

Objective	10X, N.A=0.25, W.D=10mm, OFN=23	○	○	/	A51.2202-10	PLCN10X
	20X, N.A=0.40, W.D=3mm, OFN=23	○	○	/	A51.2202-20	PLCN20X
	40X, N.A=0.65, W.D=0.6mm, OFN=23	○	○	/	A51.2202-40	PLCN40X
	60X, N.A=0.80, W.D=3mm, OFN=23	○	○	/	A51.2202-60	PLCN40X
	100X, N.A=1.25, W.D=0.25mm, OFN=23	○	○	/	A51.2202-100	PLCN100XO
	UPLN Infinity Plan Achromatic Objective, Cover Glass- 0.17				A51.2203	
	4X, N.A=0.13, W.D=17mm, OFN=26.5	●	○	/	A51.2203-4	UPLN4X
	10X, N.A=0.30, W.D=10mm, OFN=26.5	●	○	/	A51.2203-10	UPLN10X
	20X, N.A=0.50, W.D=3mm, OFN=26.5	●	○	/	A51.2203-20	UPLN20X
	40X, N.A=0.75, W.D=0.6mm, OFN=26.5	●	○	/	A51.2203-40	UPLN40X
	100X, N.A=1.3, W.D=0.25mm, OFN=26.5	●	○	/	A51.2203-100	UPLN100XO
Fluorescent Objective	UPLFLN Infinity Plan Semi-APO FL Objective, Cover Glass- 0.17				A5F.2201	
	4X, N.A=0.15, W.D=12mm, OFN=26.5	○	●	/	A5F.2211-4	UPLFLN4X
	10X, N.A=0.30, W.D=9mm, OFN=26.5	○	●	/	A5F.2211-10	UPLFLN10X
	20X, N.A=0.65, W.D=2.3mm, OFN=26.5	○	●	/	A5F.2211-20	UPLFLN20X
	40X, N.A=0.9, W.D=0.7mm, OFN=26.5	○	●	/	A5F.2211-40	UPLFLN40X
	100X, N.A=1.3, W.D=0.3mm, OFN=26.5	○	●	/	A5F.2211-100	UPLFLN100XO
Metallurgical BF Objective	MPLFLN Infinity Plan Semi-Apo EPI BF Objective				A5M.2211	
	5X, N.A=0.16, W.D=16mm, OFN=26.5	/	/	○	A5M.2211-5	MPLFLN5X
	10X, N.A=0.30, W.D=9mm, OFN=26.5	/	/	○	A5M.2211-10	MPLFLN10X
	20X, N.A=0.45, W.D=3mm, OFN=26.5	/	/	○	A5M.2211-20	MPLFLN20X
	50X, N.A=0.80, W.D=3mm, OFN=26.5	/	/	○	A5M.2211-50	MPLFLN50X2
	100X, N.A=0.90, W.D=1.1mm, OFN=26.5	/	/	○	A5M.2211-100	MPLFLN100X
	20X-L, N.A=0.40, W.D=12mm, OFN=26.5	/	/	○	A5M.2211-20L	LMPLFLN20X
	50X-L, N.A=0.60, W.D=9.5mm, OFN=26.5	/	/	○	A5M.2211-50L	LMPLFLN50X
	100X-L, N.A=0.80, W.D=3mm, OFN=26.5	/	/	○	A5M.2211-100L	LMPLFLN100X
	NEOPLAN Infinity Semi-APO FL EPI BF Objective, High Resoluition For Industry Fluorescent Observation				A5M.2212	
	2.5X, N.A=0.08, W.D=10mm, OFN=26.5	/	/	○	A5M.2212-2.5	NEOPLAN2.5X
	5X, N.A=0.16, W.D=15mm, OFN=26.5	/	/	○	A5M.2212-5	NEOPLAN5X
	10X, N.A=0.30, W.D=15mm, OFN=26.5	/	/	○	A5M.2212-10	NEOPLAN10X
	20X, N.A=0.55, W.D=5mm, OFN=26.5	/	/	○	A5M.2212-20	NEOPLAN20X
	20X-L, N.A=0.50, W.D=9mm, OFN=26.5	/	/	○	A5M.2212-20L	NEOPLAN20XL
	20X-L, N.A=0.45, W.D=12mm, OFN=26.5	/	/	○	A5M.2212-20SL	NEOPLAN20XS L
	50X, N.A=0.85, W.D=1mm, OFN=26.5	/	/	○	A5M.2212-50	NEOPLAN50X
	50X-L, N.A=0.80, W.D=2mm, OFN=26.5	/	/	○	A5M.2212-50L	NEOPLAN50XL
	50X-L, N.A=0.55, W.D=8.7mm, OFN=26.5	/	/	○	A5M.2212-50SL	NEOPLAN50XS L
	100X-L, N.A=0.80, W.D=3.1mm, OFN=26.5	/	/	○	A5M.2212-100	NEOPLAN100XL
Metallurgical BF/DF Objective	MPLFLN Infinity Plan Semi-APO EPI BD Objective				A5M.2215	
	5X, N.A=0.16, W.D=16mm, OFN=26.5	/	/	●	A5M.2215-5	MPLFLN5XBD
	10X, N.A=0.30, W.D=9mm, OFN=26.5	/	/	●	A5M.2215-10	MPLFLN10XBD
	20X, N.A=0.45, W.D=3mm, OFN=26.5	/	/	○	A5M.2215-20	MPLFLN20XBD
	50X, N.A=0.80, W.D=3mm, OFN=26.5	/	/	○	A5M.2215-50	MPLFLN50XBD
	100X, N.A=0.90, W.D=1.1mm, OFN=26.5	/	/	○	A5M.2215-100	MPLFLN100XBD
	20X-L, N.A=0.40, W.D=12mm, OFN=26.5	/	/	●	A5M.2215-20L	LMPLFLN20XBD
	50X-L, N.A=0.60, W.D=5mm, OFN=26.5	/	/	●	A5M.2215-50L	LMPLFLN50XBD
	100X-L, N.A=0.80, W.D=3mm, OFN=26.5	/	/	●	A5M.2215-100L	LMPLFLN100XBD
	MXAPO Infinity Plan Semi-APO FL EPI BD Objective High Resoluition For Industry Fluorescent Semi-Conductor Observation				A5M.2216	
	5X, N.A=0.15, W.D=15mm, OFN=26.5	/	/	○	A5M.2216-5	MXAPO5XBD
	10X, N.A=0.30, W.D=14mm, OFN=26.5	/	/	○	A5M.2216-10	MXAPO10XBD
	20X, N.A=0.55, W.D=4mm, OFN=26.5	/	/	○	A5M.2216-20	MXAPO20XBD
	50X, N.A=0.80, W.D=4mm, OFN=26.5	/	/	○	A5M.2216-50	MXAPO50XBD
	100X, N.A=0.90, W.D=1mm, OFN=26.5	/	/	○	A5M.2216-100	MXAPO100XBD
	20X-L, N.A=0.50, W.D=9mm, OFN=26.5	/	/	○	A5M.2216-20L	MXAPO20XBDL
	50X-L, N.A=0.85, W.D=1mm, OFN=26.5	/	/	○	A5M.2216-50L	MXAPO50XBDL
	20X-L, N.A=0.85, W.D=3mm, OFN=26.5	/	/	○	A5M.2216-100L	MXAPO100XBDL
LWD Objective	MPLSAPO Infinity Plan APO FL LWD Objective, Confocal 95mm For Large Sample, High Temperature Heating Sample Observation				A5M.2231	
	2X, N.A=0.06, W.D=35mm, OFN=26.5	○	○	○	A5M.2231-2	MPLSAPO2X
	5X, N.A=0.15, W.D=45mm, OFN=26.5	○	○	○	A5M.2231-5	MPLSAPO5X
	10X, N.A=0.30, W.D=35mm, OFN=26.5	○	○	○	A5M.2231-10	MPLSAPO10X
	20X, N.A=0.45, W.D=21mm, OFN=26.5	○	○	○	A5M.2231-20	MPLSAPO20X
	50X, N.A=0.75, W.D=12mm, OFN=26.5	○	○	○	A5M.2231-50	MPLSAPO50X
	100X, N.A=0.80, W.D=6mm, OFN=26.5	○	○	○	A5M.2231-100	MPLSAPO100X
	20X-L, N.A=0.3, W.D=31mm, OFN=26.5	○	○	○	A5M.2231-20L	LMPLSAPO20X
	50X-L, N.A=0.55, W.D=22mm, OFN=26.5	○	○	○	A5M.2231-50L	LMPLSAPO50X

	Adapter to Raise Height 40mm For A5M.2231 APO 95mm Objectives	○	○	○	A5M.2231-HA	BX3M-ARMAD
Working Stage	Manual Working Stage 3"x2", 255x160mm, Moving 55x75mm, Ultra Hard Nano Wear-resistant Ceramic Coating, With Damping Adjust Ring (Same As Olympus)	○	○	○	A54.2204-O32	U-SVRB
	Manual Working Stage 4"x4", Ultra Hard Nano Wear-resistant Ceramic Coating, With Damping Adjust Ring (Same As Olympus)	○	○	○	A54.2204-O44	U-SVRM
	Double Slide Holder, For Left Hand Use	○	○	/	A54.2204-SH	U-HLDT
	Metal Sample Holder, 3"x2", With Metal Plate For Reflect Light	/	/	○	A54.2204-M32	U-MSSP
	Metal Sample Holder, 3"x3", With Glass Plate For Reflect & Transmit Light	/	/	○	A54.2204-M33	U-MSSPG2
	Metal Sample Holder, 4"x4", With Glass Plate For Reflect & Transmit Light	/	/	○	A54.2204-M44	U-MSSPG
Condenser	Abbe Condenser, N.A=1.1, 4x~100x	●	●	●	A56.2201-11	U-AC2
	Achromatic Aplanatic Condenser, N.A=1.4, 10x~100x	○	○	/	A56.2201-14	U-AAC
	Manual Swing-out Condenser N.A=0.9, 1.25x~100x (1.25x~4x When Swing Out)	○	○	/	A56.2201-S	U-SC3
	Motorized Swing-out Condenser N.A=0.9, 1.25x~100x (1.25x~4x When Swing Out)	○	○	/	A56.2201-SM	U-ACE
Focusing	Coaxial Coarse & Fine Focusing, With Safety Stop Lock Ring, With Tension Adjust Ring, Focusing Range 27mm, Coarse Stroke 17.6mm, Fine Stroke 0.1m, Fine Scale 1μm;	●	●	●		
Transmit Illumination	SUPERMLED 10W LED Light House, Life Time 60000 Hours, Wide Color Gamut 4500K Color Temperature, Kohler Illumination	●	●	●	A56.2204-1	U-LHLEDC10
	SUPERMLED 18W LED Light House, Life Time 60000 Hours, Wide Color Gamut 4500K Color Temperature, Kohler Illumination	○	○	○	A56.2204-2	U-LHLEDC20
Reflect Fluorescent Illumination	Epi Fluorescent Turret Illuminator, With 4 Position, With Polarizing Slot	/	●	/	A5F.2201	SC3-URS
	Lumi Cite 9100 Solid LED Extra Large Power Illuminator, Preset 4 Wavelengths of Excitation, Wavelength 340~750nm, 80W , Support DAPI, FITC, TRITC, TxRed, Cy5	/	○	/	A5F.2201-L91	Lumi Cite 9100
	Solid LED Light Source Dimmer For Lumi Cite 9100	/	○	/	A5F.2201-LC91	LUC-05
	Lumi Cite 9300 Solid LED Extra Large Power Illuminator, Preset 4 Wavelengths of Excitation, Wavelength 330~750nm, 130W , Support DAPI, FITC, TRITC, TxRed, Cy5	/	●	/	A5F.2201-L93	Lumi Cite 9300
	Solid LED Light Source Dimmer For Lumi Cite 9300		●		A5F.2201-LC93	LUC-06
	USB 2.0 Cable Length 2m, Connect Illuminator to Controller or Computer	/	●	/	A50.2202-3	USB220-ATB
	Chinese Standard Power Adapter 220V/12V/120W DC, For Solid LED Illuminator	/	●	/	A50.2203-5	GST120A12-R7B
	Solid LED Light Source Optical Adapter	/	●	/	A5F.2201-OLY	MOT-OLY
	UV Long Pass Exciter: BP340-390, Emitter: BA420IF, Dichroic: DM410	/	●	/	A5F.2210-UVL	U-FUW
	B Long Pass Exciter BP460-495, Emitter: BA510IF, Dichroic: DM505	/	●	/	A5F.2210-BL	U-FBW
	G Long Pass Exciter: BP530-550, Emitter: BA575I, Dichroic: DM570	/	●	/	A5F.2210-GL	U-FGW
Reflect Metallurgical Illumination	Epi Metallurgical Reflect Illuminator, With BF/DF Module, Polarizing Slot	/	/	●	A5M.2201-SC	SC3-RLA
	5W LED Light House, Life Time 60000 Hours, 4500K Color Temperature	/	/	●	A5M.2201-LH1	BX3M-LEDR
Dark Field	Dark Field Condenser (Dry), N.A=0.92, 10x~100x	○	○	/	A5D.2201-D	U-DCD
	Dark Field Condenser (Oil), N.A=1.4, 10x~100x	○	○	/	A5D.2201-I	U-DCW
Phase Contrast	Universal Turret Phase Contrast Condenser, Support BF, DF, PH1, PH2, PH3	○	○	/	A5C.2201	U-PCD2
	Green Filter For Phase Contrast Dia.45mm	○	○	/	A5C.2201-G45	43IF550-W45
	UPLFLN Infinity Plan Semi-APO FL Phase Contrast Objective			/		
	4x, N.A=0.15, CG=0.17, W.D=12mm, OFN=26.5	○	○	/	A5C.2212-4	UPLFLN4XPH
	10x, N.A=0.30, CG=0.17, W.D=9mm, OFN=26.5	○	○	/	A5C.2212-10	UPLFLN10XPH
	20x, N.A=0.65, CG=0.17, W.D=2.3mm, OFN=26.5	○	○	/	A5C.2212-20	UPLFLN20XPH
	40x, N.A=0.90, CG=0.17, W.D=0.7mm, OFN=26.5	○	○	/	A5C.2212-40	UPLFLN40XPH
	100x, N.A=1.30, CG=0.17, W.D=0.3mm, OFN=26.5	○	○	/	A5C.2212-100	UPLFLN100XOPH
Polarizing	Polarizing Round Working Stage 360° Rotatable With Scale, Center Adjustable, Work With Center Adjustable Nosepiece	○	○	○	A54.2204-R	U-SRP
	Transmit Polarizer Filter Dia.45mm, Put On Transmit Light Port	○	○	○	A5P.2201-P45	RG-45-POL
	Transmit Analyzer, Insert In Nosepiece Slot	○	○	○	A5P.2201-P30	RG-30-POL
	Transmit Analyzer Holder	○	○	○	A5P.2201-P45H	U-ANT HOLDER
	Reflect Polarizer Slide, Insert In Reflect Illuminator Slot.	/	○	○	A5P.2201-A	U-PO3
	Reflect Analyzer Slide, Rotate 360°, Insert In Reflect Illuminator Slot.	/	○	○	A5P.2201-A3	U-AN360-3
DIC	DIC Slider For Reflect Light	/	/	○	A5C.2210	U-DICR
	3.0M USB 2.0 Camera, Sony 1/2" Color CMOS, Work With 0.5x C-Mount	○	○	○	A59.2271-3M	D3000-C
	6.3M USB 3.0 Camera, Sony 1/1.8" Color CMOS, Work With 0.5x/0.63x C-Mount	○	○	○	A59.2271-6.3M	D630

Digital Camera	20M USB 3.0 Camera, Sony 1" Color CMOS, Work With 1x C-Mount	○	○	○	A59.2271-20M	D2000
	8.0M USB 3.0 Fluorescent Semi-Conductor Cooling Camera, Sony 1" Color CMOS, Work With 1x C-Mount	○	○	○	A59.2272-8M	PSC603-08H
	12.8M USB3.0 Fluorescent Semi-Conductor Cooling Camera, Sony 1" Color CMOS, Work With 1x C-Mount	●	●	●	A59.2272-12.8M	PSC603-12H
Software	Oplenic Professional Microscope Analysis Software, Support Function: --Motorized XYZ Stage Control From Software --Motorized Fluorescent Band Switch From Software --Motorized Nosepiece Control Switch Objective Lens From Software --Calibration Auto Switch For Each Objective --Camera Parameter Auto Switch For Each Objective --Photo, Video Capture, Calibration & Measure, Parameter Adjustment etc.	●	●	●	Comes With Digital Camera. No Need Order Separately	
Motorized System	Motorized System, Work With SC53F2, SC63F Motorized Body, Need To Order Full Set:					
	Motorize X/Y Stage, --Surface Treatment: Anodizing + Wear-resistant Ceramic Coating --Moving Range 118x76mm --Max Speed 150mm/s (2mm Ball Screw Pitch) --Repetitive Positioning Accuracy: Bidirectional <1µm --Positioning Accuracy ± 2µm --Resolution Minimum Step Size 0.03µm --Verticality<10 arcsec --Two-phase Stepper Motor --Eliminating Gaps Ball Screw --Weight 3.5kg, --SDK Support	●	●	●	A54.2206-30	HSG3000
	4 Slides Holder For Motorized X/Y Stage	●	●	●	A54.2206-30SH4	HSG-HLDT3
	Motorized Z Axis With Coded System, Directly Install On SC53F Body --Surface Treatment: Anodic Oxidation --Subdivision Accuracy: 200 Steps --Step Angl: 1.8° --Multi Circle Encoding: Support --Step Accuracy: ±0.01µm --Drive Motor: Two-phase Stepper Motor --Connection Method: Rigid Coupling --Computer Control: Support --Handle Control: Support --Weight: 0.85kg --SDK Support	●	●	●	A54.2207-3	GFDBX3
	Quarc Controller, Support Computer Software Control Motorized XYZ Stage + Motorized Nosepiece, Power 24V DC	●	●	●	A54.2208-M200	M-DRV-200
	Toton Joystick, Directly Control Motorized XYZ Stage + Motorized Nosepiece	●	●	●	A54.2208-MCP	M-CP2
Other	Immersion Oil 8ml, Reflect Ratio=1.518, Low Viscosity (135CST)	●	●	●	A50.2201-1	IMMOIL-8CC
	Chinese Standard Power Adapter 220V/24V/36W DC	●	●	●	A50.2203-2	GST36U24-P1J
	Dust Cover	●	●	●	A50.2204-1	COVER-03
	Latex Gloves	●	●	●	A50.2204-2	WF7.5MR
	Hexagonal Tool Kit 3#, 4#	●	●	●	A50.2204-3	MR6-T43
	Packing Carton	●	●	●	A50.2204-5	PK-700



A54.2201-S53F
Manual Main Body



A54.2201-S53F2, S63F
Full Motorized Main Body



A54.2201-SA



A53.2201-ST01



A53.2201-ST02



A55.2201-1xC



A53.2201-ST03



A53.2201-ST04



A55.2201-1xA



A55.2201-63xA



A55.2201-63xB



A55.2201-63xC



A55.2201-05xC



A51.2201-1023



A51.2201-1025



A51.2201-1026.5



A54.2202-S6



A54.2203-6



A54.2202-UP5BD



A54.2203-5BD



A54.2203-5CA



A51.2202 (PLCN Infinity Plan Achromatic Objective)



A51.2203 (UPLN Infinity Plan Achromatic Objective)



A5F.2211 (Fluorescent Objective: UPLFLN Infinity Plan Semi-APO FL Objective)



A5M.2231 (LWD Objective: MPLSAPO Infinity Plan APO FL LWD Objective)



A5M.2211 (Metallurgical BF Objective: MPLFLN Infinity Plan Semi-Apo EPI BF Objective)



A5M.2212 (Metallurgical BF Objective: NEOPLAN Infinity Semi-APO FL EPI BF Objective)



A5M.2215 (Metallurgical BF/DF Objective: MPLFLN Infinity Plan Semi-APO EPI BD Objective)



A5M.2216 (Metallurgical BF/DF Objective: MXAPO Infinity Plan Semi-APO FL EPI BD Objective)



A5C.2212 (Phase Contrast Objective: UPLFLN Infinity Plan Semi-APO FL Phase Contrast Objective)



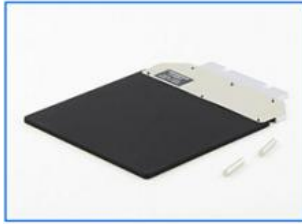
A54.2204-O32



A54.2204-O44



A54.2204-SH



A54.2204-M32



A54.2204-M33



A54.2204-M44



A56.2201-S



A56.2201-11



A56.2201-14



A56.2204-1



A56.2204-2



A5F.2201



A5F.2201-L93



A5F.2201-L91



A5F.2201-LC93



A5F.2201-LC91



A50.2202-3



A50.2203-5



A5F.2201-OLY



A5F.2210-BL



A5F.2210-GL



A5F.2210-UVL



A5M.2201-SC



A5M.2201-LH1



A5D.2201-D



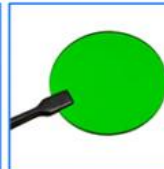
A5D.2201-I



A54.2204-R



A5C.2201



A5C.2201-G45



A5P.2201-P45



A5P.2201-P30



A5M.2231-HA



A5P.2201-A



A5P.2201-A3



A5P.2201-P45H



A5P.2210



A59.2271-3M



A59.2271-6.3M



A59.2271-20M



A59.2272-8M



A59.2272-12.8M



A54.2206-30



A54.2206-30SH4



A54.2207-3



A54.2208-M200

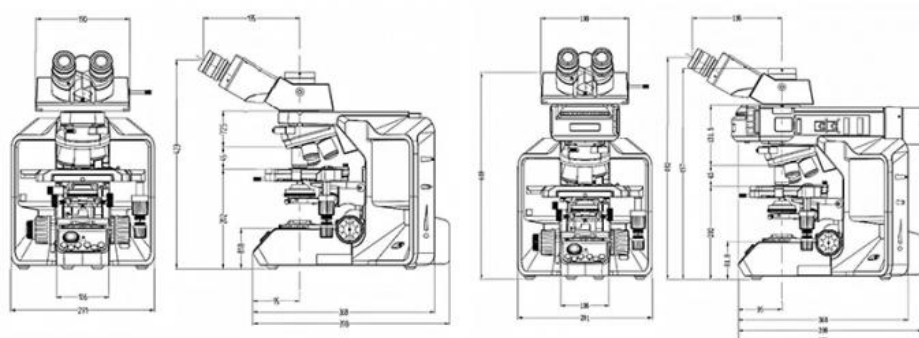
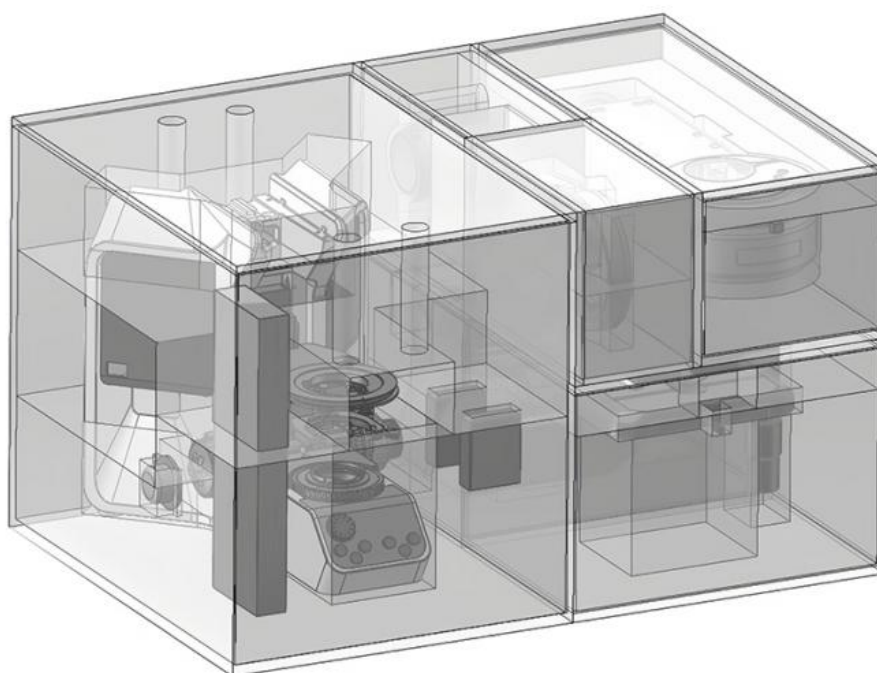


A54.2208-MCP

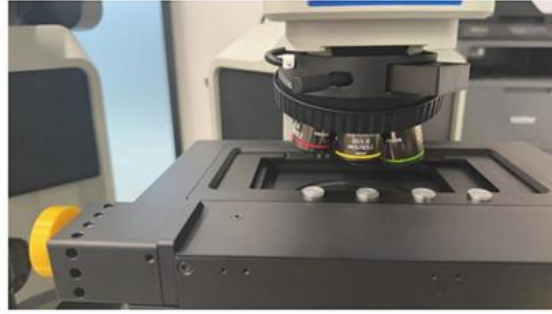
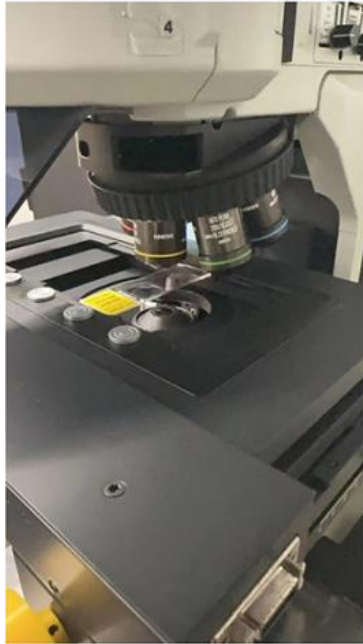
OPTO-EDU

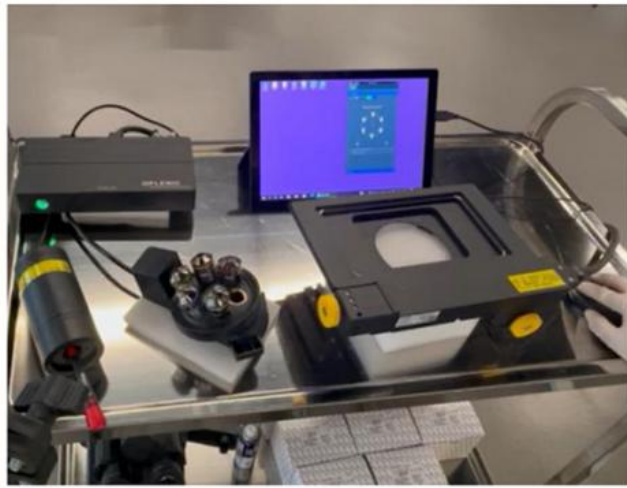
Carton Box: 695mm X 480mm X 435mm

Gross Weight: 30kg



Unit: mm





Opto-Edu (Beijing) Co., Ltd.

☎ 0086 13911110627

✉ sale@optoedu.com

🌐 cnoec.com

F-1501 Wanda Plaza, No. 18 Shijingshan Road, Beijing 100043, China