



OPTO-EDU A16.2614-UL China Supplier High Brightness Inverted Ultra LED Fluorescent Microscope Price

Our Product Introduction

Basic Information

- Place of Origin: China
- Brand Name: CNOEC, OPTO-EDU
- Certification: CE, Rohs
- Model Number: A16.2614-UL
- Minimum Order Quantity: 1 pc
- Price: Negotiation
- Packaging Details: Carton Packing, For Export Transportation
- Delivery Time: 5~20 Days
- Payment Terms: T/T, West Union, Paypal
- Supply Ability: 5000 pcs/ Month



Product Specification

- Application: Research|Learning
- Certification: CE|Rohs
- Drawtube: Trinocular
- Illumination: Transmit Light 6V30W Halogen
- Magnification: 40x - 1000x
- Theory: Fluorescence Microscope

for more products please visit us on cnoec.com

Product Description

Ultra LED High Brightness Fluorescent Reflect Illumination Inverted Microscope
 Seidentopf Trinocular Head, Light Split Switch E100:P0 / E20:P80
 Infinity Plan LWD Semi-APO BF+PH Objective 10x20x40x, Infinity Plan Fluorescent 10x,20x,
 LWD Condenser N.A.0.3 Working Distance 72mm, Up To 195mm Without Condenser
 Transmit Halogen 6V30W Koehler Illumination, 5W LED Optional For Choice



OPTO-EDU (BEIJING) CO., LTD.

OPTO-EDU

F-1501 Wanda Plaza, No.18 Shijingshan Road, Beijing 100043, China
 Tel:+8610 88696020 Fax:+8610 88696085

A16.2614-UL

Inverted Ultra LED Fluorescent Microscope, High Brightness





A14.2603-TR
Inverted Biological Microscope,
Transmit 5W LED, Reflect 5W LED

A14.2603
Inverted Biological Microscope,
Transmit Halogen 6V30W



A16.2614
Inverted Fluorescent Microscope,
Reflect Fluorescent 100W Mercury Lamp

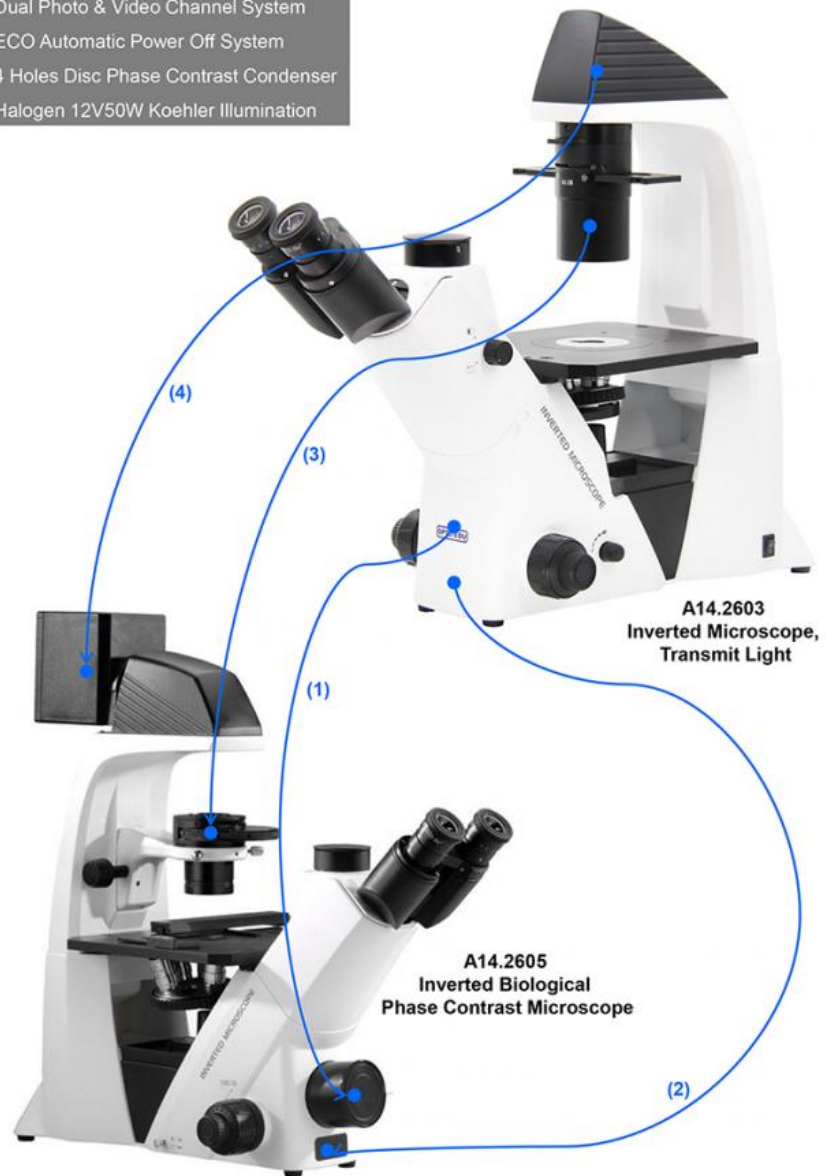


A16.2614-L
Inverted Fluorescent Microscope,
Reflect 5W LED Fluorescent Illumination



A16.2614-UL Most Recommended 2025!
Inverted Fluorescent Microscope,
5W LED + Fluorescent Filter Fix & Move Together
Providing Ultra-high Brightness Fluorescent Light Source.

- (1) Dual Photo & Video Channel System
- (2) ECO Automatic Power Off System
- (3) 4 Holes Disc Phase Contrast Condenser
- (4) Halogen 12V50W Koehler Illumination



A14.2603 Details



Head & Eyepiece

Seidentopf Trinocular Head Inclined 45° Interpupillary Distance 48~76mm, Light Split Switch E100:P0 / E20:P80; WF10x/22mm, Dia.30mm, High Eyepoint, Diopter Adjustable



Condenser & Light Source

Condenser & Light Source With Filters: Blue, Dia.34mm; Green, Dia.34mm
 Koehler Illumination Halogen 6V/30W For A14.2603
 Koehler Illumination 5W LED For A14.2603-TR



Long Working Distance

Working Distance 72mm (With Condenser), 195mm (Without Condenser)



Mechanical Working Stage

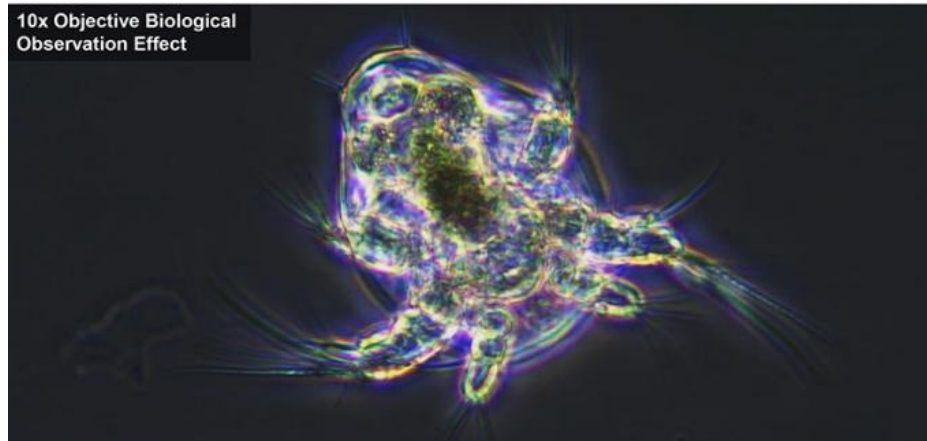
Size 210x241mm, Round Slide Size Φ 110mm
 Culture Dish Holder 54mm



Attachable Mechanical Stage For 96 Holes Plate



A5C.2635
LWD Infinity Plan PH+BF
FL Semi-APO Objectives



**10x Objective Biological
Observation Effect**

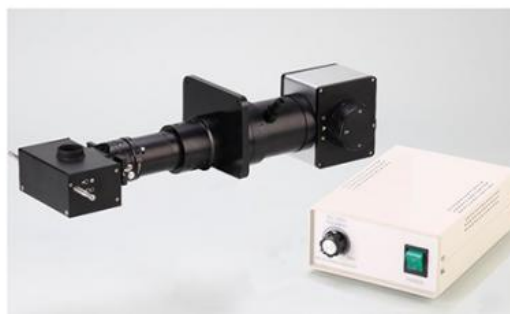
Fluorescent Accessories

OPTO-EDU



A5F.2603 Epi Fluorescent System For A16.2614

3 Holes Fluorescent Slide Unit, With Field Diaphragm, Center Adjustable
100W Mercury Lamp House, 100W Mercury Power Box, Digital Disp. Ultraviolet Protection Barrier



A5F.2604 Epi LED Fluorescent System For A16.2614-L

3 Holes Fluorescent Slide Unit, With Field Diaphragm, Center Adjustable
5W LED Lamp House, 5W LED Power Box. Ultraviolet Protection Barrier



A5F.2606 Ultra LED Fluorescent System For A16.2614-UL

5W LED + Fluorescent Filter Fix & Move Together
Providing Ultra-high Brightness Fluorescent Light Source

A14.2603/A16.2614 Series Specification

OPTO-EDU

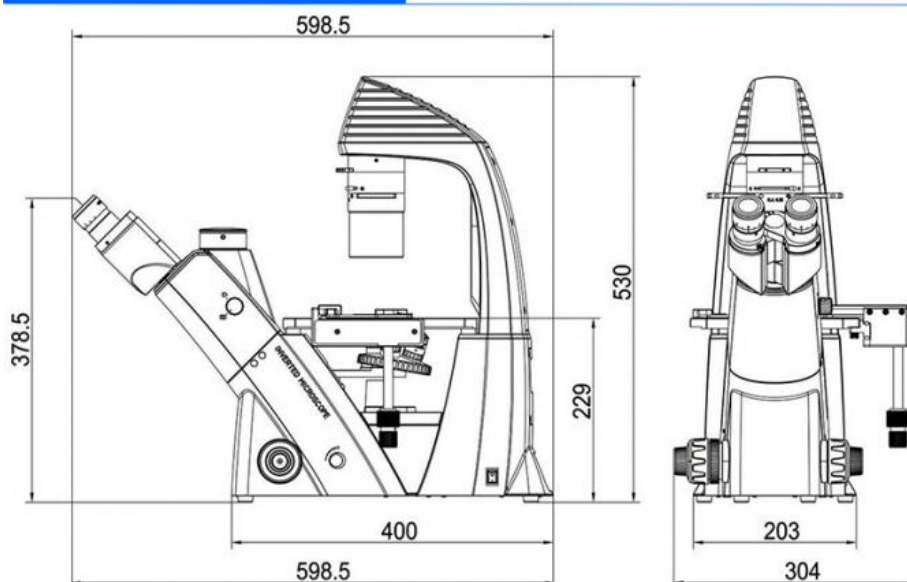


Items	A14.2603 Inverted Biological Microscope A16.2614 Inverted Fluorescent Microscope	A14.2603		A16.2614			Cata. No.
			-TR		-L	-UL	
Head	Seidentopf Trinocular Head Inclined 45°, Interpupillary Distance 48~76mm, Light Split Switch E100:P0 / E20:P80	•	•	•	•	•	A53.2643
Eyepiece	WF10x/22mm, Dia.30mm, High Eyepoint,, Diopter Adjustable	•	•	•	•	•	A51.2621-1022
	WF15X/16mm, Dia.30mm, High Eyepoint, Diopter Adjustable	○	○	○	○	○	A51.2621-1516
	WF20X/12mm, Dia.30mm, High Eyepoint, Diopter Adjustable	○	○	○	○	○	A51.2621-2012
Nosepiece	Quintuple	•	•	•	•	•	A54.2610-N925
LWD Infinity Plan FL Semi-APO Objectives	Plan FL 2x/0.06 W.D.=7.2mm	○	○	○	○	○	A5F.2635-2
	L Plan FL 4x/0.11 W.D.=12.1mm	○	○	○	○	○	A5F.2635-4
	L Plan FL 10x/0.25 W.D.=10.3mm	○	○	○	○	○	A5F.2635-10
	L Plan FL 20x/0.45 W.D.=5.8mm	○	○	○	○	○	A5F.2635-20
	L Plan FL 40x/0.65 W.D.=5.1mm	○	○	○	○	○	A5F.2635-40
LWD Infinity Plan FL Semi-APO BF+PH Objectives	L Plan FL PHP 4x/0.10 W.D.=9.2mm	○	○	○	○	○	A5C.2635-4
	L Plan FL PHP 10x/0.25 W.D.=10.3mm	•	•	•	•	•	A5C.2635-10
	L Plan FL PHP 20x/0.45 W.D.=5.8mm	•	•	•	•	•	A5C.2635-20
	L Plan FL PHP 40x/0.65 W.D.=5.1mm	•	•	•	•	•	A5C.2635-40
LWD Infinity Plan Fluorescent Objectives	New Update 2024 Specialized For Fluorescent Observation!						
	L PLAN Fluor 10x, N.A.0.3,W.D.=14.0mm	-	-	•	•	•	A5F.2636-10
	L PLAN Fluor 20x, N.A.0.45,W.D.=6.6mm	-	-	•	•	•	A5F.2636-20
	L PLAN Fluor 40x, N.A.0.65,W.D.=3.9mm	-	-	○	○	○	A5F.2636-40
Phase Contrast	Centering Telescope 11x	○	○	○	○	○	A5C.2610
	Annular Spot 4x	○	○	○	○	○	A5C.2611-4
	Annular Spot 20x/ 40x	•	•	•	•	•	A5C.2611-10
	Annular Spot 10x	•	•	•	•	•	A5C.2611-20/40
Working Stage	Mechanical Stage Size 210x241mm, Round Slide Size Φ110mm	•	•	•	•	•	A54.2601-D4
	Attachable Mechanical Stage For 96 Holes Plate Moving Range 128x80mm	○	○	○	○	○	A54.2605
	Culture Dish Holder 65mm	○	○	○	○	○	A54.2606-65
	Culture Dish Holder 54mm	○	○	○	○	○	A54.2606-54

[illegible]

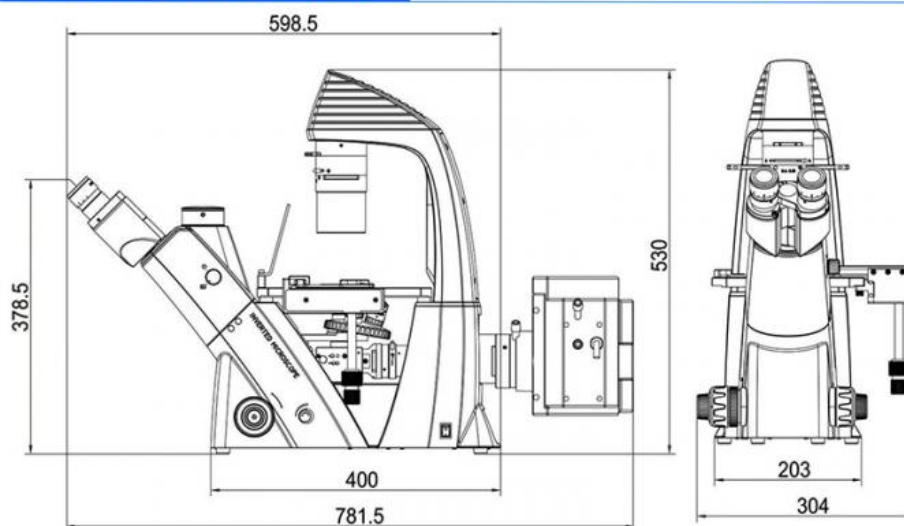
A14.2603 Series Size(mm)

OPTO-EDU



A16.2614 Series Size(mm)

OPTO-EDU



A14.2603/A16.2614 Series Accessories

OPTO-EDU





A51.2621-1022
WF10x/22mm



A51.2621-1516
WF15x/16mm



A51.2621-2012
WF20x/12mm



A56.2616
Filter: Blue, Green;
Amber; Grey



A5C.2610 Centering Telescope 11x
A5C.2611 Annular Spot 10x/20x/40x



Ultraviolet Protection Barrier



A54.2605
Attachable Mechanical Stage For 96
Holes Plate Moving Range 128x80mm



A54.2601-D4
Mechanical Stage Size 210x241mm
Round Slide Size Φ 110mm



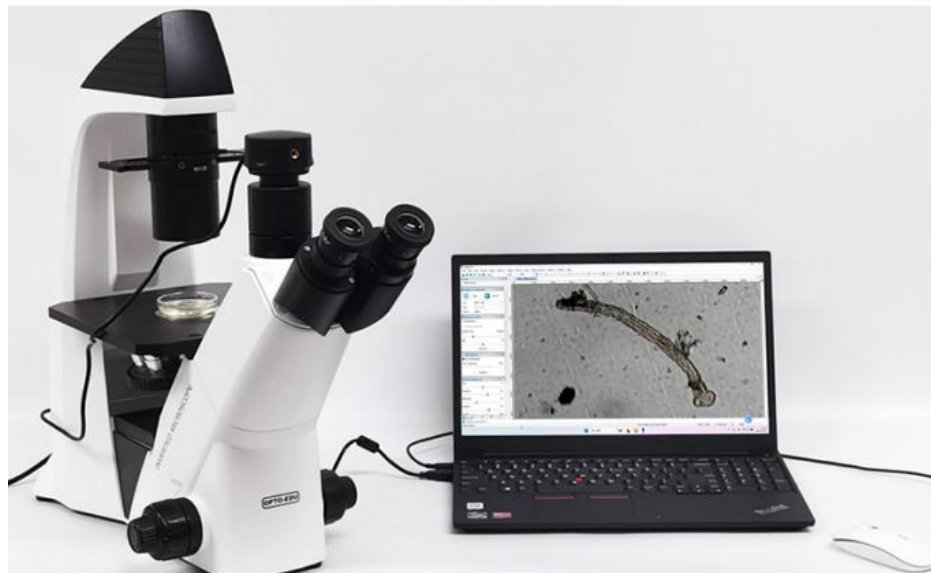
A54.2606-65 & A54.2606-35
Culture Dish Holder 65mm & Culture
Dish Holder 35mm (Optional)



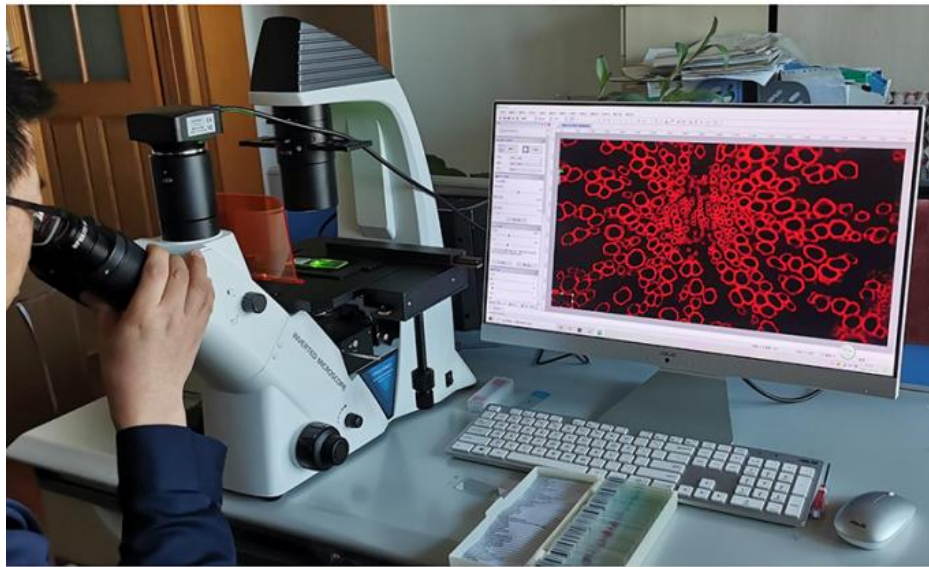
A54.2606-54
Culture Dish Holder 54mm
(Optional)



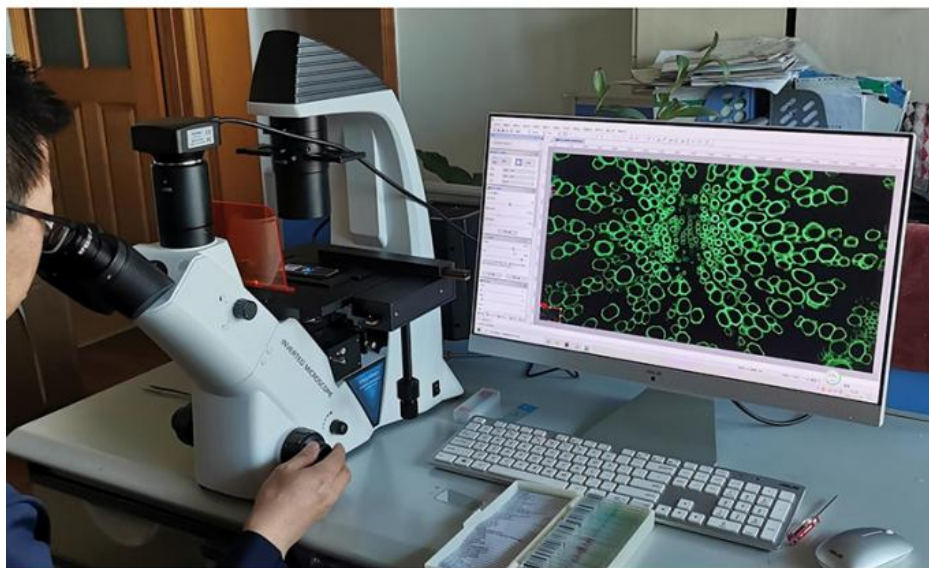
A14.2603 Observation Of Plant Slices



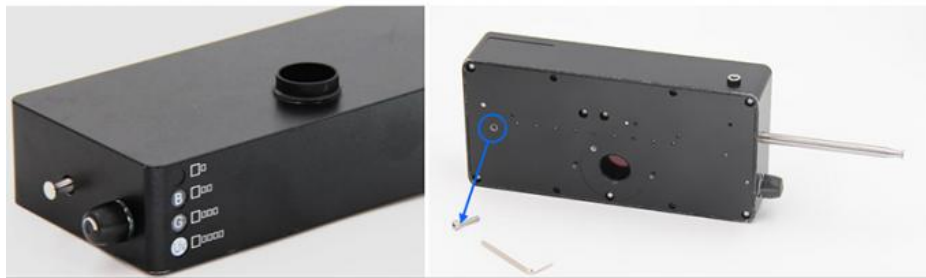
A14.2603 Observation Of Microorganisms In Flowerpot Water



A16.2614 Green Filter Live Photo On Site



A16.2614 Bule Filter Live Photo On Site



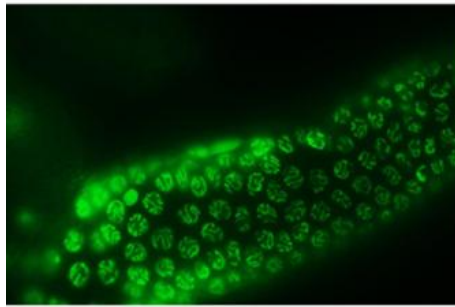
A5F.2606 Ultra LED Fluorescent System



A16.2614-UL Blue Filter Live Photo On Site



A16.2614-UL Green Filter Live Photo On Site

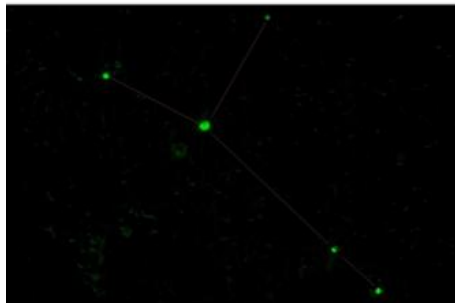
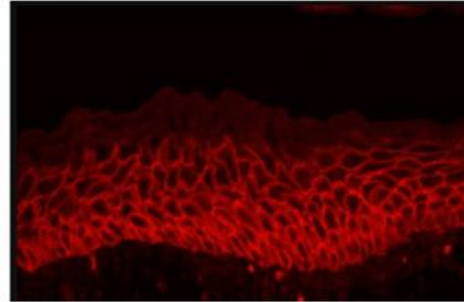


Galloping chromosome

The gonads of *C. elegans* are long-shaped, and the cells in the specific period of meiosis are concentrated in specific areas. The period of the cells can be easily distinguished by observing the morphological characteristics of the chromosomes. The different forms of chromosomes in different periods are like showing us our unique dance.

Huge spark

Visually show the morphological characteristics and levels of stratified squamous cells. Preparation method: Immunofluorescence staining (E-cadherin) was performed on the oral mucosa tissue of mice, and the staining results were observed under a fluorescence microscope and photographed.



Cancer Galaxy

The gfp fluorescent plasmid expressed in stable phase was transferred to *S. aureus*, and after treatment with high concentration antibiotics overnight, the formation of drug-resistant retaining cells was detected by fluorescence inverted microscope. *S. aureus* with the gfp plasmid elicited green fluorescence, forming a pattern similar to that of the Cancer galaxies.

Phoenix tail feather

By immunofluorescence assay, the TUBULIN protein was labeled with a red fluorescent secondary antibody (rhodamine) to show the morphology of the microtubules, and the nuclei were stained with DAPI to make them blue. The processed cell slides were placed under a fluorescence microscope for observation and imaging.

