



OPTO-EDU A16.2603-UL LED Fluorescent Light Microscopy 6V 30W Halogen Ultra LED Fluorescent Microscope

Our Product Introduction

Basic Information

- Place of Origin: China
- Brand Name: CNOEC, OPTO-EDU
- Certification: CE, Rohs
- Model Number: A16.2603-UL
- Minimum Order Quantity: 1 pc
- Price: Negotiation
- Packaging Details: Carton Packing, For Export Transportation
- Delivery Time: 5~20 Days
- Payment Terms: T/T, West Union, Paypal
- Supply Ability: 5000 pcs/ Month



Product Specification

- Application: Research|Learning
- Certification: CE|Rohs
- Drawtube: Trinocular
- Illumination: Transmit Light 6V30W Halogen
- Magnification: 40x - 1000x
- Theory: Fluorescence Microscope

Product Description

Upgradeable to Semi-APO Fluorescent Objectives & 100x Water Objective
 5W LED Fluorescent Light Source For Observe In Pathology, Clinical Lab Use
 Large Head Eyepiece Tube Dia.30mm + Super Wide Field SWF10x/22mm Eyepiece
 Rackless Large Mechanical Stag 182x140mm/77x52mm With Double Slide Holder
 Swing Out Condenser N.A. 0.9/0.13 + High Brightness 6V30W Halogen Koehler Illumination



OPTO-EDU (BEIJING) CO., LTD.

F-1501 Wanda Plaza, No.18 Shijingshan Road, Beijing 100043, China
 Tel:+8610 88696020 Fax:+8610 88696085

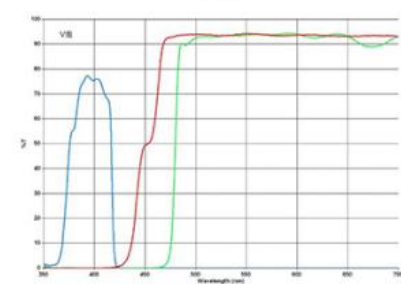
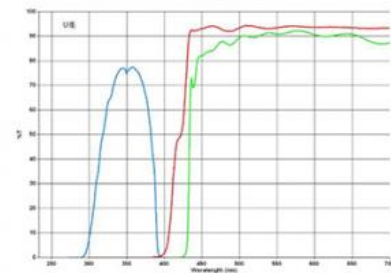
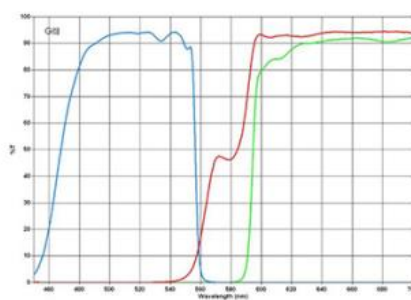
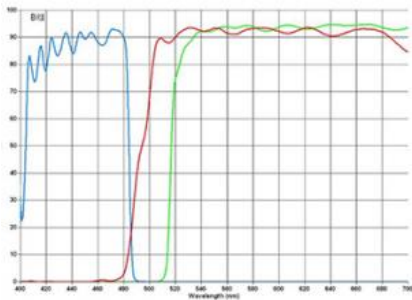
A16.2603-UL

Ultra LED Fluorescent Microscope, Semi-APO



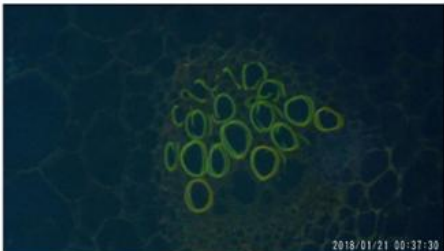
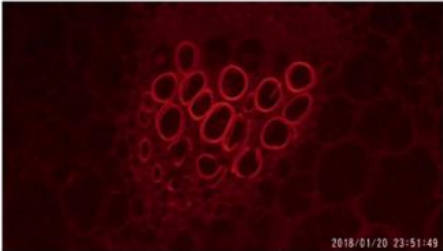
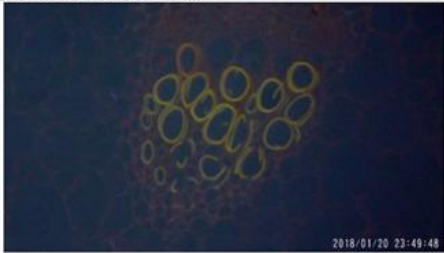
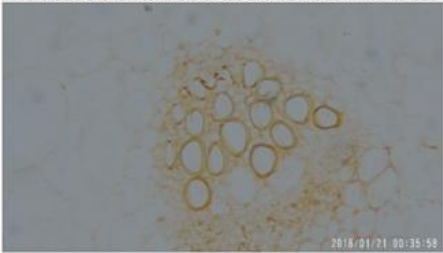


Fluorescent Filters



| Fluorescent Filters | Exciter (nm) | Dichroic (nm) | Emitter (nm) |
|---------------------|--------------|---------------|--------------|
| UV | 330-380 | 400 | 435 |
| V | 380-420 | 430 | 460 |
| B | 420-490 | 505 | 520 |
| G | 500-550 | 575 | 590 |

* More Fluorescent Filters Optional At A5F.2620, A5F.2621, Contact Us For Detail.



Product Details



Super Wide Field Eyepiece
SWF10x/22mm
Eyepiece Dia.30mm Diopter Adjustable



The Eyepiece Tube Has Fix Screw
To Prevent Eyepiece Falling Damage During Move



Fixed E80:P20



E100:P0/E0:P100

Trinocular Head Light Split Optional Between Switch E100:P0/E0:P100 & Fixed E80:P20
In Fixed Light Split, Eyepiece 80% : Photo 20% User Can View Image At Same Time In Both Path
In Switch Light Split, Eyepiece 100%:Photo 0% / Eyepiece 0%:Photo 100%, Camera Can Have 100% Light For Photo Capture.



Large Size High Precision Quintuple Nosepiece, With Polarizing Analyzer Slot, Infinity Plan Objective 4x,10x,20x,40x,100x Available

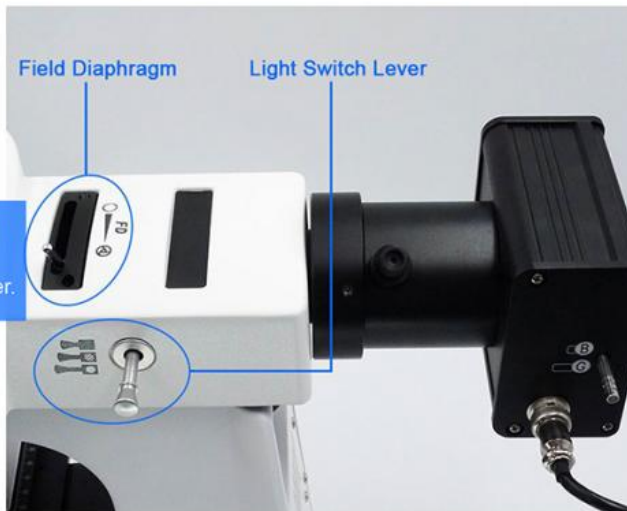
Creative 100X Water Objective (Optional) Instead Of 100X Oil Objective, More Convenient For Using & Cleaning After Use

Rackless (Integrated) Mechanical Stage
Large Size 182×140mm, Double Slide Holder
Travel Range 77×52mm



Swing-out Condenser, N.A.0.9/0.13, Iris Diaphragm
Control The Amount Of Light According To Demand, The Effect Is More Perfect.

5W LED Lamp Fluorescent Illumination Unit, With Field Diaphragm, Light Switch Lever.

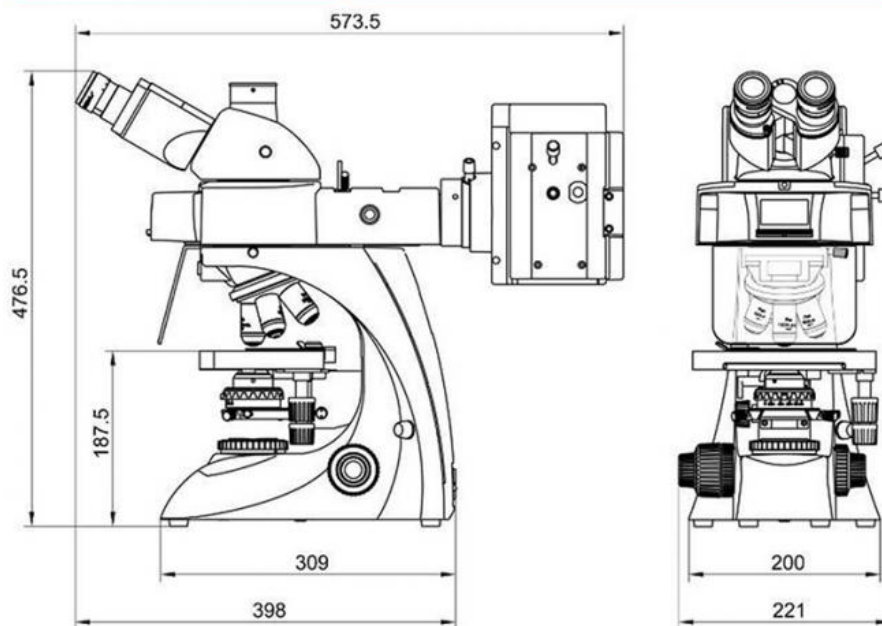


| Items | A16.2603-UL LED Fluorescent Microscope Specification | Cata. No. |
|---|---|-----------------|
| Head | Seidentopf Binocular Head Inclined 30°, Rotatable 360°, Interpupillary Distance 48-76mm, Eyepiece Tube Dia.30mm | • A53.2623-B |
| | Seidentopf Trinocular Head Inclined 30°, Rotatable 360°, Interpupillary Distance 48-76mm, Light Split Switch E100:P0/E20:P80, Eyepiece Tube Dia.30mm | ○ A53.2623-T |
| Eyepiece | WF10x/22mm, Dia.30mm , High Eyepoint, Diopter Adjustable | • A51.2621-1022 |
| Nosepiece | Quintuple | • A54.2610-N01 |
| Infinity Plan Objective | PLAN 2.5X/0.07, W.D.=8.47mm | ○ A52.2606-2.5 |
| | PLAN 4X/0.10, W.D.=12.10mm | • A52.2606-4 |
| | PLAN 10X/0.25, W.D.=4.64mm | • A52.2606-10 |
| | PLAN 20X/0.40(S), W.D.=2.41mm | • A52.2606-20 |
| | PLAN 40X/0.66(S), W.D.=0.65mm | • A52.2606-40 |
| | PLAN 60X/0.80(S), W.D.=0.33mm | ○ A52.2606-60 |
| | PLAN 100X/1.25(S,Oil), W.D.=0.12mm | • A52.2606-100 |
| | PLAN 100X/1.15(S,Water), W.D.=0.19mm | ○ A52.2606-100W |
| Infinity Plan Semi-APO Fluorescent Objective | UplanFLN 4x, N.A.0.16, W.D.=17.151mm | ○ A5F.2611-4 |
| | UplanFLN 10x, N.A.0.30, W.D.=7.68mm | ○ A5F.2611-10 |
| | UplanFLN 20x, N.A.0.50, W.D.=1.96mm | ○ A5F.2611-20 |
| | UplanFLN 40x, N.A.0.75, W.D.=0.78mm | ○ A5F.2611-40 |
| | UplanFLN 100x(Oil), N.A.1.30, W.D.=0.15mm | ○ A5F.2611-100 |

| | | | |
|-----------------|--|---|--|
| Working Stage | Rackless (Integrated) Mechanical Stage, Size 182×140mm, Travel Range 77×52mm, Double Slide Holder | • | A54.2601-S10 |
| Focusing | Coaxial Coarse & Fine Focusing, Coarse Focusing Travel Range: 22mm, Fine Focusing Div. 0.002mm | • | |
| Condenser | Swing-out Condenser, N.A.0.9/0.13, Iris Diaphragm | • | A56.2614-07a |
| Illumination | Transmit Light 6V30W Halogen Koehler Illumination, Wide Voltage 100V~240V, Field Diaphragm | • | A56.2650-6V30WH |
| | Transmit 3W LED Koehler Illumination, Field Diaphragm Powered By Safety Low Voltage Charger, Input Wide Voltage 100V240V, Output 5V1A, Support Power Bank Supply For Outdoor Use | ○ | A56.2650-3WLED |
| Field Diaphragm | For Kohler Illumination | • | A56.2615-BK |
| Filter | Dia.45mm, Blue | • | A56.2616-45B |
| | Dia.45mm, Green | ○ | A56.2616-45G |
| | Dia.45mm, Yellow | ○ | A56.2616-45A |
| Dark Field | Dark Field Condenser, Dry, N.A.0.83-0.91, For 4x10x40x Objective | ○ | A5D.2610-BK |
| | Dark Field Condenser, Immersion, N.A.1.3, For 100x Objective | | A5D.2610-BKW |
| Polarizing | Analyzer + Polarizer Set | ○ | A5P.2601-BK |
| Phase Contrast | Infinity Plan Phase Contrast Objective 10x + Phase Contrast Slide 10x + Phase Contrast Condenser + Telescope 11x + Green Filter | ○ | A5C.2602-10 |
| | Infinity Plan Phase Contrast Objective 20x + Phase Contrast Slide 20x + Phase Contrast Condenser + Telescope 11x + Green Filter | ○ | A5C.2602-20 |
| | Infinity Plan Phase Contrast Objective 40x + Phase Contrast Slide 40x + Phase Contrast Condenser + Telescope 11x + Green Filter | ○ | A5C.2602-40 |
| | Infinity Plan Phase Contrast Objective 100x + Phase Contrast Slide 100x + Phase Contrast Condenser + Telescope 11x + Green Filter | ○ | A5C.2602-100 |
| | Turret Phase Contrast Attachment Infinity Plan Phase Contrast Objective 10x20x40x100x, Turret Phase Contrast Condenser 5-Holes, Telescope 11x, Green Filter | ○ | A5C.2603-BK |
| Fluorescence | Newly Design 2025! Ultra LED Inverted Fluorescent Microscope With All-in-One Filter + 5W LED System The LED Fluorescent Light Source And The Fluorescent Filter Are Fixed as One Unit And Move Together, Switch Easily And Providing An Ultra-high Brightness Fluorescent Light Source. A16.2603-UL2 B,G China Fluorescent Filters A16.2603-UL3 B,G,UV China Fluorescent Filters A16.2603-UL4 B,G,U,UV China Fluorescent Filters | • | A5F.2610-2 A5F.2610-3 A5F.2610-4 |
| Adapter | C-Mount 0.5x, Focus Adjustable | ○ | A55.2601-05 |
| | C-Mount 0.75x, Focus Adjustable | ○ | A55.2601-75 |
| | C-Mount 1.0x, Focus Adjustable | ○ | A55.2601-10 |
| | Digital Eyepiece Camera Adapter, Dia. 23.2mm/25mm | ○ | A55.2610 |
| Package | Microscope 55*27*36cm, 11kg, Fluorescent Unit 52*47*24cm, 5kg | | |

Note: "•" In Table Is Standard outfits, "○" Is Optional Accessories

Product Size(mm)



Product Accessories



A5F.2611
Infinity Plan Semi-APO Fluorescent Objective



A54.2601-S01
Mechanical Stage Size
175 mm x 145mm



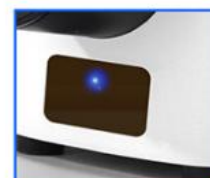
A51.2602-1020
WF10X/20mm
(High Eyepoint)



A56.2610-BK
Dark Field
Condenser, Dry



A56.2610-BKW
Dark Field
Condenser, Immersion



A56.2660
ECO, Auto
Power Off System



A52.2606 Infinity Plan Objective



**A55.2610
Digital Eyepiece
Camera Adapter**



A5P.2601-BK Analyzer + Polarizer Set



**A55.2601-10
C-Mount 1.0x,
Focus Adjustable**



**A55.2601-75
C-Mount 0.75x,
Focus Adjustable**



**A5C.2602
Simple Phase
Contrast
Attachment**

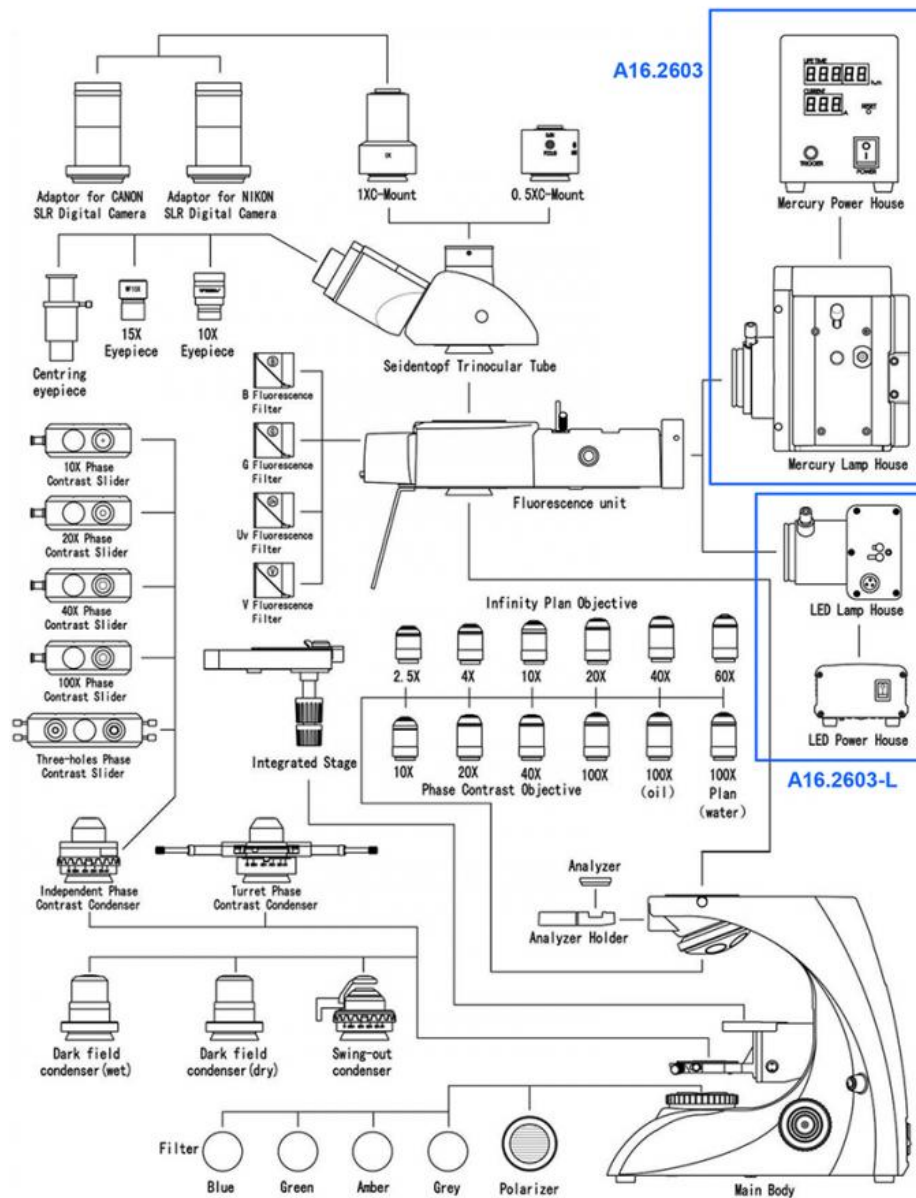


**A5C.2603 Turret
Phase Contrast Attachment**



**A55.2601-05
C-Mount 0.5x,
Focus Adjustable**

General Layout Diagram



Opto-Edu (Beijing) Co., Ltd.

☎ 0086 13911110627

✉ sale@optoedu.com

🌐 cnoec.com

F-1501 Wanda Plaza, No. 18 Shijingshan Road, Beijing 100043, China