



## OPTO-EDU M30.5815 Full Auto Microscope Slide Scanner 5 Slides

### Our Product Introduction

#### Basic Information

- Place of Origin: China
- Brand Name: CNOEC, OPTO-EDU
- Certification: CE, Rohs
- Model Number: M30.5815
- Minimum Order Quantity: 1 pc
- Price: FOB \$1~1000, Depend on Order Quantity
- Packaging Details: Carton Packing, For Export Transportation
- Delivery Time: 5~20 Days
- Payment Terms: T/T, West Union, Paypal
- Supply Ability: 5000 pcs/ Month

OPTO-EDU



#### Product Specification

- Objective: APO 20x N.A.0.8 High Quality Plan Apochromatic Objective Lens
- Camera: 5.0M Scientific Research-grade Large-area CMOS Digital Camera
- Scanning Method: High-speed Continuous Area Scanning
- Scanning Mode: Fast, Accurate, 3D, Fusion Mode
- Automatic Identification: Automatic Identification Of Tissue Area, Label Code, Character And Slide Type
- Software: Scan Software: IScanneX, Browser Software: IViewer
- Highlight: **5 Slides Microscope Slide Scanner, OPTO-EDU Microscope Slide Scanner, Full Auto Microscope Slide Scanner**

for more products please visit us on [cnoec.com](http://cnoec.com)

## Product Description

5 Standard pathology slides (75\*25mm), or 2 Standard large pathology slices (75\*50mm)

High Quality Plan Apochromatic Objective Lens APO20x N.A. 0.8

5.0M Scientific Research-grade Large-area CMOS Digital Camera

Scanning Resolution 20x Scan  $\leq 0.24\mu\text{m}/\text{pixel}$ , 40x Scan  $\leq 0.12\mu\text{m}/\text{pixel}$

Scanning Speed 15x15mm Area 20x Scan <35s, 40x Scan <50s



OPTO-EDU (BEIJING) CO., LTD.

OPTO-EDU

F-1501 Wanda Plaza, No.18 Shijingshan Road, Beijing 100043, China  
Tel:+8610 88696020 Fax:+8610 88696085

## M30.5815 Full Auto Microscope Slide Scanner



## M30.5815 Features

OPTO-EDU



### ► Digital Application

Integrates digital scanning technology, cloud platform management, and information technology



### ► Intelligent Scanning

Multi-magnification fast scanning, intelligent recognition of scanning contours



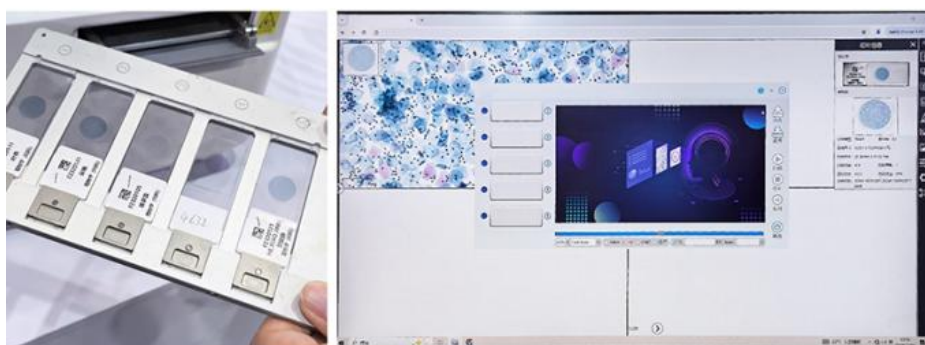
### ► High-definition Image

Equipped with high-quality plan-field apochromatic objective lens and scientific research-grade area scan camera



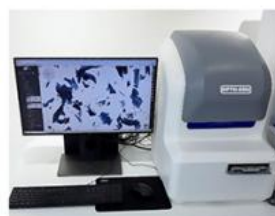
### ► Lightweight and Stable

Applicable to multiple scenarios, including: scientific research, education, medical and other industries



## M30.5815 Specification

OPTO-EDU



### M30.5815 Full Auto Microscope Slide Scanner Specification

Slide Capacity	5 Standard pathology slides (75*25mm), or 2 Standard large pathology slides (75*50mm)
Objective	APO 20x N.A.0.8 high quality plan apochromatic objective lens
Camera	5.0M Scientific research-grade large-area CMOS digital camera
Scanning Method	High-speed continuous area scanning
Scanning Resolution	20x scan $\leq 0.24\mu\text{m}/\text{pixel}$ 40x scan $\leq 0.12\mu\text{m}/\text{pixel}$
Scanning Speed	15x15mm scanning area: -20x scan, <35 seconds -40x scan, <50 seconds
Scanning Mode	Fast, Accurate, 3D, Fusion mode
Automatic Identification	Automatic identification of tissue area, label code, character and slide type

Real-time Browsing	Observe slide information without scanning, switch zoom ratios, capture, edit and export high-definition images
Software	Scan Software: iScanneX, Browser Software: iViewer
Ai Application	Supports work with Artificial Intelligence software such as cytology, histology, and immunohistochemistry

## M30.5815 Application

**OPTO-EDU**

Converting solid slides into high-resolution digital images can be applied to quality control analysis; cervical cell auxiliary diagnosis; tissue intelligent analysis immunohistochemistry auxiliary interpretation



### Digital Upgrade AI Auxiliary Analysis

Online examination and education system, typical cases and training courses are convenient and fast, breaking the limitations of time and space, realizing online academic exchanges and improving the overall capabilities of hospitals and schools



### Remote Communication and Education

Quick query, progress monitoring, and professional report templates can provide consultation and consulting services for hospitals and medical alliances. Each port has detailed functions, professional management, and information security.



### Remote Consultation

Application software for teaching, retrieval or examination can be developed based on digital slides



### Assisting Research and Teaching Software Development



**Opto-Edu (Beijing) Co., Ltd.**



0086 139111110627



sale@optoedu.com



cnoec.com

F-1501 Wanda Plaza, No. 18 Shijingshan Road, Beijing 100043, China