



## OPTO-EDU A59.2243 8.0M 4K HDMI+USB+WIFI+LAN+SD Digital Microscope Camera

Our Product Introduction

### Basic Information

- Place of Origin: China
- Brand Name: CNOEC, OPTO-EDU
- Certification: CE, Rohs
- Model Number: A59.2243
- Minimum Order Quantity: 1 pc
- Price: FOB \$1~1000, Depend on Order Quantity
- Packaging Details: Carton Packing, For Export Transportation
- Delivery Time: 5~20 Days
- Payment Terms: T/T, West Union, Paypal
- Supply Ability: 5000 pcs/ Month

OPTO-EDU



### Product Specification

- Applications: Microscope
- Certification: CE|Rohs
- Output: HDMI
- Product Name: Microscope Accessories
- Sensor: CMOS
- Compatible: Windows XP/Vista
- Highlight: 4K HDMI Microscope Camera,  
USB Microscope Camera,  
8.0M Microscope Camera

OPTO-EDU



for more products please visit us on [cnoec.com](http://cnoec.com)

OPTO-EDU





### A59.2243 4K HDMI+USB+WIFI+LAN+SD Digital Camera, 8.0M, Mouse Measure

A59.2243 camera is the next-generation live-view imaging-system with 4K resolution(Video) at 30 FPS. It comes with Sony Exmor CMOS sensor with high sensitivity, low dark current and no smear achieved through the adoption of R, G and B primary color mosaic filters.

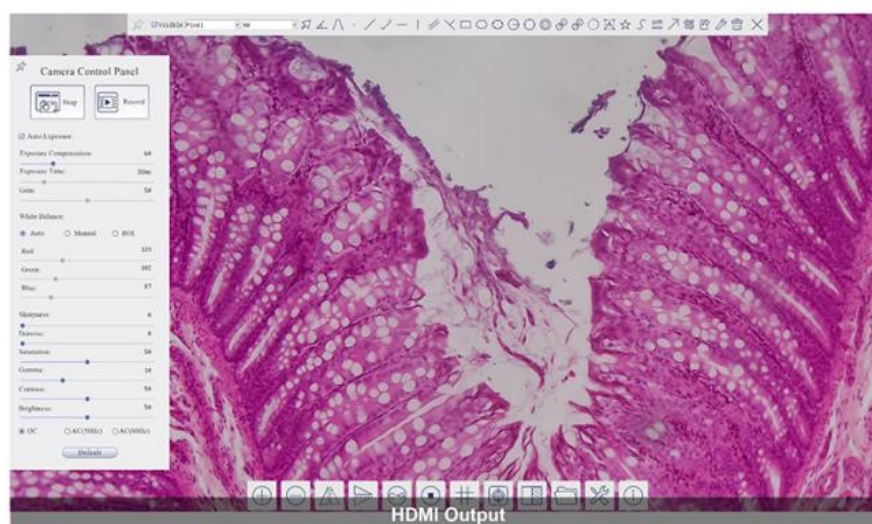
A59.2243 uses a standard C-mount interface for maximum compatibility with various microscopy-systems. It can be used as a stand-alone recorder when used with an HDMI monitor or television, or live-streamed to a PC via NETWORK/USB for image-capture and video-recording.

Hardware 3D denoising, sharpness and tone mapping control functions greatly improve the image and video quality.

The included Windows software offers image-development and measurement tools, as well as advanced compositing features such as image-stitching and extended-depth-of-focus. With the ability to calibrate scales at multiple magnifications, the software can be used for multi-level inspection. For Mac and Linux, there is a lite version of the software which can capture video and still images, and includes limited processing features.

A59.2243 4K series camera is intended to be used for the acquisition of digital images from the stereo microscope, biological microscope or online interactive teaching.

The screenshot displays the Jvarkit software interface. The main window shows a histological image of tissue, likely stained with hematoxylin and eosin (H&E). The image is processed with various settings, including a color map (H&E) and a threshold (0.5). The interface includes a menu bar (File, Edit, View, Browser, Setup, Capture, Image, Process, Layer, Measurements, Options, Window, Help) and a toolbar with icons for various functions. On the left, there is a sidebar with a list of processing steps: Capture, Image, Process, Layer, Measurements, Options, Window, Help. Below this, there are checkboxes for 'Show' and 'Hide' for each step. The main image area shows a histological section with a color map (H&E) and a threshold (0.5). The image is processed with various settings, including a color map (H&E) and a threshold (0.5). At the bottom, there is a status bar with the text 'USB Output' and 'Jvarkit v1.0.0 - 17 April 2015 - 10:00:00'.

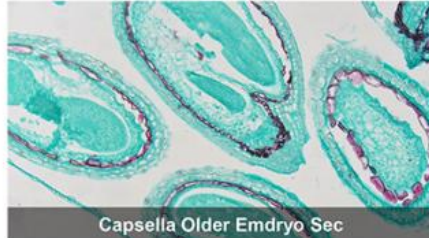




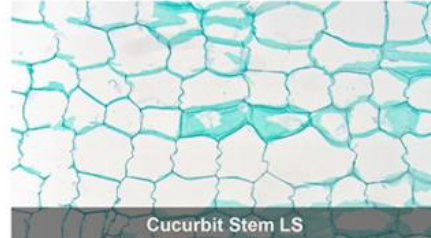
## A59.2243 Features & Sample Pictures



- 4K HDMI+USB+WIFI+LAN+SD Card Digital Camera With Sony Exmor CMOS Sensors Resolution 8.0M
- 4K/1080P Auto Switch According to Display Resolution, Save Image & Record Video to SD Card
- Built-in HDMI Mouse Control Panel For Image & Video Capture, Full Kinds of Measuring Function
- Optional WIFI Adapter On USB Port Enable HDMI/WiFi Output Simultaneously
- Advanced Video & Image Processing Software Image View, Support SDK For Win/Linux/Mac/Android



Capsella Older Emdryo Sec



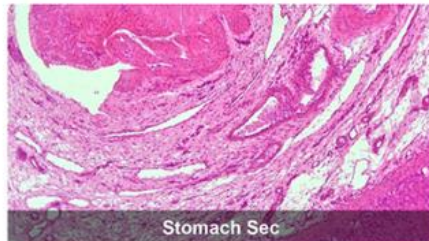
Cucurbit Stem LS



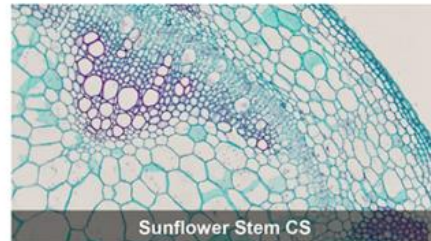
Pear Sec Showing Stone Ceil



Simple Cuboidal Epithelium Sec



Stomach Sec



Sunflower Stem CS

## A59.2243 Specification



Order Code	Sensor & Size(mm)	Pixel(μm)	G Sensitivity Dark Signal	FPS/Resolution	Binning	Exposure(ms)
4K8MPA	Sony IMX334@ 1/1.8" (7.68x4.32)	2.0x2.0	505mv with 1/30s 0.1mv with 1/30s	30@3840*2160 (HDMI) 30@3840*2160 (NETWORK) 30@3840*2160 (USB)	1x1	0.04~1000

4K8MPB	IMX485(C) 1/1.2" (11.14x6.26)	2.9 x 2.9	2188mv with 1/30s 0.39mv with 1/30s	30@3840x2160 (HDMI) 30@3840x2160 (NETWORK) 30@3840x2160 (USB)	1x1	0.04~1000
4K8MPC	Sony IMX678@ 1/1.8" (7.68x4.32)	2.0x2.0	1364mv with 1/30s 0.15mv with 1/30s	30@3840*2160 (HDMI) 30@3840*2160 (NETWORK) 30@3840*2160 (USB)	1x1	0.04~1000
4K8MPD	Sony IMX585(C)1/1.2 "(11.14x6.26)	2.9x2.9	1028mv with 1/30s 0.13mv with 1/30s	30@3840*2160 (HDMI) 30@3840*2160 (NETWORK) 30@3840*2160 (USB)	1x1	0.04~1000

**Remark:** C - Color, M-Monocolor, GS-GS Shutter

INTERFACE & BUTTON FUNCTION	
<b>USB Mouse</b>	Connect USB mouse for easy operation on HDMI menu
<b>USB 2.0</b>	Connect USB flash drive to save pictures and videos
<b>USB Video</b>	Connect 5G WLAN module to transfer video wirelessly in real time
<b>HDMI</b>	Connect PC or other host device to realize video image transmission
<b>LAN</b>	Comply with HDMI2.0 standard. 4K/1080P format video output and supporting auto switching between 4K and 1080P format according to the connected display resolution
<b>SD</b>	Gigabit Ethernet port to connect to the peripheral for the video streaming
<b>ON/OFF</b>	Comply with SDIO3.0 standard and SD card could be inserted for the images or videos storage
<b>LED</b>	Power On/Off Switch
<b>DC12V</b>	Camera status indicator
	Power adapter connection (12V/1A)
VIDEO OUTPUT INTERFACE	
<b>HDMI</b>	Comply with HDMI1.4 standard, 30fps@4K or 30fps@1080P support real time resolution switching(4K/1080P/720P)
<b>LAN</b>	H264 encoded video DHCP configuration or manual configuration Unicast/multicast configuration
<b>WIFI</b>	Connecting 5G WLAN adapter (USB2.0 slot) in AP/STA mode (WIFI Adapter Is Optional)
<b>USB Video</b>	Connecting USB Video port of PC for video transfer, MJPEG format video
GE OUTPUT INTERFACE	
<b>Video Saving</b>	Video format:8M(3840*2160) H264/H265 encoded MP4 file Video saving frame rate:30fps
<b>Image Capture</b>	8M (3840*2160) JPEG/TIFF image in SD card or USB flash drive
<b>Measurement Saving</b>	Measurement information saved in different layer with image content Measurement information is saved together with image content in burn in mode
<b>ISP</b>	Exposure(Automatic, Manual Exposure), Gain, White Balance(Manual, Automatic, ROI Mode), Sharpening, 3D Denoise, Saturation Adjustment, Contrast Adjustment, Brightness Adjustment, Gamma Adjustment, Color to Gray, 50HZ/60HZ Anti-flicker Function
<b>Image Operation</b>	Zoom In/Zoom Out(Up to 10X), Mirror/Flip, Freeze, Cross Line, Compare(Comparison between real time video and images in SD card or USB flash drive ), Embedded Files Browser, Video Playback, Measurement Function
<b>Embedded RTC</b>	To support accurate time on board (Optional)
<b>Restore</b>	Restore camera parameters to its factory status
<b>Multiple Language</b>	English, Simplified Chinese, Traditional Chinese, Korean, Thailand, French, German, Japanese, Italian, Russian
SOFTWARE ENVIRONMENT UNDER LAN/WLAN/USB VIDEO OUTPUT	
<b>White Balance</b>	Auto White Balance
<b>Color Technique</b>	Ultra-Fine Color Engine
<b>Capture/Control SDK</b>	Win/Linux/macOS/Android Multiple Platform SDK(Native C/C++, C#/VB.NET, Python, Java, DirectShow, Twain, etc)
<b>Recording System</b>	Still Picture or Movie Microsoft® Windows® XP, Vista, 7, 8, 8.1 /10 /11(32 & 64 bit)
<b>Operating System</b>	OSx(Mac OS X) Linux CPU: Equal to Intel Core2 2.8GHz or Higher Memory: 4GB or More
<b>PC Requirements</b>	Display:19" or Larger CD-ROM

OPERATING ENVIRONMENT	
Operating Temperature	-10 °C~ 50 °C
Storage Temperature	-20 °C~ 60 °C
Operating Humidity	30~80%RH
Storage Humidity	10~60%RH
Power Supply	DC 12V/2A Adaptor
Dimension of A59.2243 Series Camera	
A59.2243 Camera body, made from tough, CNC aluminium alloy, ensures a heavy duty, workhorse solution. The camera is designed with a high quality IR-CUT to protect the camera sensor. No moving parts included. This design ensures a rugged, robust solution with an increased lifespan when compared to other industrial camera solutions.	



## A59.2243 Packing List



Packing List of A59.2243 Series Camera				
Standard Outfit				
A	Gift box : L:25.5cm W:17.0cm H:9.0cm (1pcs, 1.57Kg/ box)			
B	Digital camera			
	Power Adaptor: Input: AC 100~240V 50Hz/60Hz, Output: DC 12V 1A			
	American standard: Model: GS12U12-P1I 12W/12V/1A: UL/CUL/BSMI/CB/FCC			
	EMI Standard:EN55022,EN61204-3, EN61000-3-2,-3, FCC Part 152 class B, BSMI CNS14338			
C	EMS Standard:EN61000-4-2,3,4,5,6,8,11,EN61204-3,Class A Light Industry Standard			
	European standard: Model:GS12E12-P1I 12W/12V/1A TUV(GS)/CB/CE/ROHS			
	EMI Standard:EN55022,EN61204-3, EN61000-3-2,-3, FCC Part 152 class B, BSMI CNS14338			
	EMS Standard:EN61000-4-2,3,4,5,6,8,11,EN61204-3,Class A Light Industry Standard			
D	USB Mouse			
E	HDMI Cable			
F	USB2.0 A male to A male gold-plated connectors cable /2.0m			
G	CD (Driver & utilities software, Ø12cm)			
Optional Accessory				
H	SD Card(16G or above; Speed: class 10)			
I	Focus Adjustable	For	0.37x, C-Mount to Dia.23.2mm	A55.2202-A37
		Microscope	0.50x, C-Mount to Dia.23.2mm	A55.2202-A50
			0.75x, C-Mount to Dia.23.2mm	A55.2202-A75
	Eyepiece Adapter	For	0.37x, C-Mount to Dia.31.75mm	A55.2204-A37
		Telescope	0.50x, C-Mount to Dia.31.75mm	A55.2204-A50
			0.75x, C-Mount to Dia.31.75mm	A55.2204-A75
J	Focus Fixed	For	0.37x, C-Mount to Dia.23.2mm	A55.2202-F37
		Microscope	0.50x, C-Mount to Dia.23.2mm	A55.2202-F50
			0.75x, C-Mount to Dia.23.2mm	A55.2202-F75
	Eyepiece Adapter	For	0.37x, C-Mount to Dia.31.75mm	A55.2204-F37
		Telescope	0.50x, C-Mount to Dia.31.75mm	A55.2204-F50
			0.75x, C-Mount to Dia.31.75mm	A55.2204-F75
K	Adaptor Rings Dia.23.2mm to 30.0mm For 30.0mm Microscope Eyepiece Tube			A55.2203-30
L	Adaptor Rings Dia.23.2mm to 30.5mm For 30.5mm Microscope Eyepiece Tube			A55.2203-30.5
M	Calibration	X=0.01mm/100Div.		
		X,Y=0.01mm/100Div		

	Stage Micrometer	X=0.01mm/100Div., 0.10mm/100Div
N	USB Disk	
O	USB WIFI Adapter	
P	Ethernet Cable	

## Camera Connect To Microscope



A55.2002  
C-Mount to 23.2mm Adapter  
For Microscope

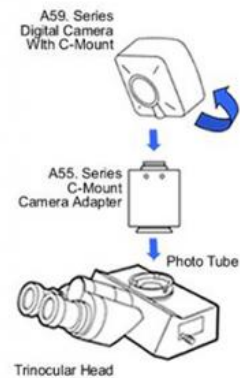


A55.2004  
C-Mount to 31.75mm Adapter  
For Telescope

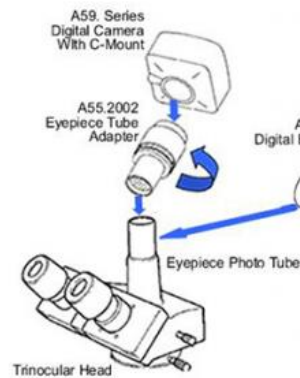
## OPTO-EDU

## How Camera Connect To Microscope

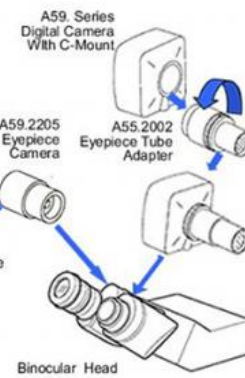
### 1. To Trinocular Microscope On Straight Photo Tube



### 2. To Trinocular Microscope On Eyepiece Photo Tube



### 3. To Binocular Microscope On Eyepiece Tube



Opto-Edu (Beijing) Co., Ltd.

☎ 0086 13911110627

✉ sale@optoedu.com

🌐 cnoec.com

F-1501 Wanda Plaza, No. 18 Shijingshan Road, Beijing 100043, China