



OPTO-EDU A59.2250 WIFI 1080P Digital Microscope Camera

Our Product Introduction

for more products please visit us on cnoec.com

Basic Information

- Place of Origin: China
- Brand Name: CNOEC, OPTO-EDU
- Certification: CE, Rohs
- Model Number: A59.2250
- Minimum Order Quantity: 1 pc
- Price: FOB \$1~1000, Depend on Order Quantity
- Packaging Details: Carton Packing, For Export Transportation
- Delivery Time: 5~20 Days
- Payment Terms: T/T, West Union, Paypal
- Supply Ability: 5000 pcs/ Month

OPTO-EDU



Product Specification

- Applications: Microscope
- Certification: CE|Rohs
- Output: WIFI
- SD: SD Card Slot
- LED: Power On Indicator
- ON/OFF: Power On/Off Switch
- Highlight: **1080P Digital Microscope Camera,
WIFI Digital Microscope Camera,
OPTO-EDU Digital Microscope Camera**

Product Description



OPTO-EDU (BEIJING) CO., LTD.

OPTO-EDU

F-1501 Wanda Plaza, No.18 Shijingshan Road, Beijing 100043, China
Tel: +8610 88696020 Fax: +8610 88696085

A59.2250

WIFI 1080P Digital Camera



A59.2250 Features

OPTO-EDU

**A59.2250****A Camera that has the WiFi output and Ethernet output**

When WiFi output is available, this Camera is used as a WiFi Camera and could be connected to mobile devices, such as smart phones, pads and computers. It could work with ToupView app on iOS, Android and windows platform. More than 6 users could connect the Camera simultaneously by WiFi connection.

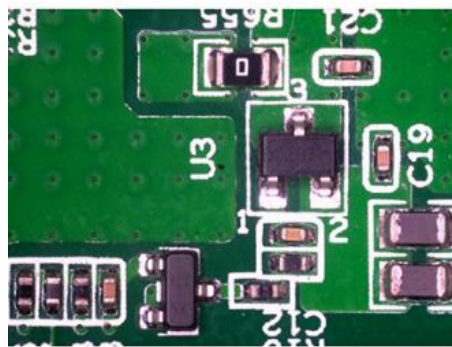
When Ethernet output is available, this Camera is used as a Ethernet camera. The Camera could be used with ToupView or other 3rd part software which could support Ethernet camera.

- ◆ Sony Exmor back illuminated CMOS sensor
- ◆ Powerful ISP functions
- ◆ iOS/Android app for smart phones or tablets

- ◆ LAN, WLAN(AP/STA mode) multiple video outputs
- ◆ ToupView/ToupLite software for PC

Order Code	Sensor & Size(mm)	Pixel(μm)	G Sensitivity	Dark Signal	FPS/Resolution	Binning	Exposure (ms)
------------	-------------------	-----------	---------------	-------------	----------------	---------	---------------

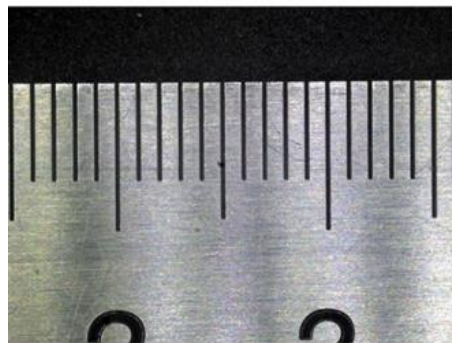
5MPA	5M/Sony IMX178© 1/1.8"(6.22x4.67)	2.4x2.4	425mv with 1/30s 0.15mv with 1/30s	30@2592*1944	1x1	0.03ms~918ms
------	--------------------------------------	---------	---------------------------------------	--------------	-----	--------------



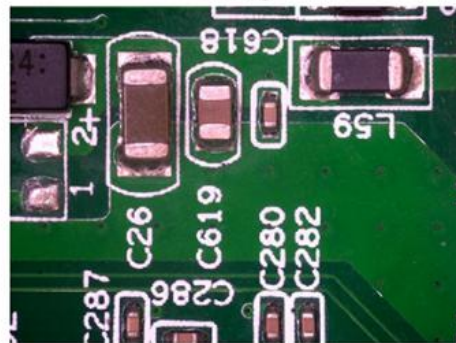
PCB 1



Printing



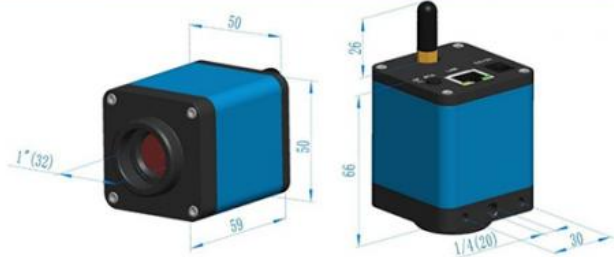
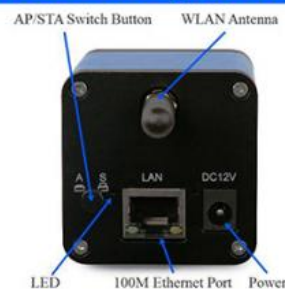
Steel Ruler



PCB 2

A59.2250 Specification

OPTO-EDU



Interface	Function Description
WiFi Antenna	Antenna for the WiFi signal
LED	LED status indicator When the power adapter is inserted into the power slot, the LED light will be on and the starting process will last about 8 seconds; WiFi AP mode: the LED flashes fast; WiFi STA mode: the LED flashes slowly; LAN mode: the Ethernet indicator and the LED light will be on;
DC12V	Power jack (12V/1A).
AP/STA Switch Button	Press to switch between AP and STA mode;
LAN	100M Ethernet port to connect to the router or computer to transfer video. Video can be transmitted via LAN or WiFi. LAN and WiFi cannot be used at the same time. The priority of LAN connection is higher than WiFi;
Video Output Interface	Function Description
LAN Interface	30fps@2592*1944 H264 encoded video and Jpeg image capture
WiFi Interface	Support 802.11ac protocols in AP/STA mode; 30fps@2592*1944 H264 encoded video and Jpeg image capture
Other Function	Function Description
Software Environment under LAN/WiFi/Output	
White Balance	Auto White Balance
Color Technique	Ultra-Fine Color Engine
ISP	Exposure(Automatic/Manual Exposure)/ Gain, White Balance(Manual / One Push), Sharpening,3D Denoise, Saturation Adjustment, Contrast Adjustment, Brightness Adjustment, Gamma Adjustment,50HZ/60HZ Anti-flicker, Mirror/Flip, Network Bandwidth Adjustment
Capture/Control SDK	Windows/Linux/macOS/Android Multiple Platform SDK(Native C/C++, C#/VB.NET, Python, Java, DirectShow, Twain, etc)
Recording System	Still Picture or Movie

Operating System	Microsoft® Windows® XP / Vista / 7 / 8 / 8.1 /10(32 & 64 bit) OSx(Mac OS X) Linux
PC Requirements	CPU: Equal to Intel Core2 2.8GHz or Higher Memory: 4GB or More Ethernet: RJ45 Interface, 100M bps or more WiFi Adaptor: Support 802.11 b/g/n/ac Display:19" or Larger CD-ROM
Operating Environment	
Operating Temperature (in Centidegree)	-10°~ 50°
Storage Temperature (in Centidegree)	-20°~ 60°
Operating Humidity	30~80%RH
Storage Humidity	10~60%RH
Power Supply	DC 12V/1A Adapter

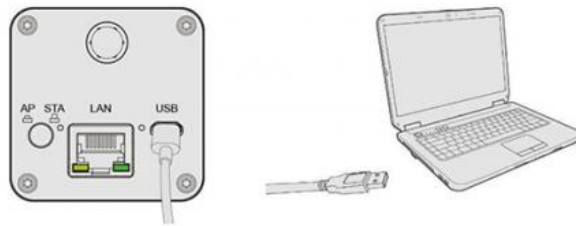
A59.2250 Packing List

OPTO-EDU



Standard Packing List			
A	Gift box : L:15cm W:15cm H:10cm (1pcs, 0.46kg/ box)		
B	One WECAM series camera		
C	Power Adapter: Input: AC 100~240V 50Hz/60Hz, Output: DC 12V 1A American standard: Model: GS12U12-P1I 12W/12V/1A: UL/CUL/BSMI/CB/FCC European standard: Model:GS12E12-P1I 12W/12V/1A; TUV(GS)/CB/CE/ROHS EMI Standard:EN55022,EN61204-3, EN61000-3-2,-3, FCC Part 152 class B, BSMI CNS14338 EMS Standard:EN61000-4-2,3,4,5,6,8,11,EN61204-3,Class A Light Industry Standard		
D	CD (Driver & utilities software, Ø12cm)		
Optional Accessory			
E	Ethernet cable		
F	Adjustable lens adapter	C-Mount to Dia.23.2mm eyepiece tube (Please choose 1 of them for your microscope)	108001/AMA037 108002/AMA050 108003/AMA075
G	Fixed lens adapter	C-Mount to Dia.23.2mm eyepiece tube (Please choose 1 of them for your microscope)	108005/FMA037 108006/FMA050 108007/FMA075
Note: For F and G optional items, please specify your Camera type(C-mount, microscope camera or telescope camera), ToupTek engineer will help you to determine the right microscope or telescope camera adapter for your application;			
H	108015(Dia.23.2mm to 30.0mm ring)/Adapter rings for 30mm eyepiece tube		
I	108016(Dia.23.2mm to 30.5mm ring)/ Adapter rings for 30.5mm eyepiece tube		
J	Calibration kit	106011/TS-M1(X=0.01mm/100Div.); 106012/TS-M2(X,Y=0.01mm/100Div.); 106013/TS-M7(X=0.01mm/100Div., 0.10mm/100Div.)	

1. A59.2250 series camera is used by connecting it to a computer via a Micro USB cable



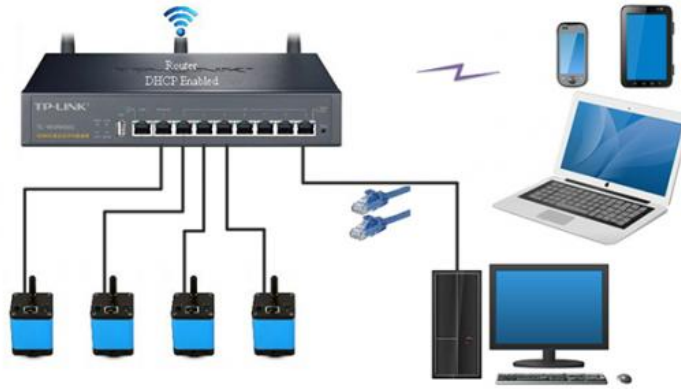
2. A59.2250 Camera working in WiFi AP mode



3. Connecting multi-cameras to the router with WiFi STA mode for the network application



4. Connecting multi-cameras to the router through the LAN port for the network application



5. Connecting multi-cameras to the router through the LAN port/WiFi STA mode for the network application



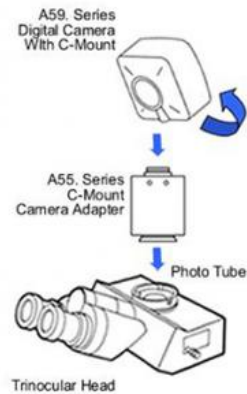
Camera Connect To Microscope



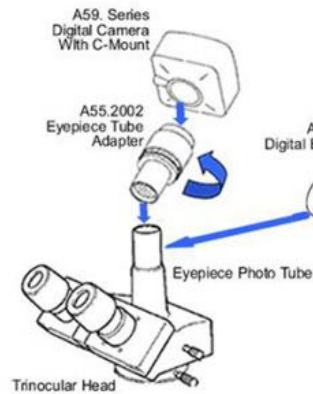
OPTO-EDU

How Camera Connect To Microscope

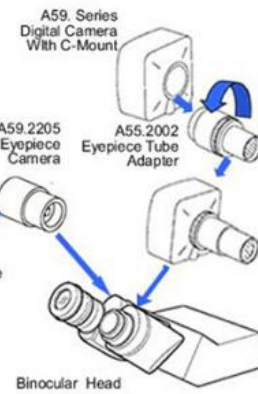
1. To Trinocular Microscope On Straight Photo Tube



2. To Trinocular Microscope On Eyepiece Photo Tube



3. To Binocular Microscope On Eyepiece Tube



Opto-Edu (Beijing) Co., Ltd.

☎ 0086 13911110627

✉ sale@optoedu.com

🌐 cnoec.com

F-1501 Wanda Plaza, No. 18 Shijingshan Road, Beijing 100043, China