



A59.2240 Auto Focus HDMI+WIFI+SD Camera Mouse Measure OPTO-EDU

Our Product Introduction

for more products please visit us on cnoec.com

Basic Information

- Place of Origin: China
- Brand Name: CNOEC, OPTO-EDU
- Certification: CE, Rohs
- Model Number: A59.2240
- Minimum Order Quantity: 1 pc
- Price: FOB \$1~1000, Depend on Order Quantity
- Packaging Details: Carton Packing, For Export Transportation
- Delivery Time: 5~20 Days
- Payment Terms: T/T, West Union, Paypal
- Supply Ability: 5000 pcs/ Month

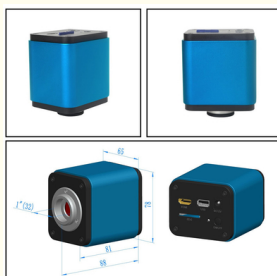


Product Specification

- Applications: Microscope
- Certification: CE|Rohs
- Output: HDMI
- Product Name: Microscope Accessories
- Sensor: CMOS
- Compatible: Windows XP/Vista
- Highlight: **Mouse Measure HDMI+WIFI+SD Camera, OPTO-EDU HDMI+WIFI+SD Camera, A59.2240 HDMI+WIFI+SD Camera**



More Images



Product Description

A59.2240 Auto Focus HDMI+WIFI+SD Camera, Mouse Measure

Auto Focus HDMI+WIFI+SD Card Digital Camera With Sony CMOS Sensors Resloution 1080p/5.0M
Auto/Manual Focus With The Movement of The Sensor, Record 1080p Video ASF Format to SD Card
HDMI/WiFi Output Simultaneously, With Built-in Mouse Control Panel For HDMI, Image View For WIFI
Ultra-Fine TM Color Engine With Perfect Color Reproduction Capability (WIFI)
Advanced Video & Image Processing Software Image View, Support SDK For Win/Linux/Mac/Android

OPTO-EDU



A59.2240 Auto Focus HDMI+WIFI+SD Camera, Mouse Measure

A59.2240 is a multiple interfaces HDMI+WiFi+SD CMOS camera with autofocus function and it adopts ultra-high performance Sony CMOS sensor as the image-picking device. HDMI+WiFi are used as the data transfer interface to HDMI display or computer.

For HDMI output, the built-in software will be loaded and a camera control panel and toolbar are overlaid on the HDMI screen, in this case, the USB mouse can be used to set the camera, browse and compare the captured image, play the video etc.

In HDMI output, the camera embedded Auto/Manual focus function can obtain the clear image at ease. No hand rotation of the microscope Coarse/Fine knob is needed.

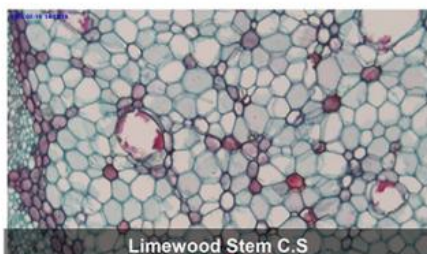
For WiFi output, unplug the mouse and plug in the USB WiFi adapter, connect the computer WiFi to the camera, then the video stream can be transfer to computer with the advanced software ToupView. With ToupView, you can control the camera, process the image as other USB series camera.



A59.2240 Features & Sample Pictures



- Auto Focus HDMI+WiFi+SD Card Digital Camera With Sony CMOS Sensors Resolution 1080p/5.0M
- Auto/Manual Focus With The Movement of The Sensor, Record 1080p Video ASF Format to SD Card
- HDMI/WiFi Output Simultaneously, With Built-in Mouse Control Panel For HDMI, Image View For WIFI
- Ultra-Fine TM Color Engine With Perfect Color Reproduction Capability (WiFi)
- Advanced Video & Image Processing Software Image View, Support SDK For Win/Linux/Mac/Android



Limewood Stem C.S



Pine Leaf C.S



Skin of Frog Sec.



Large Intestine Sec

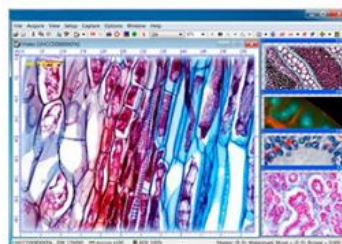


Human Blood Smear



Privet Leaf C.S

A59.2240 Specification

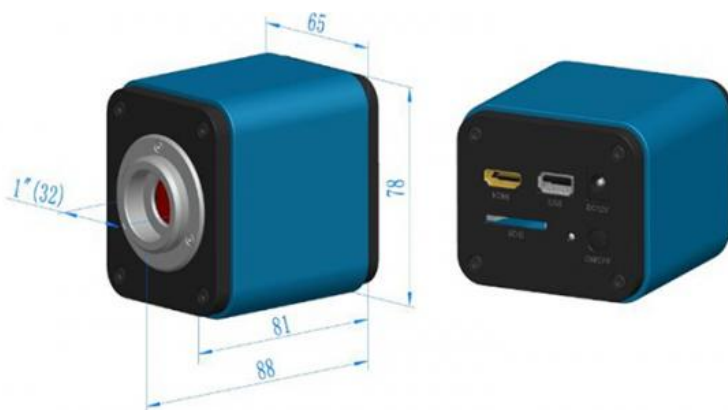


Cata. No.	Sensor & Size(mm)	Pixel(μm)	G Sensitivity Dark Signal	FPS/Resolution	Binning	Exposure
5MPB	1080P/5M/ Sony IMX178(C) 1/1.8"(6.22x4.67)	2.4x2.4	425 mv with 1/30s 0.15 mv with 1/30s	30@1920x1080 (HDMI) 25@1920x1080 (WiFi)	1x1	0.03ms~918ms
2MPD	1080P/2M/ Sony IMX185(C) 1/1.9"(7.20x4.05)	3.75x3.75	1120 mv with 1/30s 0.15 mv with 1/30s	30@1920x1080 (HDMI) 25@1920x1080 (WiFi)	1x1	0.06ms~918ms
2ME (Stop)	1080P/2M/ Sony IMX249(C,GS) 1/1.2"(11.25x6.33)	5.86x5.86	1016 mv with 1/30s 0.15 mv with 1/30s	30@1920x1080 (HDMI) 25@1920x1080 (WiFi)	1x1	0.043ms~1000ms

Remark: C - Color, M-Monocolor, GS-GS Shutter

INTERFACE & BUTTON FUNCTION

USB	USB Mouse, or USB WIFI
HDMI	HDMI Output, Mouse Control & Measure Function
DC12V	12V Power in
SD	SD Card Slot
ON/OFF	Power On/Off Switch
LED	Power On Indicator
HDMI OUTPUT	
UI Operation	With USB Mouse
Image Capture	JPEG Format with 5M Resolution (2592*1944) in SD Card(8G) (5MP)
	JPEG Format with 2M Resolution in SD Card (2MP, 2ME) Global Shutter for 2ME
Video Record	ASF Format 1080P 30fps in SD Card
Camera Control Panel	Including Exposure, Gain, White Balance, Color Adjustment, Sharpness and Denoising Control
Auto-focus Control Panel	Including Auto-focus, Manual Focus, One Push AF and Conjugate Correction Functions
Toolbar	Including Zoom, Mirror, Comparison, Freeze, Cross, Browser Function
WIFI OUTPUT	
UI Operation	Image View on Windows/Linux/OSX/Android Platform
WiFi Performance	802.11n 150Mbps; RF Power 20dBm(Maximum)
Maximum Connected Devices	3~6(According to the Environment and Connection Distance)
White Balance	Auto White Balance
Color Technique	Ultra-Fine Color Engine (WiFi)
Capture/Control SDK	Windows/Linux/macOS/Android Multiple Platform SDK(Native C/C++, C#/VB.NET, Python, Java, DirectShow, Twain, etc) (WiFi)
Recording System	Still Picture or Movie (WiFi)
SOFTWARE ENVIRONMENT FOR USB2.0	
Operating System	Support Microsoft Windows XP / Vista / 7 / 8 / 10(32 & 64 bit)
	OS X (Mac OS X), Linux
PC Requirements	CPU: Equal to Intel Core2 2.8GHz or Higher
	Memory: 2GB or More
	USB port: USB2.0 High-speed Port
	Display: 17" or Larger CD-ROM
OPERATING ENVIRONMENT	
Operating Temperature	-10 °C~ 50 °C
Storage Temperature	-20 °C~ 60 °C
Operating Humidity	30~80%RH
Storage Humidity	10~60%RH
Power Supply	DC 12V/2A Adaptor
Dimension of A59.2240 Series Camera	
A59.2240 Auto-focus HDMI WiFi CMOS camera body, made from tough, aluminium alloy, ensures a heavy duty, workhorse solution. The camera is designed with a high quality IR-CUT to protect the camera sensor. No moving parts included. These measures ensure a rugged, robust solution with an increased lifespan when compared to other industrial camera solutions	
Dimension	78 mm (3.07") x 70 mm (2.76") x 92mm (3.62")
Shipping Weight	0.47 kg (1.0lbs)



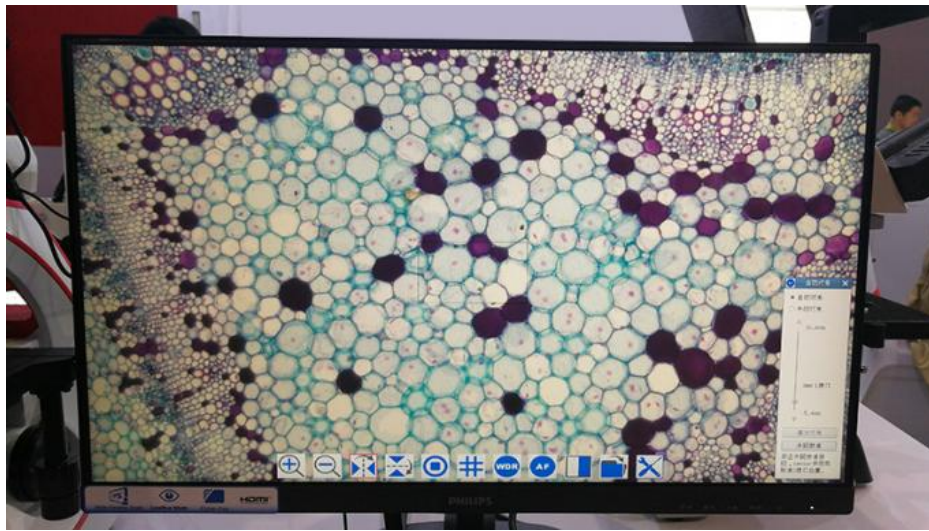
A59.2240 Packing List



Packing List of A59.2240 Series Camera			
Standard Outfit			
A	Gift box : L:25.5cm W:17.0cm H:19.0cm (1pcs, 1.55Kg/ box)		
B	Digital camera		
C	Power Adaptor: Input: AC 100~240V 50Hz/60Hz, Output: DC 12V 1A American standard: Model: GS12U12-P11 12W/12V/1A: UL/CUL/BSMI/CB/FCC EMI Standard:EN55022,EN61204-3, EN61000-3-2,-3, FCC Part 152 class B, BSMI CNS14338 EMS Standard: EN61000-4-2,3,4,5,6,8,11,EN61204-3,Class A Light Industry Standard European standard: Model:GS12E12-P11 12W/12V/1A TUV(GS)/CB/CE/ROHS EMI Standard:EN55022,EN61204-3, EN61000-3-2,-3, FCC Part 152 class B, BSMI CNS14338 EMS Standard: EN61000-4-2,3,4,5,6,8,11,EN61204-3,Class A Light Industry Standard		
D	HDMI Cable		
E	USB Mouse		
F	Wireless network adapter with USB interface		
G	CD (Driver & utilities software, Ø12cm)		
Optional Accessory			
H	Focus Adjustable Eyepiece Adapter	For 0.37x, C-Mount to Dia.23.2mm	A55.2202-A37
		Microscope 0.50x, C-Mount to Dia.23.2mm	A55.2202-A50
		0.75x, C-Mount to Dia.23.2mm	A55.2202-A75
		For 0.37x, C-Mount to Dia.31.75mm	A55.2204-A37
		Telescope 0.50x, C-Mount to Dia.31.75mm	A55.2204-A50
		0.75x, C-Mount to Dia.31.75mm	A55.2204-A75
I	Focus Fixed Eyepiece Adapter	For 0.37x, C-Mount to Dia.23.2mm	A55.2202-F37
		Microscope 0.50x, C-Mount to Dia.23.2mm	A55.2202-F50
		0.75x, C-Mount to Dia.23.2mm	A55.2202-F75
		For 0.37x, C-Mount to Dia.31.75mm	A55.2204-F37
		Telescope 0.50x, C-Mount to Dia.31.75mm	A55.2204-F50
		0.75x, C-Mount to Dia.31.75mm	A55.2204-F75
J	Adaptor Rings Dia.23.2mm to 30.0mm For 30.0mm Microscope Eyepiece Tube		A55.2203-30
K	Adaptor Rings Dia.23.2mm to 30.5mm For 30.5mm Microscope Eyepiece Tube		A55.2203-30.5
L	Calibration Stage Micrometer	X=0.01mm/100Div.	
		X,Y=0.01mm/100Div	
		X=0.01mm/100Div., 0.10mm/100Div	
M	SD Card(4G or 8G)		

More Pictures

OPTO-EDU



Opto-Edu (Beijing) Co., Ltd.

☎ 0086 13911110627

✉ sale@optoedu.com

🌐 cnoec.com

F-1501 Wanda Plaza, No. 18 Shijingshan Road, Beijing 100043, China