



A59.2239 Auto Focus 4K HDMI+WIFI+USB Camera Mouse Measure OPTO-EDU

Our Product Introduction

Basic Information

- Place of Origin: China
- Brand Name: CNOEC, OPTO-EDU
- Certification: CE, Rohs
- Model Number: A59.2239
- Minimum Order Quantity: 1 pc
- Price: FOB \$1~1000, Depend on Order Quantity
- Packaging Details: Carton Packing, For Export Transportation
- Delivery Time: 5~20 Days
- Payment Terms: T/T, West Union, Paypal
- Supply Ability: 5000 pcs/ Month

OPTO-EDU



Product Specification

- Applications: Microscope
- Certification: CE|Rohs
- Output: HDMI
- Product Name: Microscope Accessories
- Sensor: CMOS
- Compatible: Windows XP/Vista
- Highlight: **Auto Focus OPTO EDU Camera,
4K HDMI WIFI USB Camera,
Mouse Measure OPTO EDU Camera**

OPTO-EDU



Product Description

Auto Focus 4K HDMI+WIFI+USB Camera, Mouse Measure

Auto Focus 4K HDMI+WIFI+USB+SD Card Digital Camera With Sony Exmor/STARVIS CMOS Sensors 8.0M

4K/1080P Auto Switch According to Display Resolution, Save Image & Record Video to SD Card

Built-in HDMI Mouse Control Panel For Image & Video Capture, Full Kinds of Measuring Function

Optional WIFI Adapter On USB Port Enable HDMI/WiFi Output Simultaneously

Advanced Video & Image Processing Software Image View, Support SDK For Win/Linux/Mac/Android

OPTO-EDU





A59.2239 Auto Focus 4K HDMI+WIFI+USB Camera, Mouse Measure

A59.2239 is a camera designed that includes multiple modes of output (HDMI/WLAN/USB), It uses ultra-high-performance CMOS sensor. The camera can be directly connected to an HDMI display, or it can be connected to a computer via WiFi or USB, and the image and video can be saved in an SD card /USB flash drive for on-site analysis and subsequent research.

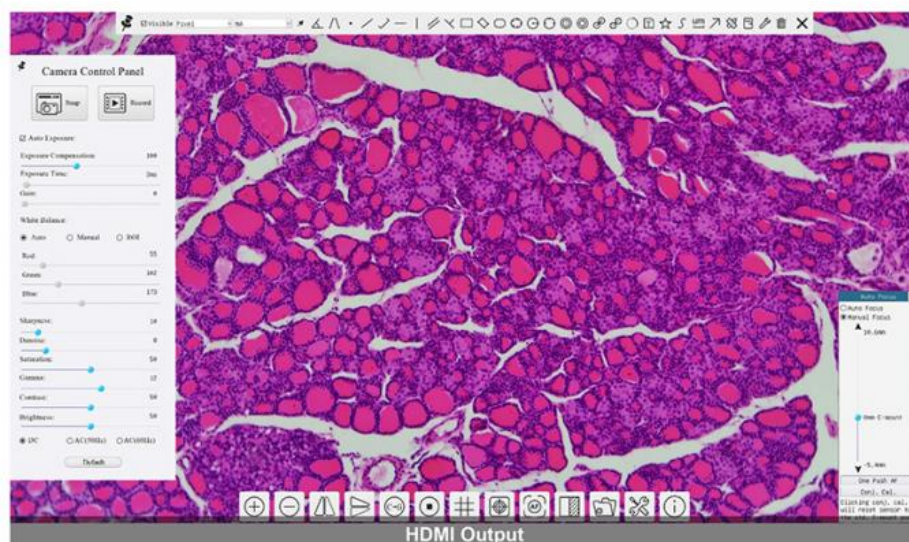
Enhanced with an embedded ARM core, this camera integrates various functions inside. With the help of a USB mouse and well-designed UI on the HDMI monitor, all functions could be easily controlled.

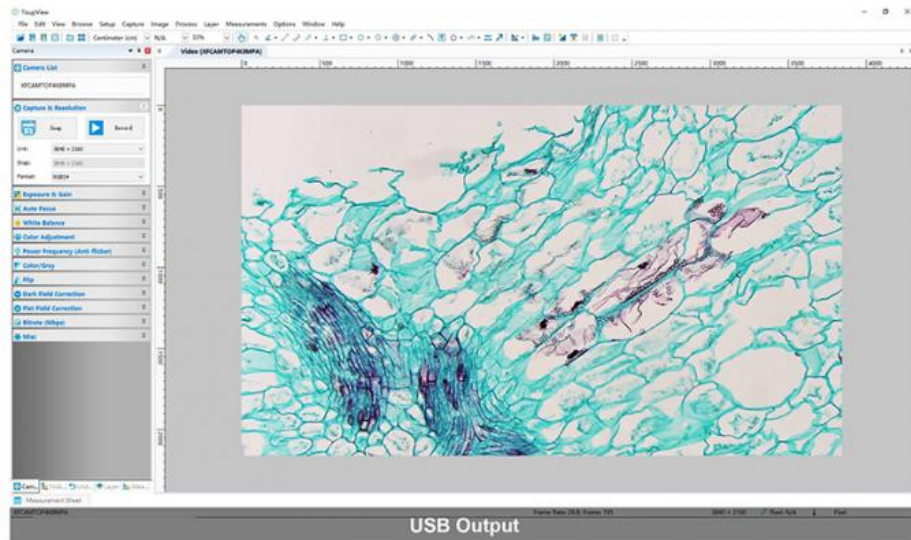
A59.2239 camera comes with the built-in Auto Focus system, which can realize Auto Focus on specific areas of the sample.

By inserting a WLAN module or connecting to a computer via a USB cable, the user can directly control the camera's hardware with the software Image View. A59.2239 camera can be used for tool field inspection, microscope observation, etc.

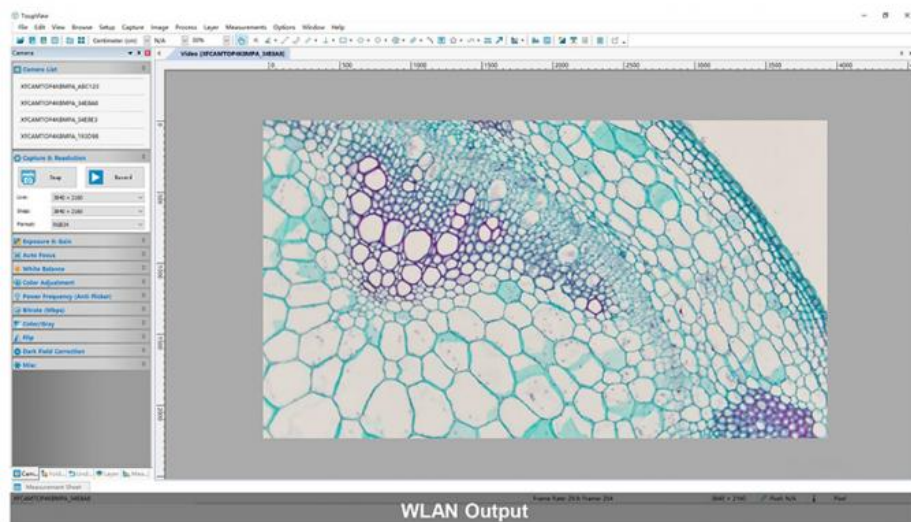
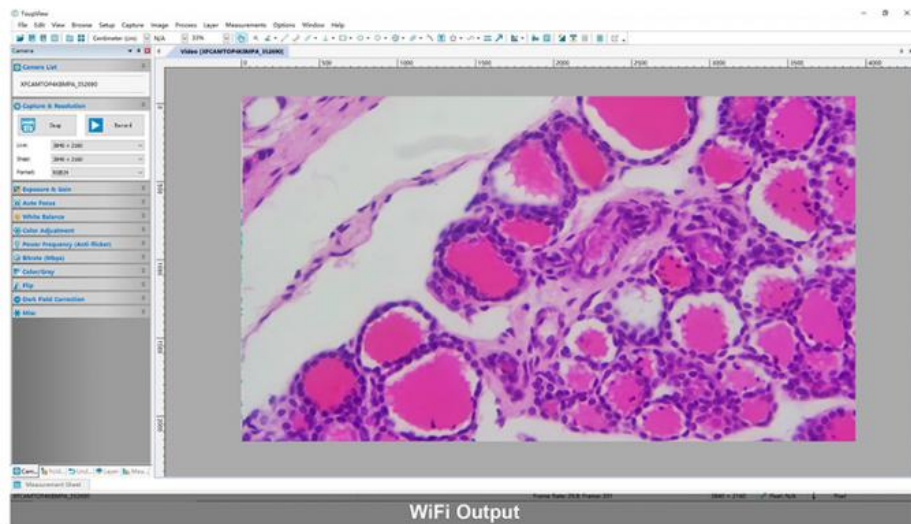
A59.2239 camera is intended to be used for the acquisition of digital images from the stereo microscope, biological microscope or online interactive teaching.

A59.2239 Connections Image





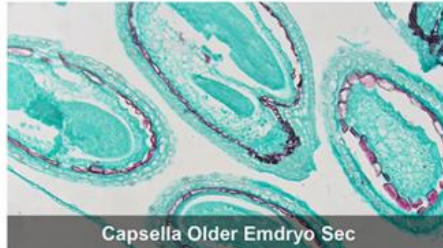
A59.2239 Connections Image



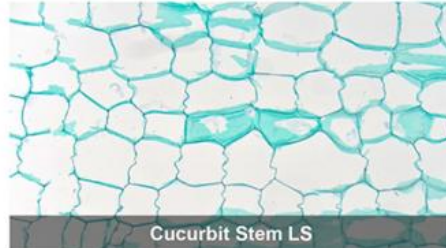
A59.2239 Features & Sample Pictures



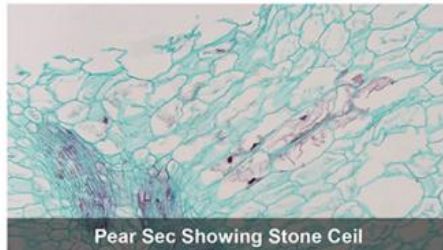
- Auto Focus 4K HDMI+WIFI+USB+SD Card Digital Camera With Sony Exmor/STARVIS CMOS Sensors 8.0M
- 4K/1080P Auto Switch According to Display Resolution, Save Image & Record Video to SD Card
- Built-in HDMI Mouse Control Panel For Image & Video Capture, Full Kinds of Measuring Function
- Optional WIFI Adapter On USB Port Enable HDMI/WiFi Output Simultaneously
- Advanced Video & Image Processing Software Image View, Support SDK For Win/Linux/Mac/Android



Capsella Older Emdryo Sec



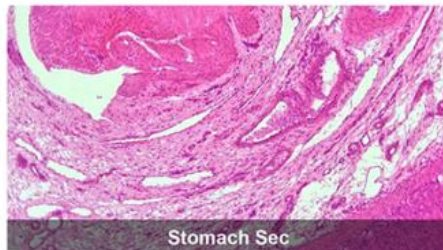
Cucurbit Stem LS



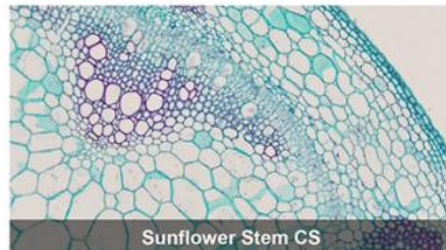
Pear Sec Showing Stone Ceil



Simple Cuboidal Epithelium Sec

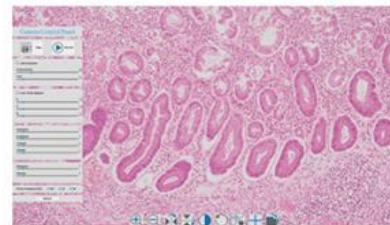


Stomach Sec



Sunflower Stem CS

A59.2239 Specification



A59.2239 Auto Focus 4K HDMI+WIFI+USB+SD Camera, Mouse Measure

Cata. No.	Sensor & Size(mm)	Pixel(μm)	G Sensitivity Dark Signal	FPS/Resolution	Binning	Exposure
8MPA	4K/Sony IMX334@1/1.8" (7.68x4.32)	2.0x2.0	505 mv with 1/30s 0.13 mv with 1/30s	30@3840x2160(HDMI) 30@3840x2160(WLAN) 30@3840x2160(USB)	1x1	0.04ms~1000ms

Remark: C - Color, M-Monocolor, GS-GS Shutter

INTERFACE & BUTTON FUNCTION

USB Mouse	Connect USB mouse for easy operation with embedded Image View software
USB2.0	Connect USB flash drive to save pictures and videos
	Connect 5G WLAN module to transfer video wirelessly in real time
USB Video	Connect PC or other host device to realize video image transmission

HDMI	Comply with HDMI1.4 standard. 4K/1080P format video output and supporting automatic switch between 4K and 1080P format according to the connected monitors
ON/OFF	Power switch
SD	Comply with SDIO3.0 standard and SD card could be inserted for video and images saving
LED	LED status indicator
DC12V	Power adapter connection (12V/1A)
VIDEO OUTPUT INTERFACE FUNCTION DESCRIPTION	
HDMI	Comply with HDMI1.4 standard 30fps@4K or 30fps@1080P
WIFI	Connecting 5G WLAN adapter (USB2.0 slot) in AP/STA mode (WIFI Adapter Is Optional)
USB	Connecting USB Video port of PC for video transfer MJPEG format video
FUNCTION DESCRIPTION	
Video Saving	Video format:8M(3840*2160) H264/H265 encoded MP4 file Video saving frame rate:30fps in SD card or USB flash drive
Image Capture	8M (3840*2160) JPEG/TIFF image in SD card or USB flash drive
Measurement Saving	Measurement information saved in different layer with image content Measurement information is saved together with image content in burn in mode
ISP	Exposure(Automatic, Manual Exposure), Gain, White Balance(Manual, Automatic, ROI Mode),Sharpening,3D Denoise, Saturation Adjustment, Contrast Adjustment, Brightness Adjustment, Gamma Adjustment, Color to Gray, 50HZ/60HZ Anti-flicker Function
Video/Image Operation	Zoom In/Zoom Out(Up to 10X), Mirror/Flip, Color/Gray, Freeze, Cross Line, Overlay , Auto Focus, Compare(Comparison between real time video and images in SD card/ USB flash drive), Embedded Files Browser, Video Playback, Measurement Function
Embedded RTC	To support accurate time on board (Optional)
Restore	Restore camera parameters to its factory status
Multiple Language	English, Simplified Chinese, Traditional Chinese, Korean, Thailand, French, German, Japanese, Italian, Russian
Recording System	Still Picture or Movie (WiFi)
SOFTWARE ENVIRONMENT FOR LAN/WLAN/USB VIDEO OUTPUT	
White Balance	Auto White Balance
Color Technique	Ultra-Fine Color Engine
Capture/Control SDK	Windows/Linux/macOS/Android Multiple Platform SDK(Native C/C++, C#/VB.NET, Python, Java, DirectShow, Twain, etc)
Recording System	Still Picture or Movie
Operating System	Support Microsoft Windows XP / Vista / 7 / 8 / 10(32 & 64 bit) OS X (Mac OS X), Linux
PC Requirements	CPU: Equal to Intel Core2 2.8GHz or Higher Memory: 2GB or More USB port: USB2.0 High-speed Port Display: 17" or Larger CD-ROM
OPERATING ENVIRONMENT	
Operating Temperature	-10 °C~ 50 °C
Storage Temperature	-20 °C~ 60 °C
Operating Humidity	30~80%RH
Storage Humidity	10~60%RH
Power Supply	DC 12V/2A Adaptor
Dimension of A59.2239 Series Camera	
A59.2239 Auto-focus HDMI WiFi CMOS camera body, made from tough, CNC aluminium alloy, ensures a heavy duty, workhorse solution. The camera is designed with a high quality IR-CUT to protect the camera sensor. No moving parts included. This design ensures a rugged, robust solution with an increased lifespan when compared to other industrial camera solutions.	



How To Choose C-Mount According to Digital Camera Sensor Size			
To choose camera adapter (C-Mount) or eyepiece adapter correctly, please refer to the quick table "Digital Camera Sensor Size & C-Mount". Choose the adapter's (C-Mount) magnification according to your camera's sensor size, you can get the best view field under camera watching.	Digital Camera Sensor Size & C-Mout		
	Sensor	Diagonal Sise	C Mount Compitable
	1"	16mm	1.0x
	2/3"	10.6mm	0.75x/0.63x
	1/1.8"	8.8mm	0.5x/0.55x
	1/2"	8mm	0.5x
	1/2.5"	6.4mm	0.5x

Or you can specify the cameras chosen, and its usage (for Microscope or for Telescope), Opto-Edu sales manager will assist you to choose adapters correctly.

1/2.8"	5.7mm	0.5x
1/3"	5.3mm	0.3x
1/4"	4mm	0.3x
Remark: 1"=16mm For Digital Camera's Diagonal Size		

A59.2239 Packing List



Packing List of A59.2240 Series Camera					
Standard Outfit					
A	Gift box : L:25.5cm W:17.0cm H:9.0cm (1pcs, 1.48Kg/ box)				
B	Digital camera				
C	Power Adaptor: Input: AC 100~240V 50Hz/60Hz, Output: DC 12V 1A				
	American standard: Model: GS12U12-P11 12W/12V/1A: UL/CUL/BSMI/CB/FCC				
	EMI Standard:EN55022,EN61204-3, EN61000-3-2,-3, FCC Part 152 class B, BSMI CNS14338				
	EMS Standard:EN61000-4-2,3,4,5,6,8,11,EN61204-3,Class A Light Industry Standard				
	European standard: Model:GS12E12-P11 12W/12V/1A TUV(GS)/CB/CE/ROHS				
	EMI Standard:EN55022,EN61204-3, EN61000-3-2,-3, FCC Part 152 class B, BSMI CNS14338				
	EMS Standard:EN61000-4-2,3,4,5,6,8,11,EN61204-3,Class A Light Industry Standard				
D	USB Mouse				
E	HDMI Cable				
F	USB2.0 A male to A male gold-plated connectors cable /2.0m				
G	CD (Driver & utilities software, Ø12cm)				
Optional Accessory					
H	SD Card(16G or above; Speed: class 10)				
I	Focus Adjustable Eyepiece Adapter	For Microscope	0.37x, C-Mount to Dia.23.2mm		A55.2202-A37
			0.50x, C-Mount to Dia.23.2mm		A55.2202-A50
			0.75x, C-Mount to Dia.23.2mm		A55.2202-A75
		For Telescope	0.37x, C-Mount to Dia.31.75mm		A55.2204-A37
			0.50x, C-Mount to Dia.31.75mm		A55.2204-A50
0.75x, C-Mount to Dia.31.75mm			A55.2204-A75		
J	Focus Fixed Eyepiece Adapter	For Microscope	0.37x, C-Mount to Dia.23.2mm		A55.2202-F37
			0.50x, C-Mount to Dia.23.2mm		A55.2202-F50
			0.75x, C-Mount to Dia.23.2mm		A55.2202-F75
		For Telescope	0.37x, C-Mount to Dia.31.75mm		A55.2204-F37
			0.50x, C-Mount to Dia.31.75mm		A55.2204-F50
0.75x, C-Mount to Dia.31.75mm			A55.2204-F75		
K	Adaptor Rings Dia.23.2mm to 30.0mm For 30.0mm Microscope Eyepiece Tube				A55.2203-30
L	Adaptor Rings Dia.23.2mm to 30.5mm For 30.5mm Microscope Eyepiece Tube				A55.2203-30.5
M	Calibration Stage Micrometer	X=0.01mm/100Div.			
		X,Y=0.01mm/100Div			
		X=0.01mm/100Div., 0.10mm/100Div			
N	USB DISK				
O	USB WIFI Adapter				

Camera Connect To Microscope

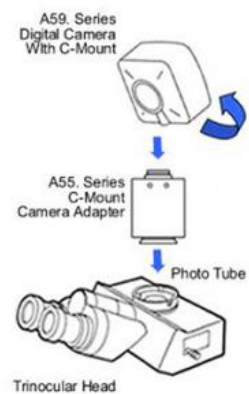


A55.2002
C-Mount to 23.2mm Adapter
For Microscope

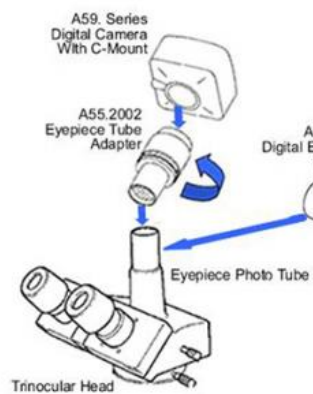


A55.2004
C-Mount to 31.75mm Adapter
For Telescope

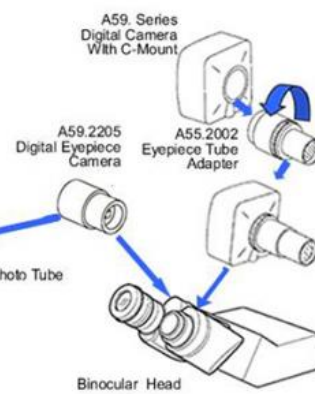
**1. To Trinocular Microscope
On Straight Photo Tube**



**2. To Trinocular Microscope
On Eyepiece Photo Tube**



**3. To Binocular Microscope
On Eyepiece Tube**



Opto-Edu (Beijing) Co., Ltd.

☎ 0086 13911110627

✉ sale@optoedu.com

🌐 cnoec.com

F-1501 Wanda Plaza, No. 18 Shijingshan Road, Beijing 100043, China