



OPTO EDU A59.2208-U Usb 2.0 Cmos Digital Microscope Camera 12M

Our Product Introduction

Basic Information

- Place of Origin: China
- Brand Name: CNOEC, OPTO-EDU
- Certification: CE, Rohs
- Model Number: A59.2208-U
- Minimum Order Quantity: 1 pc
- Price: FOB \$1~1000, Depend on Order Quantity
- Packaging Details: Carton Packing, For Export Transportation
- Delivery Time: 5~20 Days
- Payment Terms: T/T, West Union, Paypal
- Supply Ability: 5000 pcs/ Month

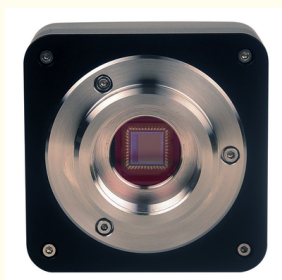


Product Specification

- Applications: Microscope
- Certification: CE|Rohs
- Output: USB 2.0
- Product Name: Microscope Accessories
- Resolution: 10M Pixels
- Sensor: CMOS
- Spectral Range: 380-650nm (with IR-filter), For Monochromatic Camera, AR Is Used
- Recording System: Still Picture And Movie
- Highlight: Cmos Digital Microscope Camera, Usb 2.0 Microscope Camera, 10M Microscope Camera



More Images



Product Description



A59.2208-U USB2.0 CMOS Digital Camera, Buffer Memory



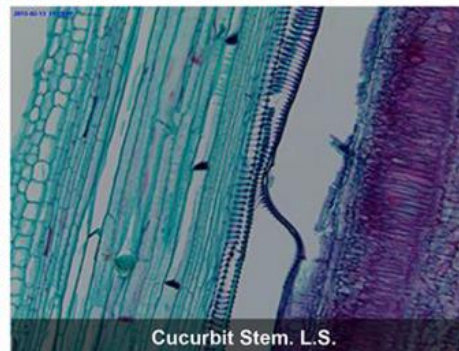
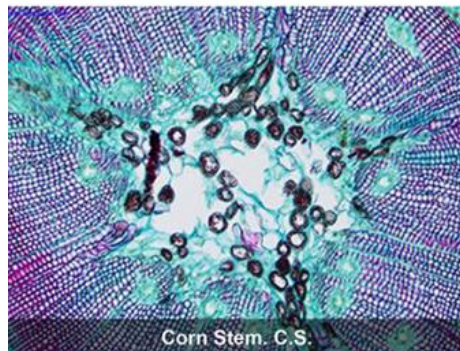
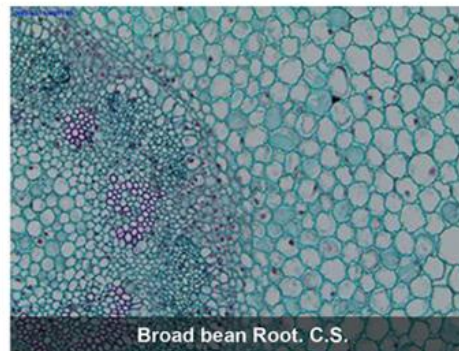
A59.2208-U USB2.0 CMOS Digital Camera, Buffer Memory

A59.2208-U: Touptek A59.2208-U series Microscope Camera is an Advanced USB2.0 CMOS Camera and it adopts ultra-high performance CMOS sensor as the image-picking device. USB2.0 is used as the data transfer interface. External dedicated on-board buffer is added to achieve maximum performance of USB2.0.

A59.2208-U Camera hardware resolutions range from 1.3M to 12M and comes with the CNC aluminum alloy compact housing.

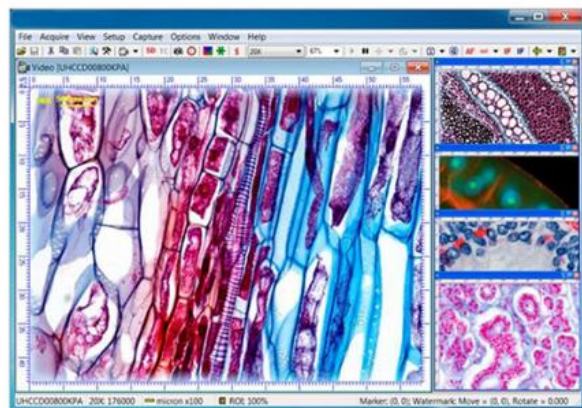
A59.2208-U comes with advanced video & image processing application TouptView; Providing Windows/Linux/macOS/Android multiple platform SDK(Native C/C++, C#/VB.NET, Python, Java, DirectShow, Twain, etc);

The A59.2208-U can be widely used in brightfield light environment and microscope image capture and analysis with moderate frame rate.

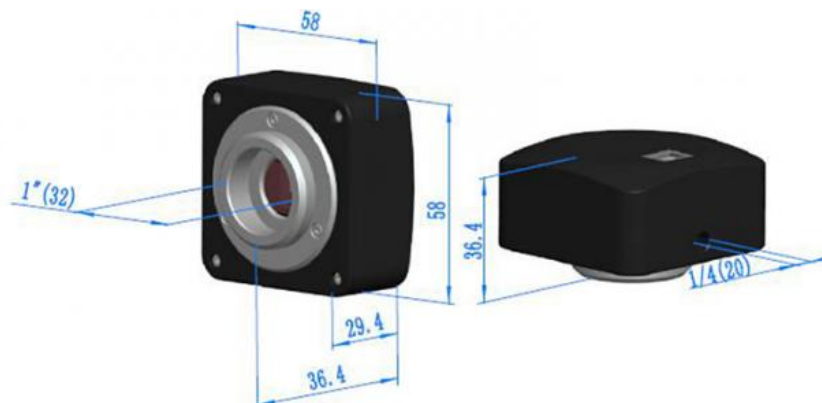


A59.2208-U Specification

OPTO-EDU

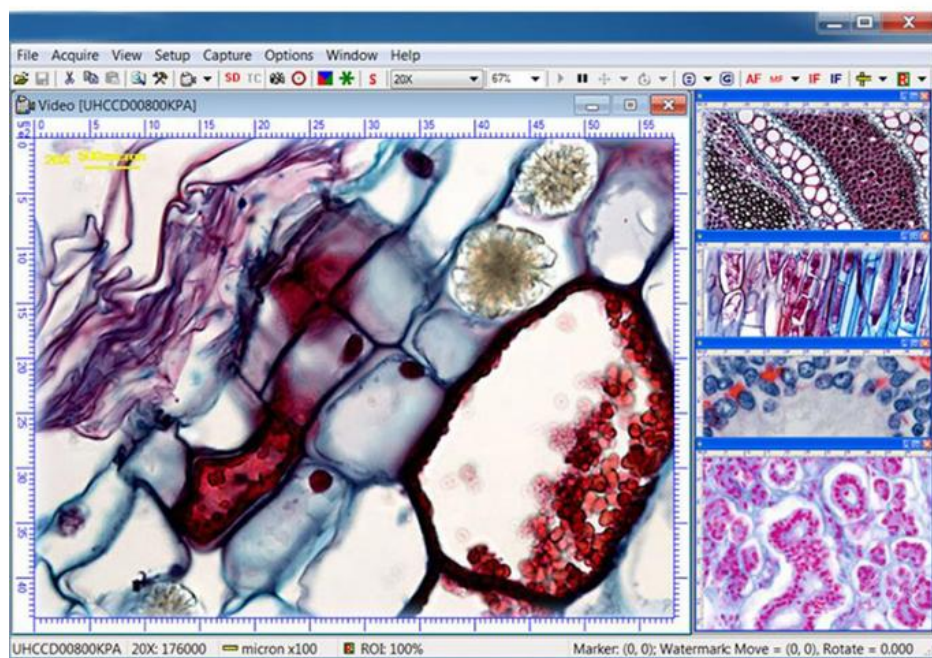


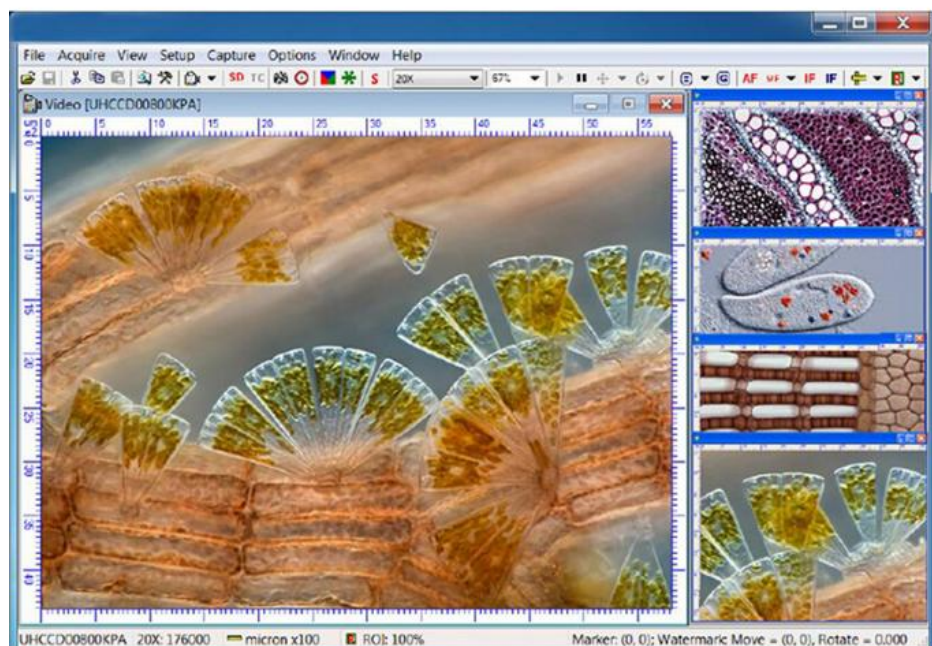
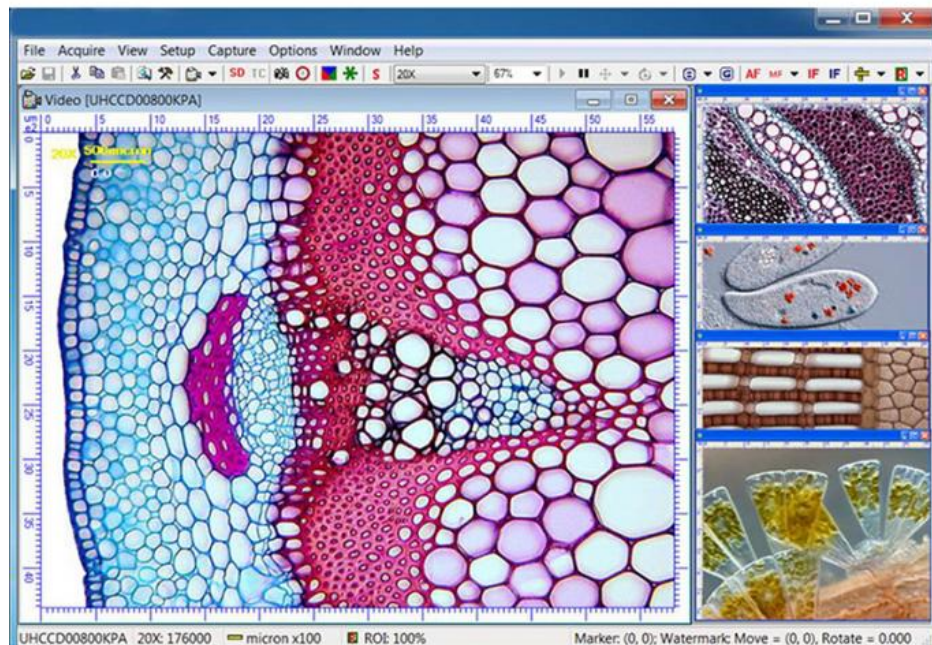
Order Code	Sensor & Size(mm)	Pixel(μm)	G Responsivity Dynamic range SNRmax	FPS/Resolution	Binning	Exposure
12MCA	12M/IMX577© 1/2.1" (5.95x4.71)	1.55x1.55	250mv with 1/30s 0.25mv with 1/30s	3@3840x3040 11@1920x1516 47@960x758	1x1 2x2 4x4	0.4ms~2000ms
10MCA	10M/IMX577© 1/2.3" (5.56x4.26)	1.55x1.55	250mv with 1/30s 0.25mv with 1/30s	3.3@3584x2748 12@1792x1374 53@896x684	1x1 2x2 4x4	0.4ms~2000ms
6.3MCA	6.3M/IMX178© 1/1.8" (7.37x4.92)	2.4x2.4	425mv with 1/30s 0.15mv with 1/30s	5fps@3072x2048 20fps@1536x1024	1x1 2x2	0.244ms~15000ms
6.3MMA	6.3M/IMX178(M) 1/1.8" (7.37x4.92)	2.4x2.4	760mv with 1/30s 0.15mv with 1/30s	5fps@3072x2048 20fps@1536x1024	1x1 2x2	0.244ms~15000ms
5.1MCA	5.1M/AR0521© 1/2.5" (5.70x4.28)	2.2x2.2	18.8ke-/lux 73dB 40dB	7.0@2592x1944 27.7@1296x972 100.5@648x486	1x1 2x2 4x4	0.2ms~2000ms
4.1MCA	4.1M/IMX347© 1/1.8" (7.795x4.408)	2.9x2.9	2376mv with 1/30s 0.15mv with 1/30s	8.5@2688x1536 11.5@2048x1536 15@1536x1536 34@1344x768	1x1 1x1 1x1 1x1	0.1ms~2000ms
4.1MCB	4.1M/IMX664© 1/1.8" (7.795x4.408)	2.9x2.9	5970mv with HCG mode 0.13mv with 1/30s	8.5@2688x1520 34@1344x760	1x1 2x2	0.1ms~2000ms
3.1MCB	3.1M/IMX123© 1/2.8" (5.12x3.84)	2.5x2.5	600mv with 1/30s 0.15mv with 1/30s	11.5@2048x1536 29.5@1024x768	1x1 2x2	0.2ms~2000ms
1.23MCA	1.23M/SC1235© 1/3" (4.80x3.60)	3.75x3.75	4.5V/lux-sec 74dB 38dB	25@1280x960 25@1280x720	1x1 1x1	0.1ms~2000ms



Other Specification	
Spectral Range	380-650nm (with IR-cut Filter)
White Balance	ROI White Balance/ Manual Temp Tint Adjustment/NA for Monochromatic Sensor
Color Technique	Ultra-Fine Color Engine/NA for Monochromatic Sensor
Capture/Control SDK	Windows/Linux/macOS/Android Multiple Platform SDK(Native C/C++, C#/VB.NET, Python, Java, DirectShow, Twain, etc)
ADC	8 Bit
Recording System	Still Picture and Movie
Cooling System*	Natural
Operating Environment	
Operating Temperature(in Centidegree)	-10~ 50
Storage Temperature(in Centidegree)	-20~ 60
Operating Humidity	30~80%RH
Storage Humidity	10~60%RH
Power Supply	DC 5V over PC USB Port
Software Environment	
Operating System	Microsoft® Windows® XP / Vista / 7 / 8 /10 /11 (32 & 64 bit) OSx(Mac OS X) Linux
PC Requirements	CPU: Equal to Intel Core2 2.8GHz or Higher Memory:2GB or More USB Port:USB2.0 High-speed Port Display:17" or Larger CD-ROM

OPTO-EDU





A59.2208-U Packing List

OPTO-EDU



Standard Camera Packing List	
A	Carton L:52cm W:32cm H:33cm (20pcs, 12~17Kg/ carton), not shown in the photo
B	Gift box L:15cm W:15cm H:10cm (0.5~0.55Kg/ box)
C	One UA series camera
D	High-speed USB2.0 A male to B male gold-plated connectors cable /2.0m
E	CD (Driver & utilities software, Ø12cm)

Optional Accessory			
F	Adjustable lens adapter	C-mount to Dia.23.2mm eyepiece tube (Please choose 1 of them for your microscope)	108001/AMA037 108002/AMA050 108003/AMA075
		C-mount to Dia.31.75mm eyepiece tube (Please choose 1 of them for your telescope)	108008/ATA037 108009/ATA050 108010/ATA075
G	Fixed lens adapter	C-mount to Dia.23.2mm eyepiece tube (Please choose 1 of them for your microscope)	108005/FMA037 108006/FMA050 108007/FMA075
		C-mount to Dia.31.75mm eyepiece tube (Please choose 1 of them for your telescope)	108011/FTA037 108012/FTA050 108013/FTA075
Note: For F and G optional items, please specify your Camera type(C-mount, microscope camera or telescope camera) , ToupTek engineer will help you to determine the right microscope or telescope camera adapter for your application;			
H		108015(Dia.23.2mm to 30.0mm ring)/Adapter rings for 30mm eyepiece tube	
I		108016(Dia.23.2mm to 30.5mm ring)/ Adapter rings for 30.5mm eyepiece tube	
J		108017(Dia.23.2mm to 31.75mm Ring)/ Adapter rings for 31.75mm eyepiece tube	
K	Calibration kit	106011/TS-M1(X=0.01mm/100Div.); 106012/TS-M2(X,Y=0.01mm/100Div.); 106013/TS-M7(X=0.01mm/100Div., 0.10mm/100Div.)	

Camera Connect To Microscope

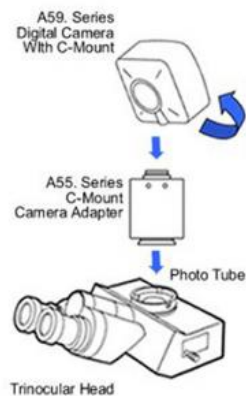
OPTO-EDU



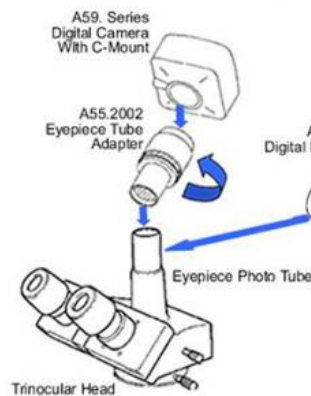
OPTO-EDU

How Camera Connect To Microscope

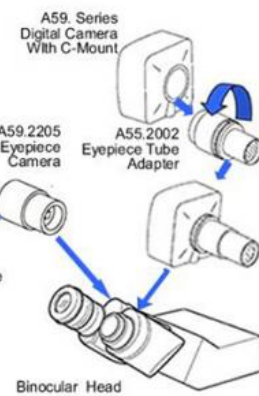
1. To Trinocular Microscope On Straight Photo Tube



2. To Trinocular Microscope On Eyepiece Photo Tube



3. To Binocular Microscope On Eyepiece Tube





Opto-Edu (Beijing) Co., Ltd.



0086 13911110627



sale@optoedu.com



cnoec.com

F-1501 Wanda Plaza, No. 18 Shijingshan Road, Beijing 100043, China