



OPTO EDU A12.2610 Laboratory Biological Microscope

Our Product Introduction

for more products please visit us on cnoec.com

Basic Information

- Place of Origin: China
- Brand Name: OPTO-EDU
- Certification: CE, Rohs
- Model Number: A12.2610
- Minimum Order Quantity: 1 pc
- Price: FOB \$1~1000, Depend on Order Quantity
- Packaging Details: Carton Packing, For Export Transportation
- Delivery Time: 5~20 Days
- Payment Terms: T/T, West Union, Paypal
- Supply Ability: 5000 pcs/ Month

OPTO-EDU



Product Specification

- Eyepiece: WF10x/25mm, High Eyepoint, Diopter Adjustable
- Objectives: Infinity Plan Semi-APO Objective (F.N.25)
- Head: Trinocular Head, Inclined 30°, Rotatable 360°
- Nosepiece: 6 Holes Nosepiece, Inward
- Working Stage: Double Layer Rackless Mechanical Stage
- Condenser: Swing-out Condenser N.A.0.9/0.13, With Scale, Can Be Locked,
- Koehler Illumination: 5W-LED Illumination
- C-mount: 0.5x C-Mount, Focus Adjustable
- Filter: Forested Glass Filter
- LCD: LCD Screen ECO (Optional Only For LED Stand)
- Highlight: **Biological Microscope Laboratory,
OPTO-EDU Biological Microscope,
Laboratory Biological Microscope**

OPTO-EDU



Product Description

2025 Brand New Research Level Laboratory Microscope With Modular Structure Design
 Large Size Trinocular Head With Eyepiece Tube Dia.30mm, Light Split E100:P0/E20:P80/E0:P100
 Super Wide Field SWF10x/22mm Eyepiece Dia.30mm Diopter Adjustable
 Rackless Large Mechanical Stag 182x140mm/77x52mm With Double Slide Holder
 Swing Out Condenser N.A. 0.9/0.13 + High Brightness 6V30W Halogen Koehler Illumination



OPTO-EDU (BEIJING) CO., LTD.

OPTO-EDU

F-1501 Wanda Plaza, No.18 Shijingshan Road, Beijing 100043, China
 Tel:+8610 88696020 Fax:+8610 88696085

A12.2610

Laboratory Biological Microscope



A12.2610 Structure

OPTO-EDU



Coarse and fine precise adjustment system(scale 1μm), Coarse stroke 30mm
 Focusing upper limiting device



280x160mm Rackless integrated
 Large size Mechanical stage, travel range
 80x52mm



► Management System(Optional)

1. Only for LED illumination
2. LCD display
3. Power-on shows customer logo
4. Current magnification of objective display
5. Working brightness display, current brightness memory
6. Working time setting
7. LED bulb color temperature adjustable within 3500K-6000K
8. Brightness adjustment automatically upon different objectives

► Brand new Koehler illumination system ensures excellent optical performance



5W LED Illumination



50W/100W Halogen Illumination

A12.2610 Specification

OPTO-EDU

Research Laboratory Biological Microscope		A12.2610 -Lite	A12.2610	Cata. No.
Eyepiece	WF10x/25mm, High Eyepoint, Diopter Adjustable	●●	●●	A51.2621-1025
	WF10x/23mm, High Eyepoint, Diopter Adjustable	○○	○○	A51.2621-1023
Infinity Plan Objective (F.N.25)	PLAN 4X /0.11, W.D.12.1mm	●		A52.2610-4
	PLAN 10X /0.25, W.D.10.0mm	●		A52.2610-10
	PLAN 20X /0.45, W.D.3.33mm	●		A52.2610-20
	PLAN 40X /0.70 (S), W.D.2.61mm	●		A52.2610-40
	PLAN 100X /1.25 (S,Oil), W.D.0.25mm	●		A52.2610-100
	PLAN 2X /0.06, W.D.7.2mm	○		A52.2606-2
	PLAN S-APO 4X /0.10, W.D.16.2mm		●	A52.2611-4
Infinity Plan Semi-APO Objective (F.N.25)	PLAN S-APO 10X /0.30, W.D.9.6mm		●	A52.2611-10
	PLAN S-APO 20X /0.45, W.D.2.8mm		●	A52.2611-20
	PLAN S-APO 40X /0.70 (S), W.D.0.55mm		●	A52.261140
	PLAN S-APO 100X /1.25 (S,Oil), W.D.0.21mm		●	A52.2611-100
Head	Trinocular Head, Inclined 30°, Rotatable 360°, Interpupillary Distance 48-76mm, 3 Light Split Ratio: E100:P0, E80:P20, E0:P100	○	●	A53.2610-T18
	Trinocular Head, Inclined 30°, Rotatable 360°, Interpupillary Distance 48-76mm, 2 Light Split Ratio: E100:P0, E80:P20	●	○	A53.2610-T13
Nosepiece	6 Holes Nosepiece, Inward	●	●	A54.2610-N6
Working Stage	Double Layer Rackless Mechanical Stage, Size 280x160mm, Moving 80x52mm, Double Slide Holder	●	●	A54.2601-AT280
Condenser	Swing-out Condenser N.A.0.9/0.13, With Scale, Can Be Locked,	●	●	A56.2614-C11
Polarizing	Analyzer, Put In Slide Insert To Hole On Nosepiece Polarizer, Put On Stand Light Collector	○	○	A5P.2601-BK
Dark Field	Dry Dark Field Condenser, Apply For 4x - 40x Objective	○	○	A5D.2610-BK
	Immersion Dark Field Condenser, Apply For 100x Objective	○	○	A5D.2610-BKW
Phase Contrast	5 Holes Phase Contrast Condenser, With Infinity Plan Phase Contrast Objective 10x,20x,40x,100x, Centering Telescope 10x	○	○	A5C.2603-BS
LED Fluorescence	LED Fluorescent Illuminator, 2 Filters B/G, With Barrier, 5W LED Bulb Move With Filter	○	○	A5F.2610-2
	LED Fluorescent Illuminator, 4 Filters B/G/Uv/U, With Barrier, 5W LED Bulb Move With Filter	○	○	A5F.2610-4
	Fluorescent Filters, FITC, DAPI, TRITC, Cy5, FishAqua, FishGreen, etc	○	○	A5F.2620
	Fluorescent Filters, Chroma B, G, UV	○	○	A5F.2621
Koehler Illumination	5W-LED Illumination	●	●	A56.2612-5WL
	12V/50W Halogen Lamp	○	○	A56.2613-12V50WL
	12V/100W Halogen Lamp	○	○	A56.2613-12V100WL

C-mount	0.5x C-Mount, Focus Adjustable	●	●	A55.2601-05
	0.35x C-Mount, Focus Adjustable	○	○	A55.2601-35
	0.75x C-Mount, Focus Adjustable	○	○	A55.2601-75
	1.0x C-Mount, Focus Adjustable	○	○	A55.2601-10
Filter	Forested Glass Filter	●	●	A56.2616-RSN
	Blue/ Green/ Yellow	○	○	A56.2616-RSB
	Green Filter	○	○	A56.2616-RSG
	Yellow Filter	○	○	A56.2616-RSY
LCD Screen ECO (Optional Only For LED Stand)	LCD Screen Optional For A12.2610 LED Stand, Function: 1,Show Customer Logo 2,Show Objective Magnification 3,Show & Remember Brightness For Each Objective 4,Set ECO Timer 5,Adjust Light Color Temperature 3500K--6000K.	○	○	A56.2661

A12.2610 Accessories

OPTO-EDU



► A53.2610-T13 (For A12.2610-Lite)

Trinocular Head, Inclined 30°, Rotatable 360°,
Interpupillary Distance 48-76mm, 2 Light Split Ratio:
E100:P0, E80:P20

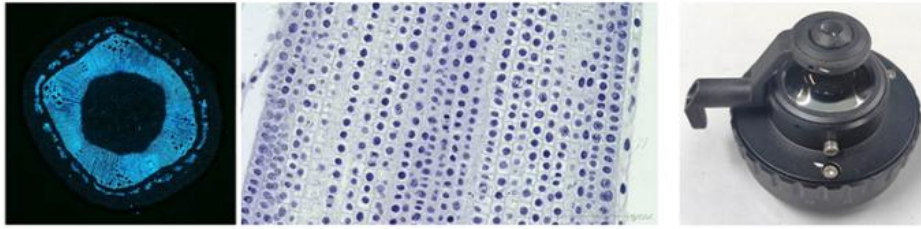
► A53.2610-T18 (For A12.2610)

Trinocular Head, Inclined 30°, Rotatable 360°,
Interpupillary Distance 48-76mm, 3 Light Split Ratio:
E100:P0, E80:P20, E0:P100



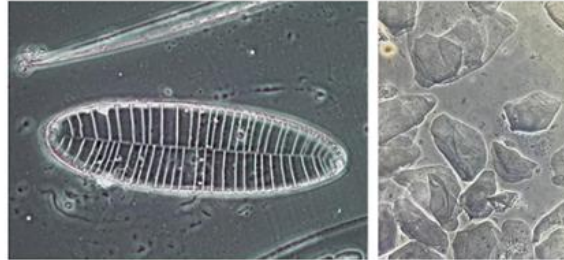
► A52.2611 Infinity Plan Semi-APO Objective (F.N.25)

► Brightfield Observation

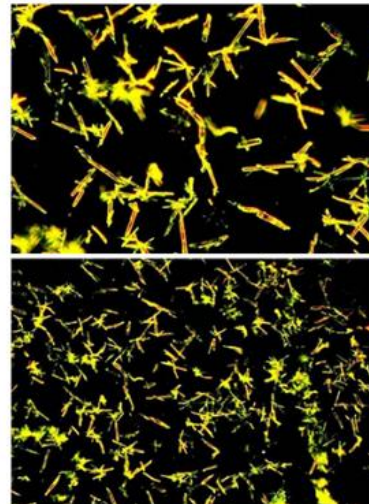


Swing-out condenser

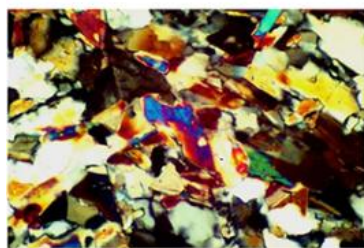
► Phase Contrast Observation

Qunituple turret phase contrast unit
10X/20X/40X/100X

► Darkfield Observation

Dry darkfield
condenserWet darkfield
condenser

► Polarizing Observation



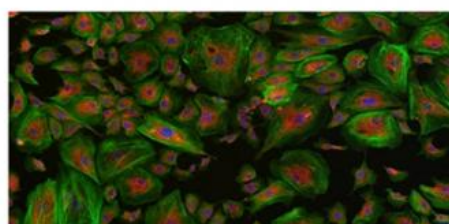
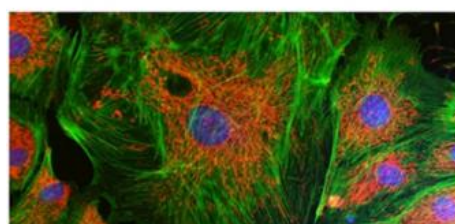
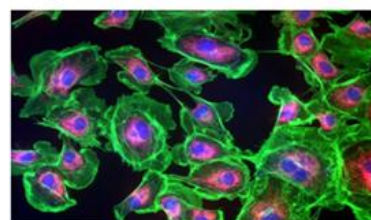
► Fluorescence Observation



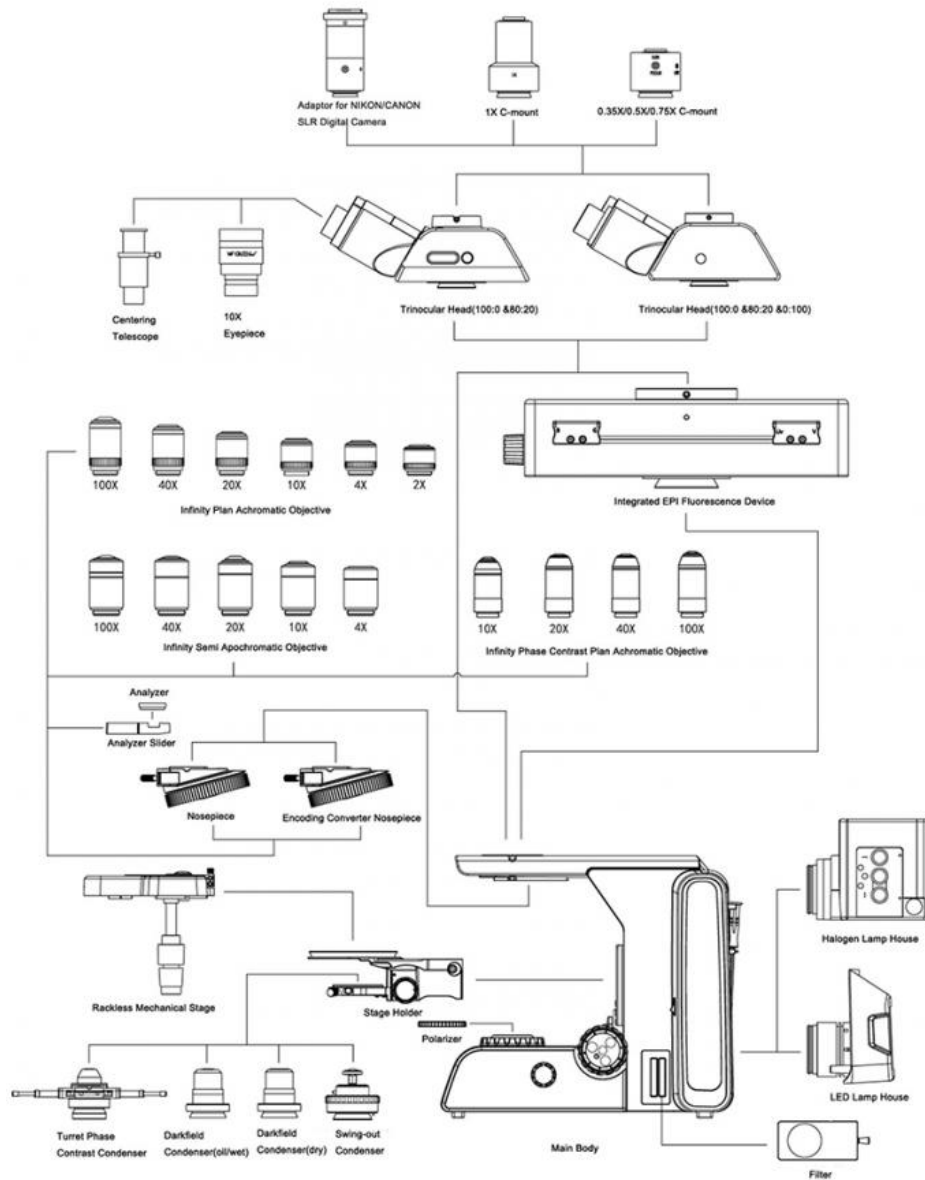
BRS-FL Fluorescence Microscope(LED lamp)



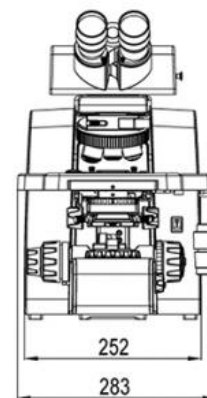
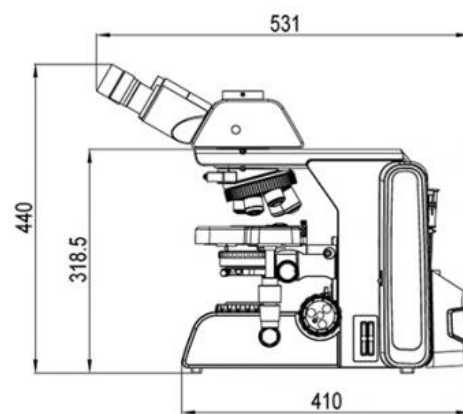
Integrated EPI LED Fluorescence Device



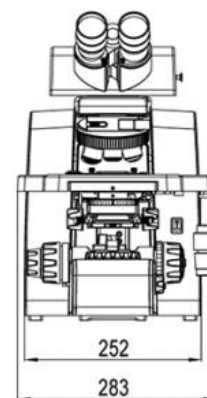
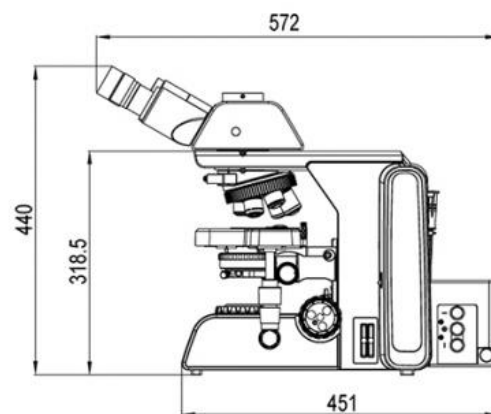
► A12.2610 Biological Microscope General Layout Diaphragm

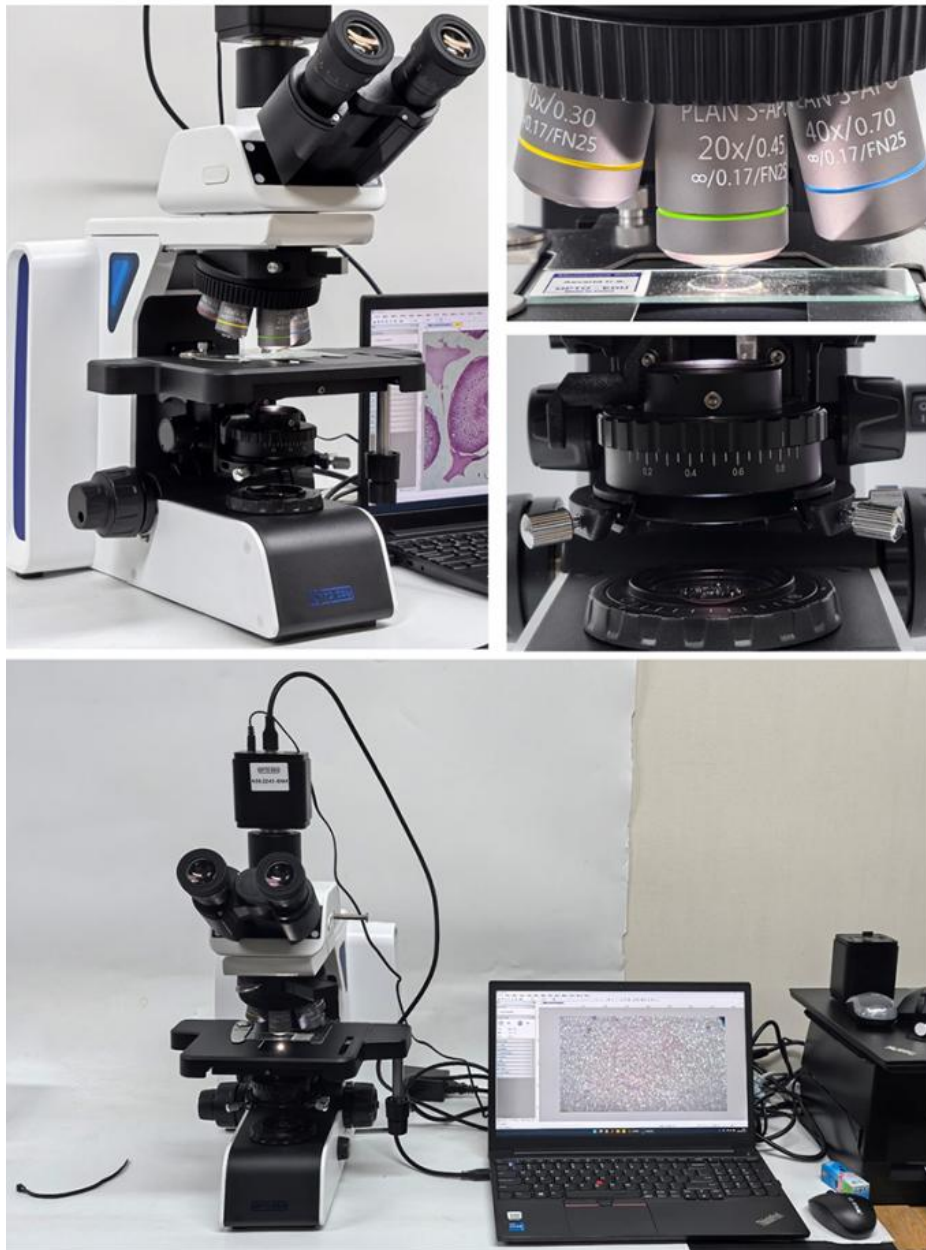


► A12.2610 Series Biological Microscope(LED Version)



► A12.2610 Series Biological Microscope(Halogen Version)





Opto-Edu (Beijing) Co., Ltd.

☎ 0086 13911110627

✉ sale@optoedu.com

🌐 cnoec.com

F-1501 Wanda Plaza, No. 18 Shijingshan Road, Beijing 100043, China