



OPTO EDU A59.2264 13.3" LCD Digital Camera HDMI Mouse Measure USB3.0 WIFI 8.0M 4K

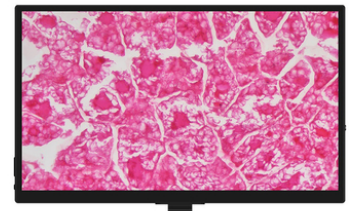
Our Product Introduction

for more products please visit us on cnoec.com

Basic Information

- Place of Origin: China
- Brand Name: CNOEC, OPTO-EDU
- Certification: CE, Rohs
- Model Number: A59.2264
- Minimum Order Quantity: 1 pc
- Price: FOB \$1~1000, Depend on Order Quantity
- Packaging Details: Carton Packing, For Export Transportation
- Delivery Time: 5~20 Days
- Payment Terms: T/T, West Union, Paypal
- Supply Ability: 5000 pcs/ Month

OPTO-EDU



Product Specification

- Interface Or Button: Function Description
- USB 2.0: Connect USB Mouse For Easy Operation With Embedded XCamView Software
- USB Video: Connect PC Or Other Host Device To Realize Video Image Transmission
- ON/OFF: Power Switch (Short Press To Turn On, Long Press To Turn Off)
- LED: LED Status Indicator
- MENU: Display Menu Key
- Video Output Interface: Function Description
- Highlight: **13.3" LCD Digital Camera, USB3.0 Digital Camera, HDMI Mouse Digital Camera**

OPTO-EDU



Product Description

13.3" LCD Screen High Resolution 3840*2160 Pixels 4K Image
 8.0M 4K Digital Camera 1/1.8" CMOS Sony Sensor, Pixel 2.0x2.0um
 Built-in XCamView Menu Support USB Mouse Control Direct Measure
 HDMI 2.0, USB 3.0 Image Output, WIFI Support AP/STA For Net Work
 10x Digital Zoom, Auto Edge Finding, Auto Measurement, Multi-image EDF Function



OPTO-EDU (BEIJING) CO., LTD.

OPTO-EDU

F-1501 Wanda Plaza, No.18 Shijingshan Road, Beijing 100043, China
 Tel:+8610 88696020 Fax:+8610 88696085

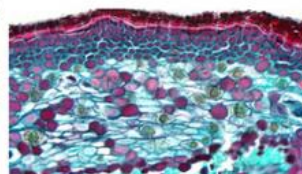
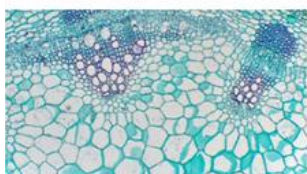
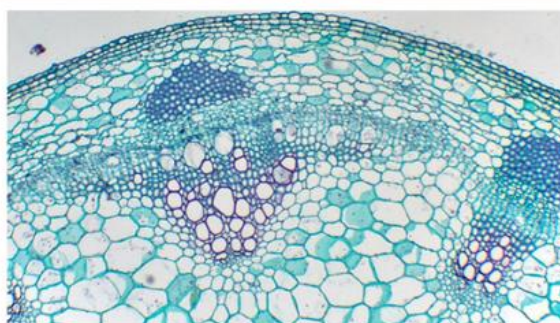
A59.2264

13.3" LCD Digital Camera, 8.0M 4K
 HDMI + Mouse Measure, USB3.0, WIFI,



A59.2264 Details

OPTO-EDU

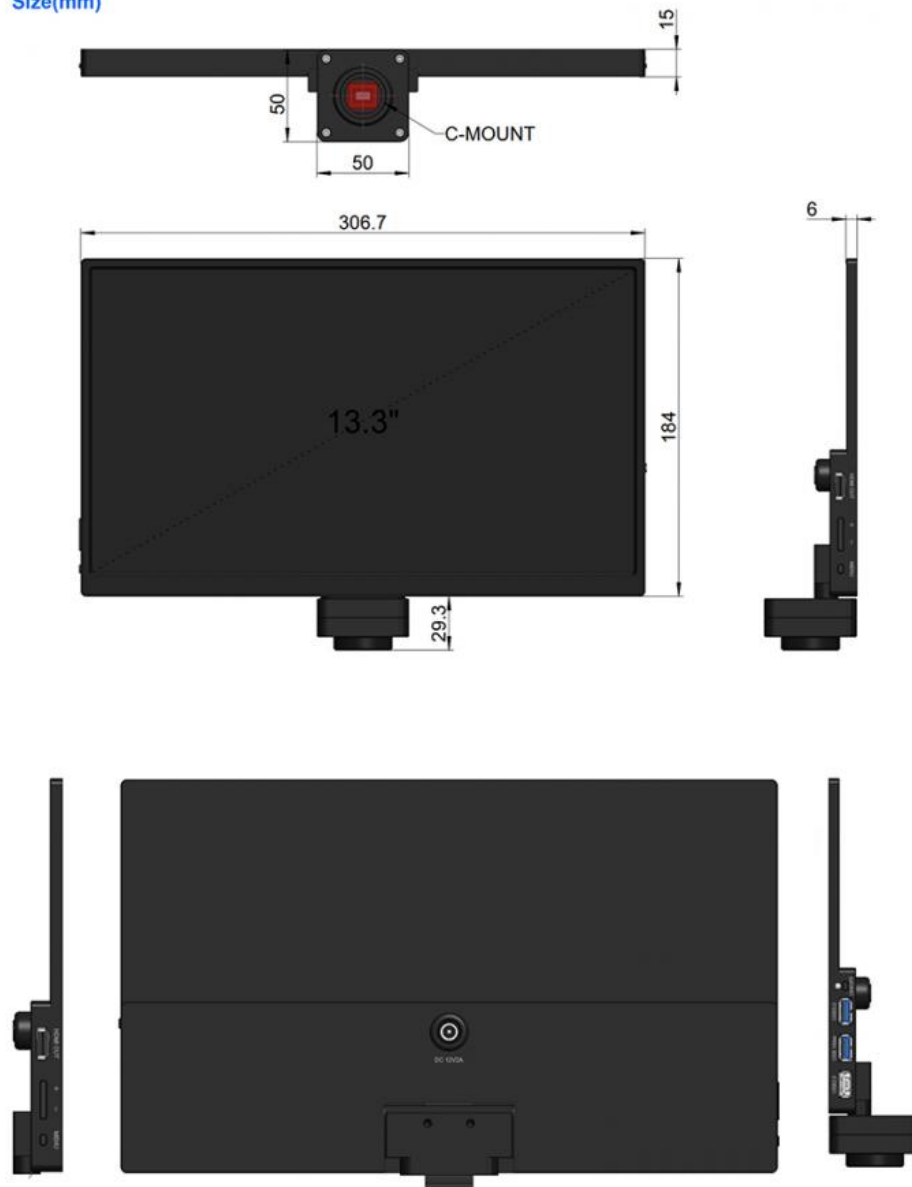


Series All-in-One Camera Configurations

The A59.2264 is a multifunctional all-in-one Camera that integrates a 13.3-inch display screen and a 4K image acquisition and processing system for capturing digital images of stereo microscopes, biological microscopes, or online interactive teaching.

- The Camera and display screen are integrated together, eliminating wiring and facilitating installation
- Sony STARVIS 2 back-illuminated CMOS sensor
- The average delay of display screen output is 40ms
- Support HDMI2.0 interface connection to external displays for synchronous output, 4K/1080P auto switching according to monitor resolution
- Support USB 3.0 interface for synchronous output of real-time video
- Provide real-time video WDR output function
- Provide real-time video EDF function
- USB flash drive for captured image and video storage, support local preview and playback
- Excellent ISP with local tone mapping and 3D denoising
- Provide two sets of default ISP parameters for biological microscope and stereo microscope
- Embedded XCamView for the control of the Camera and image processing, supporting automatic edge finding and measurement functions
- New browsing function, providing rich file operation functions, image to image comparison, image to real-time video comparison, multi-image EDF and other functions
- ToupView/ToupLite software for PC
- iOS/Android applications for smart phones or tablets

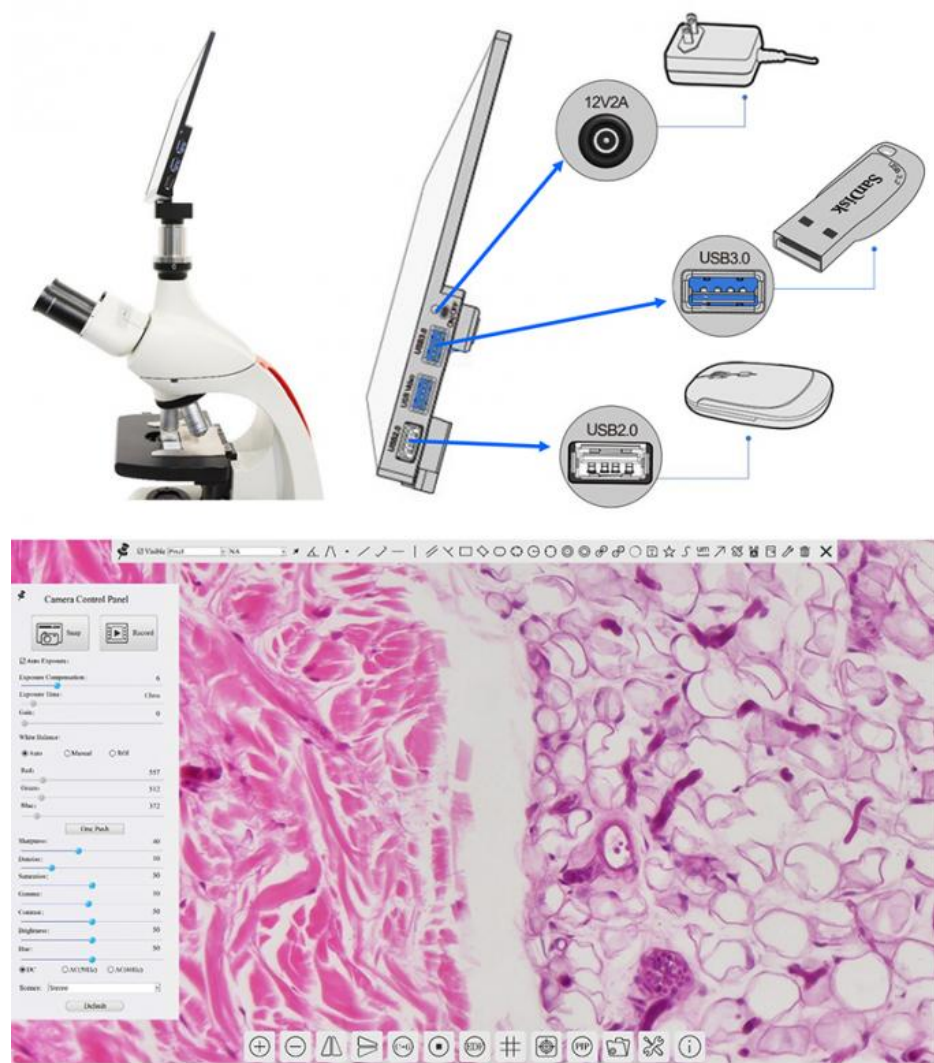
Size(mm)



Series All-in-One Camera Configurations

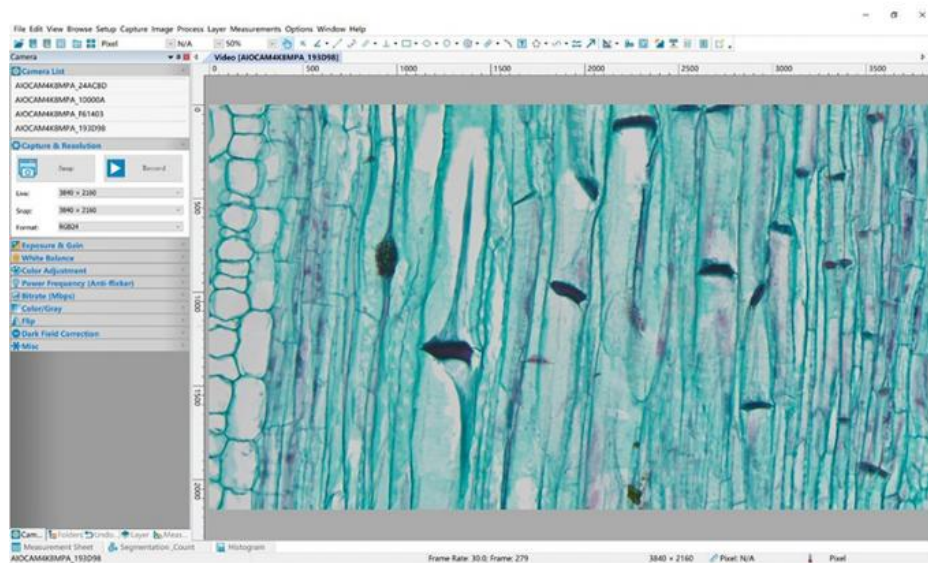
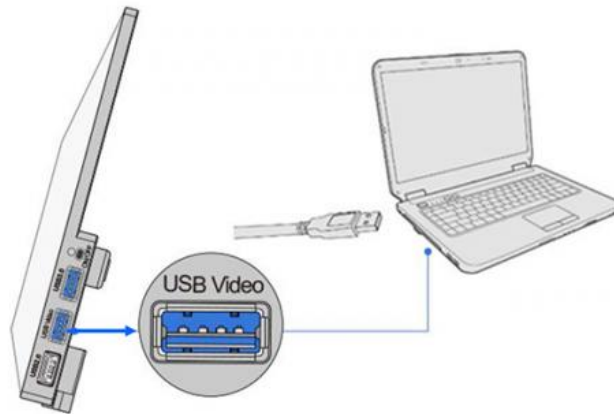
You can use the A59.2264 series all-in-one camera in 4 different ways. Each application requires different hardware environment.

1.Camera working standalone with built-in software



2. Connecting camera to computers with USB3.0 port

Install Image View on your PC or install View App on the mobile device; Run the software Image View, clicking the camera name in the Camera List group to start the live video



3. Camera working in WiFi mode (AP mode)

Plug the USB WiFi adapter into the camera's USB3.0 port. Install Image View on your PC or install View App on the mobile device; Run the software View/ Lite, A59.2264 series all-in-one cameras will be automatically recognized. The view live image.



4. Connecting multi-cameras to the router through the WiFi STA mode for the network application

Multi A59.2264 series all-in-one cameras are connected to router through the WiFi STA mode, and the user can control the HDMI camera on the computer or mobile device through WiFi.

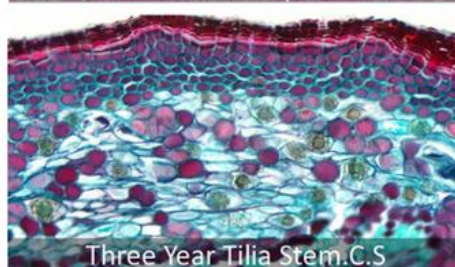
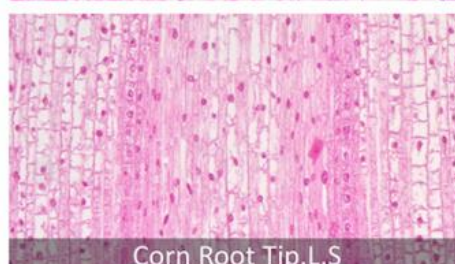
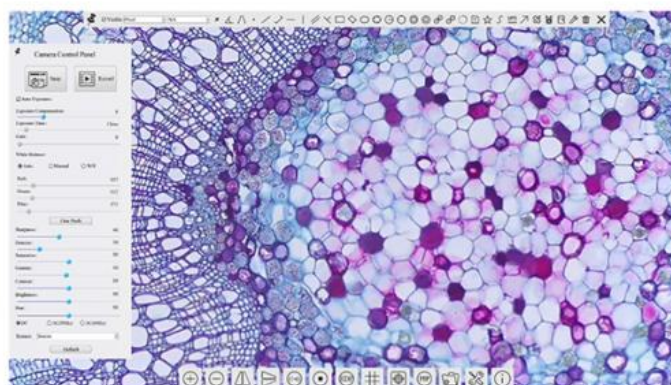


A59.2264 13.3" LCD Digital Camera, HDMI+Mouse Measure, USB3.0, WIFI, 8.0M 4K Specification		
Interface or Button		Function Description
USB 2.0		Connect USB mouse for easy operation with embedded XCamView software
USB Video		Connect PC or other host device to realize video image transmission
USB3.0		Connect USB flash drive to save pictures and videos
		Connect 5G WiFi module to transfer video wirelessly in real time
		Connect USB microphone for audio and video recording
ON/OFF		Power switch (Short press to turn on, long press to turn off)
HDMI OUT		Comply with HDMI2.0 standard. Used to extend 4K/1080P format video output and supporting automatic switch between 4K and 1080P format according to the connected monitors
LED		LED status indicator
+/-		Display brightness adjustment button
MENU		Display menu key
DC 12V2A		Power adapter connection (12V/2A)
Video Output Interface		Function Description
HDMI Interface		Synchronize video output through HDMI OUT interface, comply with HDMI2.0 standard; 60fps@4K Or 60fps@1080P
WiFi Interface		Connecting 5G WiFi adapter (USB3.0 slot) in AP/STA mode
USB Video Interface		Connecting USB Video port of PC for video transfer
		H264/MJPEG format video
Other Function		Function Description
Video Saving		Video format:8M (3840*2160) H264/H265 encoded MP4 file
		Video saving frame rate: 60fps in Low Delay mode; 30fps in WDR mode
Image Capture		8M (3840*2160) JPEG/TIFF image in USB flash drive
Measurement Saving		Measurement information saved in different layer with image content
		Measurement information is saved together with image content in burn in mode
ISP		Exposure(Automatic / Manual Exposure) / Gain , White Balance(Manual / Automatic / ROI Mode) , Sharpening, 3D Denoise , Saturation Adjustment, Contrast Adjustment, Brightness Adjustment, Gamma Adjustment, Hue Adjustment, Color to Gray, 50HZ/60HZ Anti-flicker Function
Image Operation		Zoom In/Zoom Out (Up to 10X), Mirror/Flip, Freeze, Video EDF, Cross Line, Overlay, PIP, Browser (including Picture Browsing, Video Playback, Video Compare, Picture Compare, Picture EDF, Image Processing), Measurement Function
Embedded RTC(Optional)		To support accurate time on board
Restore Factory Settings		Restore camera parameters to its factory status
Multiple Language Support		English / Simplified Chinese / Traditional Chinese / Korean / Thailand / French / German / Spanish / Japanese / Italian / Russian / Dutch / Portuguese
Software Environment under WiFi/USB Video Output		
White Balance		Auto White Balance
Color Technique		Ultra-Fine Color Engine
Capture/Control SDK		Windows/Linux/macOS/Android Multiple Platform SDK (Native C/C++, C#/VB.NET, Python, Java, DirectShow, Twain, etc)
Recording System		Still Picture or Movie
Operating System		Microsoft® Windows® 8 / 8.1 / 10 / 11(32 & 64 bit)
		OSx(Mac OS X)
		Linux
PC Requirements		CPU: Equal to Intel Core2 2.8GHz or Higher
		Memory: 4GB or More
		Ethernet Port: RJ45 Ethernet Port
		Display:19" or Larger
		CD-ROM
Operating Environment		
Operating Temperature (in Centidegree)	(in	-10°~ 50°
Storage Temperature (in Centidegree)	(in	-20°~ 60°

Operating Humidity	30~80%RH
Storage Humidity	10~60%RH
Power Supply	DC 12V/2A Adapter

A59.2264 Software and Application Examples

OPTO-EDU



Corn Leaf

Three Year Tilia Stem.C.S



Standard Packing List	
A	Gift box: L:35.6cm W:24.9cm H:7.5cm (1pcs, 1.68Kg/ box)
B	AIOCAM4K Series All-in-One Camera
C	Power Adapter: Input: AC 100~240V 50Hz/60Hz, Output: DC 12V 2A
	American standard: Model: POWER-12V2A(MX24Z1-1202000) + American standard plug
	European standard:Model: POWER-12V2A(MX24Z1-1202000) + European standard plug
D	USB wireless mouse
E	USB3.0 A male to A male gold-plated connectors cable /2.0m
F	CD (Driver & utilities software, Ø12cm)
Optional Accessory	
G	HDMI Cable
H	USB flash drive
I	USB WiFi adapter



Opto-Edu (Beijing) Co., Ltd.



0086 13911110627



sale@optoedu.com



cnoec.com

F-1501 Wanda Plaza, No. 18 Shijingshan Road, Beijing 100043, China