



Opto Edu M12.5851 BF XYZ Stage Motorized Laboratory Biological Microscope

Our Product Introduction

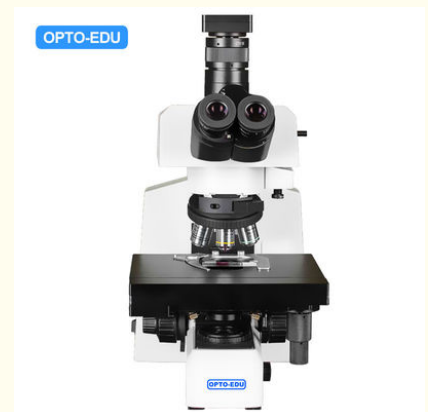
Basic Information

- Place of Origin: China
- Brand Name: CNOEC, OPTO-EDU
- Certification: CE, Rohs
- Model Number: M12.5851
- Minimum Order Quantity: 1 pc
- Price: FOB \$1~1000, Depend on Order Quantity
- Packaging Details: Carton Packing, For Export Transportation
- Delivery Time: 5~20 Days
- Payment Terms: T/T, West Union, Paypal
- Supply Ability: 5000 pcs/ Month



Product Specification

- Eyepiece: PL10x/25mm, High Eyepoint, Diopter Adjustable
- Head: Inverted Image, 30° Inclined Gemel Trinocular Head
- Objective: Infinity Plan Achromatic Objective
- Nosepiece: Quintuple Nosepiece (with DIC Slot)
- Focusing: Low-position Coaxial Coarse And Fine Adjustment And Autofocus Mechanism
- Motorized Working Stage: Motorized Three Layers Stage, Size 260mm X 221mm
- Highlight: **XYZ Stage Motorized Laboratory Biological Microscope**
, opto edu, opto edu microscope



for more products please visit us on cnoec.com

Product Description

The microscope scanning system is a high-performance microscope with innovative functions, including XYZ axis, manual and automatic functions, intelligent scanning software and analysis functions, and user-friendly design, providing operators with a more efficient and intelligent microscopic observation experience. It will greatly improve the efficiency and ability of microscopic observation, promote the development of scientific research and medical diagnosis, and provide you with cost-effective solutions.



OPTO-EDU (BEIJING) CO., LTD.

OPTO-EDU

F-1501 Wanda Plaza, No.18 Shijingshan Road, Beijing 100043, China
Tel:+8610 88696020 Fax:+8610 88696085

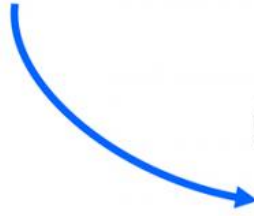
M12.5851

Full Auto Motorized Microscope,
Semi-APO, Upgrade BF+DF+PL+PH+FL+DIC





A12.0910
Laboratory Microscope,
Semi-APO, Upgrade BF+DF+PL+PH+FL+DIC

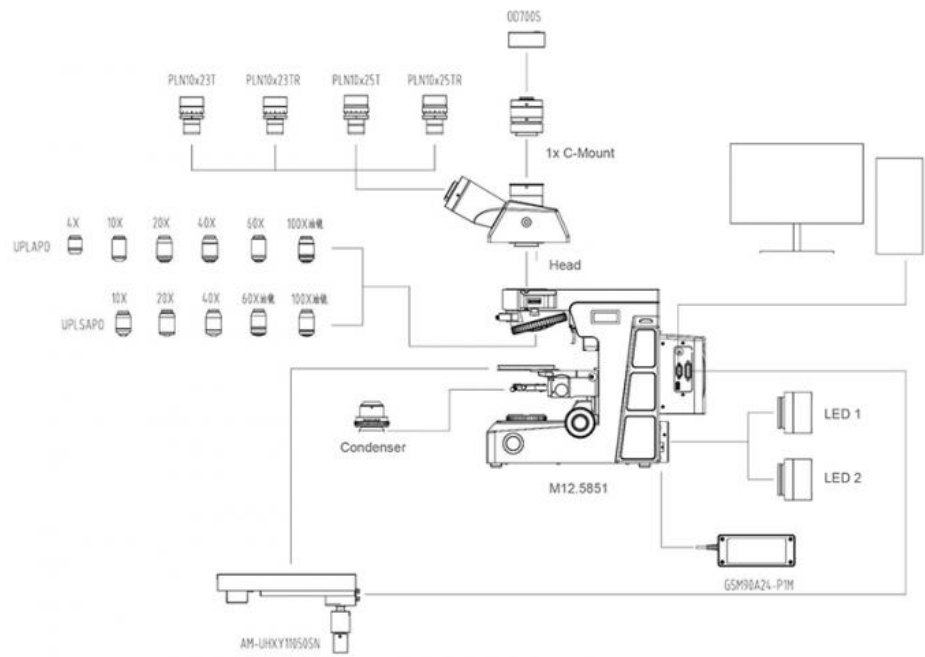


M12.5851
Motorized Microscope
Semi-APO, Upgrade BF+DF+PL+PH+FL+DIC



Intelligent upgrade, providing you with comprehensive and flexible solutions

The microscope scanning system is a high-performance microscope with innovative functions, including XYZ axis, manual and automatic functions, intelligent scanning software and analysis functions, and user-friendly design, providing operators with a more efficient and intelligent microscopic observation experience. It will greatly improve the efficiency and ability of microscopic observation, promote the development of scientific research and medical diagnosis, and provide you with cost-effective solutions.



► **One click full film imaging**

One click full film imaging, reading the slide number, and providing an overview of the full film information. Greatly improved work efficiency and diagnostic accuracy.

► **Research level microscope platform**

Through the XYZ axis manual and automatic integration function, the operation process is greatly simplified. Operators can easily adjust the focal length through simple operations. Translate and rotate parameters to achieve fast and accurate microscopic observation.

► **Highly scalable**

Users can flexibly match hardware according to experimental needs to meet specific experimental needs, providing maximum scalability for in-depth research work.

► **Compound eye lighting system**

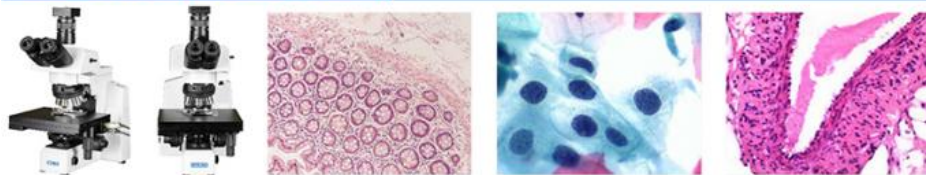
Adopting a compound eye lighting system to increase contrast and effectively enhance the uniformity of illumination on the specimen surface, the brightness of the entire field of view is uniform, and even at the edge of the field of view, uniform and bright background brightness can be achieved at any magnification.



► **LED light source safety and environmental protection**

Using LED light source, green and environmentally friendly, the lighting is soft and not harsh, not only achieving better imaging results, but also reducing fatigue and improving observation experience.

M12.5851 Specification



M12.5851 Specification		Qty.	No.
Eyepiece	PL10x/23mm, high eyepoint, diopter adjustable	○	A51.0904-1023T
	PL10x/23mm, high eyepoint, diopter adjustable, with micrometer	○	A51.0905-1023NRT
	PL10x/25mm, high eyepoint, diopter adjustable	●●	A51.0904-1025T
	PL10x/25mm, high eyepoint, diopter adjustable, with micrometer	○	A51.0905-1025NRT
Head	Inverted image, 30° inclined gemel trinocular head, interpupillary distance: 50mm~76mm; splitting ratio R:T=100:0 or 20:80 or 0:100	●	
Infinity Plan Apochromatic Objective	Plan apochromatic objective 4X/0.16,WD=12.8mm	●	A5F.0962-4
	Plan apochromatic objective 10X/0.40,WD=3.2mm	●	A5F.0962-10
	Plan apochromatic objective 20X/0.75,WD=0.6mm	●	A5F.0962-20
	Plan apochromatic objective 40X/0.95,WD=0.15mm	●	A5F.0962-40
	Plan apochromatic objective 60X/0.90,WD=0.26mm	○	A5F.0962-60
	Plan apochromatic objective 100X(immersion)/1.35,WD=0.13mm	●	A5F.0962-100
Infinity Plan Super Apochromatic Objective	Plan super apochromatic objective 10X/0.4, WD=3.1mm	○	A5F.0963-10
	Plan super apochromatic objective 20X/0.80, WD=0.6mm	○	A5F.0963-20
	Plan super apochromatic objective 40X/0.95, WD=0.18mm	○	A5F.0963-40
	Plan super apochromatic objective (immersion) 60X/1.42, WD=0.17mm	○	A5F.0963-60
	Plan super apochromatic objective (immersion) 100X/1.45, WD=0.14mm	○	A5F.0963-100
Nosepiece	Quintuple nosepiece (with DIC slot)	●	

Focusing	Frame, compound eye illumination system, include low-position coaxial coarse and fine adjustment and Autofocus mechanism. Manual coarse adjustment distance 15mm, fine precision 0.001mm. Autofocus range 3mm, Repeatability 1um. with coarse adjustment stop and tightness adjustment, intensity adjustable. (Including 1.3 million macro camera to position the scanning area)	●	
Motorized Working Stage	Motorized three layers stage, size 260mm X 221mm, moving range: 110mm X 50mm; positioning accuracy 5um, Repeatability ±3um, Max. speed: 20mm/s	●	
Condenser	Long working distance condenser, N.A.0.65 with iris diaphragm	●	
LED Lamp House	Wide wave 3W LED lamp house (color temperature 4000±100K)	○	Same Cost
	Wide wave 3W LED lamp house (color temperature 4750~5500K)	●	
Adapter	1X focusing C-mount	●	
Power	Wide voltage adapter, input 100V~240V, output 24V/3.75A	●	
Accessories	M4 Allen key	●	
Camera	7M high-speed camera, color camera, sensor 1.1" (14.4*9.9mm), frame rate of 51.4fps, resolution 3200*2200, USB3.0, pixel size 4.5*4.5um	●	
Software	Scanning software: real-time collection of images and photo; support automatic white balance, brightness adjustment, gain adjustment; support measurement and scale, labeling, can export measurement data, support PC software to control microscope electric function (XYZ axis); support autofocus; support The maximum 50mm (X) X25mm (Y) area scan and spliced. Software contains encrypted dogs	●	
Computer	Dell Precision T3660: CPU: Intel i5 12400 memory: 32G graphics card: RTX1660S display: P2722 (resolution 1920*1080) hard disk: HDD 1TB and SSD 256G motherboard: USB3.0 interface 3 operating system: Windows 10 x64	●	
Packing	Pearl sponge+inside carton+outer carton	●	



Opto-Edu (Beijing) Co., Ltd.

☎ 0086 13911110627

✉ sale@optoedu.com

🌐 cnoec.com

F-1501 Wanda Plaza, No. 18 Shijingshan Road, Beijing 100043, China