



## OPTO-EDU A18.1862 Rugged Tenprint Enrollment Scanner With Comparison Software FBI's Appendix-F Certified

### Our Product Introduction

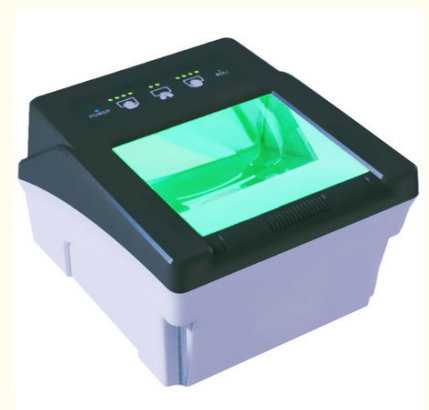
#### Basic Information

- Place of Origin: China
- Brand Name: CNOEC, OPTO-EDU
- Certification: CE, Rohs
- Model Number: A18.1862
- Minimum Order Quantity: 1 pc
- Price: FOB \$1~1000, Depend on Order Quantity
- Packaging Details: Carton Packing, For Export Transportation
- Delivery Time: 5~20 Days
- Payment Terms: T/T, West Union, Paypal
- Supply Ability: 5000 pcs/ Month



#### Product Specification

- Image Types: Single Flats, Rolls, 4-fingers And 2-thumbs Slaps
- Image Resolution: 500 Dpi, 256 Levels Of Gray
- Image Quality: FBI's IAFIS IQS Appendix-F Certified
- Image/Template Format: BMP, WSQ, ISO 19794-4, ISO 19794-2
- Acquisition Mode: Auto Capture And Manual Mode
- Visual Indicators: Intuitive 12 LEDs For Visual Operation
- Highlight: **OPTO-EDU tenprint enrollment scanner, Rugged tenprint enrollment scanner, tenprint enrollment scanner**





## A18.1862

**Rugged Tenprint Enrollment Scanner,  
With Comparison Software,  
FBI's Appendix-F Certified**



### A18.1862 Specification



## A18.1861 Palm + Finger Scanner

A18.1862 is the compact and lightest ten print scanner fully certified with FBI's IAFIS Appendix-F specification which enables the scanner to deliver reliable and superior image quality and make it the optimal capturing device for national ID enrollment or background check. The most advanced optical technology and dedicated special lighting source plus the enhanced fingerprint identification algorithm that allow the high speed finger capturing and seamless image processing including rolled prints. The integrated automatic capture functionality ensures rapid capturing of high quality image for biometric data collection and eliminates the possible reprint issues.

### ► KEY FEATURES

- Sliding detection for flat prints capturing
- Latent prints and halo elimination from recent scans
- Automatic device calibration when scanner starts up
- Auto segmentation of slaps into discrete single image
- Automatic sequence and image quality checking
- Robust design with low maintenance required
- Correct finger position and slap completeness check
- Auto capture functionality to eliminate reprint issues
- Visual indicators for intuitive instructions

### ► USE CASES

- Immigration and border control
- Voter registration
- ePassport and Visa issuing
- e-Gate and Kiosk integration
- National ID enrollment

A18.1862 Rugged Ten print Enrollment Scanner	
Image Types	Single flats, rolls, 4-fingers and 2-thumbs slaps
Capture Area	3.6" x 3.2" (92mm x 81mm)
Image Size	3.2" x 3.0" (1600 x 1500 pixels) for slaps
	1.6" x 1.5" (800 x 750 pixels) for rolled fingerprints
Image Resolution	500 dpi, 256 levels of gray
Image Quality	FBI's IAFIS IQS Appendix-F certified
Image/Template Format	BMP, WSQ, ISO 19794-4, ISO 19794-2
Acquisition Mode	Auto capture and manual mode
Status Indicators	Intuitive 12 LEDs for visual operation
Buzzer	On board programmable
MTBF	In excess of 50,000 hours
Interface	USB 2.0 high speed
Weight	1.2 kg
Dimensions (L*W*H)	160mm x 135mm x 90mm
Operating Systems	Windows, Android, Linux
Software & SDKs	Scan demo, APIs with Java, C++, C#, WebAPI
Operating Temperature	0°C to 50°C
Storage Temperature	-20°C to 60°C
Humidity Range	10% to 90%, non-condensing



**Opto-Edu (Beijing) Co., Ltd.**



0086 13911110627



sale@optoedu.com



cnoec.com

F-1501 Wanda Plaza, No. 18 Shijingshan Road, Beijing 100043, China