



## OPTO-EDU Infinity Trinocular Biological Laboratory Microscope with Kohler Illumination Nano Anti-Wear Ceramic Coating and Coaxial Coarse Fine Focusing

### Our Product Introduction

#### Basic Information

- Place of Origin: China
- Brand Name: OPTO-EDU
- Certification: CE, Rohs
- Model Number: A12.2253
- Minimum Order Quantity: 1 pc
- Price: FOB \$1~1000, Depend on Order Quantity
- Packaging Details: Carton Packing, For Export Transportation
- Delivery Time: 5~20 Days
- Payment Terms: T/T, West Union, Paypal
- Supply Ability: 5000 pcs/ Month



#### Product Specification

- Head: Trinocular
- Eyepiece: WF10X/23
- Nosepiece: 6 Holes Manual Operating Nosepiece
- Objective: Achromatic 4x10x20x40x100x
- Working Stage: Manual Operating Working Stage Nano Anti-Wear Ceramic Coating Surface Right Hand XY Moving Knob With Damping Adjustment Ring
- Focusing: Focusing Range: 27mm Coaxial Coarse And Fine Focusing System With Safety Stop Lock Ring & Tension Adjustable
- Condenser: Abbe Condenser N.A=1.1
- Illumination: Built-in Transmit Kohler Illumination, LED
- Highlight: **A12.2243 Biological Laboratory Microscope, OPTO-EDU Biological Laboratory Microscope, Infinity Trinocular Biological Laboratory Microscope**

## OPTO-EDU A12.2253 Infinity Trinocular Biological Laboratory Microscope



A13.2253  
Metallurgical Microscope



A12.2253  
Laboratory  
Biological Microscope



A16.2253  
Fluorescent Microscope



### Key Features

- Infinity Plan Achromatic Optical System with 45mm confocal distance
- Trinocular head with ultra-wide field view and multiple light split options
- Diopter adjustable eyepieces with comfortable eyecups
- 6-hole coded manual nosepiece with RMS thread
- Precision manual stage with nano anti-wear ceramic coating

SUPERMLED™ high-power LED illumination with 60,000 hour lifespan

Button-controlled magnification switching for reduced contamination

Optional fluorescent illuminator with multiple excitation modules

Upgradeable to electric XYZ stage with integrated control software

## Detailed Specifications

### Optical System

ECGO Infinity Plan Mutual Achromatic Optical System with 45mm confocal distance. Features superior light transmission and minimal chromatic aberration for crisp, clear images.



### Head & Eyepieces

Trinocular head with 30° inclination, rotatable upright image, and multiple light split options (E0/P100, E50/P50). Diopter adjustable eyepieces (-2~+8°) with interpupillary distance of 50-80mm and optional field numbers (FN=23mm, 25mm, or 26.5mm).



### Objectives

Infinity Plan Achromatic Objectives: 4x (NA=0.13), 10x (NA=0.30), 20x (NA=0.50), 40x (NA=0.75), and 100x (NA=1.3). All objectives feature anti-mold coating and lead-free glass construction.



### Stage & Focus

Manual operating stage (3"x2") with nano anti-wear ceramic coating and right-handed XY coaxial adjustment. Coaxial coarse & fine focusing with safety stop lock ring, 27mm focusing range, and 1µm fine scale.



### Illumination

SUPERMLED™ 10W LED light source with 60,000 hour lifespan, 4500K color temperature, and Kohler illumination system. Features automatic light intensity management for consistent brightness across magnifications.



### Advanced Features

- Tool-free disassembly and assembly of reflective filter blocks
- Special anti-mold coating on all optical components
- ECGO infinite bidirectional chromatic aberration calibration system
- Maintenance-free long-life LED light source with solar simulation
- Antibacterial coating on all contact surfaces
- USB output for computer control of all electronic components

### Optional Motorized System

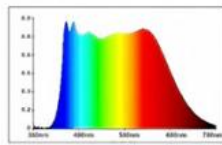
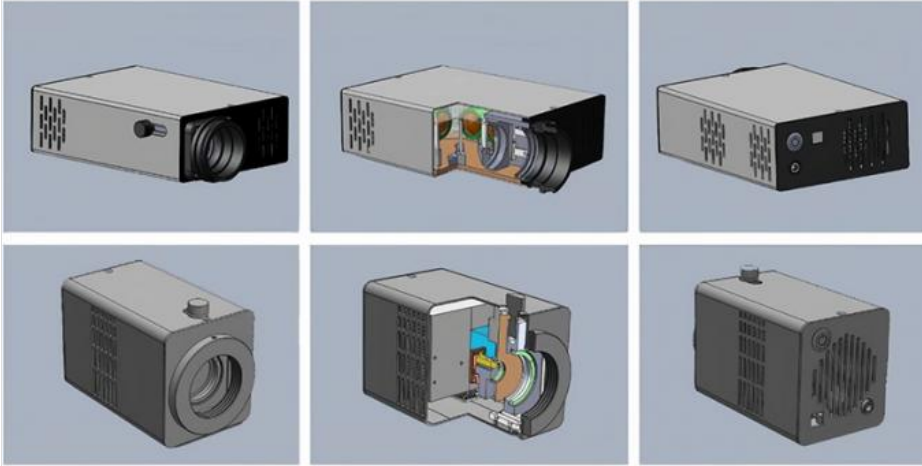
Upgrade to full motorized control with high-precision electric platform (stepper motor), encoded electric Z-axis accessories, and multifunctional computer drive. Includes integrated control software for centralized operation of all electronic microscope components.



### Technical Specifications

Item	A12.2253 Laboratory Biological Microscope Series	Part No.
------	--	----------

Optical System	ECGO Infinity Plan Mutual Achromatic Optical System, Confocal: 45mm	A54.2201 - S53F
Standard Observation Method	Bright Field (BF)	-
Optional Observation Methods	Dark Field (DF), Phase Contrast (PH), Polarizing (PL), Fluorescent (FL)	-
Main Body	SC53F Manual Body with power supply for both transmit & reflect light, one key switch T/R, transmit Kohler illumination built-in, LIM light intensity management, ECO auto power off function, and USB port for computer connection	SC53F
Objectives	UPLN Infinity Plan Achromatic: 4x, 10x, 20x, 40x, 100x (OFN=26.5)	UPLN Series
Condenser	Abbe Condenser, N.A=1.1, 4x~100x (standard), Optional Achromatic Aplanatic Condenser N.A=1.4	U-AC2
Transmit Illumination	SUPERMLED 10W LED Light House, 60,000 hour lifespan, 4500K color temperature, Kohler illumination	U-LHLED10
Working Stage	Manual Working Stage 3"x2", 255x160mm, moving 55x75mm, ultra hard nano wear-resistant ceramic coating, with damping adjust ring	U-SVRB



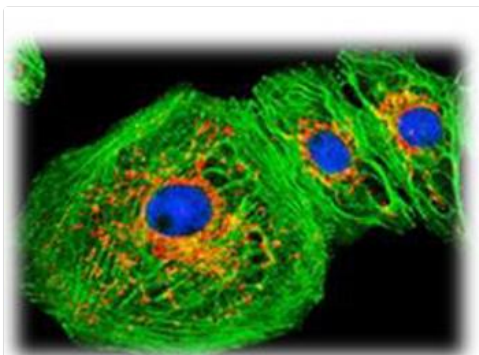
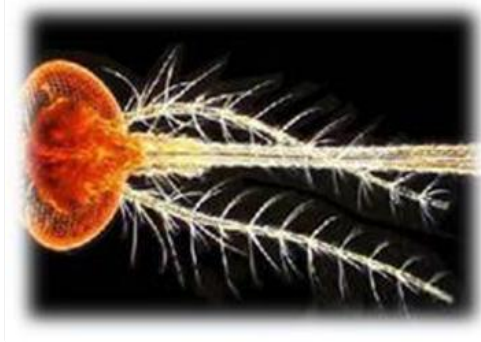
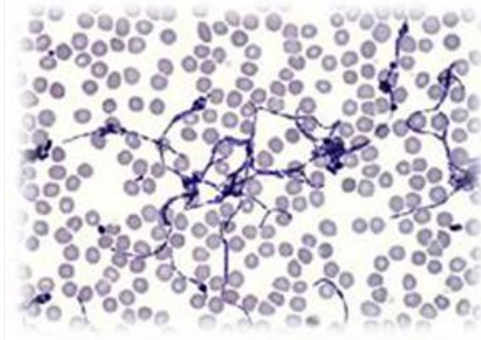
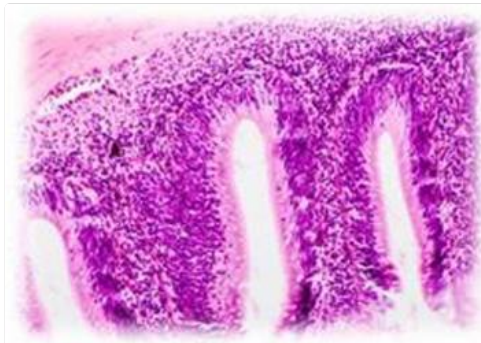
High Power and Wide Spectral  
White LED Light Source



Ultra High Power and Wide Spectral  
White LED Light Source

**A12.2253, A13.2253, A16.2253 Features**

**OPTO-EDU**





A12.2253



A16.2253



A13.2253

#### Included Accessories

Immersion Oil 8ml (Reflect Ratio=1.518, Low Viscosity 135CST)

Chinese Standard Power Adapter 220V/24V/36W DC

Dust Cover

Latex Gloves

Hexagonal Tool Kit (3#, 4#)

Packing Carton



A54.2201-S53F  
Manual Main Body



A54.2201-S53F2  
Full Motorized Main Body



A54.2201-SA



A53.2201-ST01



A53.2201-ST02



A55.2201-1xC



A53.2201-ST03



A53.2201-ST04



A55.2201-1xA



A55.2201-63xA



A55.2201-63xB



A55.2201-63xC



A55.2201-05xC





A5M.2211 (Metallurgical BF Objective: MPLFLN Infinity Plan Semi-Apo EPI BF Objective)



A5M.2212 (Metallurgical BF Objective: NEOPLAN Infinity Semi-APO FL EPI BF Objective)



A5M.2215 (Metallurgical BF/DF Objective: MPLFLN Infinity Plan Semi-APO EPI BD Objective)



A5M.2216 (Metallurgical BF/DF Objective: MXAPO Infinity Plan Semi-APO FL EPI BD Objective)



A5C.2212 (Phase Contrast Objective: UPLFLN Infinity Plan Semi-APO FL Phase Contrast Objective)



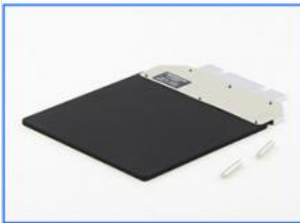
A54.2204-O32



A54.2204-O44



A54.2204-SH



A54.2204-M32



A54.2204-M33



A54.2204-M44



A56.2201-S



A56.2201-11



A56.2201-14



A56.2204-1



A56.2204-2



A5F.2201



A5F.2201-L93



A5F.2201-L91



A5F.2201-LC93



A5F.2201-LC91



A50.2202-3



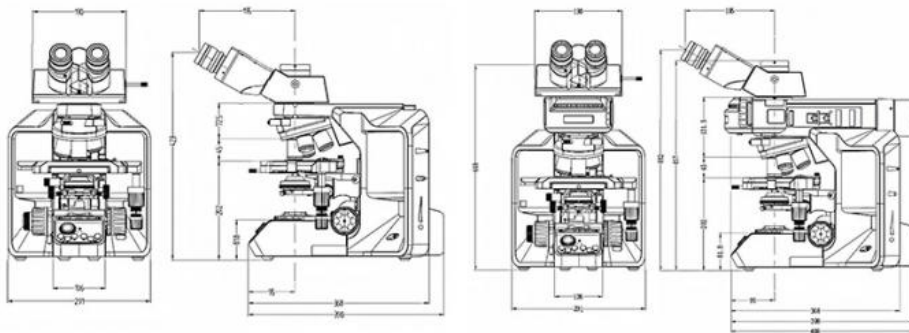
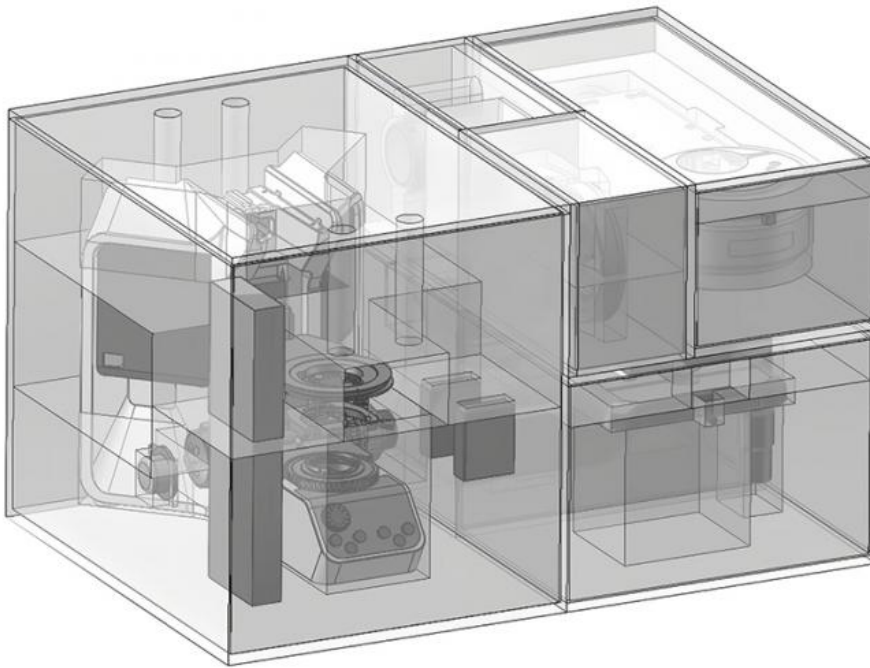
A50.2203-5

				
A5F.2201-OLY	A5F.2210-BL	A5F.2210-GL	A5F.2210-UVL	
				
A5M.2201-SC	A5M.2201-LH1	A5D.2201-D	A5D.2201-I	
				
A54.2204-R	A5C.2201	A5C.2201-G45	A5P.2201-P45	A5P.2201-P30
				
A5M.2231-HA	A5P.2201-A	A5P.2201-A3	A5P.2201-P45H	A5P.2210
				
A59.2271-3M	A59.2271-6.3M	A59.2271-20M	A59.2272-8M	A59.2272-12.8M
				
A54.2206-30	A54.2206-30SH4	A54.2207-3	A54.2208-M200	A54.2208-MCP

## A12.2253, A13.2253, A16.2253 Dimension

OPTO-EDU

Carton Box: 695mm X 480mm X 435mm  
Gross Weight: 30kg



Unit: mm





**Opto-Edu (Beijing) Co., Ltd.**



0086 13911110627



sale@optoedu.com



cnoec.com

F-1501 Wanda Plaza, No. 18 Shijingshan Road, Beijing 100043, China