



## OPTO-EDU A18.4903 Digital Camera Stereo Comparison Microscope

Our Product Introduction

for more products please visit us on [cnoec.com](http://cnoec.com)

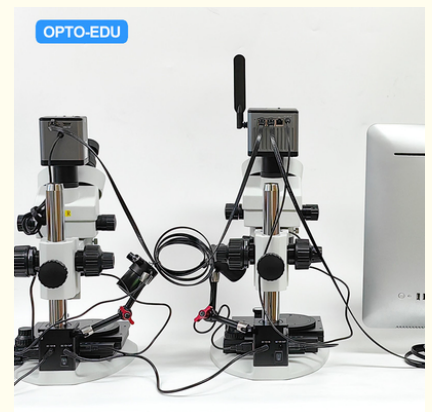
### Basic Information

- Place of Origin: China
- Brand Name: CNOEC, OPTO-EDU
- Certification: CE, Rohs
- Model Number: A18.4903
- Minimum Order Quantity: 1 pc
- Price: FOB \$1~1000, Depend on Order Quantity
- Packaging Details: Carton Packing, For Export Transportation
- Delivery Time: 5~20 Days
- Payment Terms: T/T, West Union, Paypal
- Supply Ability: 5000 pcs/ Month

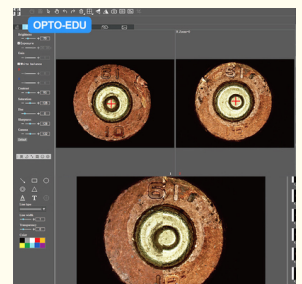


### Product Specification

- Microscope: Main Microscope Marked "L", Secondary Microscope Marked "R"
- Magnification: 7x-45x, Optional Eyepiece Extension 7x-125x, Support Continuous Zoom (Freeze)
- Objective Lens: 0.7x-4.5x Continuous Zoom (Freeze) Objective Zoom Ratio 6.4:1
- Physical Resolution: 12.0MP And 20.0MP
- Output: USB, Lan, HDMI And USB, Lan, WIFI
- Image Sensor: SONY CMOS
- Highlight: **A18.4903 Comparison Microscope, OPTO-EDU Comparison Microscope, Stereo Comparison Microscope**



### More Images



## Product Description



OPTO-EDU (BEIJING) CO., LTD.

OPTO-EDU

F-1501 Wanda Plaza, No.18 Shijingshan Road, Beijing 100043, China  
Tel:+8610 88696020 Fax:+8610 88696085

# A18.4903

## Digital Stere Comparison Microscope



### Optical Performance

The microscope is featured with 7X-45X continuous zoom (freeze), full par-focal HD optical lens, good achromatic effect, resulting in a clear, bright and flat image. Its base can be individually adjusted X, Y, and R axis, which can be adjusted in time according to the characteristics of usage habits, usage scenarios and observation objects, and the operation is more user-friendly.



### Optical Performance

The microscope is featured with 7X-45X continuous zoom (freeze), full par-focal HD optical lens, good achromatic effect, resulting in a clear, bright and flat image. Its base can be individually adjusted X, Y, and R axis, which can be adjusted in time according to the characteristics of usage habits, usage scenarios and observation objects, and the operation is more user-friendly.

### A18.4903 Details

OPTO-EDU

## ► Unique and Clever Lighting System

This illumination system is an innovative combination of near-coaxial falling light , four-zone lamps and six-color oblique illumination, which can evenly illuminate glossy flat surfaces, enhance scratched, recessed or embossed features, highlight indicated unevenness, overcome interference caused by surface reflection, improve microscope reproducibility, and highlight more details that cannot be displayed by pure optical microscopes.

## ► Near-coaxial Falling Light

Evenly illuminate flat, shiny surfaces and enhance scratched, recessed or embossed features. Highlight object surface unevenness, overcome interference caused by surface reflection, improve microscope reproducibility, and highlight more details that cannot be displayed by conventional microscopes.

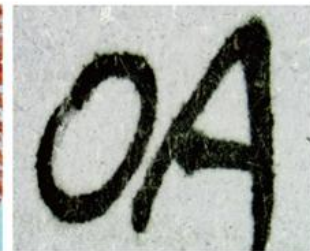
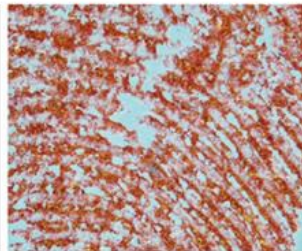


Near-coaxial Falling Light



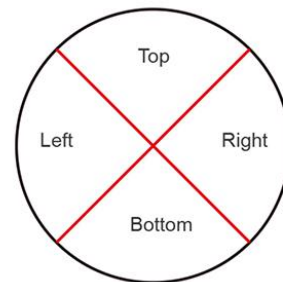
Brightness Control Knob

Near-coaxial Light Switch



## ► Four-zone Diffuse Reflection Lamps

The four-zone diffuse reflection lamps is an LED ring design, containing 72 high-brightness lamp beads, and the four zones of top, bottom, left and right can be freely controlled.



Diffuse Lamp Partition Diagram



Four-zone Diffuse Reflection Lamps



Turn on/off, Partition Control Buttons

Brightness Control

### ► Six-color Oblique Illumination

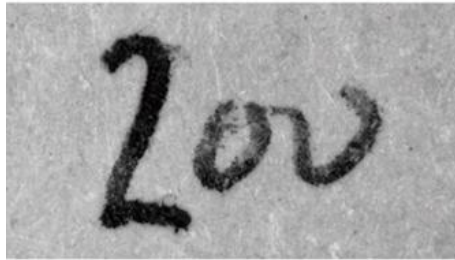
Unique six-color oblique illumination, with low voltage, low energy consumption, safety and stability, long life, high brightness and low light decay and other characteristics.

Users can choose different wavelengths of light to observe according to different observation characteristics or applications, easily capable of traces, signatures, seals observation and other needs.

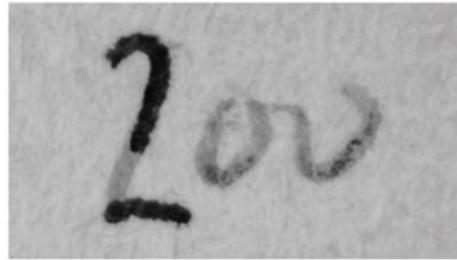




Handwriting Identification: Original Number 100

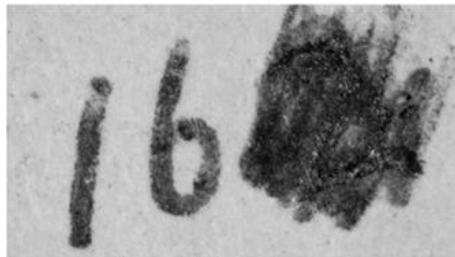


Near-coaxial+ Four-zone Diffuse Reflection Lamps

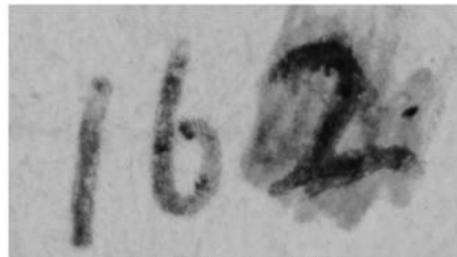


Six-color Lamp: Blue Light

Handwriting Identification: Original Number 162

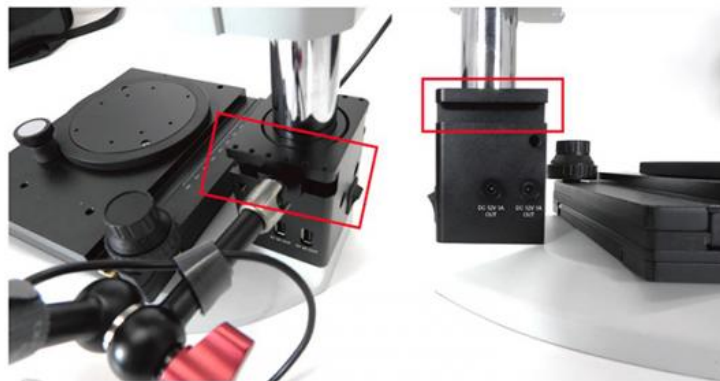


Near-coaxial + Quadrant Light



Six-color Lamp: Purple Light

The six-color oblique illumination can be mounted on the left or right side of the microscope according to the observation needs, without complicated installation steps, and can be easily fixed with only one hand-screw.



### ► Embedded Centralized Power Supply

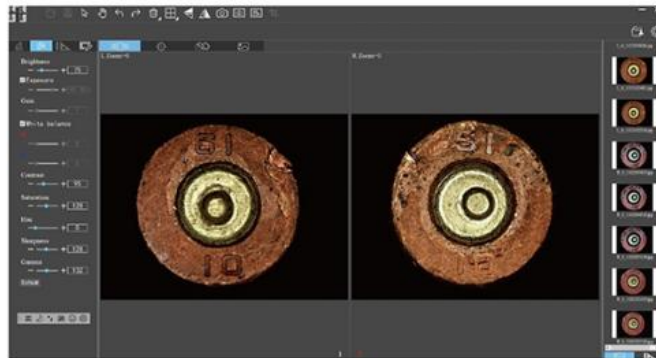
The built-in centralized power outlet design only needs a power cord to simultaneously power near-coaxial lamps, four-zone lamps, six-color oblique lamps and cameras, making the desktop clean and neat.



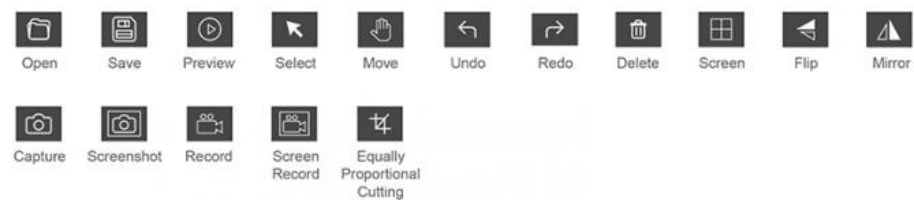
Power input: DC 12V 5A, Power output: three 5V 2A, Power output: two 12V 1A

## ► Advantages

- I Horizontal comparison of each pair of pixels, the results are qualitative and quantitative to avoid human interference.
- I Full field of view displayed on double-screen can be arbitrarily overlapped, cut, and arbitrarily setting transparency, which is intuitive for everyone.
- I Support history image comparison, dynamic and static image contrast, comparison.
- I Dual screen can be freely and independently adjusting parameter settings, including white balance, exposure, brightness, contrast, saturation and more.



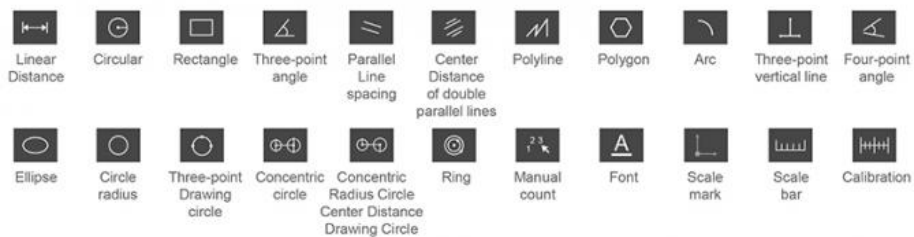
## ► Common Functions



## ► Annotation Functions

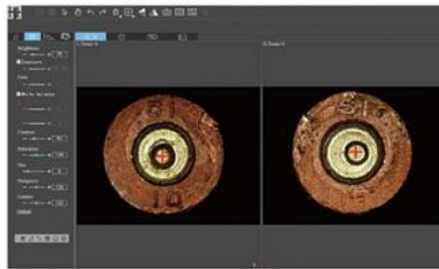


## ► Measurement Functions

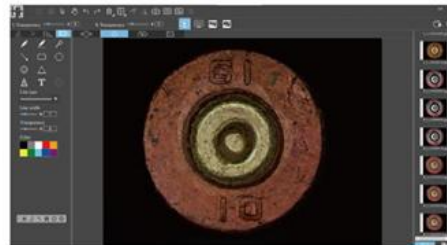


## ► Image Calibration Function

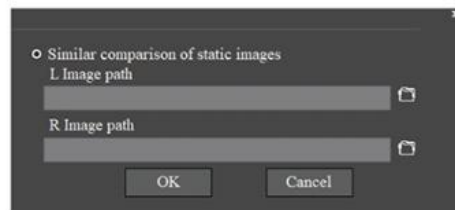




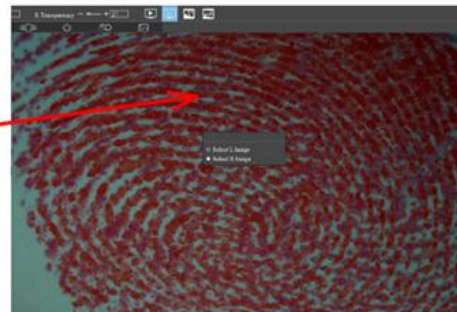
## ► Similarity Comparison Function



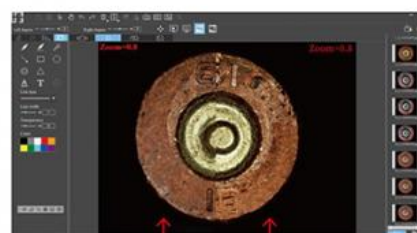
Support retrieve images from local disk to the software for similarity comparison..



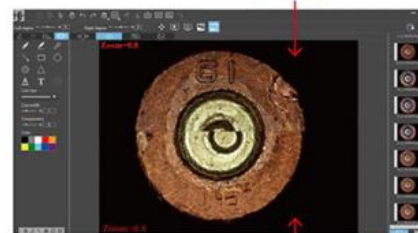
Support click to select individual moving static L or R image for compare similar features.



Click "Vertical Cut"  or "Horizontal Cut"  to cut the layers of two images and pull the split line by mouse to show the similarity of features in the same position.



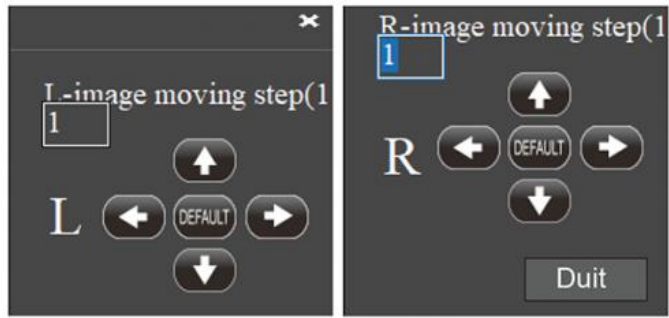
Left Image Right Image



Right Image

Support fine-tuning the position of the L-image/R-image separately

Support moving images to the left/right/up/down Support to restore the default position of the image Support manual setting of movement range (1~5)



### ► Trace Stitching Function



### ► Static Image Editing Function



Supports clockwise or counterclockwise rotation of the selected image, and the angle of single rotation can be set.

## A18.4903 Specification

**OPTO-EDU**

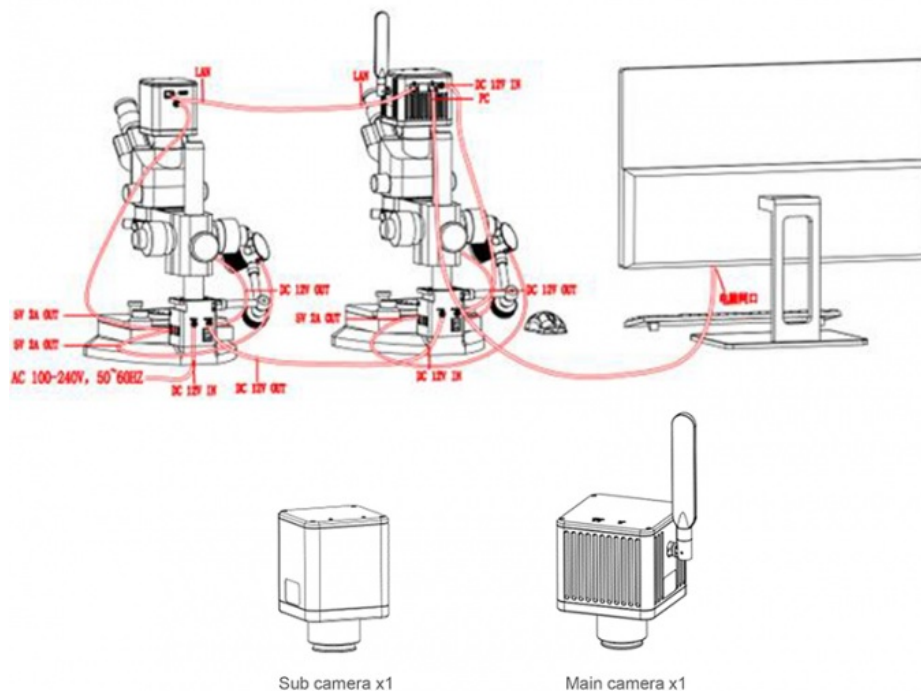
A18.4903 Digital Stereo Comparison Microscope Specification		
Stereo Microscope (2 pcs)		
Microscope	Main Microscope Marked "L", Secondary Microscope Marked "R"	
Working Distance	65-75mm	
Magnification	7x-45x, Optional Eyepiece Extension 7x-125x, Support Continuous Zoom (Freeze)	
Eyepiece Field of View Range	The Diameter of The Field of View at 7x Magnification Is 26mm	
	The Diameter of The Field of View at 45x Magnification Is 4.3mm	
Camera Field of View Range	The Field of View at 0.7x Is 13.3x10mm	
	The Field of View at 4.5x Is 2.14x1.6mm	
Eyepiece	WF10x/20mm, Large Field of View, Wide Angle, High Eye Point	
Observation Tube	45° Tilt, 360° Rotation, Pupil Distance 54-76mm; Bilateral Visual Adjustment (±5); Hinged Trinocular, 50:50 Beam Splitting Ratio	
Objective Lens	0.7x-4.5x Continuous Zoom (Freeze), Objective Zoom Ratio 6.4:1	
Focusing Bracket	Vertical Arm Focus Bracket, Hand Wheel Adjustable, Lift Range 45mm, Fine Tuning Accuracy: 0.002mm	
Base Dimensions	Base Dimensions: 285x238x25mm	
Mobile Stage	Dimension : 180x155x26mm, Moving Range: 25mm (Horizontal), 5mm (Longitudinal), 360° Round Table	
Trinocular Interface	0.63x Optical Adapter (Integrated Design With Camera)	
Camera (2 pcs)		
Physical Resolution	12.0MP, Secondary Camera, Marked "R"	20.0MP, Main Camera, Marked "L"
Output	USB, Lan, HDMI	USB, Lan, WIFI
Image Sensor	SONY IMX412 CMOS	SONY IMX147 CMOS
Exposure Mode	Rolling Shutter	Rolling Shutter
Maximum Resolution	4000x3000 (12,000,000Pixels)	5184x3888 (20,155,392 Pixels)

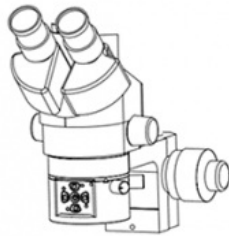


ISO Sensitivity	Equivalent to 100-12800	Equivalent to 100-12800
Sensor Size	1/2.3"	1/2.3"
Pixel Size	1.55μmx1.55μm	1.2μmx1.2μm
Spectral Response	380-650nm	380-650nm
Exposure Capability	Real-time Auto and Manual Adjustment	Real-time Auto and Manual Adjustment
Exposure Time	10μs-333ms	10μs-333ms
White Balance	Real-time Auto and Manual RB Adjustment	Real-time Auto and Manual RB Adjustment
Preview Resolution	4000x3000@30fps,3840x2160@30fps	5184x3888@10fps,3840x2160@15fps
Power Supply	DC 12V 5A	DC 12V 5A
WiFi Protocol	--	5G WiFi IEEE802.11ac
A/D Conversion Bit Depth	12bit	12bit
Software and App	Professional Comparison Software DB Capture for Windows	
Near-coaxial Falling Light (2 pcs)		
Power	3W LED	
Input Voltage	DC 12V	
Dimming Method	0~100% Linear Adjustment	
Center Brightness	≥15000LX(Height 75mm)	
Number of LEDs	24 Small Angle Highlighting Beads	
Color Temperature	5500K~7000K	
Adjustment Method	Button + Knob Control	
4-Zone Diffuse Reflection Ring Light (2 pcs)		
Power	5W LED	
Input Voltage	DC 12V	
Dimming Method	Linear Adjustment	
Center Brightness	≥46000LX(Height 75mm)	
Number of LEDs	72 Small Angle Highlighting Beads	
Color Temperature	5500K~7000K	
Adjustment Method	Button + Knob Control	
6 Colors Oblique Light (2 pcs)		
Power	3W LED	
Input Voltage	DC 5V	
Dimming Method	0~100% Linear Adjustment	
LED Wavelength	Red:620~625 nm	
	Yellow:590~595 nm	
	Green:520~525 nm	
	Blue:460~465 nm	
	Purple:390~400 nm	
	White:6000K	

## A18.4903 Packing List

OPTO-EDU

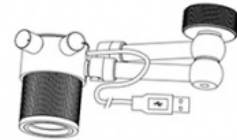




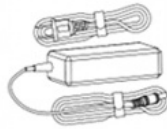
Microscope body x2



Microscope base x2



Six-color oblique illumination x2



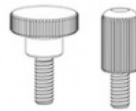
Power adapter x1



Cable(Ethernet cable and USB-DC cable) x2



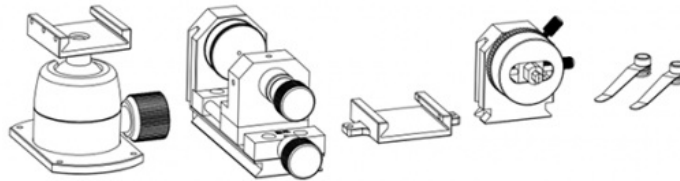
Fixtures box x2



Hand screws x8



Installation tools x2



Fixtures x2

#### Installation Diagram Of The Fixture Combinations



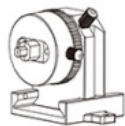
A+C Combination



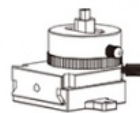
A+C Combination



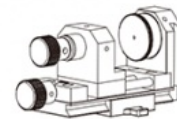
A+D Combination



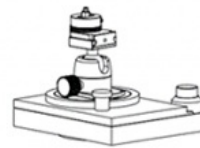
B+C Combination



B+C Combination

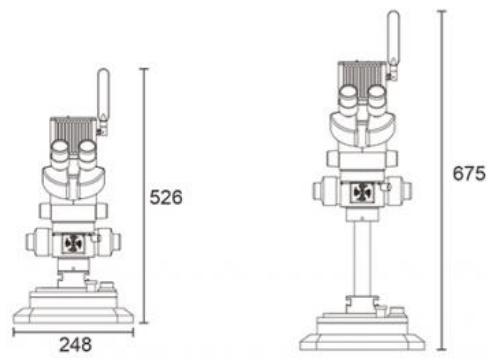


B+D Combination



## A18.4903 Dimensions (Unit: mm)

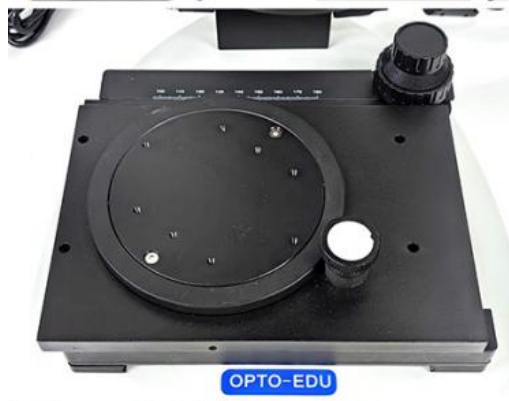
OPTO-EDU



## A18.4903 More Pictures

OPTO-EDU









**Opto-Edu (Beijing) Co., Ltd.**

☎ 0086 13911110627

✉ [sale@optoedu.com](mailto:sale@optoedu.com)

🌐 [cnoec.com](http://cnoec.com)

F-1501 Wanda Plaza, No. 18 Shijingshan Road, Beijing 100043, China