



## OPTO-EDU A59.2223 Hdmi Wifi Sd 1080p Digital Camera 5.0m Mouse Measure

### Our Product Introduction

#### Basic Information

- Place of Origin: China
- Brand Name: CNOEC, OPTO-EDU
- Certification: CE, Rohs
- Model Number: A59.2223
- Minimum Order Quantity: 1 pc
- Price: FOB \$1~1000, Depend on Order Quantity
- Packaging Details: Carton Packing, For Export Transportation
- Delivery Time: 5~20 Days
- Payment Terms: T/T, West Union, Paypal
- Supply Ability: 5000 pcs/ Month



#### Product Specification

- Applications: Microscope
- Certification: CE|Rohs
- USB Mouse: USB Mouse, Or USB WIFI
- SD: SD Card Slot
- LED: Power On Indicator
- ON/OFF: Power On/Off Switch
- HDMI: HDMI Output, Mouse Control & Measure Function
- Highlight: wifi 1080p digital camera,  
sd 1080p digital camera,  
5.0m hdmi digital camera



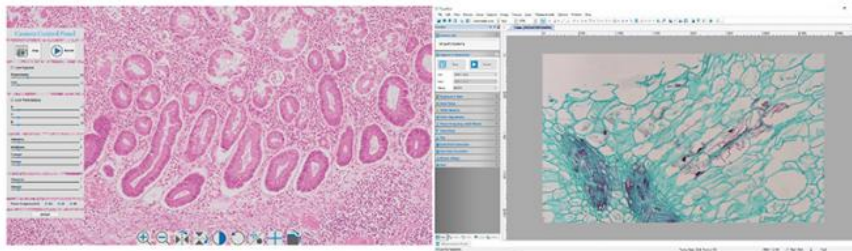
## Product Description

A59.2223 is a multiple interfaces HDMI+WiFi+SD CMOS camera and it adopts ultra-high performance Sony CMOS sensor as the image-picking device. HDMI+WiFi are used as the data transfer interface to HDMI display or computer. For HDMI output, The XCamView will be loaded and a camera control panel and toolbar are overlaid on the HDMI screen, in this case, the USB mouse can be used to set the camera, browse and compare the captured image, play the video etc. For WiFi output, unplug the mouse and plug in the USB WiFi adapter, connect the computer WiFi to the camera, then the video stream can be transfer to computer with the advanced software Image View. With Image View, you can control the camera, process the image as other USB series camera.

- HDMI+WIFI+SD Card Digital Camera With CMOS Sensors Resloution 1080p/5.0M
- Built-in HDMI Mouse Control Panel For Image Capture & Video Record To SD Card
- Built-in Toolbar Including Zoom, Mirror, Comparison, Freeze, Cross, Browser Functions
- Ultra-Fine TM Color Engine With Perfect Color Reproduction Capability (USB)
- Advanced Video & Image Processing Software Image View, Support SDK For Win/Linux/Mac/Android

OPTO-EDU





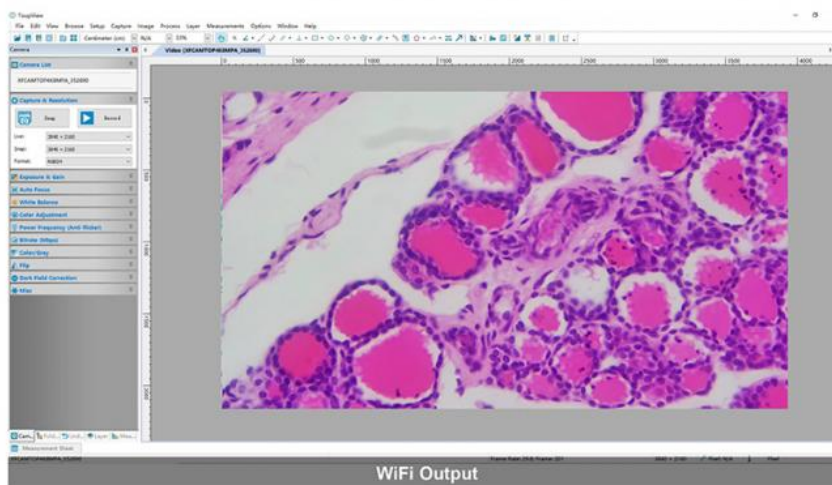
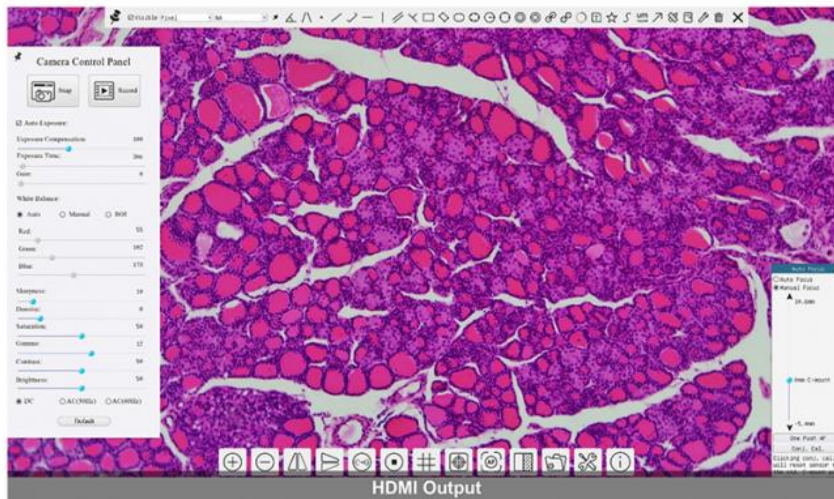
### A59.2223 HDMI+WIFI+SD Digital Camera, 1080p/5.0M, Mouse Measure

A59.2223 is a multiple interfaces HDMI + WiFi + SD CMOS camera and it adopts ultra-high performance Sony CMOS sensor as the image-picking device. HDMI + WiFi are used as the data transfer interface to HDMI display or computer.

For HDMI output, The X Cam View will be loaded and a camera control panel and toolbar are overlaid on the HDMI screen, in this case, the USB mouse can be used to set the camera, browse and compare the captured image, play the video etc.

For WiFi output, unplug the mouse and plug in the USB WiFi adapter, connect the computer WiFi to the camera, then the video stream can be transfer to computer with the advanced software Image View. With Image View, you can control the camera, process the image as other USB series camera.

## A59.2223 Connections Image

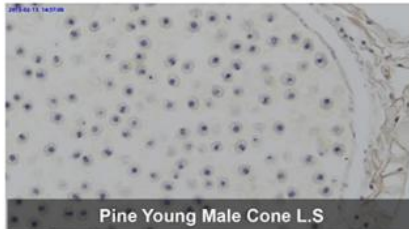




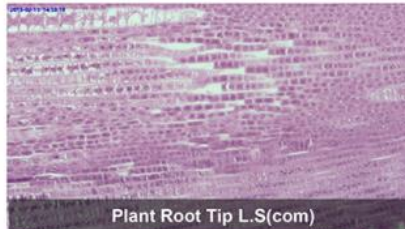
## A59.2223 Features & Sample Pictures



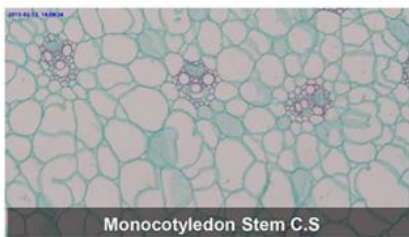
- HDMI+WIFI+SD Card Digital Camera With CMOS Sensors Resloution 1080p/5.0M
- Built-in HDMI Mouse Control Panel For Image Capture & Video Record To SD Card
- Built-in Toolbar Including Zoom, Mirror, Comparison, Freeze, Cross, Browser Functions
- Ultra-Fine TM Color Engine With Perfect Color Reproduction Capability (USB)
- Advanced Video & Image Processing Software Image View, Support SDK For Win/Linux/Mac/Android



Pine Young Male Cone L.S



Plant Root Tip L.S.(com)



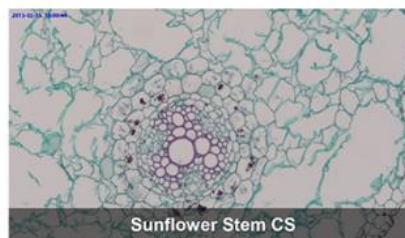
Monocotyledon Stem C.S



Large Intestine Sec

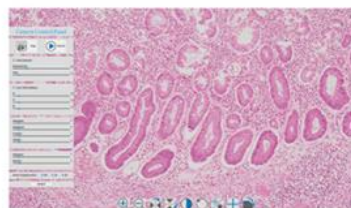


Privet Leaf C.S



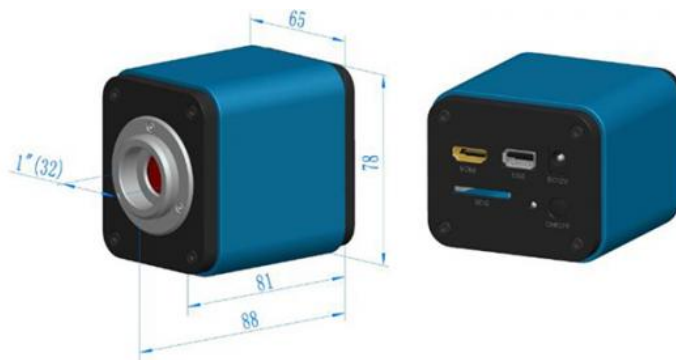
Sunflower Stem CS

## A59.2223 Specification



Cata. No.	Sensor & Size(mm)	Pixel(μm)	G Sensitivity Dark Signal	FPS/Resolution	Binning	Exposure
5MPB	1080P/5M/	2.4x2.4	425 mv with 1/30s	30@1920x1080	1x1	0.03ms~918ms
	Sony IMX178(C)		0.15 mv with 1/30s	(HDMI)		
	1/1.8" (6.22x4.67)			25@1920x1080		
				(WiFi)		
2MPD	1080P/2M/	3.75x3.75	1120 mv with 1/30s	30@1920x1080	1x1	0.06ms~918ms
	Sony IMX185(C)		0.15 mv with 1/30s	(HDMI)		
	1/1.9" (7.20x4.05)			25@1920x1080		
				(WiFi)		
	1080P/2M/		1016 mv with 1/30s	30@1920x1080		

2ME (Stop)	Sony IMX249(C,GS)	5.86x5.86 86	0.15 mv with 1/30s	(HDMI)	1x1	0.043ms~ 1000ms
	1/1.2" (11.25x6.33)			25@1920x1080		
				(WiFi)		
Remark: C - Color, M-Monocolor, GS-GS Shutter						
INTERFACE & BUTTON FUNCTION						
USB	USB Mouse, or USB WIFI					
HDMI	HDMI Output, Mouse Control & Measure Function					
DC12V	12V Power in					
SD	SD Card Slot					
ON/OFF	Power On/Off Switch					
LED	Power On Indicator					
HDMI OUTPUT						
UI Operation	With USB Mouse					
Image Capture	JPEG Format with 5M Resolution (2592*1944) in SD Card(8G) (5MP)					
	JPEG Format with 2M Resolution in SD Card (2MP, 2ME)					
	Global Shutter for 2ME					
Video Record	ASF Format 1080P 30fps in SD Card					
Camera Control Panel	Including Exposure, Gain, White Balance, Color Adjustment, Sharpness and Denoising Control					
Toolbar	Including Zoom, Mirror, Comparison, Freeze, Cross, Browser Function					
WIFI OUTPUT						
UI Operation	Image View on Windows/Linux/OSX/Android Platform					
WiFi Performance	802.11n 150Mbps; RF Power 20dBm(Maximum)					
Maximum Connected Devices	3~6(According to the Environment and Connection Distance)					
White Balance	Auto White Balance					
Color Technique	Ultra-Fine Color Engine (WiFi)					
Capture/Control SDK	Windows/Linux/macOS/Android Multiple Platform SDK(Native C/C++, C#/VB.NET, Python, Java, DirectShow, Twain, etc) (WiFi)					
Recording System	Still Picture or Movie (WiFi)					
SOFTWARE ENVIRONMENT FOR USB2.0						
Operating System	Support Microsoft Windows XP / Vista / 7 / 8 / 10(32 & 64 bit)					
	OS X (Mac OS X),					
	Linux					
PC Requirements	CPU: Equal to Intel Core2 2.8GHz or Higher					
	Memory: 2GB or More					
	USB port: USB2.0 High-speed Port					
	Display: 17" or Larger					
	CD-ROM					
OPERATING ENVIRONMENT						
Operating Temperature	-10 °C~ 50 °C					
Storage Temperature	-20 °C~ 60 °C					
Operating Humidity	30~80%RH					
Storage Humidity	10~60%RH					
Power Supply	DC 12V/2A Adaptor					
Dimension of A59.2223 Series Camera						
A59.2223 HDMI CMOS camera body, made from tough, CNC aluminium alloy, ensures a heavy duty, workhorse solution. The camera is designed with a high quality IR-CUT to protect the camera sensor. No moving parts included. This design ensures a rugged, robust solution with an increased lifespan when compared to other industrial camera solutions.						
Dimension	78 mm (3.07") x 70 mm (2.76") x 92mm (3.62")					



## A59.2223 Packing List



Packing List of A59.2223 Series Camera					
Standard Outfit					
A	Gift box : L:25.5cm W:17.0cm H:19.0cm (1pcs, 1.55Kg/ box)				
B	Digital camera				
C	Power Adaptor: Input: AC 100~240V 50Hz/60Hz, Output: DC 12V 1A				
	American standard: Model: GS12U12-P1I 12W/12V/1A: UL/CUL/BSMI/CB/FCC				
	EMI Standard:EN55022,EN61204-3, EN61000-3-2,-3, FCC Part 152 class B, BSMI CNS14338				
	EMS Standard:EN61000-4-2,3,4,5,6,8,11,EN61204-3,Class A Light Industry Standard				
	European standard: Model:GS12E12-P1I 12W/12V/1A TUV(GS)/CB/CE/ROHS				
	EMI Standard:EN55022,EN61204-3, EN61000-3-2,-3, FCC Part 152 class B, BSMI CNS14338				
C	EMS Standard:EN61000-4-2,3,4,5,6,8,11,EN61204-3,Class A Light Industry Standard				
D	HDMI Cable				
E	USB Mouse				
F	High-speed USB2.0 A male to A male gold-plated connectors cable /2.0m				
F1	Wireless network adapter with USB interface				
G	CD (Driver & utilities software, Ø12cm)				
Optional Accessory					
H	Focus Adjustable Eyepiece Adapter	For Microscope	0.37x, C-Mount to Dia.23.2mm		A55.2202- A37
			0.50x, C-Mount to Dia.23.2mm		A55.2202- A50
			0.75x, C-Mount to Dia.23.2mm		A55.2202- A75
		For Telescope	0.37x, C-Mount to Dia.31.75mm		A55.2204- A37
			0.50x, C-Mount to Dia.31.75mm		A55.2204- A50
			0.75x, C-Mount to Dia.31.75mm		A55.2204- A75
I	Focus Fixed Eyepiece Adapter	For Microscope	0.37x, C-Mount to Dia.23.2mm		A55.2202- F37
			0.50x, C-Mount to Dia.23.2mm		A55.2202- F50
			0.75x, C-Mount to Dia.23.2mm		A55.2202- F75
			0.37x, C-Mount to Dia.31.75mm		A55.2204- F37

		For Telescope	0.50x, C-Mount to Dia.31.75mm		A55.2204- F50
			0.75x, C-Mount to Dia.31.75mm		A55.2204- F75
J	Adaptor Rings Dia.23.2mm to 30.0mm For 30.0mm Microscope Eyepiece Tube				A55.2203- 30
K	Adaptor Rings Dia.23.2mm to 30.5mm For 30.5mm Microscope Eyepiece Tube				A55.2203- 30.5
L	Calibration Stage Micrometer	X=0.01mm/100Div.			
		X,Y=0.01mm/100Div			
		X=0.01mm/100Div., 0.10mm/100Div			
M	SD Card(4G or 8G)				

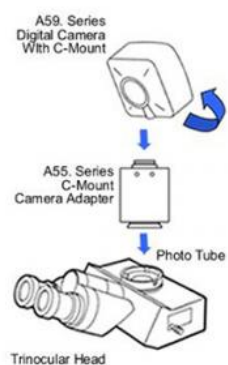
## Camera Connect To Microscope



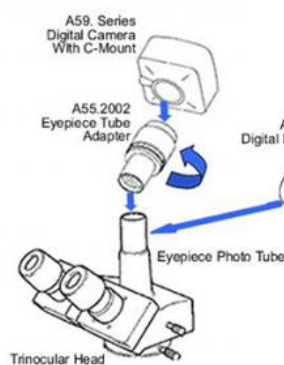
## OPTO-EDU

## How Camera Connect To Microscope

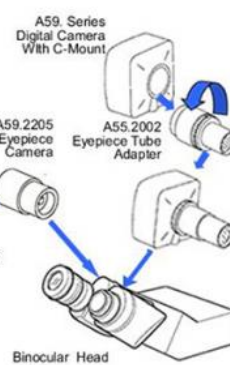
### 1. To Trinocular Microscope On Straight Photo Tube



### 2. To Trinocular Microscope On Eyepiece Photo Tube



### 3. To Binocular Microscope On Eyepiece Tube



Opto-Edu (Beijing) Co., Ltd.

☎ 0086 13911110627

✉ sale@optoedu.com

🌐 cnoec.com

F-1501 Wanda Plaza, No. 18 Shijingshan Road, Beijing 100043, China