



Laboratory Compound Optical Microscope with Infinity Trinocular Head

Our Product Introduction

Basic Information

- Place of Origin: China
- Brand Name: CNOEC, OPTO-EDU
- Certification: CE, Rohs
- Model Number: A12.0908
- Minimum Order Quantity: 1 pc
- Price: FOB \$1~1000, Depend on Order Quantity
- Packaging Details: Carton Packing, For Export Transportation
- Delivery Time: 5~20 Days
- Payment Terms: T/T, West Union, Paypal
- Supply Ability: 5000 pcs/ Month

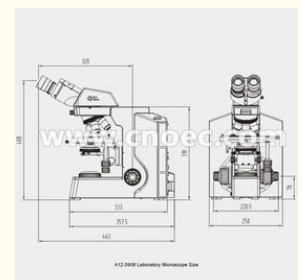


Product Specification

- Highlight: optical compound microscope, wide field microscope



More Images



for more products please visit us on cnoec.com

Product Description

Laboratory Compound Optical Microscope with Infinity Trinocular Head

A12.0908 Laboratory Microscope, newly developed in 2013.

--Infinity Color Corrected Optical System With Newly Upgraded Koehler Illumination System, Presents Clear & Bright Micro-image Under Each Magnification.

--Fire-new Ergonomic Design, Steady System Structure, Easy Operation, Suitable For Various Working Environments.

--**Building Blocks** Design For Combining Multiple Functions, Fluorescence, Phase Contrast, Polarizing, Dark Field Attachments Can Be Assembled On The Basis Of Bright Field Observation.

--Widely Apply To Clinical Diagnosis, Teaching Experiment, Pathological Test And Other Micro-fields.

--Newly Designed Integrative **Y-Shape** Body, All Metal Diecasted Under High Pressure. High stability, No Image Dithering Under High Magnification Observation, Ensures The Test Precision Of Multi-channel Fluorescence Diagnosis.

A12.0908 Specification		A	B
Optical system	Infinity color corrected optical system	•	•
Head	Compensation Trinocular Head		
	30° Inclined, 360° Rotatable, Interpupillary Distance 54-75mm, Diopter +/-5 Adjustable.	•	-
	Compensation Trinocular Head		
	30° Inclined, 360° Rotatable, Interpupillary Distance 54-75mm, Splitting Ratio R:T=100:0 or 0:100, Diopter +/-5 Adjustable.	-	•
Eyepiece	High eye-point wide field plan eyepiece PL10x22mm, reticle can be assembled.		
Objective	Infinity Plan Achromatic Objectives		
	4x ,WD=7.18mm		
	10x,WD=4.70mm		
	20x ,WD=1.75mm		
	40x (Spring),WD=0.72mm		
	100x (Spring, Oil),WD=0.15mm		
Nosepiece	5 Holes revolving nosepiece, inward		
Focusing	Coaxial Focus System With Upper Limited And Tension Adjustment; Coarse Range: 25mm; Fine Precision: 0.002mm; Focus Height Adjustable.		
Stage	Double Layer Mechanical Stage 175x145mm, With Special Fabrication Processing, Anti-corrosive And Anti-friction; X/Y Moving Hand Wheel In Right Or Left Hand; Moving Range 76x50mm, Precision 0.1mm		
Condenser	N.A.1.2/0.22 Swing-out Type Achromatic Condenser		
Light Source	6V/30W Halogen, Pre-centered, Intensity Adjustable.		
Filter	Blue		
Optional Accessories			
Eyepiece	High Eye-point PL10x/22mm with Micrometer, Diopter Adjustable	A51.0905-1022R	
	High Eye-point PL15x/16mm	A51.0903-1516	
Objective	Infinity plan achromatic objectives 2x	A52.0902-2	
Nosepiece	4 Holes revolving nosepiece, inward	A54.0930-BS4	
Phase Contrast Attachment	Infinity Plan Phase Contrast Objectives 10X,WD=4.70mm	A5C.0937-10	
	Infinity Plan Phase Contrast Objectives 20X,WD=1.75mm	A5C.0937-20	
	Infinity Plan Phase Contrast Objectives 40X,WD=0.72mm	A5C.0937-40	
	Infinity Plan Phase Contrast Objectives 100X,WD=0.15mm	A5C.0937-100	
	N.A.1.25 Five Holes Phase Contrast Condenser (Infinity)	A5C.0912-PCI	
	Centering Telescope	A5C.0910-30	
Polarizing Attachment	Polarizer (ø45), Can Be Out Of Light Path.	A5P.0923-P	
	Analyzer 360° Rotatable,Can Be Out Of Light Path.	A5P.0923-A	
	λ Slide	A5P.0923-C1	
	Rotatable Working Stage	A5P.0923-RW	

Dark Field Condenser	N.A.0.9 Dry	A5D.0912-D
	N.A.1.25 Immersion	A5D.0912-W
Reflected Fluorescence System	6-Holes Disc Reflected Fluorescent Illumination	A12.0908 +
	Mercury Lamp House 100W/DC	Fluorescent
	Mercury Lamp Power 100V-240V AC With Indicator Display	Upgrade to A16.0908
	Eye Protecting Board	A12.0908 + Fluorescent + CCD Camera Upgrade to A16.0909
	HBO Ultra Hi-Voltage Spherical Mercury Lamp 100W/DC OSRAM	
	Fluorescence Filter System B	
	Fluorescence Filter System G	A5F.0923-V1
	Fluorescence Filter System UV	
	Fluorescence Filter System V	
Filter	Yellow Filter, Dia.45mm	A56.0935-XYX
	Green Filter, Dia.45mm	A56.0935-XYG
	Neutral Filter, Dia.45mm	A56.0935-XYG
	Attenuation Plate, Transmission 25%	A5F.0925-50R
CCD Adapter	1x C-Mount, Focus Adjustable	A55.0926-10
	0.50x, For 1/2" C-Mount, Focus Adjustable	A55.0926-50
	0.67x, For 2/3" C-Mount, Focus Adjustable	A55.0926-67
Series of Microscope	Metallurgical Microscope	A13.0909
	Polarizing Microscope	A15.0908
	Fluorescence Microscope, APO	A16.0908
	Digital Fluorescence Microscope, APO	A16.0909



A12.0908 Laboratory Microscope



Fire New Designed telecentric kohler illumination system, working with N.A. 1.2/0.22 swing out achromatic condenser, applies to 2x~100x observation.



Double layer mechanical stage 175*145mm, with operating handle in right hand, moving range 76*50mm, double slide holder to compare and analyzing 2 slides comparatively.





Safe Carrying Design

The hole on the back of the body make it safe and easy to carry the microscope anywhere

Screwdriver Placement

To make the the best of available space, placing a screwdriver within touch, improves your working efficiency



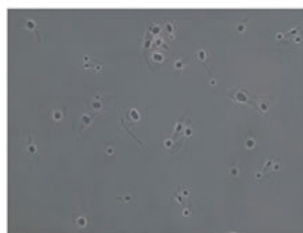
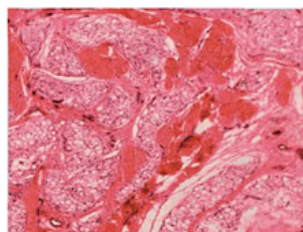
LPlan Series Infinity Plan Achromatic Objectives, designed for observing lab pathology and biological cell slices, present sharp and contrast image, work well even in fluorescence observation



Plan-Ph series Infinity Phase Contrast Objectives, improve clarity and contrast, especially suitable to observe colorless or light-colored cells.



A12.0908 Laboratory Microscope



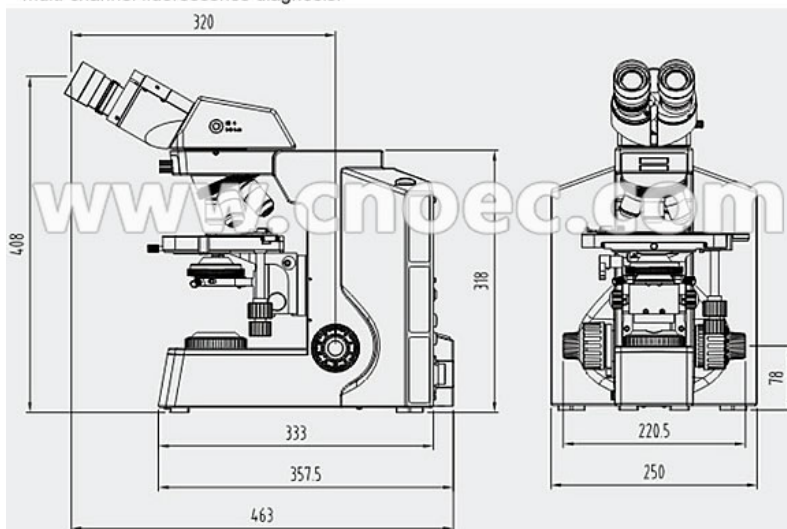
Newly designed integrative Y shape body, all metal diecasted under high pressure, high stability, no image dithering under high magnification observation, ensure the precision of multi-channel fluorescence diagnosis.





A12.0908 Laboratory Microscope

Newly designed integrative Y shape body, all metal diecasted under high pressure, high stability, no image dithering under high magnification observation, ensure the precision of multi-channel fluorescence diagnosis.



A12.0908 Laboratory Microscope System Size



A13.0909

Metallurgical Microscope



A15.0908

Polarizing Microscope



A16.0908

Fluorescence Microscope



A16.0909

Digital Fluorescence
Microscope



Opto-Edu (Beijing) Co., Ltd.



0086 13911110627



sale@optoedu.com



cnoec.com

F-1501 Wanda Plaza, No. 18 Shijingshan Road, Beijing 100043, China