



1000X Industry Trinocular Metallurgical Optical Microscope A13.0201

Our Product Introduction

Basic Information

- Place of Origin: China
- Brand Name: CNOEC, OPTO-EDU
- Certification: CE, Rohs
- Model Number: A13.0201
- Minimum Order Quantity: 1 pc
- Price: FOB \$1~1000, Depend on Order Quantity
- Packaging Details: Carton Packing, For Export Transportation
- Delivery Time: 5~20 Days
- Payment Terms: T/T, West Union, Paypal
- Supply Ability: 5000 pcs/ Month



Product Specification

- Application: Research, Metallurgical
- Certification: CE
- Drawtube: Binocular, Trinocular
- Illumination: Halogen Lamp, LED
- Theory: Metallurgical Optical Microscope
- Highlight: **bright field microscope ,
halogen lamp microscope**



Product Description

1000X Industry Trinocular Metallurgical Optical Microscope A13.0201

This metallurgical microscope is used for identification and analysis of the structures in different metals and alloys, it is the important instrument for researching metallography in metal physics.

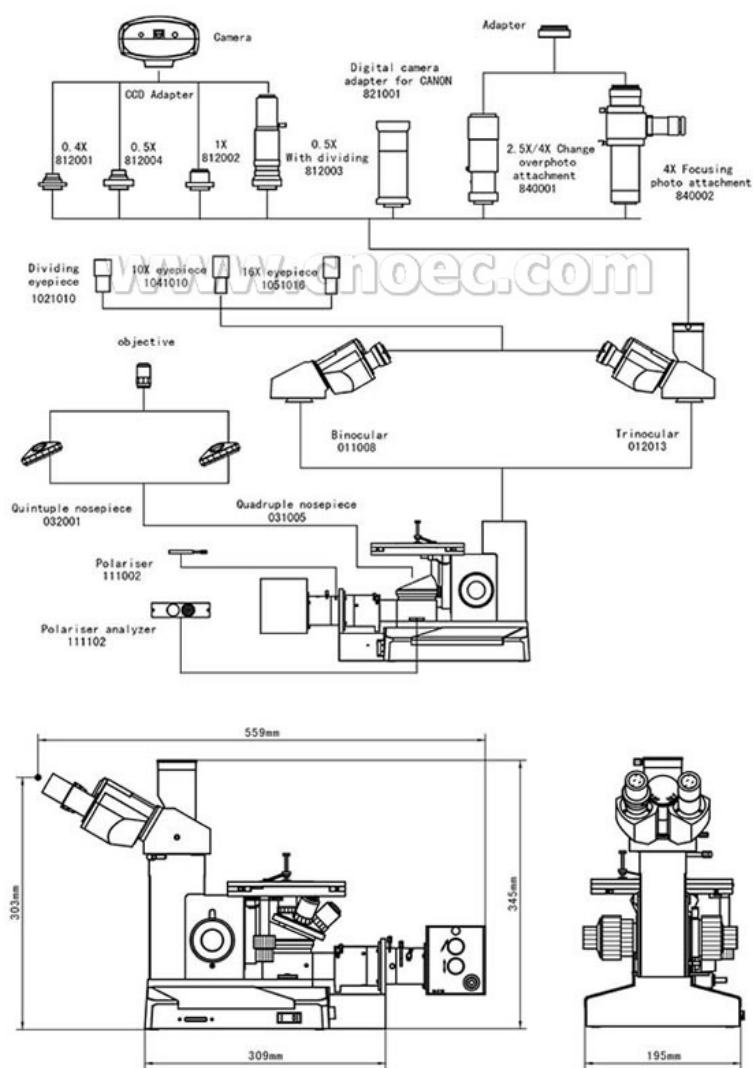
- Plan achromatic objectives with long working distance (no cover glass)
- Coaxial coarse/fine focusing system with tension adjustable and up stop
- 6V 20W halogen lamp with brightness control

pecification	A13.0201-A1	A13.0201-A2	A13.0201-B1	A13.0201-B2
Head	Binocular	Trinocular	Binocular	Trinocular
Eyepiece	WF10X(Φ18mm)			
Objective	LWD Plan (no cover glass) PL 10x/0.25		Achromatic (no cover glass) 10X/0.25	
	LWD Plan (no cover glass) PLL20x/0.40		Achromatic (no cover glass) 20X/0.40	
	LWD Plan (no cover glass) PLL40x/0.60		S-Plan achromatic (no cover glass) SP40X/0.65	
	LWD Plan (no cover glass) PL 100x/1.25 (Spring, oil)		Achromatic (no cover glass) 100X/1.25 (Spring, oil)	
Filter	Frosted filter			
	Blue filter			
	Green filter			
	Yellow filter			
Focus System	Coaxial coarse/fine focus system, with tensional adjustable and up stop, minimum division of fine focusing: 2um			
Nosepiece	Quadruple ball bearing inner locating			
Stage	Double layer mechanical, size 180x150mm, moving range 15x15mm			
Light Source	6V 20W halogen lamp with brightness control			

Optional Accessories		Item No.
Eyepiece	Wide field WF16x/11mm	A51.0203-16A
	Dividing 10x, 0.1mm/Div	A51.0205-10
Objective	Plan long working distance (no cover glass) PL5x/0.12	A5M.0234-05
	Plan long working distance (no cover glass) PLL60x/0.75(Spring)	A5M.0234-60
	Plan long working distance (no cover glass) PLL100x/0.85(Spring)	A5M.0234-100A
	Achromatic (no cover glass) 60x/0.85	A5M.0232-60
	Quintuple (Ball bearing inner locating)	A54.0203-1
Simple	Polarizer	A5P.0210-02
Polarizing	Analyzer	A5P.0211-02
Light Source	LED collector, bright and white light	A56.0204-6
CCD adapter	0.4x	A55.0202-01
	0.5x	A55.0202-04
	1x	A55.0202-02
	0.5x with dividing 0.1mm/Div	A55.0202-03
Photo Adapter	2.5x/4x change over photograph attachment with 10x viewing eyepiece	A55.0201-01
	4x focusing photograph attachment	A55.0201-02
	MD adapter	A55.0201-03
	PK adapter	A55.0201-04
Digital Camera Adapter	For Canon EF digital SLR camera adapter	A55.0204-02



A13.0201



Opto-Edu (Beijing) Co., Ltd.

☎ 0086 13911110627

✉ sale@optoedu.com

🌐 cnoec.com

F-1501 Wanda Plaza, No. 18 Shijingshan Road, Beijing 100043, China