



## Bright Field Jewelry Microscope

### Our Product Introduction

#### Basic Information

- Place of Origin: China
- Brand Name: CNOEC, OPTO-EDU
- Certification: CE, Rohs
- Model Number: A24.0901
- Minimum Order Quantity: 1 pc
- Price: FOB \$1~1000, Depend on Order Quantity
- Packaging Details: Carton Packing, For Export Transportation
- Delivery Time: 5~20 Days
- Payment Terms: T/T, West Union, Paypal
- Supply Ability: 5000 pcs/ Month

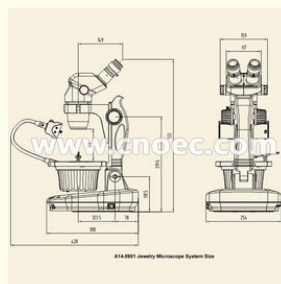


#### Product Specification

- Applications: Research, Diamond, Gems
- Certification: CE, Rohs
- Drawtube: Binocular
- Illumination: Halogen Lamp, LED
- Magnification: 20X
- Theory: Jewelry Microscope
- Highlight: laboratory binocular microscope, gemological microscope



#### More Images



## Product Description

### Description:

A24.0901 Jewelry Microscope 0.67~4.5x, has specially designed according to jewelry work. Fully meet the appraisal needs of all kinds of diamonds, crystals, gems and other jewelries.

- 0.67~4.5x Zoom Lens, with WF10x/22mm Eyepiece,
- Total Optical Magnification 6.7~45x
- Professional Jewelry Microscope Stand, With Base Rotating and Inclination Adjustable
- Bright Field Transmit, Reflect, Polarizing and Dark Field Observation
- Upper Illumination 7W Fluorescent or 1W LED, Transmit Illumination 6V30W Halogen Lamp
- Fully Coated Optical System, Sharp & Clear Image

### Specifications:

A24.0901 Jewelry Microscope, 0.67x-4.5x Specification		
Observation Ways	Bright Field Transmit, Reflect, Polarizing and Dark Field Observation	
Head	Brinocular, 45° Inclined, 360° Rotatable, +/-5° Diopter Adjustable, Interpupillary Adjustment 54~75mm	
Zoom Range	0.67~4.5x	
Zoom Ratio	1:6.7	
Eyepiece	WF10x/22mm, Both with Eye-cup	
Magnification	6.7~45x, Up to 2~225x with Auxiliary Lens	
Working Distance	100mm, With Standard 1x Lens. Up to 26~287mm With Auxiliary Lens	
Gem Clamp	Wire Clamp For Bigger Objects, Flat Clamp For Smaller Objects	
Stand	Professional Jewelry Microscope Stand, With Base Rotating and Inclination Adjustable, with Built-in Dark Field, Polarizing Device	
Illumination	Upper Illumination 7W Fluorescent or 1W LED Transmit Illumination 6V30W Halogen Lam	
A24.0901 Jewelry Microscope, 0.67x-4.5x Optional Accessories		
Eyepiece	WF15x/15mm	A51.0923-15
	WF20x/10mm	A51.0923-20
	WF25x/9mm	A51.0923-25
Auxiliary Lens	0.3x, W.D. 287mm	A52.0928-03
	0.4x, W.D. 217mm	A52.0928-04
	0.5x, W.D. 177mm	A52.0928-05
	0.75x, W.D. 117mm	A52.0928-75
	1.5x, W.D. 47mm	A52.0928-15
	2.0x, W.D. 26mm	A52.0928-20





WF10x/22mm High Point, Diopter Adjustable Eyepiece



Auxiliary Lens 0.5x, 0.75x, 1.0x, 1.5x, 2.0x

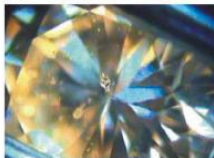


Polarizer and Analyzer



Gem Clamp

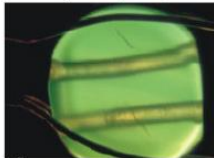
**A24.0901**, Supply 4 Kinds of Observation Way To Identify Full Range of Jewelry



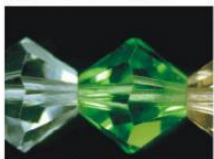
Transmit Bright Field, Diamond



Reflect Bright Field, Blood Stone



Polarization, Jade Orthogonal



Dark Field, Crystal



**A24.0901**  
**Jewelry Microscope**



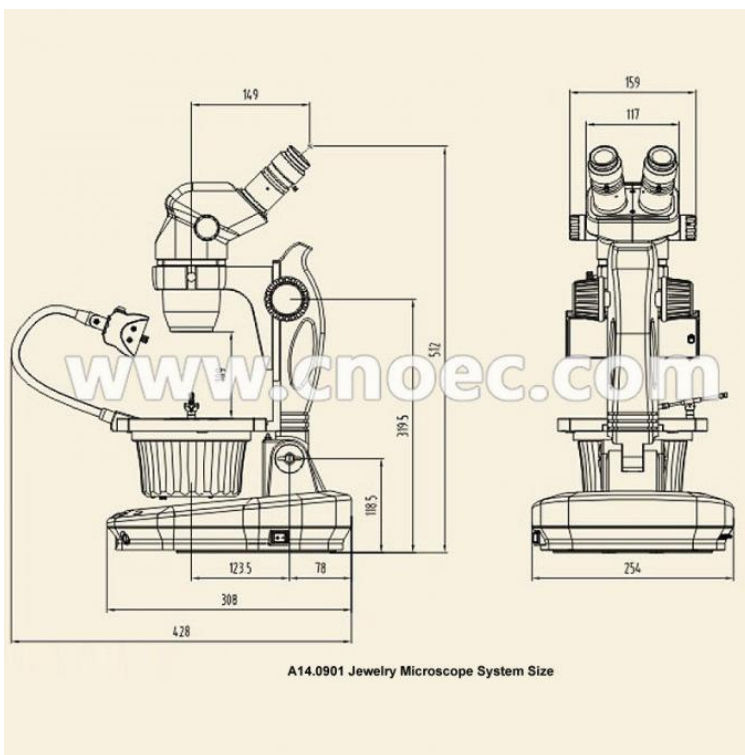
Transmit Illumination 6V30W Halogen Bulb Built-in Stage, Brightness Adjustable, with Dark Field Device and Bulb Replacement Device



Upper Illumination 1W LED



Upper Illumination 7W Fluorescent



A14.0901 Jewelry Microscope System Size



**Opto-Edu (Beijing) Co., Ltd.**

☎ 0086 13911110627

✉ sale@optoedu.com

🌐 cnoec.com

F-1501 Wanda Plaza, No. 18 Shijingshan Road, Beijing 100043, China