

## USB 2.0 Digital Camera Microscope Microscope Accessories A59.2208

Our Product Introduction

for more products please visit us on [cnoec.com](http://cnoec.com)

### Basic Information

- Place of Origin: China
- Brand Name: CNOEC, OPTO-EDU
- Certification: CE, Rohs
- Model Number: A59.2208
- Minimum Order Quantity: 1 pc
- Price: FOB \$1~1000, Depend on Order Quantity
- Packaging Details: Carton Packing, For Export Transportation
- Delivery Time: 5~20 Days
- Payment Terms: T/T, West Union, Paypal
- Supply Ability: 5000 pcs/ Month

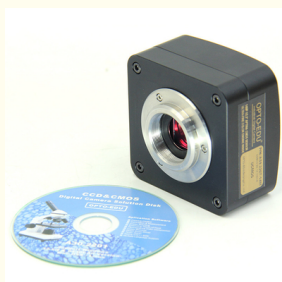


### Product Specification

- Applications: Microscope
- Certification: CE
- Output: USB 2.0
- Product Name: Microscope Accessories
- Resolution: 2592\*1944
- Senser: CMOS
- Highlight: microscope accessory, parts of the microscope



### More Images



## Product Description



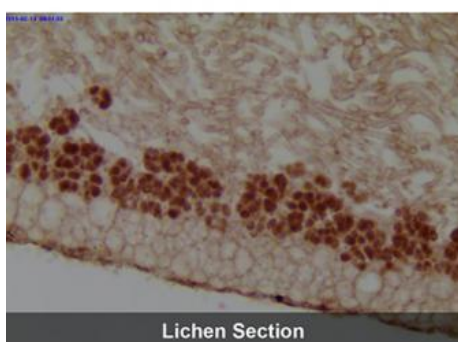
### A59.2208-E USB2.0 CMOS Digital Camera

A59.2208-E adopt SONY Exmor CMOS sensor as the image-picking device and USB2.0 is used as the data transfer interface.

A59.2208-E hardware resolutions range from 1.2M to 8.3M and come with the integrated CNC aluminum alloy compact housing.

A59.2208-E comes with advanced video & image processing application ToupView; Providing Windows/Linux/macOS/Android multiple platform SDK(Native C/C++, C#/VB.NET, Python, Java, DirectShow, Twain, etc);

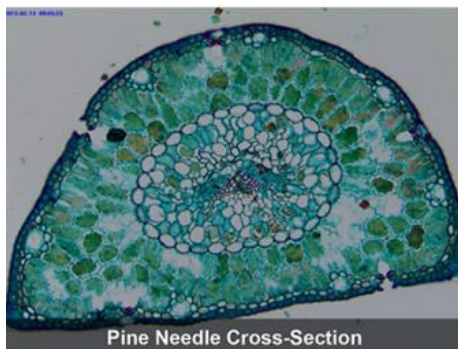
The A59.2208-E can be widely used in bright field light environment and microscope image capture and analysis with higher frame rate.



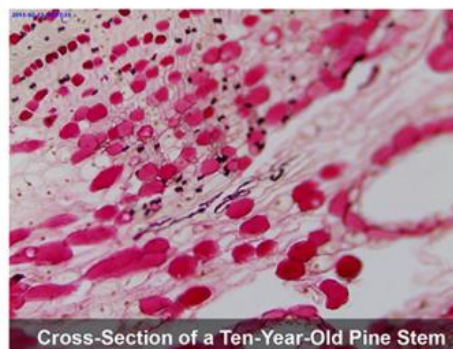
Lichen Section



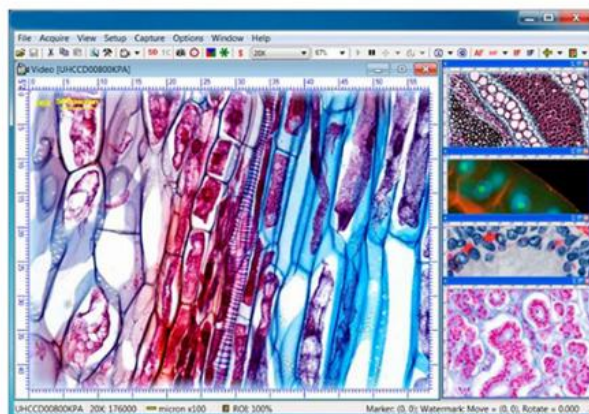
Fern Leaf Cross-Section



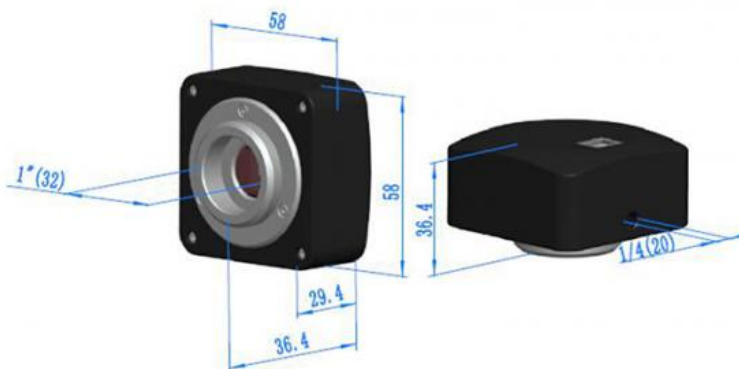
Pine Needle Cross-Section



Cross-Section of a Ten-Year-Old Pine Stem



Order Code	Sensor & Size(mm)	Pixel(μm)	G Sensitivity Dark Signal	FPS/Resolution	Binning	Exposure
8.3MPA	8.3M/IMX274@ 1/2.5"(6.22x3.50)	1.62x1.62	236mv with 1/30s 0.1mv with 1/30s	4@3840x2160 16@1920x1080	1x1 2x2	0.244ms~15s
6.6MPA	6.6M/IMX326@ 1/2.9"(4.98x3.50)	1.62x1.62	236mv with 1/30s 0.1mv with 1/30s	5@3072x2160 6@2592x1944 6@3072x1728 7@2160x2160	1x1 1x1 1x1 1x1	0.244ms~15s
5.3MPA	5.3M/IMX178@ 1/1.9"(7.37x4.15)	2.4x2.4	425mv with 1/30s 0.15mv with 1/30s	5.5@3072 x1728 35@1280x720	1x1 2x2	0.105ms~15s
5.0MPA	5.0M/IMX335@ 1/2.8"(5.18x3.89)	2.0x2.0	505mv with 1/30s 0.13mv with 1/30s	6.4@2592 x1944 26.7@1296x972	1x1 2x2	0.1ms~15s
3.1MPA	3.1M/IMX123@ 1/2.8"(5.12x3.84)	2.5x2.5	600mv with 1/30s 0.15mv with 1/30s	11.5@2048x1536 18.3@1920x1080 18.1@1600x1200 29.5@1024x768	1x1 1x1 1x1 2x2	0.105ms~15s
2.0MPA	2.0M/IMX290@ 1/2.8"(5.56x3.13)	2.9 x2.9	1300mv with 1/30s 0.15mv with 1/30s	17@1920x1080	1x1	0.105ms~15s
1.2MPA	1.2M/IMX224@ 1/3"(4.80x3.60)	3.75 x3.75	2040mv with 1/30s 0.15mv with 1/30s	27@1280x960 54@640x480	1x1 2x2	0.105ms~15s



Other Specification	
Spectral Range	380-650nm (with IR-cut Filter)
White Balance	ROI White Balance/ Manual Temp Tint Adjustment/NA for Monochromatic Sensor
Color Technique	Ultra-Fine Color Engine/NA for Monochromatic Sensor
Capture/Control SDK	Windows/Linux/macOS/Android Multiple Platform SDK(Native C/C++, C#/VB.NET, Python, Java, DirectShow, Twain, etc)
ADC	8 Bit
Recording System	Still Picture and Movie
Cooling System*	Natural
Operating Environment	
Operating Temperature(in Centidegree)	-10~ 50
Storage Temperature(in Centidegree)	-20~ 60
Operating Humidity	30~80%RH
Storage Humidity	10~60%RH
Power Supply	DC 5V over PC USB Port
Software Environment	
Operating System	Microsoft® Windows® XP / Vista / 7 / 8 / 10 / 11 (32 & 64 bit) OSx(Mac OS X) Linux

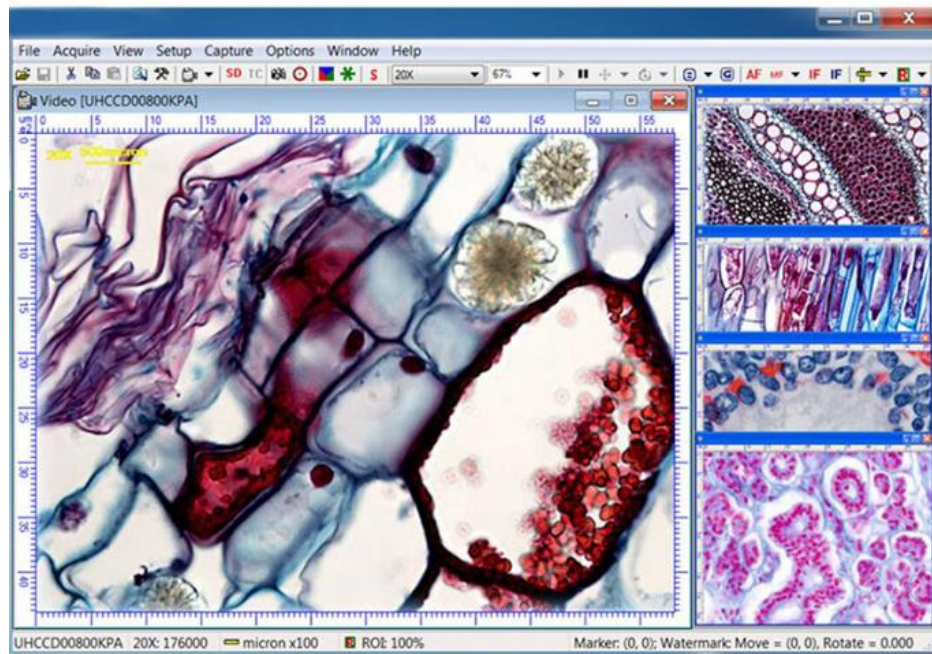
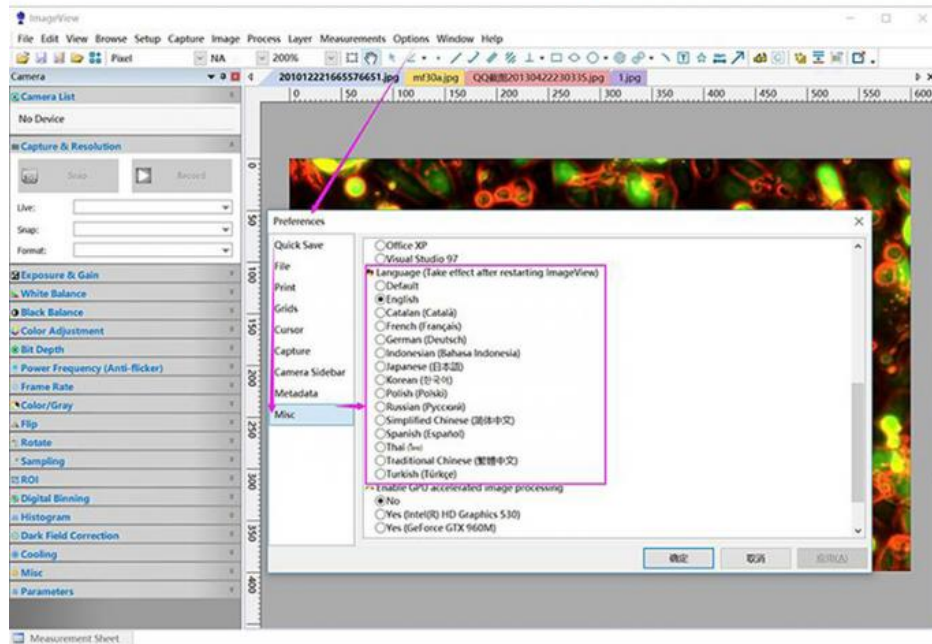


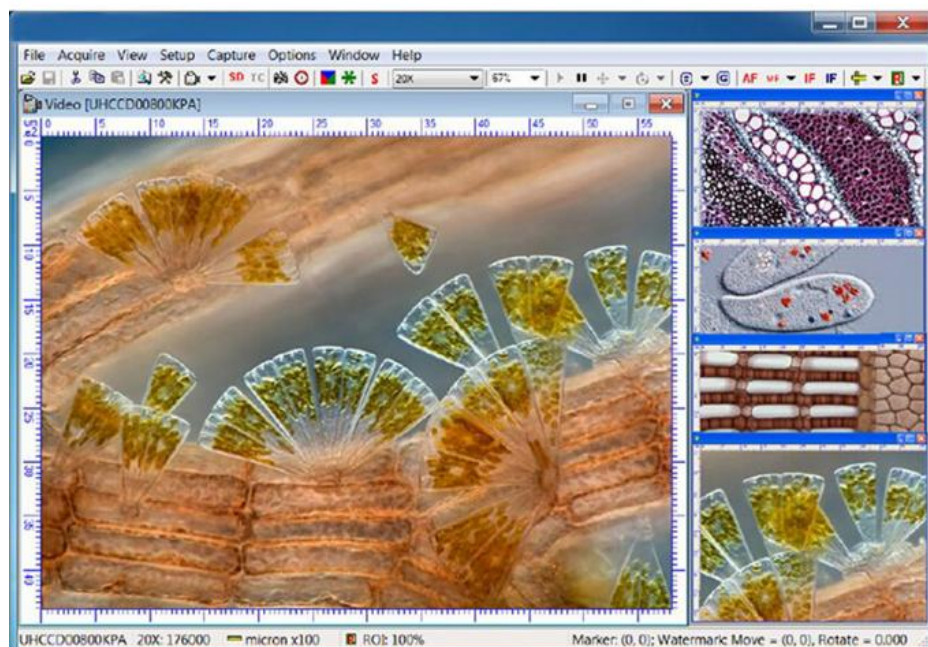
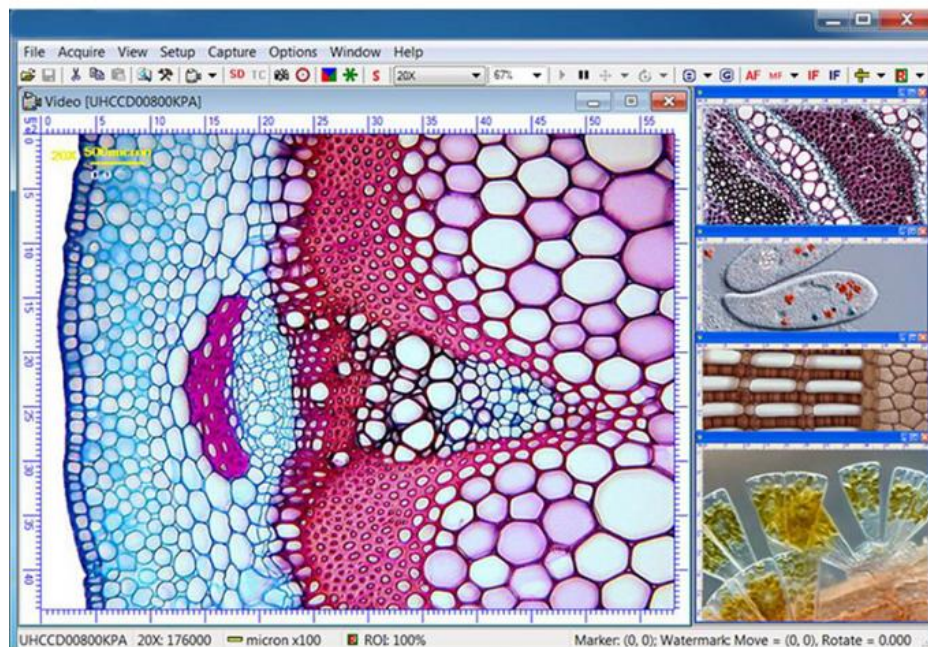
## PC Requirements

CPU: Equal to Intel Core2 2.8GHz or Higher  
Memory: 2GB or More  
USB Port: USB2.0 Port  
Display: 17" or Larger  
CD-ROM

## Image View Software for Windows

**OPTO-EDU**





## A59.2208-E Packing List

**OPTO-EDU**



### Standard Camera Packing List

A	Carton L:52cm W:32cm H:33cm (20pcs, 12~17Kg/ carton), not shown in the photo
B	Gift box L:15cm W:15cm H:10cm (0.5~0.55Kg/ box)
C	One CMOS series camera
D	High-speed USB2.0 A male to B male gold-plated connectors cable /2.0m
E	CD (Driver & utilities software, Ø12cm)



Optional Accessory			
F	Adjustable lens adapter	C-mount to Dia.23.2mm eyepiece tube (Please choose 1 of them for your microscope)	108001/AMA037 108002/AMA050 108003/AMA075
		C-mount to Dia.31.75mm eyepiece tube (Please choose 1 of them for your telescope)	108008/ATA037 108009/ATA050 108010/ATA075
G	Fixed lens adapter	C-mount to Dia.23.2mm eyepiece tube (Please choose 1 of them for your microscope)	108005/FMA037 108006/FMA050 108007/FMA075
		C-Mount to Dia.31.75mm eyepiece tube (Please choose 1 of them for your telescope)	108011/FTA037 108012/FTA050 108013/FTA075
Note: For F and G optional items, please specify your Camera type(C-mount, microscope camera or telescope camera) , ToupTek engineer will help you to determine the right microscope or telescope camera adapter for your application;			
H	108015(Dia.23.2mm to 30.0mm ring)/Adapter rings for 30mm eyepiece tube		
I	108016(Dia.23.2mm to 30.5mm ring)/ Adapter rings for 30.5mm eyepiece tube		
J	108017(Dia.23.2mm to 31.75mm Ring)/ Adapter rings for 31.75mm eyepiece tube		
K	Calibration kit	106011/TS-M1(X=0.01mm/100Div.); 106012/TS-M2(X,Y=0.01mm/100Div.);106012/TS-M2(X,Y=0.01mm/100Div.); 106013/TS-M7(X=0.01mm/100Div., 0.10mm/100Div.)	

## Camera Connect To Microscope

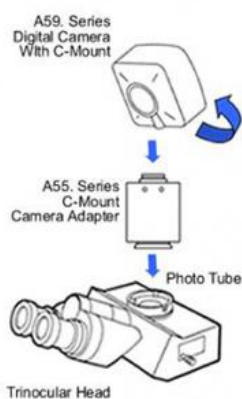
**OPTO-EDU**



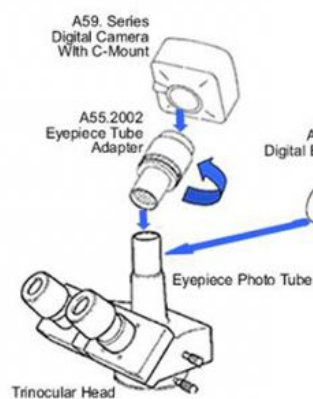
**OPTO-EDU**

## How Camera Connect To Microscope

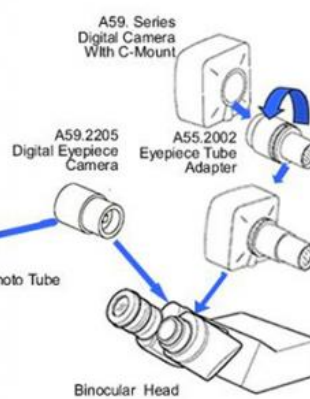
### 1. To Trinocular Microscope On Straight Photo Tube



### 2. To Trinocular Microscope On Eyepiece Photo Tube



### 3. To Binocular Microscope On Eyepiece Tube





0086 13911110627



sale@optoedu.com



cnoec.com

F-1501 Wanda Plaza, No. 18 Shijingshan Road, Beijing 100043, China