



## USB Digital Fluorescence Microscope Laboratory A16.0909

### Basic Information

- Place of Origin: China
- Brand Name: CNOEC, OPTO-EDU
- Certification: CE, Rohs
- Model Number: A16.0909
- Minimum Order Quantity: 1 pc
- Price: Negotiation
- Packaging Details: Carton Packing, For Export Transportation
- Delivery Time: 5~20 Days
- Payment Terms: T/T, West Union, Paypal
- Supply Ability: 5000 pcs/ Month



### Product Specification

- Application: Research, Laboratory
- Certification: CE, Rohs
- Drawtube: Binocular, Trinocular
- Illumination: LED
- Magnification: 40x - 1000x
- Theory: Fluorescence Microscope
- Highlight: **epi-fluorescence microscope,**  
**inverted fluorescence microscope**



### More Images



Our Product Introduction

for more products please visit us on [cnoec.com](http://cnoec.com)

## Product Description

### Description:

- 5.0M Camera Built-in Digital Head, USB2.0 Output
- Infinity color corrected optical system, new upgraded Koehler illumination system, presents a clear & bright micro-image under each magnification.
- Fire-new ergonomic design, steady system structure, easy operation, is suitable for various working environments.
- "Building blocks" design for combining multiple functions, fluorescence, phase contrast, polarizing, dark field attachments can be assembled on the basis of bright field observation.
- Widely apply to clinical diagnosis, teaching experiment, pathological test and other micro-fields.

### Specifications:

A16.0909 Digital Fluorescence Microscope, APO Specification		
Optical system	Infinity color corrected optical system	
Digital Camera	5.0M, COMS Digital Camera, USB2.0 output.	
Head	Compensation trinocular head, 30 inclined, 360 rotatable, interpupillary distance 54-75mm;splitting ratio R:T=100:0 or 0:100; diopter +/-5 adjustable.	
Eyepiece	High eye-point wide field plan eyepiece PL10x22mm, reticle can be assembled.	
Objective	Infinity plan semi-apochromatic fluorescence objectives	4x/0.13, WD=15.13mm
		10x/0.3, WD=8.53mm
		20x/0.5, WD=2.33mm
		40x/0.75 (Spring), WD=0.55mm
Objective	Infinity plan semi-apochromatic fluorescence objectives	100x /1.3(Spring, Oil ), WD=0.21mm
Nosepiece	5 Holes revolving nosepiece, inward	
Focusing	Coaxial focus system with upper limited and tension adjustment; coarse range: 25mm; fine precision: 0.002mm; focus height adjustable.	
Stage	175x145mm double layer mechanical stage, rotatable; with special fabrication processing, anti-corrosive and anti-friction; X,Y moving hand wheel in right or left hand; moving range: 76x50mm, precision : 0.1mm.	
Condenser	N.A. 1.2/0.22 swing-out type achromatic condenser	
Light Source	6V/30W halogen, pre-centered, intensity adjustable.	
Filter	Blue Filter	
	Attenuation Plate, Transmission 25%	
Photo Eyepiece	PK Mount or MD Mount with 3.2X Eyepiece tube	
Reflected Fluorescence System	6-hole reflected fluorescent illumination	
	Mercury lamp 100W/DC	
	Mercury lamp house 100W/DC	
	Mercury lamp power	
	Eye Protecting Board	
	Fluorescence filter system B	
Reflected Fluorescence System	Fluorescence filter system G	
	Fluorescence filter system U	
	Fluorescence filter system V	
Software	1.4M,,2/3" cool CCD,refrigeration -20,standard fluorescent analysis software.	
Oil	immersion oil without fluorescent 30ml	
Optional Accessories		
Eyepiece	High eye-point PL10x/22mm with micrometer, diopter adjustable	A51.0905-1022R
	High eye-point PL15x/16mm	A51.0903-1516
Objective	Infinity plan achromatic objectives 2x	A52.0902-2
Nosepiece	4 Holes revolving nosepiece, inward	A54.0930-BS4
Phase Contrast Attachment	Infinity plan phase contrast objectives 10X,WD=4.70mm	A5C.0901
	Infinity plan phase contrast objectives 20X,WD=1.75mm	
	Infinity plan phase contrast objectives 40X,WD=0.72mm	
	Infinity plan phase contrast objectives 100X,WD=0.15mm	
	N.A.1.25 five holes phase contrast condenser(Infinity)	
	Centering Telescope	

	Filter	
Polarizing Attachment	Polarizer	A5P.0913-P
	Analyzer 360 rotatable;	A5P.0913-A
	Slide	A5P.0913-C1
	Rotatable Working Stage	A5P.0913-RW
	Polarizer and analyzer can be out of light path.	
Dark Field Condenser	N.A.0.9 Dry	A5D.0913-D
	N.A.1.25 Immersion	A5D.0913-W
CCD adapter	1x C-Mount, Focus Adjustable	A55.0926-10
	0.50x, For 1/2 C-Mount, Focus Adjustable	A55.0926-50
	0.67x, For 2/3 C-Mount, Focus Adjustable	A55.0926-67





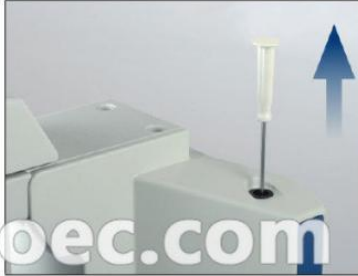
Fire New Designed telecentric kohler illumination system, working with N.A.1.2/0.22 swing out achromatic condenser, applies to 2x-100x observation.



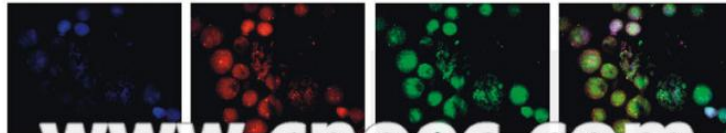
Double layer mechanical stage 175\*145mm, with operating handle in right hand, moving range 76\*50mm, double slide holder to compare and analyzing 2 slides comparatively.



**Safe Carrying Design**  
The hole on the back of the body make it safe and easy to carry the microscope anywhere



**Screwdriver Placement**  
To make the the best of available space, placing a screwdriver within touch, improves your working efficiency



**A16.0908 Laboratory Fluorescence Microscope**  
Plan Fluor series infinity plan semi-apochromatic objectives, is the best choice for the fluorescence observation. Adopting crystal optics materials, perfectly corrects all kinds of chromatic aberrations. Large numerical aperture design presents high resolutions. Large numerical aperture design presents higher resolution, high contrast micro-images. In fluorescence observation, The image is clear and bright while the background is pure black, prominent in ultraviolet fluorescence.



Opto-Edu (Beijing) Co., Ltd.

☎ 0086 13911110627

✉ sale@optoedu.com

🌐 cnoec.com

F-1501 Wanda Plaza, No. 18 Shijingshan Road, Beijing 100043, China