



OPTO-EDU 3.2x - 192x Binocular Forensic Comparison Microscope with LED Illumination for Student and School Applications

Our Product Introduction

for more products please visit us on cnoec.com

Basic Information

- Place of Origin: China
- Brand Name: CNOEC, OPTO-EDU
- Certification: CE, Rohs
- Model Number: A18.1825
- Minimum Order Quantity: 1 pc
- Price: FOB \$1~1000, Depend on Order Quantity
- Packaging Details: Carton Packing, For Export Transportation
- Delivery Time: 5~20 Days
- Payment Terms: T/T, West Union, Paypal
- Supply Ability: 5000 pcs/ Month

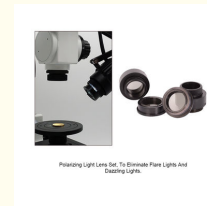


Product Specification

- Applications: Student|school
- Certification: CE|Rohs
- Drawtube: Binocular
- Illumination: LED
- Magnification: 3.2x - 192x
- Theory: Comparison Microscope
- Highlight: **binocular optical microscope, bullet comparison microscope**



More Images



Product Description

OPTO-EDU 3.2x - 192x Binocular LED Bullet Forensic Comparison Microscope A18.1825

Forensic Comparison Microscope

The A18.1825 comparison microscope, newly developed in 2013, is designed for forensic ballistics applications and education. This instrument provides students and professionals with a complete comparison microscope system at a competitive price point, featuring steady quality and full functionality.

Key Features

- **Total Magnification:** 3.8x~230x
- **Optical System:** Wide Field Eyepiece WF10x/22mm, WF20x/12mm with High Eyepoint
- **Zoom Objective:** 5 Step Zoom Plan Objective (0.8x, 1.25x, 2x, 3.2x, 4.8x)
- **Auxiliary Lenses:** Includes 0.4x and 2.0x lenses
- **Comparison Modes:** Full left/right, split-image or overlapping image comparison
- **Advanced Systems:** Magnification Correcting System with Correcting Lens
- **Adjustment:** Separation Line Adjusting System with special metal adjust driver
- **Dual Lighting:** 12V50W fan-cooled halogen light and 5W LED cold light, both adjustable

Our Product Introduction

for more products please visit us on cnoec.com

- **Control Panel:** Touch panel switch for separate or combined light source control
- **Comprehensive Accessories:** Includes coaxial light, polarizing light, UV lens, and color filters
- **Power:** 80-240V wide range voltage



OPTO-EDU (BEIJING) CO., LTD.

OPTO-EDU

F-1501 Wanda Plaza, No.18 Shijingshan Road, Beijing 100043, China
Tel:+8610 88696020 Fax:+8610 88696085

A18.1825 Digital Forensic Comparison Microscope



Product Details

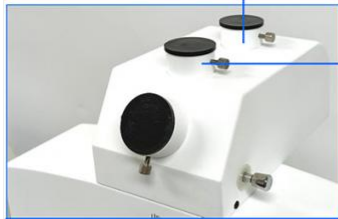


Large Binocular Head
both eyepiece tube diopter \pm 5 adjustable, with WF 10X/22mm eyepiece high eyepoint

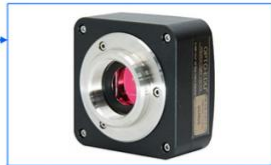


Magnification Switch
5 step zoom plan objective: 0.8x, 1.25x, 2x, 3.2x, 4.8x





Special Designed Dual Photo Port:
--Back For C-Mount + Digital Camera,
--Front For Canon SLR Adapter, For LCD Digital Camera



Digital Camera On Back Port



Canon SLR Camera On Front Port



LCD Digital Camera On Front Port



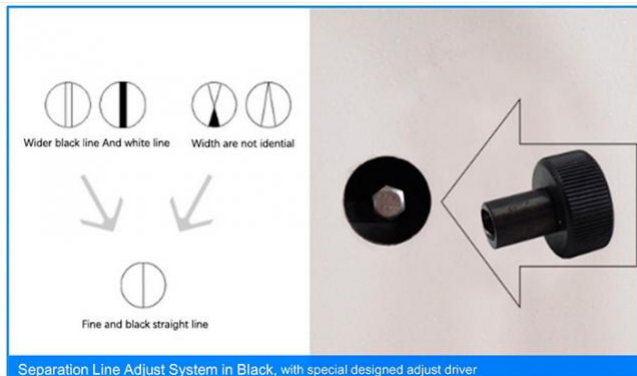
① C-Mount + Digital Camera
② Canon SLR Adapter
③ C-Mount + Digital Camera + LCD Digital Camera



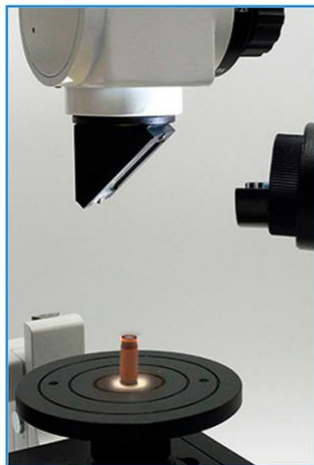
Ultraviolet Light Lens



Filters: Red, Blue, Yellow, Green



Separation Line Adjust System in Black, with special designed adjust driver



Coaxial Light Attachment
to get vertical light path for watching inside deep hole
bottom



Polarizing Light Lens Set
To eliminate flare lights and dazzling lights



Eyeiece WF 10x/22mm and WF 20x/12mm, high eyepoint, each 2 pcs included



Auxiliary Lens 0.4x and 2x, each 2 pcs included



Accessories Packed in Strong Aluminum Box

Aluminum Box Package



Product Specification

Mag./Viewfield	Eyepiece		Eyepiece10X	Eyepiece20X	Photo Adapter	Video Adapter	Working Distance
	Objective	Bridge Body					
0.8X	1.2X	9.6X/φ28	19.2X/φ17	2.5X	0.5X	101mm	
1.25X		15X/φ18	19.2X/φ17				
2X		24X/φ11	48X/φ7				
3.2X		36X/φ7	77X/φ4.5				
4.8X		58X/φ4.2	115X/φ2.3				

Total Magnification with 0.8x objective, auxiliary lens 0.4x, WF10x eyepiece, magnification = 0.8*0.4*10*1.2=3.8x

Technical Specifications

Specification	Details
Magnification	3.8x~230x
Head	Binocular Head, 30° Incline, Interpupillary Distance 48~75mm, Diopter +/-5 Adjustable
Eyepiece	WF10x/22mm, High Eyepoint WF20x/12mm, High Eyepoint
Objective	5 Step Zoom Plan Objective 0.8x, 1.25x, 2x, 3.2x, 4.8x Auxiliary Lens 0.4x, 2.0x
Working Distance	101mm
View Field	Dia. 2.3~62mm
Magnification Correcting	Magnification Correction System, With Correcting Lens
Separation Line Adjusting	Separation Line Adjust System In Back, With Special Designed Adjust Driver
Working Stage	Square Manual Working Stage 90*90mm, Moving Range 54*54*54mm Round Titable Working Stage Dia. 90mm, 0-45° Inclined, 360° Rotatable Joint Left/Right Moving Range 54mm, Joint Up/Down Range 60mm
Light Source	12V50W Fan Cooling Strong Halogen Light (2pcs) 5W LED Cold Light (2pcs) Coaxial Light Lens (2pcs) Polarizing Light Lens (2pcs) Ultraviolet Light Lens (2pcs) Filters: Red, Blue, Yellow, Green (2pcs each)
Adapter	0.5x CCD Adapter For Digital Camera (1pc) Front View Photo Adapter 2.5X For SLR Digital Camera (Nikon And Canon)
Power	80~240V Wide Range Voltage
Bullet Holder	Standard Bullet Holder 2 Sets
Dimension	Instrument Size 37*30*63cm

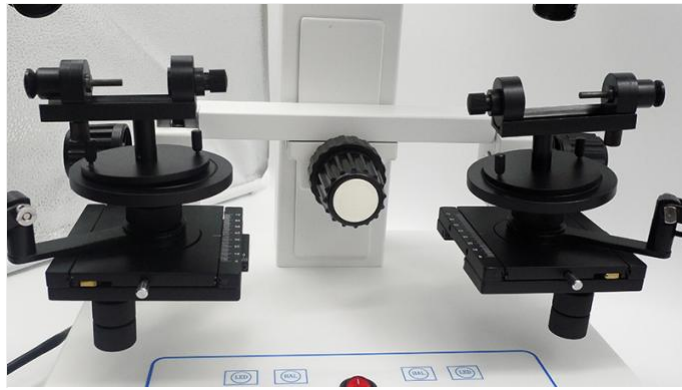
Optional Accessories

Accessory	Details
Light Source	150W Cold Light Source, With Optical Fiber & Light Collector (A56.1821)
Bullet Holder	Motorized Bullet Holder 1 Set (A54.1813)
LCD Pad Digital Camera	9.7" LCD Pad Digital Camera, Android System (A59.3520)

More Pictures

OPTO-EDU





Opto-Edu (Beijing) Co., Ltd.

☎ 0086 13911110627

✉ sale@optoedu.com

🌐 cnoec.com

F-1501 Wanda Plaza, No. 18 Shijingshan Road, Beijing 100043, China