



Forensic Comparison Microscope with 3.2x~230x Magnification 10.5" LCD Pad and 4K Digital Camera

Our Product Introduction

for more products please visit us on cnoec.com

Basic Information

- Place of Origin: China
- Brand Name: CNOEC, OPTO-EDU
- Certification: CE, Rohs
- Model Number: A18.1825-LCD
- Minimum Order Quantity: 1 pc
- Price: FOB \$1~1000, Depend on Order Quantity
- Packaging Details: Carton Packing, For Export Transportation
- Delivery Time: 5~20 Days
- Payment Terms: T/T, West Union, Paypal
- Supply Ability: 5000 pcs/ Month



Product Specification

- Applications: Student|school|Research|Educational
- Certification: CE|Rohs
- Drawtube: Binocular
- Illumination: LED
- Magnification: 3.2x~230x
- Theory: Comparison Microscope
- Highlight: transmitted light microscope, binocular optical microscope



Magnification Switch For 5 Step Zoom Plan Objective 0.8X, 1.25X, 2X, 3.2X, 6.8X

More Images



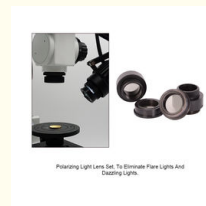
Bullet Holder Set To Hold & View All Kinds Of Cartridge Bullet Other Objects In Different Angle And Position From Each Microscope Module 2 Side



Eyepiece 10X 22x12mm High Eyepoint



150W Cool Light Source With Optical Filter & Light Collector (Optional)



Flourescing Light Lens Set, To Eliminate Flare Light And Cleaning Lights



Ultraviolet Light Lens

Filters: Red, Blue, Yellow, Green

Product Description

LCD Forensic Comparison Microscope A18.1825-LCD



OPTO-EDU (BEIJING) CO., LTD.

OPTO-EDU

F-1501 Wanda Plaza, No.18 Shijingshan Road, Beijing 100043, China
Tel:+8610 88696020 Fax:+8610 88696085

A18.1825-LCD
Digital Forensic Comparison Microscope



Key Features



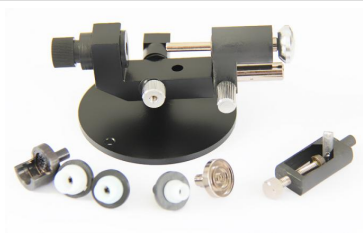
Large Binocular Head

Both eyepiece tubes feature diopter adjustment (+/-5) with WF 10X/22mm high eyepoint eyepieces



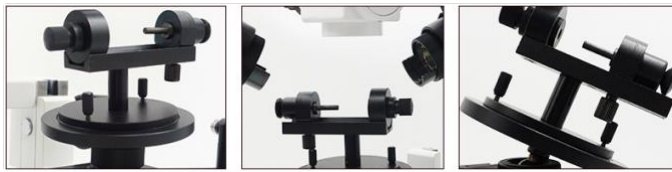
5-Step Magnification Switch

Zoom plan objectives: 0.8x, 1.25x, 2x, 3.2x, 4.8x
Includes Magnification Correction System with correcting lens



Bullet Holder Set

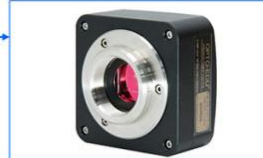
Holds and views all kinds of cartridges, bullets, and other objects at different angles and positions freely. Each microscope includes 2 sets.



Special Designed Dual Photo Port:
--Back For C-Mount + Digital Camera,
--Front For Canon SLR Adapter, For LCD Digital Camera



① C-Mount + Digital Camera
② Canon SLR Adapter
③ C-Mount + Digital Camera + LCD Digital Camera



Digital Camera On Back Port



Canon SLR Camera On Front Port



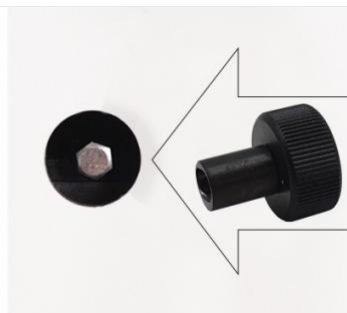
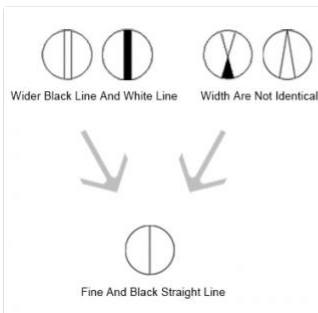
LCD Digital Camera On Front Port



Ultraviolet Light Lens



Filters: Red, Blue, Yellow, Green



Optical Components

Separation Line Adjust System:

Black, with special designed adjust driver

Coaxial Light Attachment:

Provides vertical light path for viewing inside deep holes

Polarizing Light Lens Set:

Eliminates flare and dazzling lights

Eyepieces:

WF 10x/22mm and WF 20x/12mm, high eyepoint (2 each included)

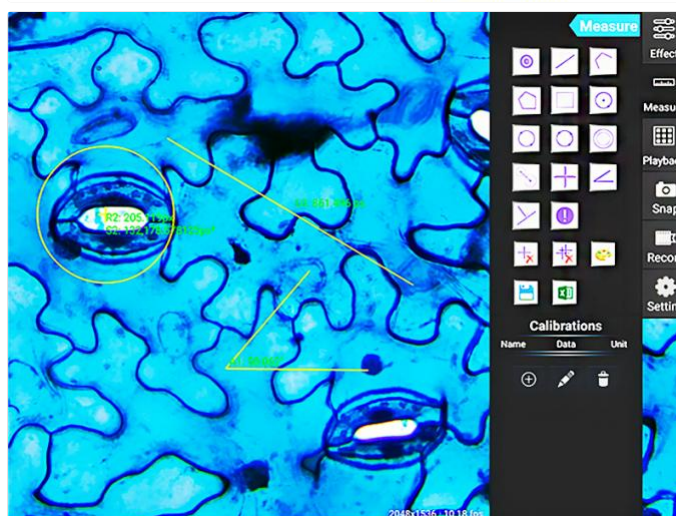
Auxiliary Lenses:

0.4x and 2x (2 each included)

LCD Digital Camera System



10.5" LCD Digital Camera



Opto-Edu has upgraded A18.1825-LCD's LCD from A59.3520 to A59.3521 in 2024, featuring:

- Larger 10.5" LCD display
- Higher 8.0M 4K resolution
- Improved software
- All at the SAME price!

LCD Camera Comparison

Feature	A59.3520	A59.3521 (2024 Upgrade)
LCD	9.7" HD IPS Touch Screen	10.5" HD IPS Touch Screen
Camera	5.0M Digital Camera	8.0M 4K Digital Camera
Resolution	2048x1536 @15FPS	3840x2158 @30FPS
Memory	2GB DDR3 / 8GB EMMC	2GB LPDDR4 / 16GB EMMC
Connectivity	USB2.0, Mini HDMI	USB3.0, HDMI, LAN
System	Android 5.1	Android 11

Technical Specifications

LCD Pad Digital Camera:	10.5" LCD, Android System, 8.0 MP, 4K resolution
Magnification Range:	3.8x~230x
Binocular Head:	30° incline, interpupillary distance 48~75mm, diopter ± 5 adjustable
Working Distance:	101mm
Light Sources:	Includes 12V50W halogen, 5W LED, coaxial, polarizing, and UV light lenses
Power:	80~240V wide range voltage
Dimensions:	37×30×63cm





Opto-Edu (Beijing) Co., Ltd.



0086 13911110627



sale@optoedu.com



cnoec.com

F-1501 Wanda Plaza, No. 18 Shijingshan Road, Beijing 100043, China