



Hdmi Digital Microscope Camera Type C Mouse Control Measuring 2.0m

Our Product Introduction

Basic Information

- Place of Origin: China
- Brand Name: CNOEC, OPTO-EDU
- Certification: CE, Rohs
- Model Number: A59.3507
- Minimum Order Quantity: 1 pc
- Price: FOB \$1~1000, Depend on Order Quantity
- Packaging Details: Carton Packing, For Export Transportation
- Delivery Time: 5~20 Days
- Payment Terms: T/T, West Union, Paypal
- Supply Ability: 5000 pcs/ Month

OPTO-EDU



Product Specification

- Sensor: Sony IMX307, 1/2.8" CMOS
- Pixel Size: 2.9μm*2.9μm
- Resolution: 2.0M
- FPS: Photo 1920*1080@60FPS, Video 1920*1080@30FPS
- Exposure: Exposure Time 0-33MS, Auto/Manual Adjust, Support Target Brightness Setup
- White Balance: Auto/Manual
- Parameter: Set Contrast, Saturation, Gamma, Sharpness, Noise Reduction, Etc
- Output: HDMI+Type-C
- USB: 1xUSB Connect To Mouse
- Language: Support Chinese, English, Deutsch, France, Japanese
- Highlight: hdmi digital microscope camera,
2.0m digital microscope camera,
2.0m usb microscope camera

OPTO-EDU



Product Description

HDMI + Type C UVC + USB2.0 To U Disk Image Output Picture & Video
2.0M Full HD Resolution 1920*1080@60FPS For HDMI & USB Output
UVC Real Time Image Output To PC With S-Eye Measure Software
USB2.0 Mouse Control Menu On HDMI Interface Menu With Measure Function
Type C DC5V/2A Power Supply By Adapter or Power Bank



OPTO-EDU (BEIJING) CO., LTD.

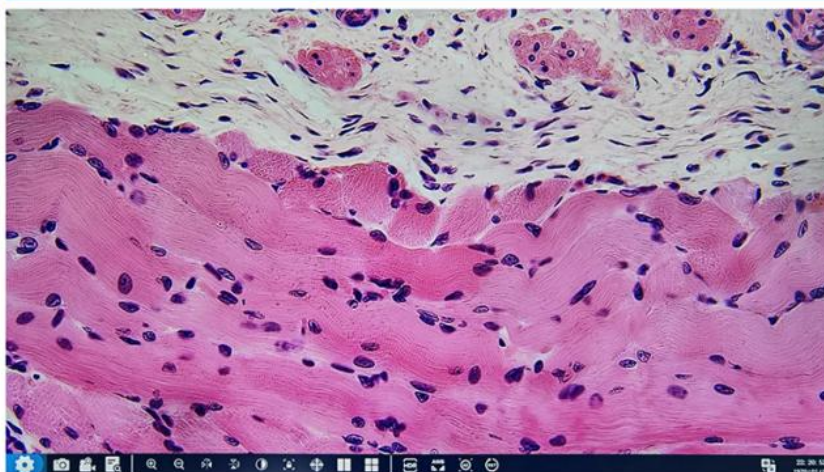
OPTO-EDU

F-1501 Wanda Plaza, No.18 Shijingshan Road, Beijing 100043, China
Tel:+8610 88696020 Fax:+8610 88696085

A59.3507 HDMI+Type-C, Mouse Control Measuring Digital Camera, 2.0M

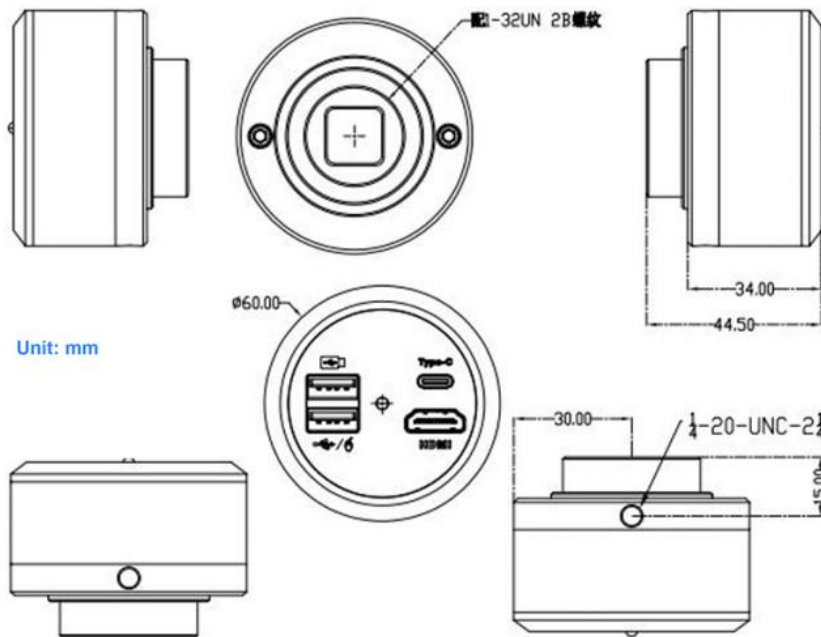


A59.3507 Software

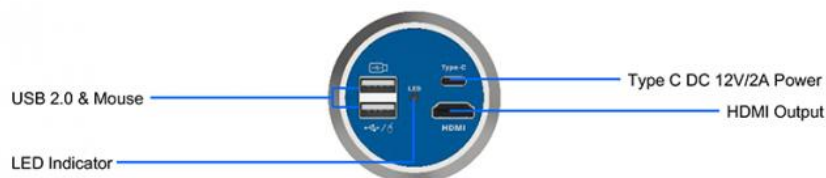




Product Specification



Items+B2:C17	A59.3507 HDMI+Type-C, Digital Camera, 2.0M
Sensor	Sony IMX307, 1/2.8" CMOS
Pixel size	2.9μm*2.9μm
Resolution	2.0M
FPS	Photo 1920*1080@60FPS, Video 1920*1080@30FPS
Exposure	Exposure Time 0-33MS, Auto/Manual Adjust, Support Target Brightness Setup
White Balance	Auto/Manual
Parameter	Set Contrast, Saturation, Gamma, Sharpness, Noise Reduction, Etc
Output	HDMI+Type-C
HDMI	Full HD 1080p@60FPS HDMI Output To Monitor, Control By USB2.0 Mouse: Move Mouse To Left & Bottom Edge Of HDMI Screen To Call Up The HDMI MAIN MENU & QUICK MENU, To Capture Photo, Video, Measure, Setting.
USB	1xUSB Connect To Mouse, 1xUSB Connect To U Disk To Store Photo & Video
Type C	Output From Type C Port To PC USB Port, S-Eye Measure Softwer For Win10 S-EYE Measure Software: Length: Straight Line Length, Broken Line Length, Curve Length, Parallel Line Distance, Point Line Distance, Line Length Geometry: Radius Circle, Two-point Circle, Three-point Circle, Concentric Circle, Radius Circle, Two-point Circle, Three-point Circle Geometric Area:Polygon, Square Remark: Point Coordinates, Crosshairs, Coordinate Systems, Text Notes
Language	Support Chinese,English,Deutsch, France, Janpanese
Power	Type C DC 12V/2A
Package	Size Φ60x44.5mm Weight 0.2Kg

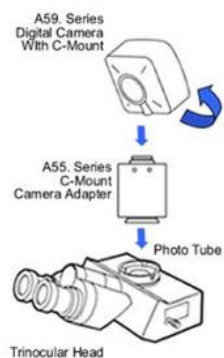


Camera Connect To Microscope

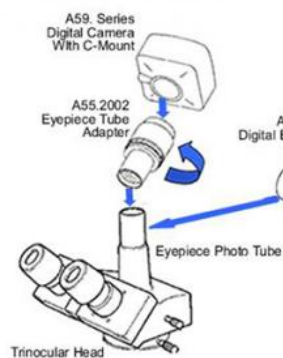
OPTO-EDU

How Camera Connect To Microscope

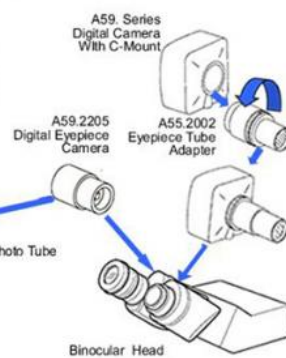
1. To Trinocular Microscope On Straight Photo Tube



2. To Trinocular Microscope On Eyepiece Photo Tube



3. To Binocular Microscope On Eyepiece Tube



Opto-Edu (Beijing) Co., Ltd.



0086 13911110627



sale@optoedu.com



cnoec.com

F-1501 Wanda Plaza, No. 18 Shijingshan Road, Beijing 100043, China