



## 12V 20W Halogen Lamp Biological Microscope Binocular A12.0205 WF 10X Eyepiece

Our Product Introduction

for more products please visit us on [cnoec.com](http://cnoec.com)

### Basic Information

- Place of Origin: China
- Brand Name: CNOEC, OPTO-EDU
- Certification: CE, Rohs
- Model Number: A12.0205
- Minimum Order Quantity: 1 pc
- Price: Negotiation
- Packaging Details: Carton Packing, For Export Transportation
- Delivery Time: 5~20 Days
- Payment Terms: T/T, West Union, Paypal
- Supply Ability: 5000 pcs/ Month



### Product Specification

- Eyepiece: WF 10X( $\Phi$ 18mm)
- Head: Compensation Binocular Head Inclination 30°
- Stage: Double Layer Mechanical, Size 125x115mm, Moving Range 70x30mm
- Condenser: N.A.1.25 Rack & Pinion Adjustment
- Collector: For Halogen Lamp
- Light Source: 12V 20W Halogen Lamp With Brightness Control
- Highlight: **high powered microscope, binocular biological microscope, biological compound microscope**

## Product Description

### Lab Achromatic Biological Microscope Binocular Microscopes A12.0205

This microscope is the conveniently operated optical instruments with excellent functions and new pattern it is very suitable for usage in medical test, teaching and microobservation in hospitals and schools.

--A, C, with coaxial coarse/fine focusing system, with up stop.

--B, D, with coaxial coarse/fine focusing system, with tensional adjustable and up stop

--A1, B1, C1, D1 is monocular head, A2, B2, C2, D2 is binocular head

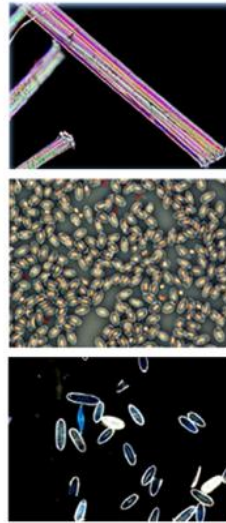
--12V 20W halogen lamp with brightness control

| pecification | A11.0205-A   | A11.0205-B                            | A11.0205-C   | A11.0205-D                            |
|--------------|--|---------------------------------------|--|---------------------------------------|
| Eyepiece     | WF 10X(Φ18mm)  |                                       |  |                                       |
| Objective    | Achromatic 4X/0.10   |                                       |  |                                       |
|              | Achromatic 10X/0.25  |                                       |  |                                       |
|              | Achromatic 40X/0.65(Spring)  |                                       |  |                                       |
|              | Achromatic 100X/1.25(Spring, oil)  |                                       |  |                                       |
| Head         | Compensation binocular head inclination 30°                              |                                       |  |                                       |
| Focus System | Coaxial coarse/fine system focus, Minimum division of fine focusing: 4um |                                       |  |                                       |
|              | With Up stop   | With tensional adjustable and up stop | With Up stop   | With tensional adjustable and up stop |
| Nosepiece    | Quadruple<br><b>Frontward</b> ball bearing outer locating                |                                       | Quadruple<br><b>Backward</b> ball bearing inner locating |                                       |
| Stage        | Double layer mechanical, size 125x115mm, moving range 70x30mm            |                                       |  |                                       |
| Condenser    | N.A.1.25 Rack & pinion adjustment  |                                       |  |                                       |
| Filter       | Blue filter  |                                       |  |                                       |
|              | Frosted filter   |                                       |  |                                       |
| Collector    | For halogen lamp   |                                       |  |                                       |
| Light source | 12V 20W halogen lamp with brightness control                             |                                       |  |                                       |

| Optional Accessories |   | Item No.     |
|----------------------|---|--------------|
| Eyepiece             | Wide field WF16x/11mm   | A51.0203-16A |
|                      | Dividing 10x/17mm   | A51.0205-10  |
| Head                 | Monocular, inclination of 45°                                 | A53.0201-3   |
|                      | Sliding binocular, inclination of 30°                         | A53.0203-121 |
|                      | Dual viewing, inclination of 30°                              | A53.0202-1   |
| Nosepiece            | Triple nosepiece(Frontward ball bearing outer locating)       | A54.0201     |
| Stage                | Fixed with slide moving holder, size 120x120mm, move 70x30mm  | A54.0205-05  |
|                      | Fixed, size 120x120mm   | A54.0205-01  |
| Filter               | Green filter  | A56.0209-2   |
|                      | Yellow filter   | A56.0209-3   |
| Light Source         | Fluorescent lamp 5W, 110V/220V                                | A56.0202     |
|                      | Incandescent lamp, 110V/220V                                  | A56.0203     |
|                      | LED Illumination, high brightness white                       | A56.0204     |
|                      | Transformer for LED, Input 230V, 50/60Hz, Output 9V500mA      | A56.0205-1   |
|                      | Transformer for LED, Input 110V, 50/60Hz, Output 9V500mA      | A56.0205-2   |
|                      | Reflecting mirror, plane-concave reflecting mirror with stand | A56.0206     |
| Polarizing Set       | Polarizer, 360° rotatable                                     | A5P.02010-1  |
|                      | Analyzer  | A5P.02011-1  |



A12.0205 Laboratory Biological Microscope



**Simple Polarizing Attachment Optional**  
Polarizer Used On Light Collector Of Base,  
Analyzer Inserted Into Hole on Nosepiece



**Rackless Working Stage**  
New Rackless Design Avoid Hurt Operator's Hand,  
Large Size 180\*150mm, Moving Range 75\*50mm

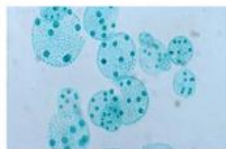
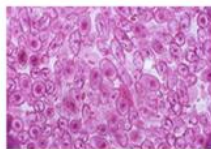


**Back Handle Design**  
For Easy Carrying The Microscope By One Hand

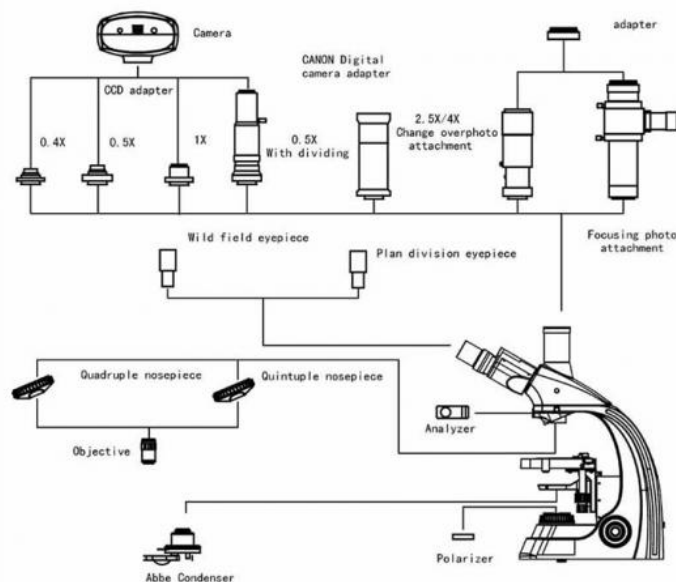




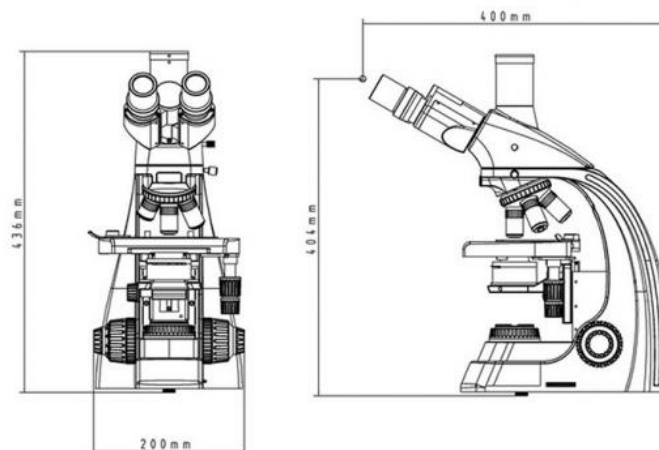
360° Rotatable Head Adaptor For Easy Viewing Height Adjustable



**A12.0205 Laboratory Biological Microscope**  
Trinocular Head, Both Eyepiece Tube Diopter Adjustable, With WF10x/22mm Wide Field Plan Eyepiece



**A12.0205 Laboratory Biological Microscope System Diaphragm**



**A12.0205 Laboratory Biological Microscope System Size**



**Opto-Edu (Beijing) Co., Ltd.**



0086 13911110627



sale@optoedu.com



cnoec.com

F-1501 Wanda Plaza, No. 18 Shijingshan Road, Beijing 100043, China