



Quadruple Nosepiece A12.0736 Olympus Biological Microscope UIS2 Infintiry Optical System

Our Product Introduction

for more products please visit us on cnoec.com

Basic Information

- Place of Origin: China
- Brand Name: CNOEC, OPTO-EDU
- Certification: CE, Rohs
- Model Number: A12.0736
- Minimum Order Quantity: 1 pc
- Price: FOB \$1~1000, Depend on Order Quantity
- Packaging Details: Carton Packing, For Export Transportation
- Delivery Time: 5~20 Days
- Payment Terms: T/T, West Union, Paypal
- Supply Ability: 5000 pcs/ Month



A12.0736 Olympus Biological Microscope

Product Specification

- Optical System: UIS2 Infintiry Optical System
- Head: Binocular Head, 30° Inclined, Interpupillary Distance 48~75mm, High Eyepoint Adjustable 377.8-427.7mm
- Eyepiece: WF10x/20mm
- Nosepiece: Quadruple Nosepiece
- Objective: Plan Achromatic Objective: 4× N.A.0.1, W.D. 27.8mm 10× N.A.0.25 W.D. 8.0mm 40× N.A.0.65 W.D. 0.6mm 100× N.A.1.25 W.D. 0.13mm
- Working Stage: Mechanical Working Stage, Moving Range 76*30mm
- Focusing: Coaxial Coarse 15mm Per Circle, Fine Focus Knob, Minimum Division 0.0025mm
- Condenser: Abbe Condenser N.A.1.25
- Light Source: Transmit Illumination, 0.5W LED, Kohler Illumination
- Power Supply: AC 100-240 V 50/60 Hz 0.4 A With Power



The Lightest Model in Same Size Microscopes



To Hold The Microscope in Comfortable Steady Position

A12.0736 Olympus Biological Microscope

More Images



Special Designed 30° for the Hand Head



4× Zoom 10× Zoom Eyepiece Change at Once



Excellent Tube Length 16.5mm for Better Precision and Compatibility Viewing



Business Design for Safety and Durability

A12.0736 Olympus Biological Microscope

OPTO-EDU

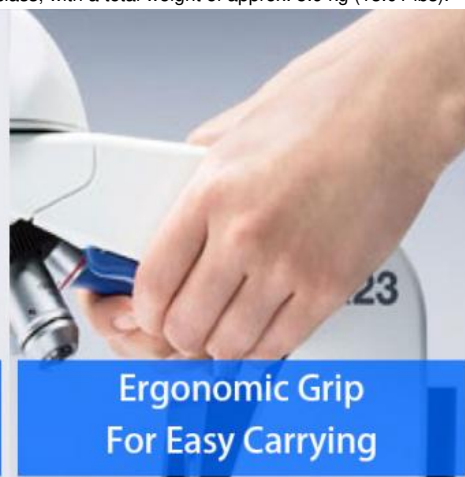


Ergonomic Grip

- Ergonomic grips add safety when retrieving the microscope from high places.
- Colored grips indicate the appropriate places to hold the microscope.
 - Smooth, rounded design eliminates sharp edges.
- The CX23 microscope is one of the lightest in its class, with a total weight of approx. 5.9 kg (13.01 lbs).



Angled Arm Enables Comfortable Carrying



Ergonomic Grip For Easy Carrying

- The arm is angled to keep users' wrists in a comfortable, neutral position.



Fixed Eyepieces

**Rackless Stage
And Stage Cover**

- The eyepiece can be fixed in place to help prevent damage or loss during transport.
- A rackless stage and stage cover enable safety and stability during long periods of use.



Eyepoint Height Adjustment

Interpupillary Adjustment

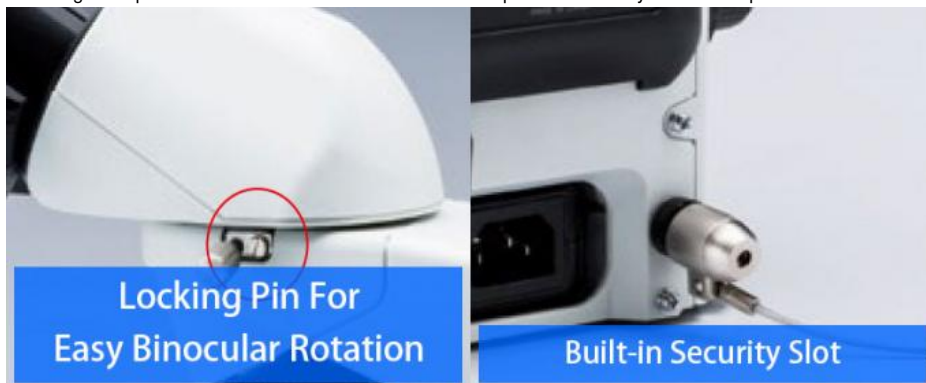
- Interpupillary adjustments, ranging from 48 to 75 mm (1.9 to 3 in.), enables individual users to set it to their needs.
- Eyepoint adjustments accommodate the user's height and provide greater comfort.
- Left and right diopter adjustments enable optimal focus for each eye.



**Convenient And Easily
Accessible Power Cable Storage**

Cable Storage Compartment

- A storage compartment on the back of the CX23 microscope makes it easy to stow the power cable after use.



**Locking Pin For
Easy Binocular Rotation**

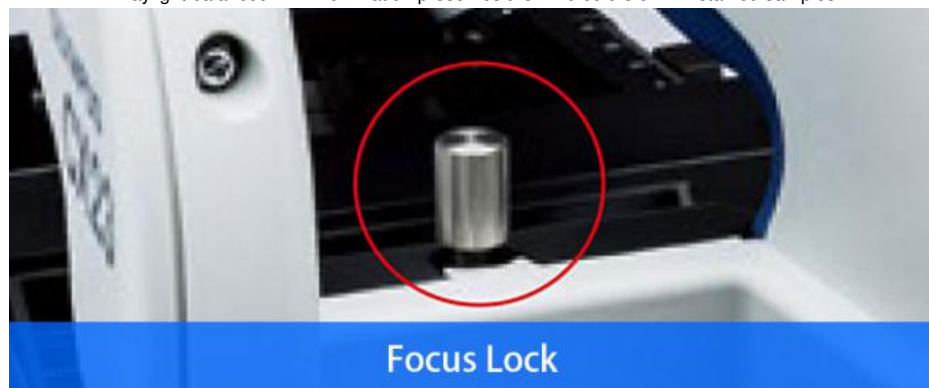
Built-in Security Slot

- A locking pin keeps the observation tube in place.

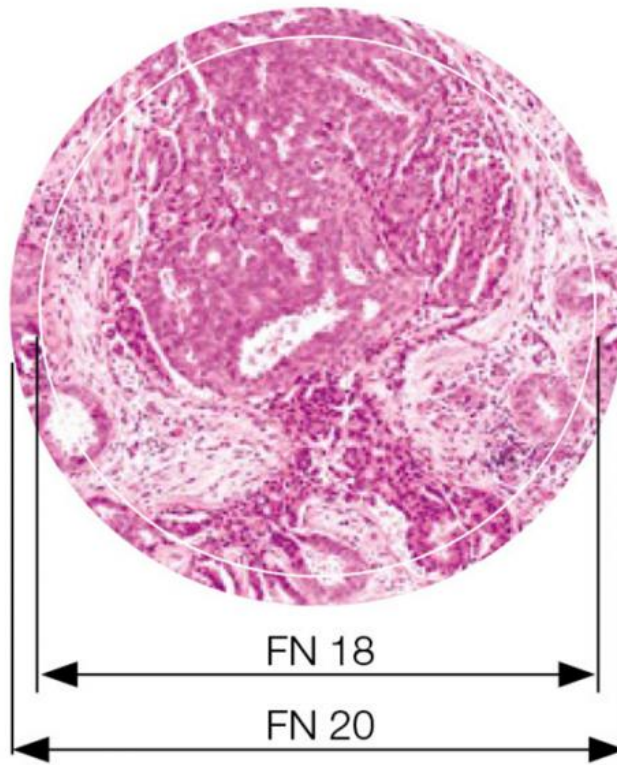
- When the CX23 microscope needs to be left unattended, a built-in security slot enables the attachment of an anti-theft cable.



- An inward-facing rotating nosepiece facilitates a larger working area above the stage, enabling easier operation and specimen exchange or making it easier to apply oil to immersion objectives.
- The CX23 microscope features plan achromat objectives that preserve outstanding image flatness throughout the field of view.
 - Objectives with long working distances provide clearance for thick samples and slides.
 - Bring specimens into focus quickly by using the coaxial knobs for fine or coarse adjustments.
- The microscope is built for durability and precise control, whether accessed from the left or right side.
- A torque release function helps prevent damage if excess force is applied to the coarse focusing knob or stage knob.
 - The energy-saving LED light source provides a long operation lifetime of 20,000 hours.
 - Daylight balanced LED illumination preserves the vivid colors on HE-stained samples.



- The focus lock helps prevent the objectives from damaging the specimen.



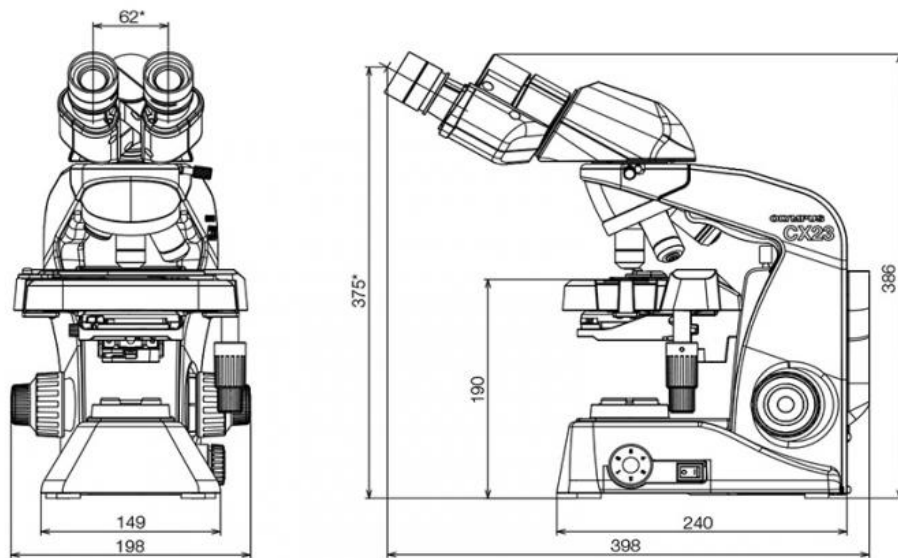
Wide Field Of View

- Field number (FN) of 20 provides a wide field of view.



Dedicated Wooden Case (Optional)

- Protect your investment with an optional custom designed wooden case.



Product Size (Unit: mm)

A12.0736+A59.4972



A12.0736+A59.4972



A12.0736 Olympus Biological Microscope, Cx23		-B	-T
Body		Aluminum Die-cast Metal Frame, Protective Plastic Covering	
Optical System		Infinity Optical System	
Illumination System		Built-in Transmitted Illumination System Led Power Consumption: 0.5 W (Nominal Value)	
Focusing		<ul style="list-style-type: none"> • Stage Height Movement • Coarse Movement Stroke: 15 Mm (0.6 In.) • Coarse Adjustment Limit Stopper • Torque Adjustment For Coarse Adjustment Knob • Fine Focus Knob (minimum Adjustments Gradations: 2.5 μm) 	
Revolving Nosepiece		Fixed Quadruple Nosepiece With Inward Tilt	
Stage		Wire Movement Mechanical Fixed Stage <ul style="list-style-type: none"> • Size (w x D): 174 mm x 89 mm (6.9 In. x 3.5 In.) • Traveling Range (x x Y): 76 mm x 30 mm (3 In. x 1.2 In.) • Specimen Holder • Specimen Position Scale 	
Observation Tube	Type	Binocular Anti-fungal	Trinocular Anti-fungal
	Eyepiece (Anti-fungal)	10x Field Number (fn): 20 15x Eyepiece (fn): 12 (Optional)	
	Tube Inclination	30°	
	Light Path Selector	None	Eyepiece/Camera Port = 100/0 Or 0/100
	Interpupillary Distance Adjusting Range	48 – 75 Mm (1.9 In.–3 In.)	
	Eyepoint Adjustment	370.0 – 432.9 Mm (14.6 In.–17 In.)	
Condenser		<ul style="list-style-type: none"> • Abbe Condenser NA 1.25 With Oil Immersion • Built-in Aperture Iris Diaphragm 	
Objectives		Plan Achromat, Anti-fungal 4x NA 0.1 W.D. 8.0 mm 10x NA 0.25 W.D. 27.8 mm 20x NA 0.4 W.D. 2.5 mm (optional) 40x NA 0.65 W.D. 0.6 mm 100x oil NA 1.25 W.D. 0.13 mm (cx23ledrfs1 Built-in, Cx23ledrfs2/rtfs2 Optional)	

Optional Accessories	Reflection Mirror (ch20-mm), Eyepiece Micrometer Dust Cover, Darkfield Stop (ch2-ds+ch2-fh) Field Diaphragm (cx23-fs)* Dedicated Wooden Case (ch20-wb2)	Reflection Mirror (ch20-mm), Eyepiece Micrometer Dust Cover, Darkfield Filter (ch2-ds)
Dimensions (w x D x H)	198 mm x 398 mm x 386 mm (7.8 In. x 15.7 In. x 15.2 In.)	198 mm x 398 mm x 430 mm (7.8 In. x 15.7 In. x 17 In.)
Weight	Approximately 5.9 Kg (13 Lb)	Approximately 6.5 Kg (14.3 Lb)
Rated Voltage/Electric Current	Ac 100 – 240 V 50/60 Hz 0.4 A	
Power Consumption	Less Than 2 W	



Opto-Edu (Beijing) Co., Ltd.



0086 13911110627



sale@optoedu.com



cnoec.com

F-1501 Wanda Plaza, No. 18 Shijingshan Road, Beijing 100043, China