



Biological Compound Video Digital Microscope / 12.5" Lab Trinocular Profesional Pantalla Lcd Microscope

Our Product Introduction

for more products please visit us on cnoec.com

Basic Information

- Place of Origin: China
- Brand Name: CNOEC, OPTO-EDU
- Certification: CE, Rohs
- Model Number: A33.1503
- Minimum Order Quantity: 1 pc
- Price: FOB \$1~1000, Depend on Order Quantity
- Packaging Details: Carton Packing, For Export Transportation
- Delivery Time: 5~20 Days
- Payment Terms: T/T, West Union, Paypal
- Supply Ability: 5000 pcs/ Month



Product Specification

- Total Magnification: 40X 1000X
- Eyepiece: WF10X/20mm
- Head: Trinocular Head, 30° Inclined, Interpupillary Distance 48-75mm, Both Eyepiece Tube Diopter Adjustable
- Objectives: 4x, 10x, 40x, 100x
- Nosepiece: Quadruple
- Focusing: Coaxial Coarse And Fine Focus Adjustment, Range: 24mm
- Stage: Double Layer Mechanical Stage
142mmx132mm, Moving Range : 75mmx50mm
- Condenser: Abbe N.A.1.25 Condenser
- Illuminator: 3W LED Kohler Illumination With Removable Light House
- Highlight: digital trinocular microscope,
usb digital microscope,
infinity plan microscope



More Images



Product Description

OPTO-EDU A33.1503 12.5" Microscopio digital trinocular profesional de la pantalla Lcd digital microscope

A33.1503 is a type of professional LCD biological microscope for laboratory or hospital, equipped with 12.5" LCD high resolution screen, provides excellent optical performance. Because of the streamline figure and pastel color, it has more beautiful appearance. With the large size double layer mechanical stage, it can provides the more comfortable operation and operational room.

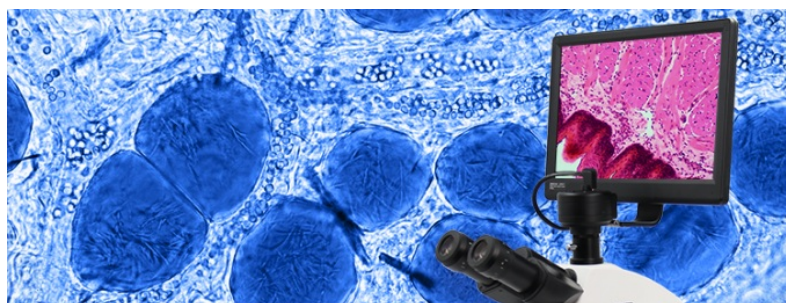
--Infinity Optical System --12.5" LCD Screen With High Resolution

--HD 1080p Digital Camera With TF Card Slot

--Binocular And Trinocular Head Available, Interpupillary Distance 48~75mm

Our Product

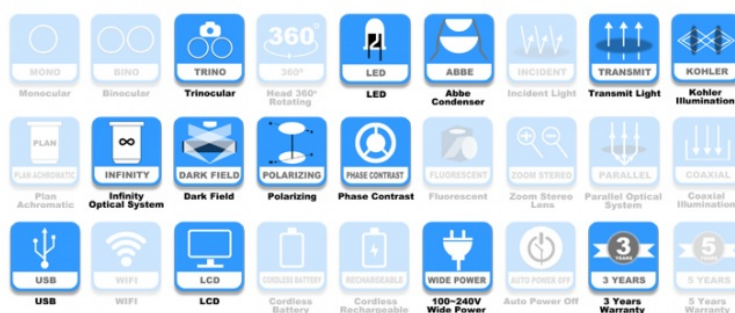
- Wide Field Eyepiece WF10X/F.N.22mm Diopter Adjustable
- Infinite High Contrast Chromatic-free Full Plan Objectives
- Large Size Mechanical Stage 216x150mm, Graphite Surface, Moving Range75mmx55mm
- High Brightness 3W LED Kohler Illumination



A33.1503

12.5" LCD BIOLOGICAL MICROSCOPE

- 12.5" LCD Screen With High Resolution
- HD 1080p Digital Camera With TF Card Slot
- Wide Field Eyepiece WF10X/F N.22mm
- Large Size Mechanical Stage 216x150mm
- 3W LED Kohler Illumination With Removable Light House



Parameter

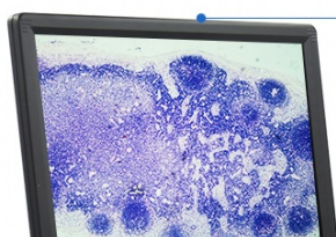
Specification	A33.1503 12.5" LCD Biological Microscope
Head	12.5" HD LCD, SONY CMOS, Resolution 1920x1080
	Five Point Touch Screen, With Hardware Power Switch
	Trinocular Head, 30° Inclined, Interpupillary Distance 48-75mm, Both Eyepiece Tube Diopter Adjustable
Eyepiece	WF10x/20mm
Objective	High Contrast Chromatic-free 4X, 10X, 40X, 100X
Focus System	Coaxial Coarse And Fine Adjustment, Fine Division 0.002mm, Coarse Stroke 37.7mm/Rotation, Moving Range 24mm
Nosepiece	Quadruple, Reversed Type With Positive Click Stops
Stage	Large Size Double Layer Mechanical Stage 142x132mm, Graphite Surface, Moving Range 75mmx50mm
Condenser	Abbe Condenser NA1.25
Filter	Blue filter Φ 38 (Not Available For LED Illumination)
Light Source	3W LED Kohler Illumination With Removable Light House
Adapter	C-Mount 1.0x

Product Display

PRODUCT DISPLAY

Size and Weight

Product Size	27x10x20x62CM
Net Weight	7.3KG







 A33.1503 LCD Biological Microscope



A33.1503 LCD Biological Microscope Optional Accessories		
Eyepiece	WF 16X/F.N.15mm	A51.1502-16
	WF 20X/F.N.12mm	A51.1502-20
Nosepiece	Backward Quintuple Nosepiece	A54.1502-5
Dark Field	Dark Field Condenser, Dry, N.A.1.25	A5D.1502-D
	Dark Field Condenser, Immersion, N.A.1.25~1.36	A5D.1502-I
Polarizing	Polarizer & Analyzer	A5P.1501
Adapter	C-Mount 0.5x	A55.1502-05

Product Details

PRODUCT DETAILS



01 HEAD

Trinocular head with 12.5" LCD screen and WF10x/22mm wide field eyepiece, 30° inclined, both eyepiece tube diopter adjustable.



02 NOSEPIECE

Backward quadruple nosepiece. Equipped with high contrast chromatic-free 4X, 10X, 40X, 100X.

03 WORKING STAGE

Large size double layer mechanical stage
216x150mm, graphite surface, moving range
75mmx55mm.





04 FOCUSING

Low position designed, coaxial coarse and fine adjustment, fine division 0.002mm, coarse stroke 37.7mm/rotation, moving range 24mm.

05 CONDENSER

NA1.25 Kohler illumination condenser with iris diaphragm. Moving by precision metal cog-wheel gearing.



06 ILLUMINATION

3W LED light source, removable lighthouse for easy changing bulb.

07 SWITCH & POWER SOCKET

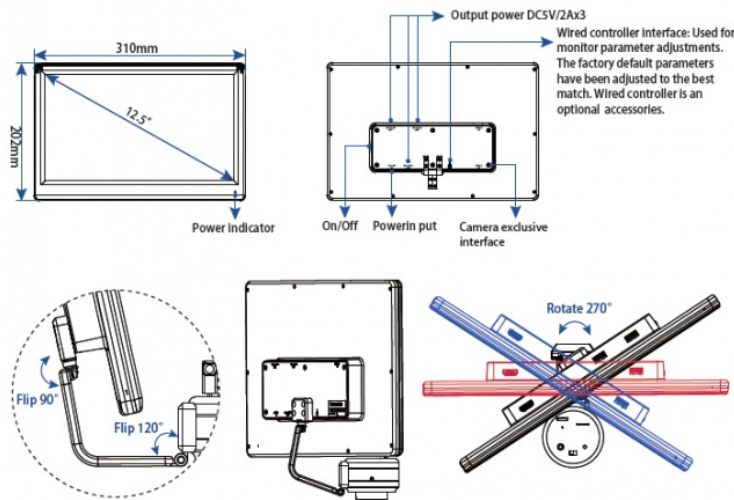
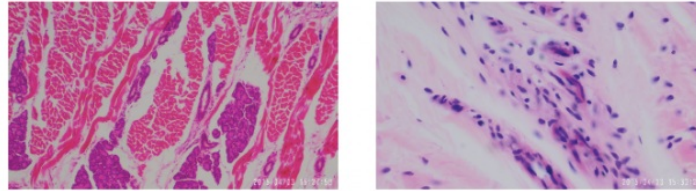
AC 100V-240V.



Related Products

Product Application

A59.4950 is a professional imaging system of camera integrated with displayer, which uses high-performance CMOS on image capture and adopts high-resolution fog LCD to truly restore images. With multi-angle and multi-joint rotation, the display is designed flexibly and easy to use, which meets the requirement of fast and efficient inspection. Equipped with wired controller to facilitate operation.



Specification of LCD Pad Camera	
Camera specifications	
Image Sensor	SONY CMOS IMX291 Super Wide Dynamic CMOS Sensor
Expose Mode	Rolling Shutter
Maximum Resolution	1920 x 1080 (2,073,600 pixels)
Sensor Optical Format	1/2.8" (6.058mm(H) x 4.415mm(V))
Pixel Size	2.9μm x 2.9μm
Dynamic Range	128dB
SNR(Signal Noise Ratio)	30dB
Spectral Characteristics	380~650nm
Exposure Capability	Real-time Auto, Single Auto, Manual Adjustment
White Balance	Real-time Auto, Single Auto, Manual Adjust RGB Separately
Display (preview) Resolution	HDMI: 1920X1080P60
Record Format	Snapshot Picture Format: JPG Resolution: 1920x1080 Record Video Format: MOV Resolution: 1920X1080P30, 1280x720P60
Record Route	TF Card (Maximum Support 128G, Support Hot Plug)
Camera Interface Parameter	
Camera Interface	C mount Thread (1" x 1/32)
Image Output Interface	HDMI TYPE C (Mini HDMI)
Monitor Parameters	
Size	12.5"
Type	a-Si TFT-LCD/IPS
Resolution	1920x1080
Color Display	16.7M
Brightness	300 Nit
Contrast	800:1
Visible Angle	170° Horizontal & Vertical
Power Supply	Adapter: Input: AC100~240V/50~60Hz; Output: DC12V/5A/60W

	Monitor:USB-A-Output:DC5V/2A×3
Image Input Interface	HDMI1,HDMI2

*** Special Designed Firmware System, User Can Switch Between Biological/Industrial & LED/ Halogen Lamp, To Get The Most Sharp & Clear Image Acroding To Different Condition**



*** All-in-One Design : 2xHDMI Input Port, 3xUSB 5V2A Power Supply Port For Extra Ring Light & Mobile Phone**



Packaging & Shipping

PACKING & SHIPPING

PACKING: Polyfoam protection and strong carton.

Package	A12.1502 Microscope 53*32.5*53.5CM & A59.4950 Camera 31.8*15.2*23CM
Gross Weight	A12.1502 Microscope 11KG & A59.4950 Camera 2.2KG
Packing	Polyfoam Protection And Strong Carton
Shipping Time	5~20 Days After Receive The Deposit



SHIPPING TIME: 5~20 days after receive the deposit.



Company Information

OPTO-EDU is a unique, long-term and excellent supplier of microscopes and educational instruments from China. We focus on the international market of microscopes and education instruments. At present our customers come from more than 80 countries, such as the United States, Britain, Russia, Canada, Germany, Denmark, Poland, Sweden, the United Arab Emirates, Qatar, Saudi Arabia, Egypt, Argentina, Korea, Thailand, Brazil and so on. OPTO-EDU as our trademark is well known in the professional field, our products ranked No.1 in Alibaba.com. We have been working tirelessly for the sale of high quality optical products and educational products made in China to the world market.



😊 I'm OPTO-EDU, nice to meet you!



As one of the most professional and most dynamic suppliers of optical and educational products in China, we have been concentrating on this field for more than 10 years. We have created the most professional product database of microscope & educational instrument, with 5000+ products and 500+ professional suppliers in system. We can provide our customers with the most comprehensive range of products in the related field, from the primary entry products to professional-level solutions, to meet the different needs of customers in the field of scientific research, teaching, industry, agriculture and various industries.



Opto-Edu (Beijing) Co., Ltd.

☎ 0086 13911110627

✉ sale@optoedu.com

🌐 cnoec.com

F-1501 Wanda Plaza, No. 18 Shijingshan Road, Beijing 100043, China