



Binocular Wide Field Fluorescence Microscopy A16.2614 40X - 1600X Magnification

Our Product Introduction

for more products please visit us on cnoec.com

Basic Information

- Place of Origin: China
- Brand Name: CNOEC, OPTO-EDU
- Certification: CE, Rohs
- Model Number: A16.2614
- Minimum Order Quantity: 1 pc
- Price: Negotiation
- Packaging Details: Carton Packing, For Export Transportation
- Delivery Time: 5~20 Days
- Payment Terms: T/T, West Union, Paypal
- Supply Ability: 5000 pcs/ Month



Product Specification

- Application: Research|Learning|Laboratory
- Certification: CE|Rohs
- Drawtube: Binocular
- Illumination: Halogen Lamp
- Magnification: 40X - 1600X
- Theory: Fluorescence Microscope
- Highlight: epi-fluorescence microscope, inverted fluorescence microscope



More Images





OPTO-EDU (BEIJING) CO., LTD.

F-1501 Wanda Plaza, No.18 Shijingshan Road, Beijing 100043, China
Tel: +8610 88696020 Fax: +8610 88696085

A16.2614-L

Inverted LED Fluorescent Microscope





Seidentopf Trinocular Head Inclined 45°
Interpupillary Distance 48~76mm
WF10x/22mm, Dia.30mm, High Eyepoint, Diopter Adjustable



Seidentopf Trinocular Head Light Split
Switch E100:P0 / E20:P80

Head & Eyepiece

Seidentopf Trinocular Head Inclined 45° Interpupillary Distance 48~76mm, Light Split Switch E100:P0 / E20:P80
WF10x/22mm, Dia.30mm, High Eyepoint, Diopter Adjustable



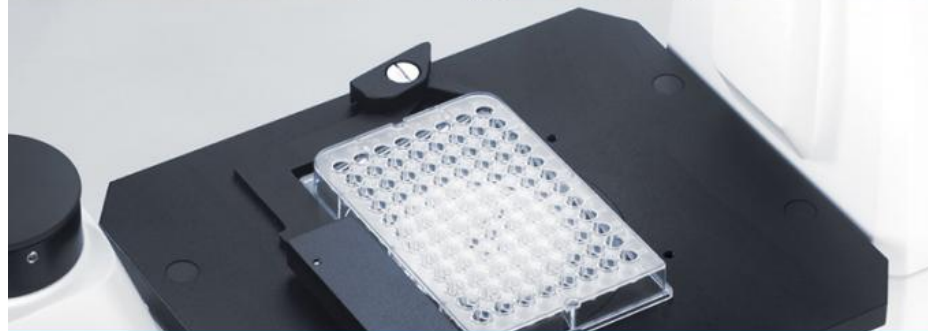
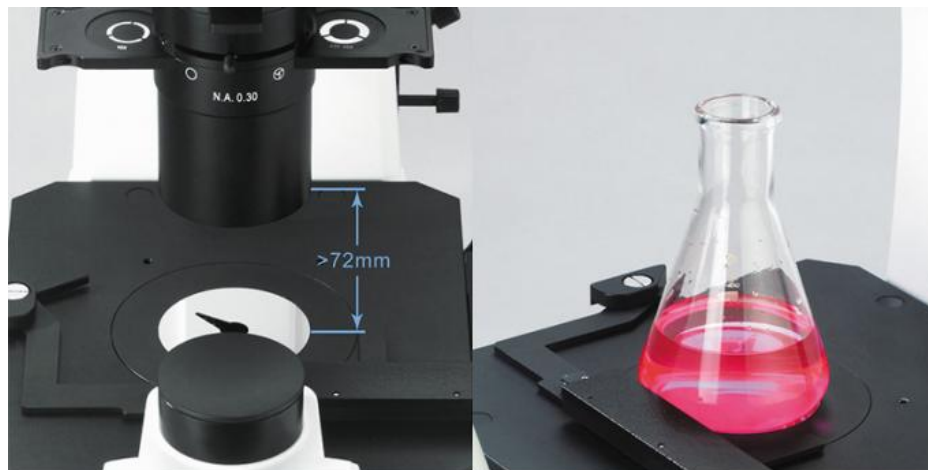
Koehler Illumination Halogen 6V/30W For A14.2603
Koehler Illumination 5W LED For A14.2603-TR



Filters: Blue, Dia.34mm; Green, Dia.34mm

Condenser & Light Source With Filters: Blue, Dia.34mm; Green, Dia.34mm

Koehler Illumination Halogen 6V/30W For A14.2603
Koehler Illumination 5W LED For A14.2603-TR



**Long Working Distance, Working Distance
72mm (With Condenser), 195mm (Without Condenser)**

Long Working Distance

Working Distance 72mm (With Condenser), 195mm (Without Condenser)



**LWD Infinity Plan Fluorescent Objectives 10x, 20x, 40x
LWD Infinity Plan Phase Contrast Fluorescent Objectives 20x**

Objectives

LWD Infinity Plan Fluorescent Objectives 10x, 20x, 40x
LWD Infinity Plan Phase Contrast Fluorescent Objectives 20x



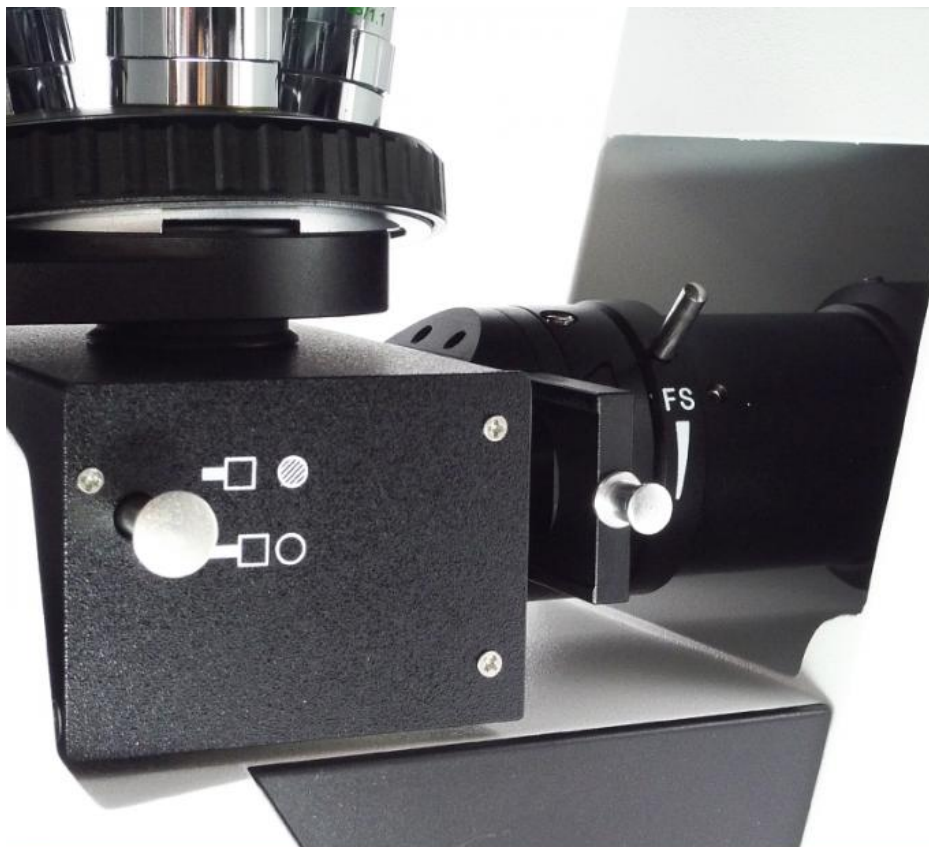
Mechanical Stage Size 210x241mm, Round Slide Size Φ 110mm

Working Stage

Mechanical Stage Size 210x241mm, Round Slide Size Φ 110mm
Culture Dish Holder 54mm



Coaxial Coarse & Fine Focusing



A5F.2603-2 Epi Fluorescence Illumination

A5F.2603 Epi Fluorescence Illumination

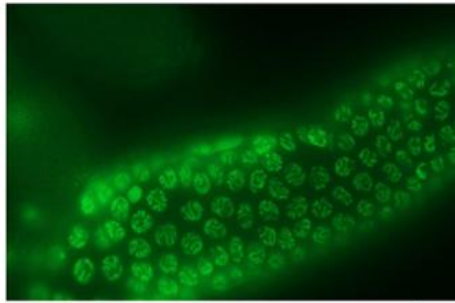
China Fluorescent Filter,
 5W LED Lamp House
 5W LED Power Box
 Ultraviolet Protection Barrier
 Fluorescent Slide Unit 3 Holes, With Filter Diaphragm, Center Adjustable
 5W LED B,G Lamp Each 1 pc



5W LED Lamp House & Power Box, Ultraviolet Protection Barrier



Case Show

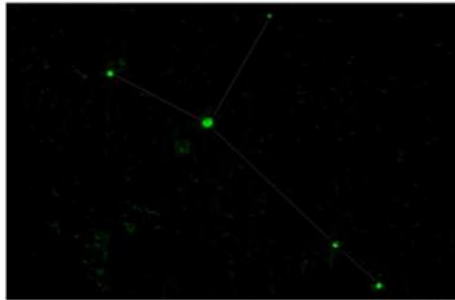
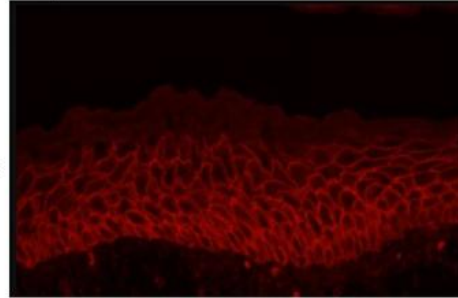


Galloping chromosome

The gonads of *C. elegans* are long-shaped, and the cells in the specific period of meiosis are concentrated in specific areas. The period of the cells can be easily distinguished by observing the morphological characteristics of the chromosomes. The different forms of chromosomes in different periods are like showing us our unique dance.

Huge spark

Visually show the morphological characteristics and levels of stratified squamous cells. Preparation method: Immunofluorescence staining (E-cadherin) was performed on the oral mucosa tissue of mice, and the staining results were observed under a fluorescence microscope and photographed.

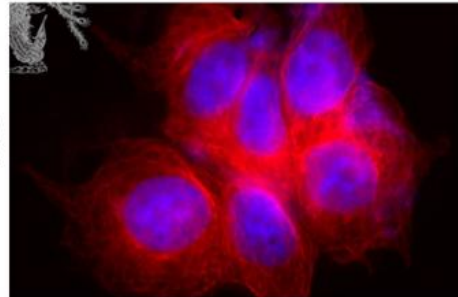


Cancer Galaxy

The gfp fluorescent plasmid expressed in stable phase was transferred to *S. aureus*, and after treatment with high concentration antibiotics overnight, the formation of drug-resistant retaining cells was detected by fluorescence inverted microscope. *S. aureus* with the gfp plasmid elicited green fluorescence, forming a pattern similar to that of the Cancer galaxies.

Phoenix tail feather

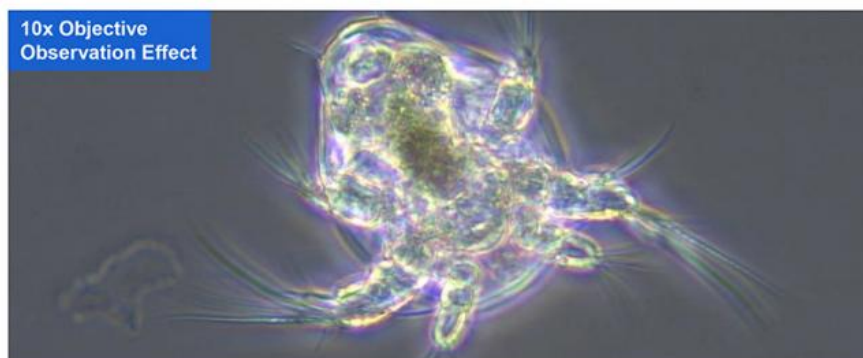
By immunofluorescence assay, the TUBULIN protein was labeled with a red fluorescent secondary antibody (rhodamine) to show the morphology of the microtubules, and the nuclei were stained with DAPI to make them blue. The processed cell slides were placed under a fluorescence microscope for observation and imaging.



Items	A16.2614-L Inverted LED Fluorescent Microscope Specification	-2	-4	Cata. No.
Head	Seidentopf Trinocular Head Inclined 45°, Interpupillary Distance 48~76mm, Light Split Switch E100:P0 / E20:P80	●	●	A53.2643
Eyepiece	WF10x/22mm, Dia.30mm, High Eyepoint,, Diopter Adjustable	●●	●●	A51.2621-1022
	WF15X/16mm, Dia.30mm, High Eyepoint, Diopter Adjustable	○○	○○	A51.2621-1516
	WF20X/12mm, Dia.30mm, High Eyepoint, Diopter Adjustable	○○	○○	A51.2621-2012
Nosepiece	Quintuple	●	●	A54.2610-N925
LWD Infinity Plan Objectives	LPL 4x/0.11, W.D.=12.1mm	○	○	A52.2609-4
	LPL10x/0.25, W.D.=8.3mm	●	●	A52.2609-10
	LPL 20x/0.40, W.D.=7.2mm	●	●	A52.2609-20
	LPL 40x/0.60, W.D.=3.4mm	●	●	A52.2609-40
LWD Infinity Plan Phase Contrast Objectives	LPL Ph P 4x/0.10, W.D.=9.2mm	○	○	A5C.2630-4
	LPL Ph P 10x/0.25, W.D.=8.3mm	○	○	A5C.2630-10
	LPL Ph P 20x/0.40, W.D.=7.2mm	●	●	A5C.2630-20
	LPL Ph P 40x/0.60, W.D.=3.4mm	○	○	A5C.2630-40
	Centering Telescope 11x	○	○	A5C.2610
	Annular Spot 4x	○	○	A5C.2611-4

Phase Contrast	Annular Spot 20x/ 40x	●	●	A5C.2611-10
	Annular Spot 10x	●	●	A5C.2611-20/40
Working Stage	Mechanical Stage Size 210x241mm, Round Slide Size Φ110mm	●	●	A54.2601-D4
	Attached Mechanical Stage, Available For 96 Holes Plate, Moving Range 128x80mm	○	○	A54.2605
	Culture Dish Holder 65mm	○	○	A54.2606-65
	Culture Dish Holder 54mm	●	●	A54.2606-54
	Culture Dish Holder 35mm	○	○	A54.2606-35
	Holder For Blood Cell Counter	○	○	A54.2606-BC
Condenser	Long Working Distance, Quickly Detachable, N.A.0.3, Working Distance 72mm (With Condenser), 195mm (Without Condenser).	●	●	A56.2614-D4
Illumination	Koehler Illumination Halogen 6V/30W, Input Voltage 100V~240V	●	●	A56.2613-30W
	Koehler Illumination 5W LED, Input Voltage 100V~240V	○	○	A56.2651-5W
Power	ECO, Auto Power Off System. Power Off Automatically Upon User Leaving 10 Minutes, Power On Automatically Upon User Approaching Detected, This Function Can Be Shut Down Manually	○	○	A56.2660
Filter	Blue, Dia.34mm	●	●	A56.2616-34B
	Green, Dia.34mm	●	●	A56.2616-34G
	Amber, Dia.34mm	○	○	A56.2616-34A
	Grey, Dia.34mm	○	○	A56.2616-34N
Adapter	C-Mount 0.5x, Focus Adjustable	○	○	A55.2601-05
	C-Mount 0.75x, Focus Adjustable	○	○	A55.2601-75
	C-Mount1.0x, Focus Adjustable	○	○	A55.2601-10
Epi Fluorescence Illumination	Upgrade From A14.2603 Inverted Microscope With B,G China Fluorescent Filter, 5W LED Lamp House 5W LED Power Box Ultraviolet Protection Barrier Fluorescent Slide Unit 3 Holes, With Filter Diaphragm, Center Adjustable 5W LED B,G Lamp Each 1 pc	●	○	A5F.2604-2
	Upgrade From A14.2603 Inverted Microscope With B,G,V,VU China Fluorescent Filter, 5W LED Lamp House 5W LED Power Box Ultraviolet Protection Barrier Fluorescent Slide Unit 3 Holes, With Filter Diaphragm, Center Adjustable 5W LED B,G,V,VU Lamp Each 1 pc	○	●	A5F.2604-4
Package	Packing Size: 660mmx590mmx325mm Fluorescence Carton Size 520x470x235mm			
Weight	Gross Weight: 18 kgs, Net Weight: 13.5 kgs			

Note: "●"In Table Is Standard outfits, "○" Is Optional Accessories.



Product Accessories



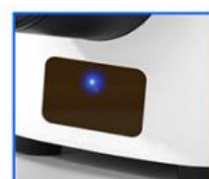
A51.2621-1022
WF10x/22mm



A51.2621-1516
WF15x/16mm



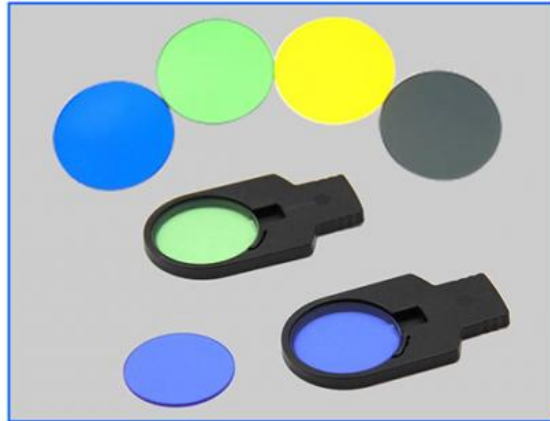
A51.2621-2012
WF20x/12mm



A56.2660
ECO, Auto
Power Off System



A56.2614-D4
Long Working Distance
Quickly Detachable
N.A.0.3 Condenser



A56.2616
Filter: Blue, Green;
Amber; Grey
(Optional)



A52.2609 LWD Infinity Plan Objective: 10x, 20x, 40x
A5C.2630 LWD Infinity Plan Phase Contrast Objective: 20x



A55.2601-10
C-Mount 1.0x,
Focus Adjustable



A5C.2610 Centering Telescope 11x (Optional)
& **A5C.2611 Annular Spot 10x/20x/40x**



A55.2601-75
C-Mount 0.75x,
Focus Adjustable



A54.2601-D4
Mechanical Stage
Size 210x241mm
Round Slide Size
Ø110mm



A55.2601-05
C-Mount 0.5x,
Focus Adjustable

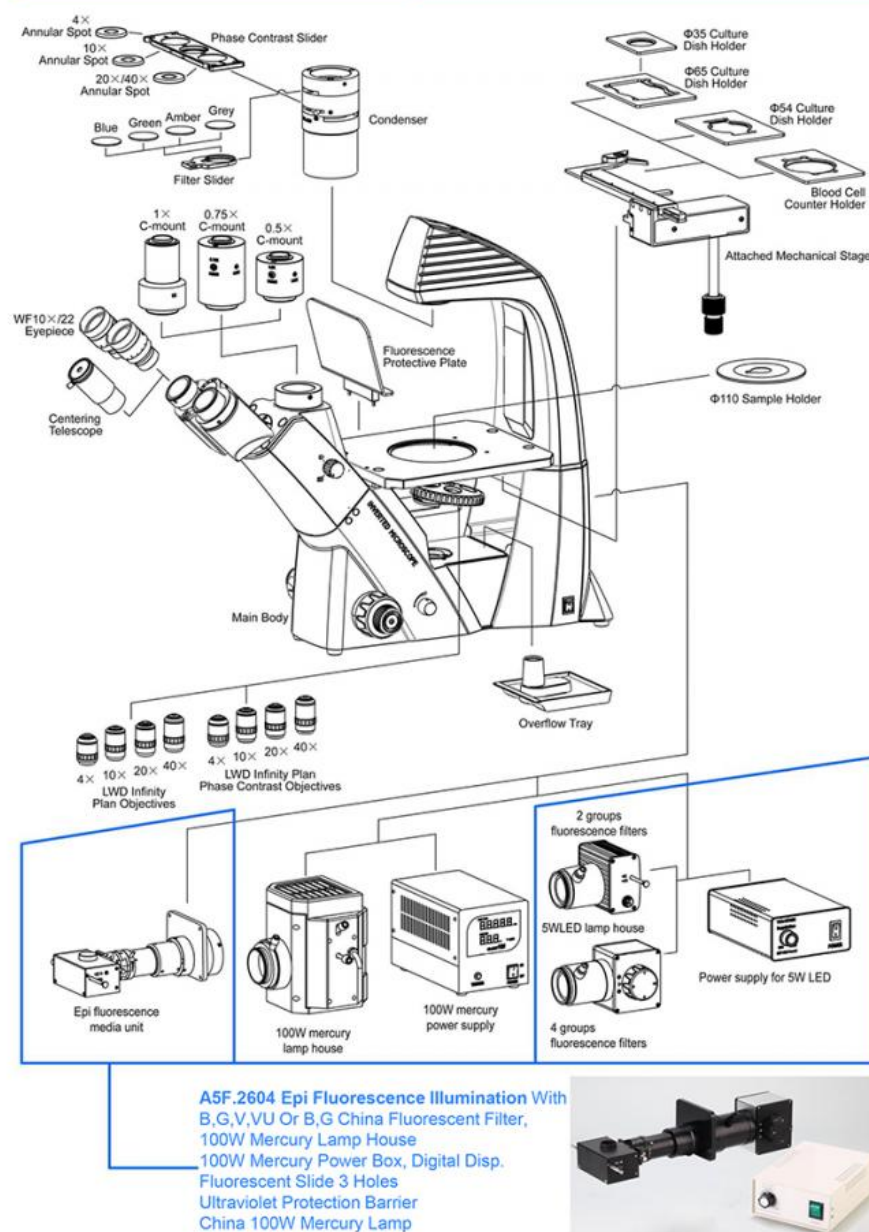


A54.2606-65 & A54.2606-35
Culture Dish Holder 65mm & Culture
Dish Holder 35mm (Optional)



A54.2606-54
Culture Dish Holder 54mm

General Layout Diagram



Opto-Edu (Beijing) Co., Ltd.



0086 13911110627



sale@optoedu.com



cnoec.com

F-1501 Wanda Plaza, No. 18 Shijingshan Road, Beijing 100043, China