



## A16.2605 BGUV Inverted Fluorescence Microscope WF10X/22mm Diopter Adjustable

Our Product Introduction

for more products please visit us on [cnoec.com](http://cnoec.com)

### Basic Information

- Place of Origin: China
- Brand Name: CNOEC, OPTO-EDU
- Certification: CE, Rohs
- Model Number: A16.2605
- Minimum Order Quantity: 1 pc
- Price: Negotiation
- Packaging Details: Carton Packing, For Export Transportation
- Delivery Time: 5~20 Days
- Payment Terms: T/T, West Union, Paypal
- Supply Ability: 5000 pcs/ Month



Automatic Infrared Induction For Power On-off  
Power Off Upon User Leaving 10 Minutes, And Power On Upon User Approaching

### Product Specification

- Eyepiece: WF10X/22mm Diopter Adjustable
- Objectives: LWD Infinity Plan & LWD Infinity Plan Phase Contrast Objectives
- Annular Spot: 10x/20x/40x
- Seidentopf Trinocular Head: Inclined 45°, Interpupillary Distance: 48-76mm
- Digital Photography C-mount: One C-mount For CANON Or NIKON SLR Digital Photography Camera
- Nosepiece: Quintuple
- Mechanical Stage: Included Attached Mechanical Stage
- Culture Dish Holder: 54mm
- Condenser: 4-hole Rotating Disc Phase Contrast Condenser
- Epi Fluorescence Illumination: Epi Fluorescence Media Unit, Field Diaphragm, Center Adjustable.
- Highlight: **epi-fluorescence microscope, inverted fluorescence microscope**



### More Images



Special Light Port For SLR Digital Camera, 7° Inclined Up To Be More Convenient To Observe The Image Of The SLR Camera



12V/5000Kmer Illumination Makes The Field More Even And Brighter.



4 Hole Rotating Disc Phase Contrast Condenser For Standard To Change Bright Field And Phase Contrast Fast

## Product Description

**Brand-new development for life science research**

**Both light ports for digital camera and SLR photography, available for observing with digital camera and SLR photography at the same time**

**IOS Infinity optical system, perfect for cell observation and culture**

--Automatic infrared induction for power on-off.

Power off upon user leaving 10 minutes, and power on upon user approaching.

--Special light port for SLR digital camera, 7°inclined up to be more convenient to observe the image of the SLR camera

--12V/50W Kohler illumination makes the field more even and brighter.

--4-hole rotating disc phase contrast condenser for standard to change bright field and phase contrast fast

**OPTO-EDU**

## Inverted Fluorescent Microscope

**A16.2605**

- 🔗 New Design In 2019!
- 💡 12V50W Halogen Kohler Illumination
- 🔧 Trinocular Head + Adapter For DSLR Camera
- 🔦 ECO Infrared Sensors Indicator
- ☁ Epi Fluorescence, Field Diaphragm, Center Adjustable

**Don't Miss Newest Microscope For You!**

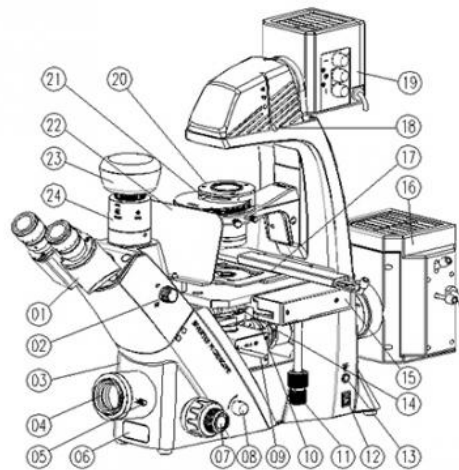


## PRODUCT DESCRIPTION



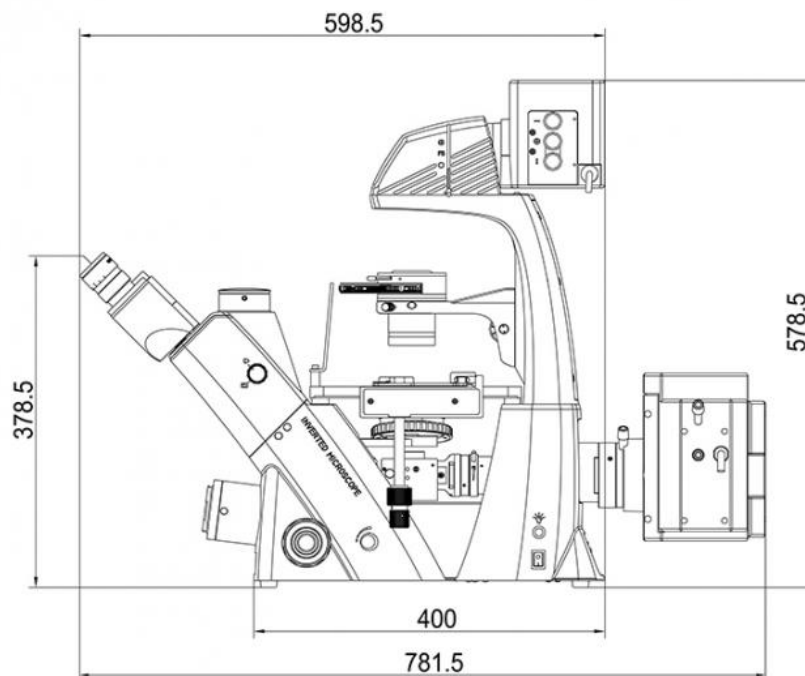
 A16.2605 Inverted Fluorescent Microscope

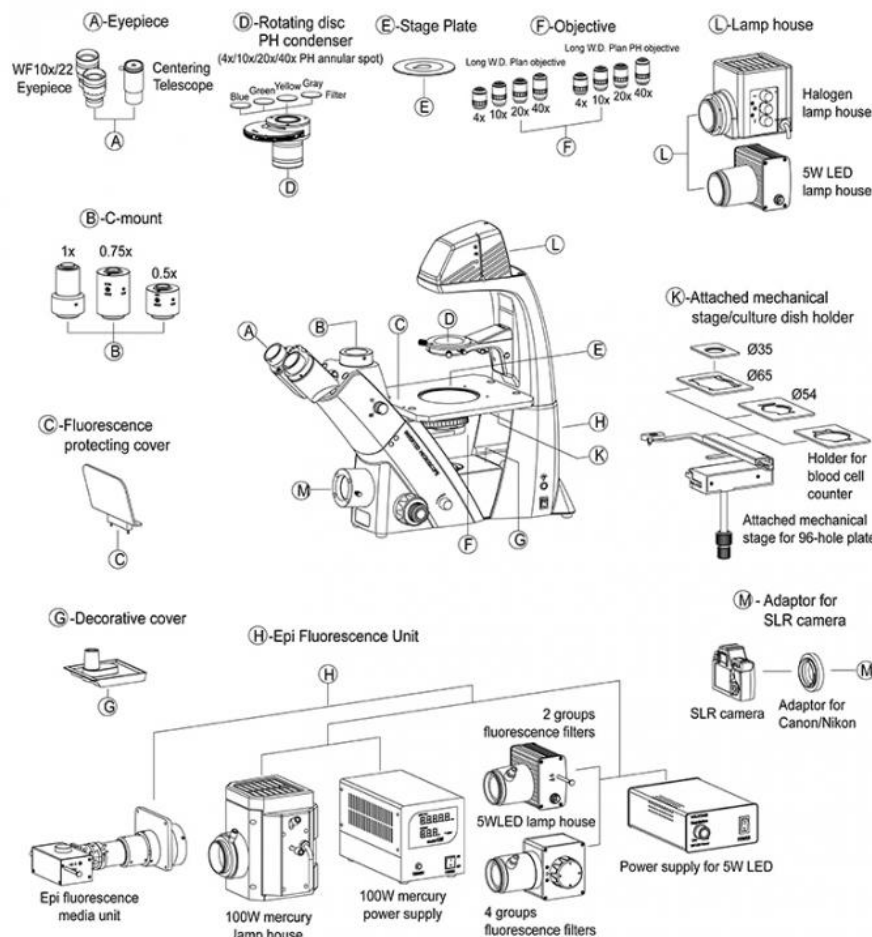
## A16.2605 INVERTED FLUORESCENT MICROSCOPE



- |   |   |
|---|---|
| 01) Eyepiece                                | 13) Infrared Sensors Switch                     |
| 02) Trinocular Switch knob                  | 14) Nosepiece                                   |
| 03) Main Body                               | 15) Attached Mechanical Stage For 96-hole Plate |
| 04) Adaptor for DSLR Camera                 | 16) 100W Mercury Lamphouse                      |
| 05) Fastening Screw for DSLR Camera Adaptor | 17) Stage Plate                                 |
| 06) Infrared Sensors Indicator              | 18) Field Diaphragm Lever                       |
| 07) Coarse & Fine Focusing Knobs            | 19) 12V50W Halogen Lamphouse                    |
| 08) Potentiometer Knob                      | 20) Turnable Phase Contrast Condenser           |
| 09) Fluorescent Transforming Handle         | 21) Aperture Diaphragm Lever                    |
| 10) Diaphragm Slider                        | 22) UV Protecting Plate                         |
| 11) Mechanical Stage Hand Knob              | 23) Digital Camera                              |
| 12) Power Switch                            | 24) C-mount                                     |

**A16.2605 Inverted Biological Microscope General Layout Diagram:**





A16.2605 Inverted Fluorescent Microscope Specification	
Eyepiece	WF10X 22mm Diopter Adjustable Centering Telescope
Objectives	LWD Infinity Plan Objectives LPL 4X 0.11 W.D.=12.1mm  LWD Infinity Plan Phase Contrast Objectives LPL PhP 10× 0.25 W.D.=8.3mm LPL PhP 20× 0.40 W.D.=7.2mm LPL PhP 40× 0.60 W.D.=3.4mm
Annular Spot	10×/20×/ 40×
Seidentopf Trinocular Head	Inclined 45°, Interpupillary Distance: 48-76mm Light Distribution (both): 100: 0 (100% For Eyepiece) 80:20 (80% For Trinocular Head, And 20% For Eyepiece)
Digital Photography C-mount	100% Light For Photography Port (One C-mount For CANON Or NIKON SLR Digital Photography Camera)
Nosepiece	Quintuple
Mechanical Stage	Stage Size: X×Y 210×241mm, Round Slide Size:φ110mm, Attached Mechanical Stage(Available For 96 Holes Plate, Moving Range X×Y:128×80mm.)
Culture Dish Holder	54mm
Condenser	4-hole Rotating Disc Phase Contrast Condenser N.A.0.4 W.D.45mm It Can Be Up-down Adjusting
Koehler Illumination	12V/50W Halogen, Input Voltage:100V 240V
Filter	Blue Green
Epi Fluorescence Illumination	Epi Fluorescence Media Unit , Field Diaphragm,Center Adjustable. 100W Mercury Lamp 5WLED B, G, V, UV Fluorescence Filters Can Be Chosen Digital Mercury Lamp Power Box (For 100W Mercury Or 5WLED) (Input Voltage:100V 240V)
Optional Accessories	
LWD Infinity Plan Objectives	LPL 10X 0.25 W.D.=8.3mm LPL 20X 0.40 W.D.=7.2mm

	LPL 40X 0.60 W.D.=3.4mm
LWD Infinity Plan Phase Contrast Objectives	LPL PhP 4× 0.10 W.D.=9.2mm
Annular Spot	4×
	65mm
Culture Dish Holder	35mm
	Holder For Blood Cell Counter
Koehler Illumination	5WLED, Input Voltage:100V 240V
Auto Power On-off System	Power Off Automatically Upon User Leaving 10 Minutes, Power On Automatically Upon User Approaching
Filter	Amber
	Grey
C-mount	1×C-Mount (Better For Digital Photograph).
	0.5X C-Mount (Focus Adjustable, Better For Digital Camera)
	0.75X C-Mount (Focus Adjustable, Better For Digital Camera)



**Opto-Edu (Beijing) Co., Ltd.**

0086 13911110627

[sale@optoedu.com](mailto:sale@optoedu.com)

[cnoec.com](http://cnoec.com)

F-1501 Wanda Plaza, No. 18 Shijingshan Road, Beijing 100043, China