



Opto Edu A41.1952 Operating Microscope Neurosurgery Brain Surgery Ent Dual Head

Our Product Introduction

Basic Information

- Place of Origin: China
- Brand Name: OPTO-EDU
- Certification: CE, Rohs
- Model Number: A41.1952
- Minimum Order Quantity: 1 pc
- Price: FOB \$1~1000, Depend on Order Quantity
- Packaging Details: Carton Packing, For Export Transportation
- Delivery Time: 5~20 Days
- Payment Terms: T/T, West Union, Paypal
- Supply Ability: 5000 pcs/ Month



Product Specification

- Main Usage: Neurosurgery, Brain Surgery, ENT
- Diopter: Both Left & Right Eyetube Diopter Adjustable $\pm 6D$
- Eyepiece: WF12.5x
- Zoom Body: Manual Continues Zoom 1:6, Parallel Light System
- Objective: F=300mm
- Total Magnification: 2x~12.5x
- Highlight: **dual head operating microscope neurosurgery ,
operating microscope neurosurgery ,
neurosurgery brain surgery microscope**

for more products please visit us on cnoec.com

Product Description

A41.1951, A41.1952 Surgical Operation Microscope Features

A41.1951, A41.1952 Series Operating Microscopes, is advanced high quality series. It use fibre-optic cable for coaxial illumination, with 3 steps zoom body, has total magnification 2x~30x, featured with Motorized Focusing, it is widely used in hospital for Orthopedics, Hand, Chest, Burn And Plastic Surgery, Andrology, Genitourinary, Animal Anatomy and etc.

- 2 People 2 Binocular Manual Swing Head In X Direction +/-45°, In Y Direction +/-90°
- Manual Continuous Zoom 2x~12.5x Objective Parallel Light System
- 2 Directions Motorized Foot Switch Control Focusing Up/Down
- Four Feet With Locking Wheels, Max Extended Length 1100mm
- Coaxial Halogen Illumination, Light Spot Dia.70mm, Max Brightness 60000 Lux



OPTO-EDU (BEIJING) CO., LTD.

OPTO-EDU

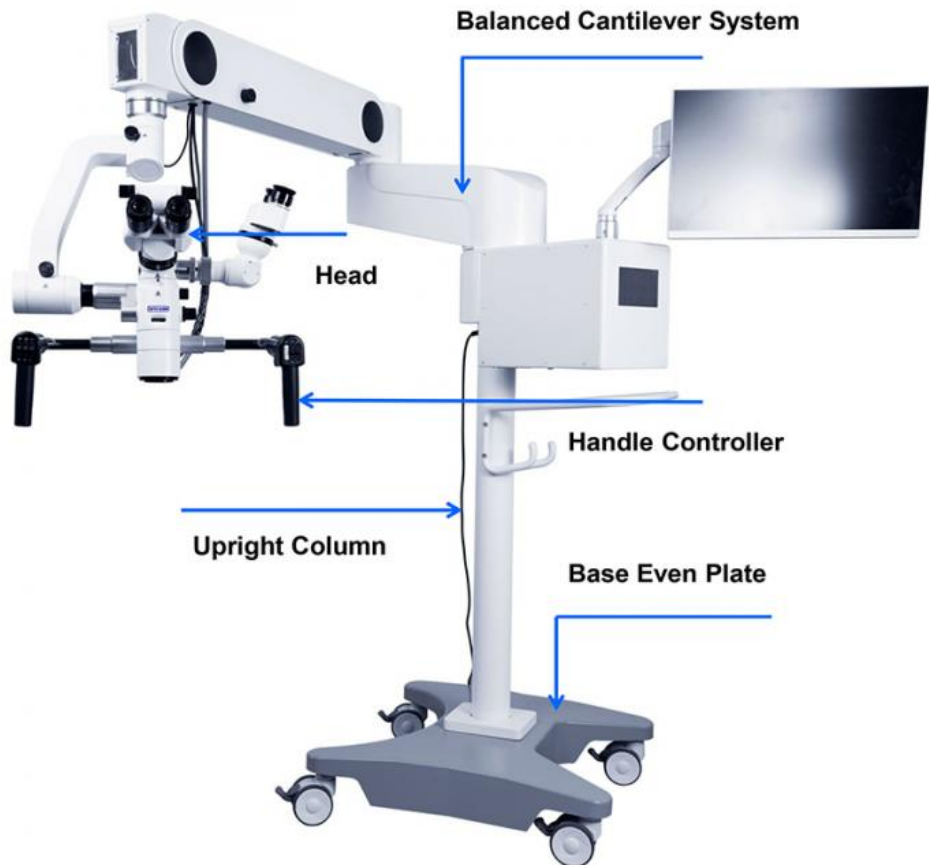
F-1501 Wanda Plaza, No.18 Shijingshan Road, Beijing 100043, China
Tel:+8610 88696020 E-mail:sale@cnoec.com

A41.1952 Operating Microscope

Operating Microscope, Dual Head, Motor Zoom, 1.8x~19x,
10 Function Handle, For Neurosurgery, Brain Surgery, ENT

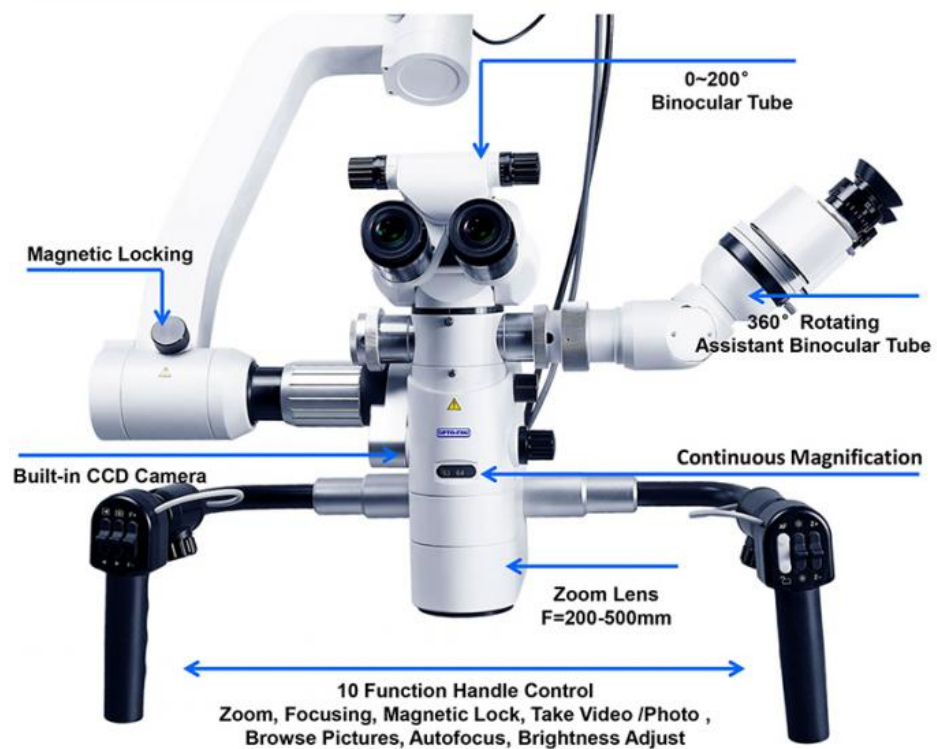


A41.1952 Details



A41.1952 Operating Microscope, is Best Choice for Neurosurgery, Brain Surgery Operation. It has one main head and one assistant head which can rotate 360° freely, using 2 set Xenon 300W Light for coaxial illumination up to 100000 lux, 1:6 Zoom Body, has total magnification 1.8x~19x, featured with Motorized Focusing, and 10 Functions control handle, it is widely used in hospital for Neurosurgery, Spinal, Vascular, ENT, Plastic, Reconstructive Surgery, Brain Surgery, Dental, and etc

A41.1952 Details



A41.1952 Features

- 2021 New Best Choice For Neurosurgery, Brain Surgery, Dental, ENT Operation Microscope
- Dual Head Binocular, Eyepiece 12.5x, Motorized Zoom 1.8x~19x, Objective F=200~500mm
- Main Binocular Variable Angle 0-200°, With Built-in CCD Camera & Software, Assistant Head 3x-16x
- 10 Function Handle, Zoom, Focusing, Magnetic Lock, Photo/Video, Review, Auto Focus, Brightness Adjust
- Built-in Dual Xenon 300W Light, 100000 Lux, Stand Max Extend Range 1250mm, With Magnetic Lock



Multilayer Coating Technology, The Light Transmittance Is Up To 98%

Through multilayer coating technology, we can reduce light reflection attenuation, increase light transmission and improve brightness. The multilayer coating technology we use can achieve optical energy passing rate of 98%.

A41.1952 Details



6 Sets Magnetic Locking System For Arm And Head , Controlled By Handle

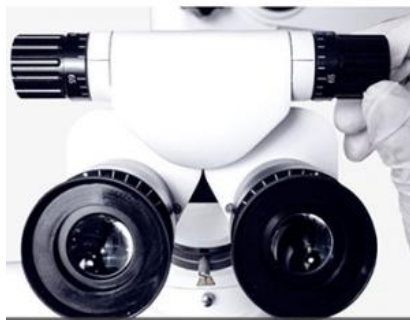


A41.1952 Details

200-500mm Zoom Objective Lens



A41.1952 Details



Pupil Distance Adjustable 55mm~75mm



Small Light Spot, Blue Filter And Yellow Filter



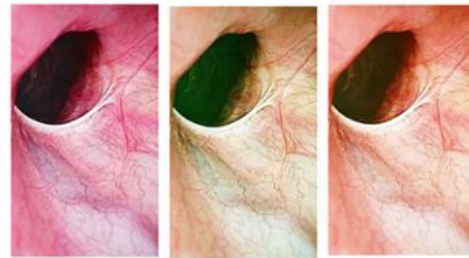
Continuous Magnifications Manually & Motorized Controlled By Handle



Dual Port Beam Splitter, One For Assistant Tube, Another For Digital Camera.

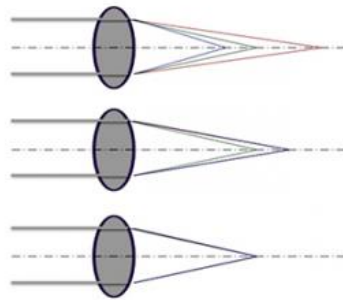


LED And Halogen, Can Use Together At The Same Time or Separately



Yellow Filter, Green Filter And Small Spot Included

A41.1952 Details

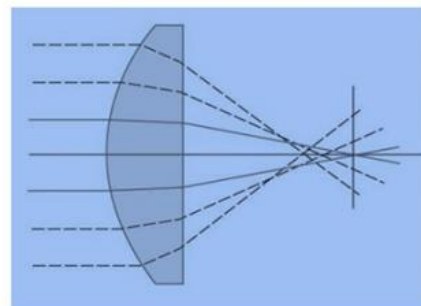
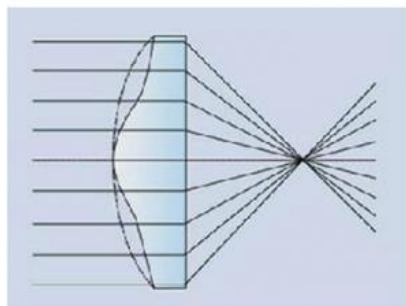


Complex Achromatic Objective Lens

Optical design of apochromatic correction can not only red green and blue three colors. Can correct the aberration of red, blue two color lights. Improve image resolution, contrast and depth of field

Aspheric Lighting Technology, Better Light Gathering Effect

The spherical illumination can not refract the light to the same surface, and cause the light to be more dispersed on the surface. The aspheric technology can increase the concentration effect and improve the brightness.



WF12.5X High Point Eyepiece

The unique design of the optical system, convenient for doctors with glasses.



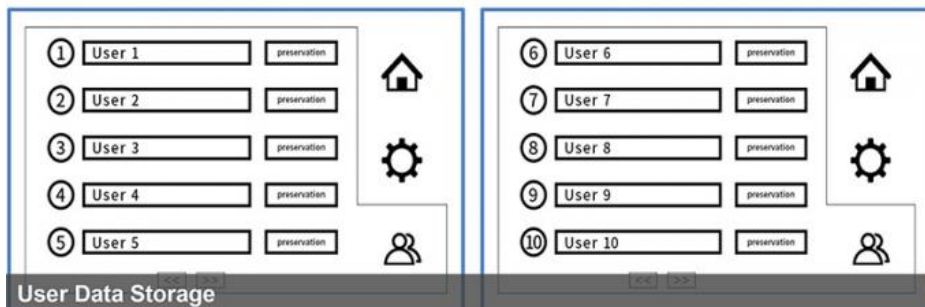
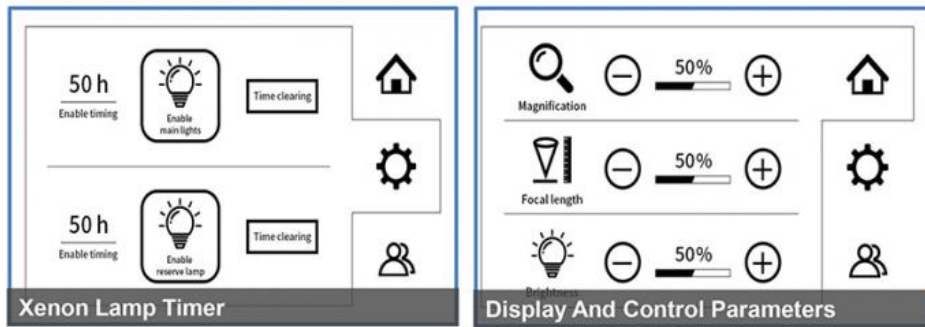
A41.1952 Details



A41.1952 Camera System

Configure the wireless mouse operation, without the computer, free access to high definition images. The product interface is rich, HDMI and USB are synchronously output, high speed SD cards are photographed or recorded video. At the same time, it has the same screen image contrast, HDR (wide dynamic), image freezing, image inversion, digital amplification and other functions. It is widely used in video conferencing, telemedicine, micrograph, video projection and other fields.

A41.1952 Dual Xenon Lamp



A41.1950, A41.1951, A41.1952 Surgical Operation Microscope

A41.1950 Operating Microscope, is Best Choice for Neurosurgery, Brain Surgery Operation. It has one main head and one assistant head which can rotate 360° freely, using fiber-optic cable for coaxial illumination up to 100000 lux, **1:6 Zoom Body**, has total magnification 3x~16x, objective F=300mm or 250mm, featured with **Motorized Focusing**, and **8 Functions** foot switch or control handle, it is widely used in hospital for Neurosurgery, Brain Surgery, Spinal, Vascular operation, it can also be used for Orthopedics, Hand, Chest, Burn And Plastic Surgery, or Dental, ENT, Andrology, Genitourinary, Animal Anatomy etc.

A41.1951 is the upgraded version, with built-in CCD camera & software, zoom objective F=200~450mm, 12 functions handle, and dual optical fiber LED + Halogen 100000 Lux light source.

A41.1952 is the highest model in this series, built-in 2 sets Xenon 300W Light, magnetic lock, and 10 functions handle, it can meet most of surgery operation work with best quality & control.

Features:

- Best Choice For Neurosurgery, Brain Surgery, Dental, ENT Operation Microscope
- Dual Head Binocular, Eyepiece 12.5x, Motorized Continuous 1:6 Zoom 3x~16x
- Main Binocular Variable Angle 30-90°, Assistant's Binocular 30° Can Swing 90° or 270°
- 8,10,12 Functions Foot or Handle Control For Zoom, Auto Focus, X-Y Moving, Photo/Video Taking, etc.
- Dual Optical Fiber Coaxial Halogen, LED or Xenon Light 100000 lux, Stand Max Extend Range 1250mm

	A41.1950	A41.1951	A41.1952
Main Usage	For Neurosurgery, Brain Surgery, Spinal, Vascular		
Eyepiece	WF12.5x		
Head	Dual Heads For Two People Operation, Assistant Binocular Can Swing 90° to 270° Against Main Head Motorized Swing Head In X Direction +/-45°, In Y Direction +90°, Can Stop At Any Angle Interpupillary Distance 55~75mm, Both Left & Right Eyetube Diopter Adjustable ±6D		
Main Head	Inclined 30°~90°	Inclined 0°~200°	Inclined 0°~200°

Magnification	3x~16x Continuous Zoom	1.8x~21x Continuous Zoom	1.8x~19x Continuous Zoom
View Field	Dia.74~12mm	Dia.13~110mm	Dia.12~113mm
Zoom Body	1:6 Motorized Continuous Zoom, Parallel Light System		
Assistant Head	Inclined 0°		
Magnification	3x~16x Continuous Zoom	3x~16x Continuous Zoom	3x~16x Continuous Zoom
View Field	Dia.74~12mm	Dia.74~12mm	Dia.94~13mm
Main Objective	F=300mm	F=200~450mm	F=200~500mm
Assistant Obj.	F=180mm		
Focus	Motorized Focus, +/-25mm	Motorized Focus 200~450mm	Motorized Focus 200~500mm
Control Switch	8 Functions Handle or Foot <ul style="list-style-type: none"> •X/Y Moving •Z Focusing •Zoom 	12 Functions Handle <ul style="list-style-type: none"> •X/Y Moving •Z Focusing •Zoom •Take Photo/Video •Review Photo/Video •Auto Focus •Brightness Adjust 	10 Functions Handle <ul style="list-style-type: none"> •Z Focusing •Zoom •Magnetic Lock •Take Photo/Video •Review Photo/Video •Auto Focus •Brightness Adjust
Filter	Yellow Filter, Green Filter, Small Spot		
Camera	Built-in Digital Camera, With Software, Auto Focus Function		
Stand	Four Wheels Moving Stand --Max Extended Length 1200mm --Max Rotatable Swing Angle of Arm 0~300° --Height From Objective to Floor 800~1250mm		Four Wheels Moving Stand --Max Extended Length 1715mm --Max Rotatable Swing Angle of Arm 0~300° --Height From Objective to Floor 690~1452mm
Lock	Mechanical Lock		Electro Magnetic Lock
Illumination	Dual Optical Fiber Coaxial 2 Halogen Cold Light, Light Spot Dia.50mm, Intensity 100000 Lux.	Dual Optical Fiber Coaxial LED + Halogen Cold Light, Light Spot Dia.50mm, Intensity 100000 Lux.	Dual Optical Fiber Coaxial Built-in 2 Sets Xenon 300W, Light Spot Dia.50mm, Intensity 100000 Lux.
Camera & LCD	None	Built-in Camera & Software	Built-in Camera & Software, LCD Monitor
Packing	4 Cartons Total G.W 165Kg Volume 0.45CBM Head:595×460×230(mm)/14KG Body:890×650×265(mm)/41KG Control:1025×260×300(mm)/32KG Stand:890×865×200(mm)/78KG		4 Cartons Total G.W 215Kg Volume 0.45CBM Head:595×460×230(mm)/14KG Body:890×650×265(mm)/41KG Control:1025×260×300(mm)/32KG Stand:890×865×200(mm)/128KG

A41.19 Series Model & Selection Guide



Picture	Model	Magnification	Head & C-Mount	Standard Objective	Optional Objective	Optional	Light Source	Control	Package	Application
	A41.1921	6 Steps, 2.7x, 4.5x, 7.2x, 10.8x, 18x, 27x	One Head 0°-200°	F=250mm	F=175mm F=200mm F=300mm F=350mm F=400mm F=450mm F=180-300mm F=200-500mm	Assistant Head Beam Splitter SLR Adapter Phone Holder CCD Adapter	LED 60000 lux	Manual	3 Cartons, Total G.W 111Kg, Volume 0.381CBM	ENT Dental
	A41.1926	2.5x-21x	One Head 0°-200°	F=250mm	F=175mm F=200mm F=300mm F=350mm F=400mm F=450mm F=180-300mm F=200-500mm	Assistant Head Beam Splitter SLR Adapter Phone Holder CCD Adapter	LED 60000 lux	Manual	3 Cartons, Total G.W 111Kg, Volume 0.381CBM	ENT Dental
	A41.1931	3 Steps, 6x, 10x, 16x	Dual Head 90° 45°+45°	F=200mm	F=175mm F=250mm F=300mm F=350mm F=400mm F=450mm	Beam Splitter SLR Adapter Phone Holder CCD Adapter	Halogen 60000 lux	2 Function Foot Switch Z (Focus)	3 Cartons, Total G.W 104Kg, Volume 0.346CBM	Ophthalmology Fundus Surgery
	A41.1932	3 Steps, 6x, 10x, 16x	Dual Head 45°+45°	F=200mm	F=175mm F=250mm F=300mm F=350mm F=400mm F=450mm	Beam Splitter SLR Adapter Phone Holder CCD Adapter	Halogen 60000 lux	6 Function Foot Switch X/Y/Z	3 Cartons, Total G.W 104Kg, Volume 0.346CBM	Ophthalmology Fundus Surgery
	A41.1936	Motor Zoom 4.5x-27.3x	Dual Head 30°-90°+45°	F=200mm	F=175mm F=250mm F=300mm F=350mm F=400mm F=450mm	Beam Splitter SLR Adapter Phone Holder CCD Adapter	Halogen Dual Fiber 100000 lux	8 Function Foot Switch X/Y/Z/Zoom	4 Cartons, Total G.W 165Kg, Volume 0.45CBM	Ophthalmology Fundus Surgery
	A41.1941	3 Steps, 6x, 10x, 16x	Dual Head 45°+45°	F=200mm	F=175mm F=250mm F=300mm F=350mm F=400mm F=450mm	Beam Splitter SLR Adapter Phone Holder CCD Adapter	Halogen 60000 lux	2 Function Foot Switch Z (Focus)	3 Cartons, Total G.W 104Kg, Volume 0.346CBM	Orthopedics, Plastic Surgery, Hand Surgery, Thoracic Surgery
	A41.1942	3 Steps, 6x, 10x, 16x	Dual Head 45°+45°	F=200mm	F=175mm F=250mm F=300mm F=350mm F=400mm F=450mm	Beam Splitter SLR Adapter Phone Holder CCD Adapter	Halogen 60000 lux	6 Function Foot Switch X/Y/Z	3 Cartons, Total G.W 104Kg, Volume 0.346CBM	Orthopedics, Plastic Surgery, Hand Surgery, Thoracic Surgery
	A41.1946	Motor Zoom 4x-24x	Dual Head 30°-90°+45°	F=200mm	F=175mm F=250mm F=300mm F=350mm F=400mm F=450mm	Beam Splitter SLR Adapter Phone Holder CCD Adapter	Halogen Dual Fiber 100000 lux	8 Function Foot Switch X/Y/Z/Zoom	4 Cartons, Total G.W 165Kg, Volume 0.45CBM	Orthopedics, Plastic Surgery, Hand Surgery, Thoracic Surgery
	A41.1960	Motor Zoom 3x-16x	Dual Head 30°-90°+0° Beam Splitter	F=300mm Or F=250mm	F=175mm F=200mm F=250mm F=300mm F=350mm F=400mm F=450mm	SLR Adapter Phone Holder CCD Adapter	Halogen Dual Fiber 100000 lux	8 Function Handle or Foot Switch X/Y/Z/Zoom	4 Cartons, Total G.W 169Kg, Volume 0.45CBM	Neurosurgery Brain Surgery Dental ENT
	A41.1951	1.8x-21x	Dual Head 0°-200°+0° Beam Splitter Built-in CCD Software	Built-in F=200-450mm	/	SLR Adapter Phone Holder	LED +Halogen Dual Fiber 100000 lux	12 Function Handle X/Y/Z/Zoom Auto Focus XY Pendulum Photo/Video Brightness	4 Cartons, Total G.W 169Kg, Volume 0.45CBM	Neurosurgery Brain Surgery Dental ENT

A41.19 Series Optional Accessories

OPTO-EDU

Optional Accessories		Optional For	Cata. No
Objective		F=175mm	A52.1941-175
		F=200mm	A52.1941-200
		F=250mm	A52.1941-250
		F=300mm	A52.1941-300
		F=350mm	A52.1941-350
		F=400mm	A52.1941-400
		F=450mm	A52.1941-450
Zoom Objective		F=180-300mm	A41.192x Series A52.1941-180300
		F=200-500mm	A41.192x Series A52.1941-200500
Head		Assistant Binocular Head	A41.192x Series A53.1941
Beam Splitter		Wedge-shaped Splitter, 1 Port	A41.192x Series A55.1941
		Beam Splitter, 2 Ports	A41.193x Series A41.194x Series A55.1942
Adapter		SLR Digital Camera Adapter, For Canon or Nikon (Need Confirm Which Brand When Order)	A41.192x Series A41.193x Series A41.194x Series A41.195x Series All Models A55.1943
		Mobile Phone Adapter & Holder	A41.192x Series A41.193x Series A41.194x Series A41.195x Series All Models A55.1944
		Digital CCD Camera Adapter	A41.192x Series A41.193x Series A41.194x Series A41.195x Series All Models A55.1945
Digital Camera		38M, 1/2.3", Output HDMI+USB+TF Card, HDMI Resolution Photo 60M, Video 2K@30FPS, 1080p@60FPS, USB Resolution 2.0M, HDMI+USB Output At Same Time, USB Measuring Function, Input DC12V, C/CS Mount, Including HDMI Cable, USB Cable, Remote Controller, Adapter, Manual, 16G TF Card	A41.192x Series A41.193x Series A41.194x Series A41.195x Series All Models A59.4231
Light Source		Xeon Light Source, 250W	A41.193x Series A41.194x Series A41.195x Series A56.4844
BIOM System Kit		For Fundus Surgery, Splitter+Holder+130°+90° Lens, Mounting Kits For Zeiss, Leica, Topcon, Takagi, Corder	A41.193x Series A55.1931



Opto-Edu (Beijing) Co., Ltd.

☎ 0086 13911110627

✉ sale@optoedu.com

🌐 cnoec.com

F-1501 Wanda Plaza, No. 18 Shijingshan Road, Beijing 100043, China