



## Dc 5v Compound Microscope Parts Usb 3.0 Cooled Ccd Camera 380 - 650nm Spectral Range

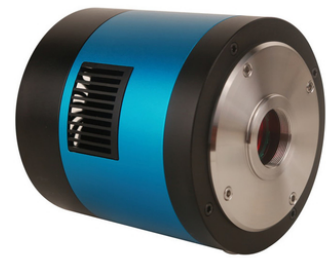
Our Product Introduction

for more products please visit us on [cnoec.com](http://cnoec.com)

### Basic Information

- Place of Origin: China
- Brand Name: CNOEC, OPTO-EDU
- Certification: CE, Rohs
- Model Number: A59.2226
- Minimum Order Quantity: 1 pc
- Price: FOB \$1~1000, Depend on Order Quantity
- Packaging Details: Carton Packing, For Export Transportation
- Delivery Time: 5~20 Days
- Payment Terms: T/T, West Union, Paypal
- Supply Ability: 5000 pcs/ Month

OPTO-EDU



### Product Specification

- Theory: Digital Camera
- Spectral Range: 380-650nm (with IR-cut Filter)
- Imaging Sensor: Omnivision OV5640 CMOS(Colorful)
- White Balance: ROI White Balance/ Manual Temp Tint Adjustment
- Power Supply: DC 5V Over PC USB Port
- Operation Software: Microsoft®Windows®XP / 7 / 8 / 8.1/10(32 & 64 Bit)
- Highlight: **microscope accessory, compound microscope parts**



A59.2226 Cooled CCD Camera, USB3.0

### More Images



A59.2226 Cooled CCD Camera, USB3.0



A59.2226 Cooled CCD Camera, USB3.0

OPTO-EDU



### A59.2226 USB3.0 CCD Cooled Digital Camera, Fluorescent Image

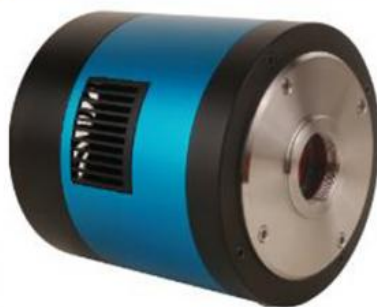
A59.2226 is an Microscope Temperature Regulated USB3.0 CCD camera and it adopts Sony Exview HAD CCD sensor as the image-picking device. Sony Exview HAD CCD is a CCD that drastically improves light efficiency by including near infrared light region as a basic structure of HAD (Hole-Accumulation-Diode) sensor.

A59.2226 comes with advanced video & image processing application Top View; Providing Windows/Linux/macOS/Android multiple platform SDK(Native C/C++, C#/VB.NET, Python, Java, DirectShow, Twain, etc);

A59.2226 can be widely used in low light environment and microscope fluorescence image capture and analysis.



## A59.2226 Features & Sample Pictures



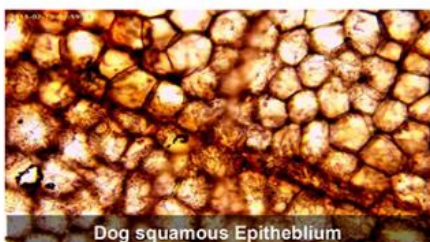
- USB3.0 Digital Camera With ExView HAD CCD  
II Sensors Resolution 1.4M~12M
- Two-Stage TE-Cooling Electric Fan, Sensor Chip Cooling  
-42°C Below Ambient Temperature
- Special Design For Fluorescent & DIC Image View Under  
Low Light, Up To 1 Hour Exposure
- Ultra-Fine TM Color Engine With Perfect Color  
Reproduction Capability
- With Advanced Video & Image Processing Software  
Image View, Support SDK For Win/Linux/Mac/Android



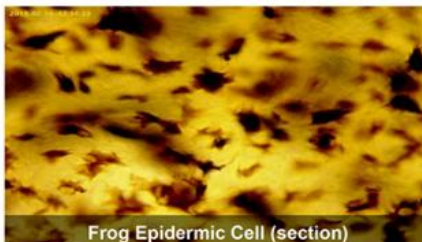
Dicot leaf helianthus leaf c.s.



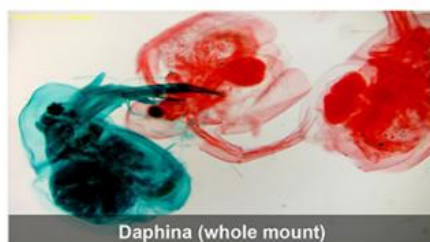
Leaf of pine needle



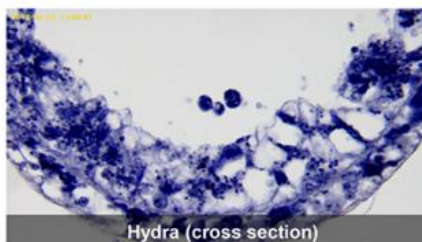
Dog squamous Epithelium



Frog Epidermic Cell (section)

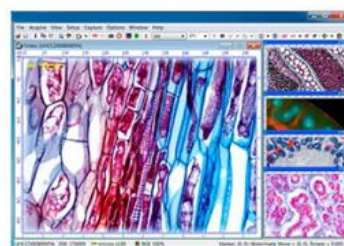
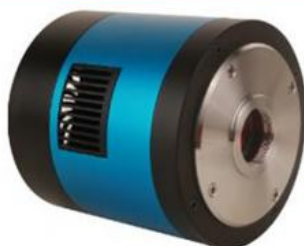


Daphnia (whole mount)



Hydra (cross section)

## A59.2226 Specification



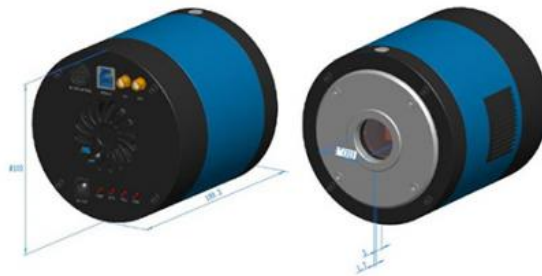
Cata. No.	Sensor & Size(mm)	Pixel(μm)	G Sensitivity Dark Signal	FPS/Resolution	Binning	Exposure
12MPA	12.0M/ICX834AQQ(C)	3.10x3.10	420mv with 1/30s	3.6@24248x2836	1x1	0.06ms~3600s
	1"(13.15x8.77)		15.2mv with 1/30s	3.6@2124x1418	2x2	
12MMA	12.0M/ICX834ALG(C)	3.10x3.10	420mv with 1/30s	3.6@24248x2836	1x1	0.06ms~3600s
	1"(13.15x8.77)		12mv with 1/30s(F8.0)	3.6@2124x1418	2x2	
9MPA	9.0M/ICX814AQQ(C)	3.69x3.69	580mv with 1/30s	4.4 @3388x2712	1x1	0.06ms~3600s
	1"(12.47x9.98)		12mv with 1/30s	4.4 @1694x1356	2x2	
9MMA	9.0M/ICX814ALG(C)	3.69x3.69	580mv with 1/30s	4.4 @3388x2712	1x1	0.06ms~3600s
	1"(12.47x9.98)		12mv with 1/30s(F8.0)	4.4 @1694x1356	2x2	
6MPA Hot	6.0M/ICX694AQQ(C)	4.54x4.54	880mv with 1/30s	7.5@2748x2200	1x1	0.06ms~3600s
	1"(12.48x9.99)		8mv with 1/30s	14@2748x1092		
6MMA	6.0M/ICX694ALG(M)	4.54x4.54	1000mv with 1/30s	7.5@2748x2200	1x1	0.06ms~3600s
	1"(12.48x9.998)		8mv with 1/30s	14@2748x1092		
	2.8M/ICX674AQQ(C)	4.54x4.54	800mv with 1/30s	15@1940x1460	1x1	0.05ms~3600s

<b>2.8MPA</b>	2/3"(8.81x6.63)		4mv with 1/30s	17@1610x1212		
				18@1932x1092		
<b>2.8MMA</b>	2.8M/ICX674ALG(M)	4.54x4.54	950mv with 1/30s	15@1940x1460	1x1	0.05ms~3600s
	2/3"(8.81x6.63)		4mv with 1/30s	17@1610x1212		
				18@1932x1092		
<b>1.4MPA</b>	1.4M/ICX285AQA(C)	6.45x6.45	1240mv with 1/30s	15@1360x1024	1x1	0.07ms~3600s
	2/3"(8.88x6.70)		10mv with 1/30s			
<b>1.4MMA</b>	1.4M/ICX285ALA(M)	6.45x6.45	1300mv with 1/30s	15@1360x1024	1x1	0.07ms~3600s
	2/3"(8.88x6.70)		11mv with 1/30s			
<b>1.4MPB</b>	1.4M/ICX825AQA(C)	6.45x6.45	2000mv with 1/30s	25@1360x1040	1x1	0.07ms~3600s
	2/3"(8.88x6.70)		4.8mv with 1/30s			
<b>1.4MMB</b>	1.4M/ICX825ALA(M)	6.45x6.45	2000mv with 1/30s	25@1360x1040	1x1	
	2/3"(8.88x6.70)		4.8mv with 1/30s			

**Remark:** C - Color, M-Monocolor, GS-GS Shutter

OTHER HARDWARE CONFIGURATION	
Spectral Range	380-650nm (with IR-filter), for Monochromatic Camera, AR Is Used
White Balance	ROI White Balance/ Manual Temp-Tint Adjustment
Color Rendering Tech.	Ultra Fine Color Engine
Capture/Control SDK	Windows/Linux/macOS/Android Multiple Platform SDK(Native C/C++, C#/VB.NET, Python, Java, DirectShow, Twain, etc)
Recording System	Still Picture and Movie
Cooling System*	Two-stage TE-cooling System -42 °C below Camera Body Temperature
OPERATING ENVIRONMENT	
Operating Temperature	-10 °C~ 50 °C
Storage Temperature	-20 °C~ 60 °C
Operating Humidity	30~80%RH
Storage Humidity	10~60%RH
Power Supply	DC 5V over PC USB Port External Power Adapter for Cooling System, DC12V,3A
SOFTWARE ENVIRONMENT	
Operating System	Support Microsoft Windows XP / Vista / 7 / 8 /10(32 & 64 bit) OS X (Mac OS X), Linux
PC Requirements	CPU: Equal to Intel Core2 2.8GHz or Higher
	Memory: 2GB or More
	USB port: USB2.0 High-speed Port
	Display: 17" or Larger CD-ROM
Dimension of A59.2226 Series Camera	

**A59.2226** series USB3.0 CCD Camera body, made from tough, alloy, ensures a heavy duty, workhorse solution. The camera is designed with a high quality IR-CUT to protect the camera sensor. This design ensures a rugged, robust solution with an increased lifespan when compared to other industrial camera solutions.



## A59.2226 Packing List



Packing List of A59.2226 Series Camera	
Standard Outfit	
<b>A</b>	Carton L:50cm W:30cm H:30cm (20pcs, 12~17Kg/ carton), not shown in the photo
<b>B</b>	Gift box L:28cm W:23cm H:15cm (2.8Kg/ box); Carton size:L:28.2cm W:25.2cm H:16.7cm

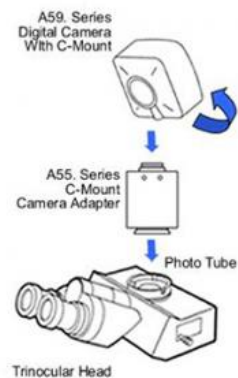
C	Digital camera			
D	Power adapter: input: AC 100~240V 50Hz/60Hz, output: DC 5V 4.5A			
E	High-speed USB3.0 A male to B male gold-plated connectors cable /2.0m			
F	CD (Driver & utilities software, Ø12cm)			
Optional Accessory				
G	Focus Adjustable Eyepiece Adapter	For Microscope	0.37x, C-Mount to Dia.23.2mm	A55.2202-A37
			0.50x, C-Mount to Dia.23.2mm	A55.2202-A50
			0.75x, C-Mount to Dia.23.2mm	A55.2202-A75
		For Telescope	0.37x, C-Mount to Dia.31.75mm	A55.2204-A37
			0.50x, C-Mount to Dia.31.75mm	A55.2204-A50
			0.75x, C-Mount to Dia.31.75mm	A55.2204-A75
H	Focus Fixed Eyepiece Adapter	For Microscope	0.37x, C-Mount to Dia.23.2mm	A55.2202-F37
			0.50x, C-Mount to Dia.23.2mm	A55.2202-F50
			0.75x, C-Mount to Dia.23.2mm	A55.2202-F75
		For Telescope	0.37x, C-Mount to Dia.31.75mm	A55.2204-F37
			0.50x, C-Mount to Dia.31.75mm	A55.2204-F50
			0.75x, C-Mount to Dia.31.75mm	A55.2204-F75
I	Adaptor Rings Dia.23.2mm to 30.0mm For 30.0mm Microscope Eyepiece Tube			A55.2203-30
J	Adaptor Rings Dia.23.2mm to 30.5mm For 30.5mm Microscope Eyepiece Tube			A55.2203-30.5
K	External Trigger Control Line			
L	Calibration Stage Micrometer	X=0.01mm/100Div.		
		X,Y=0.01mm/100Div		
		X=0.01mm/100Div., 0.10mm/100Div		

## Camera Connect To Microscope

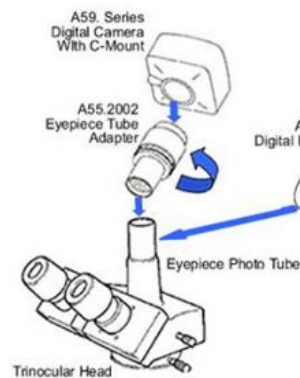
### OPTO-EDU

### How Camera Connect To Microscope

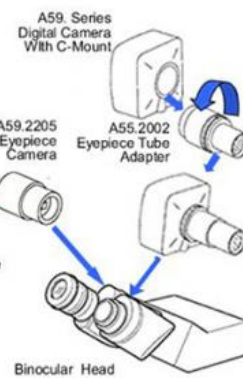
#### 1. To Trinocular Microscope On Straight Photo Tube



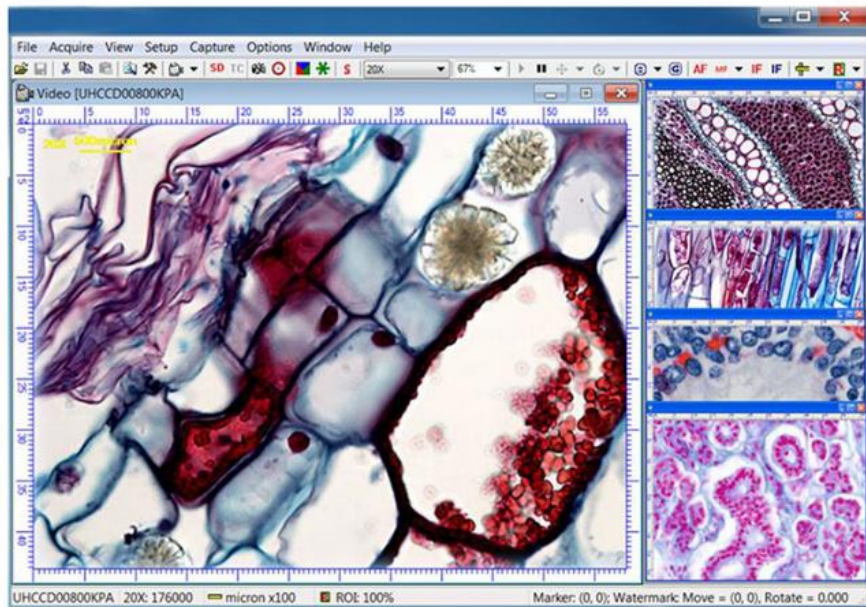
#### 2. To Trinocular Microscope On Eyepiece Photo Tube



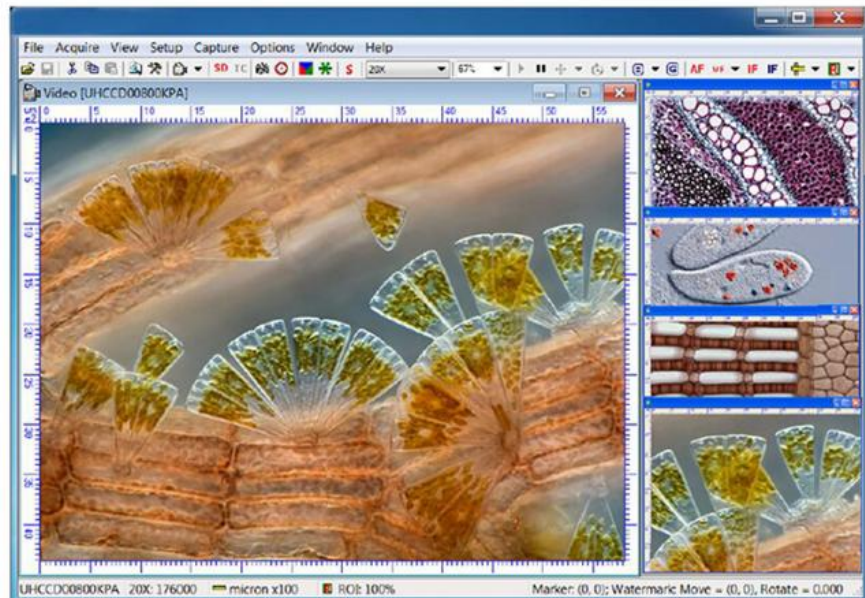
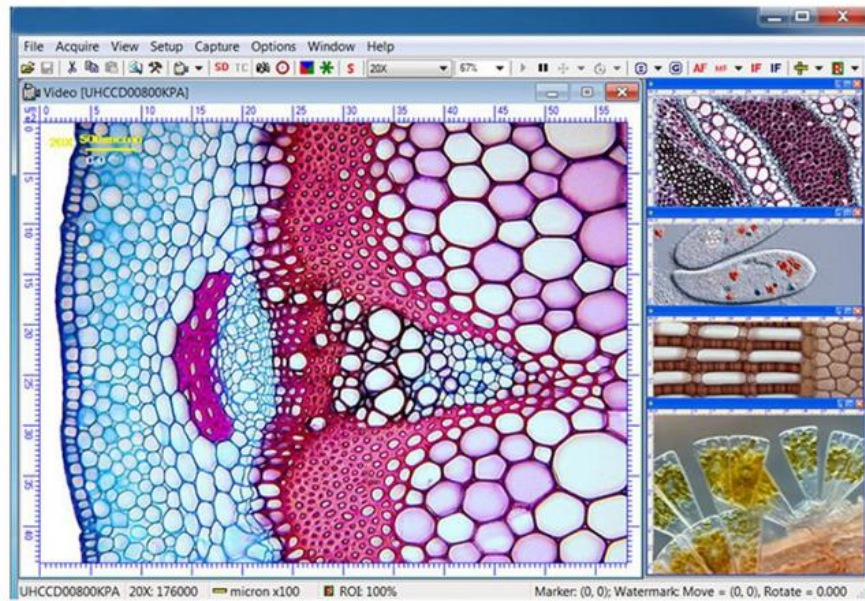
#### 3. To Binocular Microscope On Eyepiece Tube



The screenshot displays the ImageJ software interface. The top menu bar includes File, Edit, View, Browse, Setup, Capture, Image, Process, Layer, Measurements, Options, Window, and Help. The main window shows a fluorescence microscopy image of cells with green and red signals. A red box highlights the 'Language' option in the 'File' category of the Preferences dialog box. The 'Language' list includes English (selected), Catalan, French, German, Indonesian, Japanese, Korean, Polish, Russian, Simplified Chinese, Spanish, Thai, Traditional Chinese, and Turkish. The 'Misc' category is also visible in the left sidebar of the Preferences dialog.



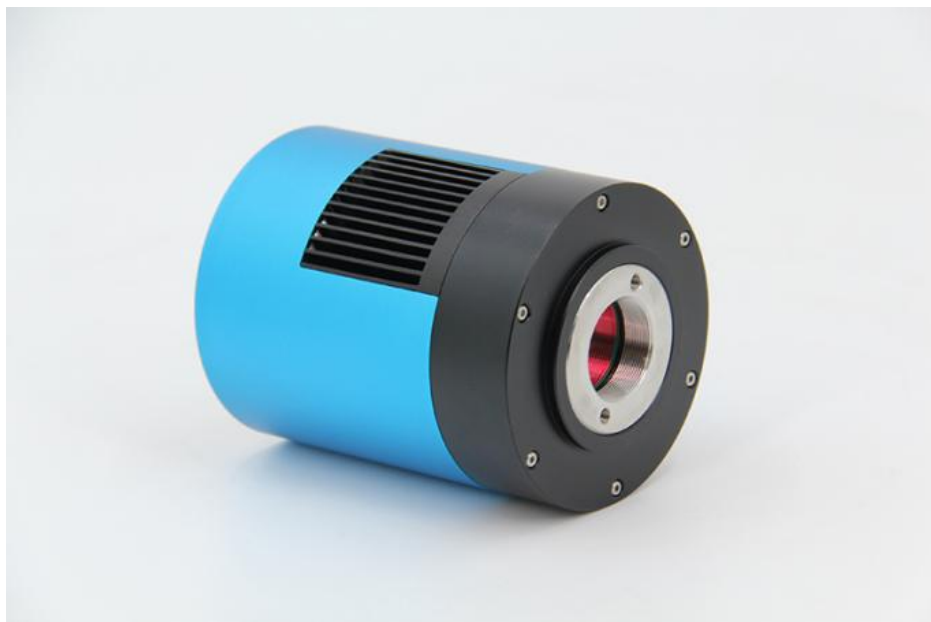
## Image View Software for Windows



More Pictures

OPTO-EDU







**Opto-Edu (Beijing) Co., Ltd.**



0086 13911110627



sale@optoedu.com



cnoec.com

F-1501 Wanda Plaza, No. 18 Shijingshan Road, Beijing 100043, China